

# KITCHEN FAUCET INSTALLATION

## BEFORE YOU BEGIN

We recommend consulting a professional if you are unfamiliar with installing plumbing fixtures. We accept no liability for any damage to the faucet, plumbing, sink, counter top, or for personal injury during installation.

Observe all local plumbing and building codes.

Unpack and inspect the faucet for shipping damage. If any damage is found, contact our Customer service.

---

## GETTING STARTED

- Ensure that you have gathered all the required materials that are needed for the installation.
- For these instructions, it is assumed that the old faucet has been completely removed and any necessary repairs or modifications to the water supply have been completed.

## TOOLS AND MATERIALS:



Plumbers  
Tape



Thread  
Sealant



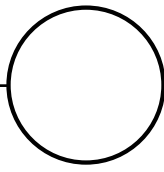
Small  
Bucket



Adjustable  
Wrench



Basin  
Wrench

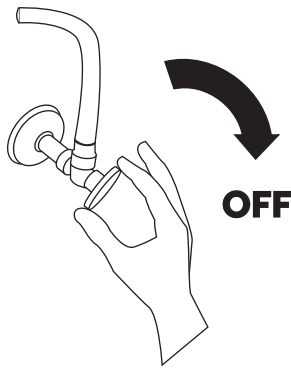


# KITCHEN FAUCET INSTALLATION

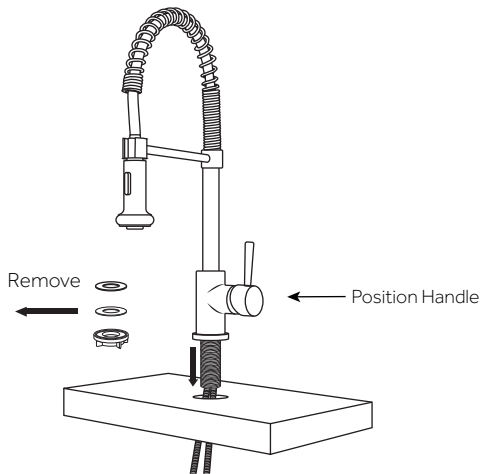
## INSTALLATION

1. Ensure that the water supply below your sink is completely shut off by turning the shutoff valves all the way to the right.

**Tip:** Place a small bucket below your workspace to catch any water that may drip during the installation process.

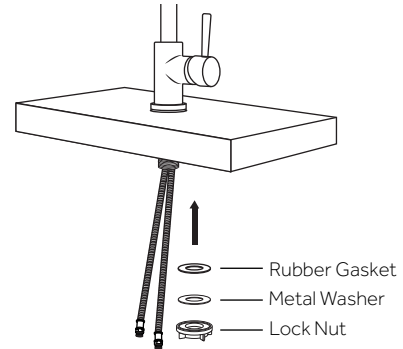


2. Remove the lock nut, metal washer, and rubber gasket from the faucet body. Insert the faucet body through the mounting hole in your counter top. Position the faucet so that the handle is on the right, as shown.

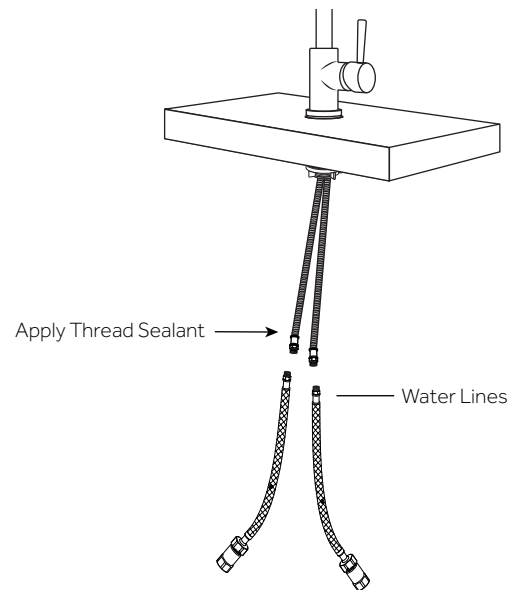


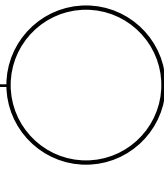
3. From beneath the sink, slide the rubber gasket back onto the faucet body followed by the metal washer. Thread the locknut back onto the faucet body, and tighten using a basin wrench.

**Note:** For thin mounting surfaces, use the provided plastic support. The support should slide on first, before the rubber gasket.



4. Attach the main water lines to the faucet's water lines. Apply thread sealant or plumber's tape to the threads before tightening. Ensure that you are connecting the hot and cold lines appropriately.





## KITCHEN FAUCET INSTALLATION

5. Once installation is complete, turn the main water supply back on from underneath your sink. Check for any leaks underneath.



6. Remove the hand sprayer by unthreading it from the sprayer hose. Turn the faucet on for approximately 60 seconds to remove any dust or loose sediment from the water lines, and to ensure that there are no leaks. Check to ensure that both hot and cold water are running properly. Reattach the sprayer and turn it on. Allow the sprayer to run for another 60 seconds, and check for any leaks.

