

## Important Safety Notes:

Read all the instructions included before installing the fixture. Retain this document for future reference. Turn off the power at the main fuse/breaker panel before beginning installation to avoid electrical shock. Do not install the fixture on an unfinished ceiling. Ensure a stable and secure surface before installing. Wear gloves while installing the fixture. Indoor installation only. Ensure the blades will be at least 30 in. from any obstructions. Blades must be at least 7 ft. above the floor. Do not bend or force blade arms into place.

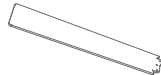
## What's in the Box?



1 Motor



1 Mounting Plate



3 Blades



1 LED Lamp Plate



1 Lampshade



1 AC Wall Control



1 Hardware Bag

## Required Tools:



Electrical  
Tape



14 Open  
Spanner



Flathead  
Screwdriver



Phillips  
Screwdriver



Pliers

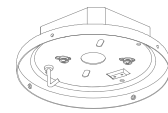
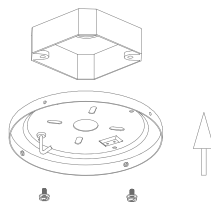
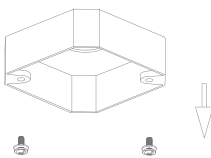


Ladder

## Installation Steps:

### 1: Secure the Mounting Plate.

Fig. 1

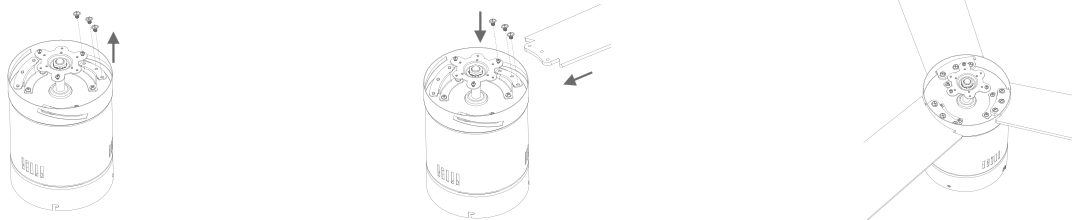


**Warning:** To reduce the risk of fire, electric shock, or personal injury, mount to an outlet box marked 'Acceptable for Fan Support' and can withstand at least 130lbs. Most junction boxes commonly used for supporting lighting fixtures are not acceptable for fan support and may need to be replaced. Consult a qualified electrician if in doubt.

1. Turn off power at the breaker.
2. Remove the mounting plate from the housing.
3. Unscrew the screws on the junction box.
4. Screw the mounting plate tightly to the junction box.
5. After the mounting plate is installed, make sure it can withstand a strong pull test to ensure the connection is secure.

## 2: Attach the Blades to the Motor.

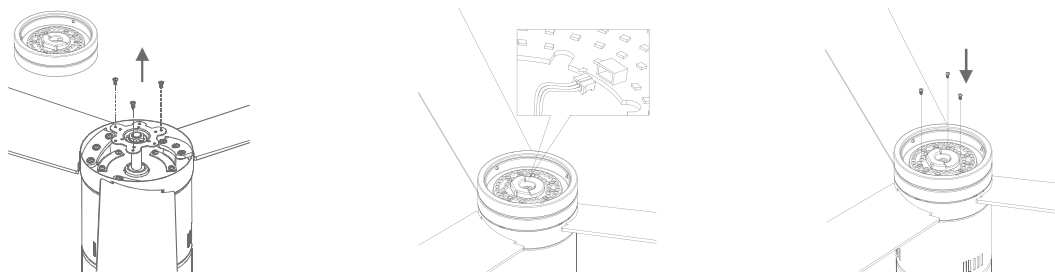
Fig. 2



1. Take the motor out of the box.
2. Remove the small screws from the blade plates.
3. Line up each blade with the blade arm and screw them together tightly using the removed screws, one blade at a time.

## 3: Attach the Lamp Plate.

Fig. 3

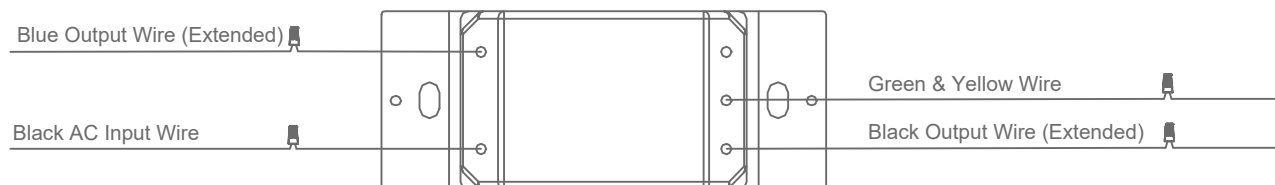


1. Remove the 3 screws from the bottom of the motor.
2. Plug the light kit wires into the LED module socket. It will only fit in one direction.
3. Line up the lamp plate with the motor base.
4. Screw the lamp plate into the motor base using the removed screws.

## 4: Install The Wall Switch.

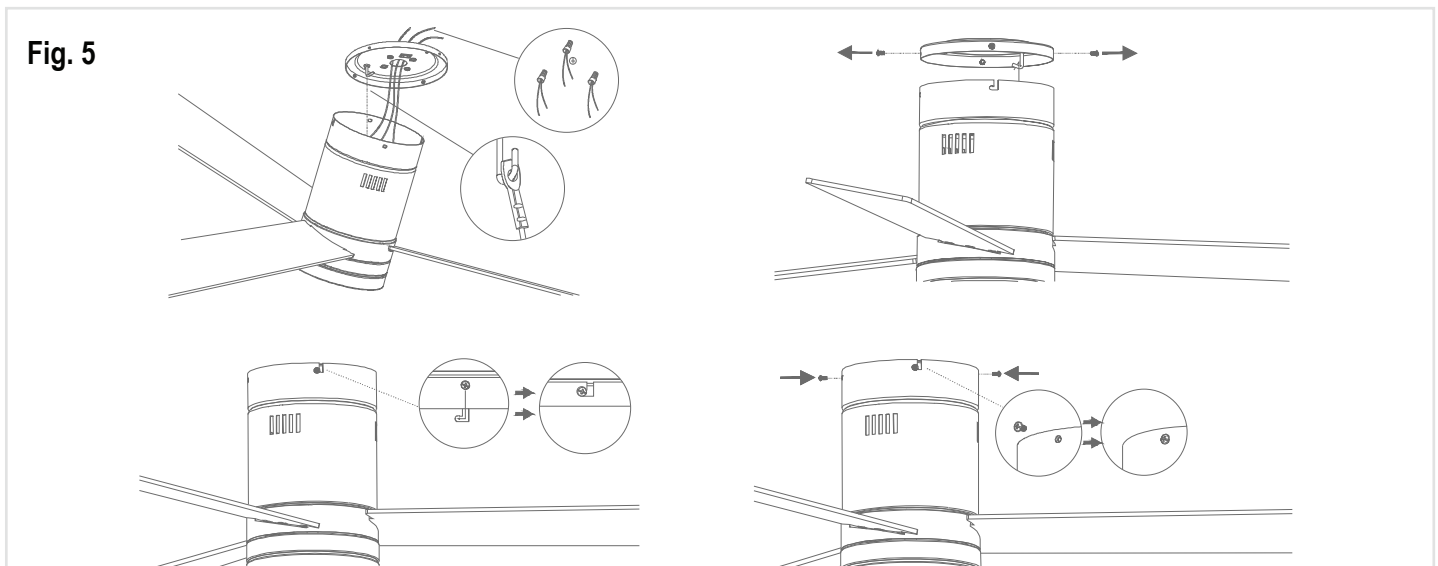
Fig. 4

Controller Wiring Schematic Diagram



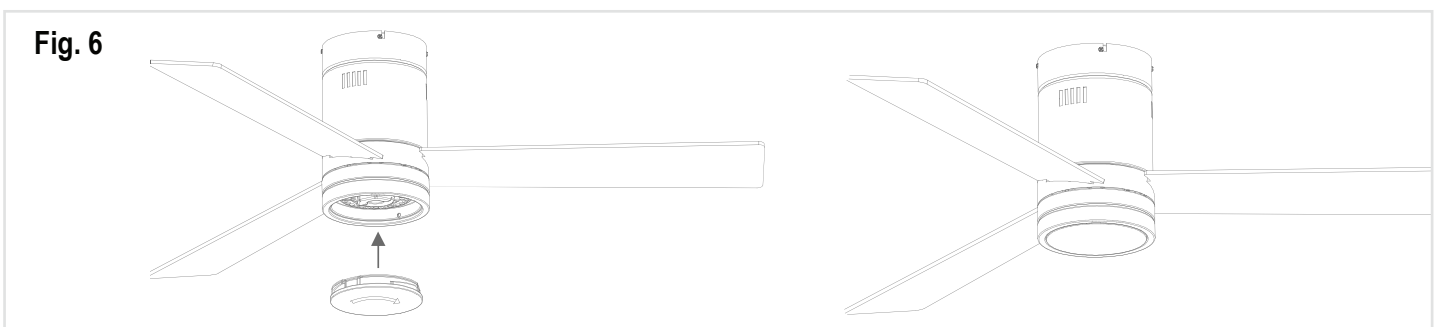
1. Turn the power off.
2. Remove the old wall plate and pull out the existing switch (if any).
3. Extend the Black and Blue wall control output wires to the ceiling junction box where the fan will be installed.
4. Connect the Black wall control AC input wire to the main power Live wire.
5. Connect the Yellow-Green wall control wire to the main power Ground wire.

## 5: Hang the Fully Assembled Fan.



1. Lift the fan and hook the safety cable onto the ceiling hook to hold the weight while you connect the fan wiring.
2. Match & connect each wire from the fixture to the correct ceiling wire as follows:
  - Black fan wire to extended Black wire (Motor)
  - Blue fan wire to extended Blue wire (Light)
  - White fan wire to main power Neutral wire.
3. Tuck all wires neatly into the outlet box.
4. Remove the side locking screws from the mounting plate.
5. Slide the fan's neck into the slot on the mounting plate.
6. Re-insert the locking screws and secure firmly using a screwdriver.

## 6: Connect the Lamp Shade.



1. Insert the acrylic lamp shade and twist clockwise until it locks into place.

## Troubleshooting

Problem	Step-by-Step Checks & Fixes
<p><b>Fan Won't Start (No Spin, No Light)</b></p>	<ol style="list-style-type: none"> <li>1. Check breaker/fuse — Is power on? Reset if tripped.</li> <li>2. Check wall switch — Is it turned ON? Try all speed buttons.</li> <li>3. Check voltage at ceiling — Use a multimeter. Should read 120V ±10% between black and white wires.</li> <li>4. Check wiring connections — All wire nuts tight? No loose strands? Re-twist and re-cap if needed.</li> <li>5. Check internal fan wiring — Open light kit. Are motor and light plugs fully seated?</li> </ol>
<p><b>Fan Makes Noise (Hum, Buzz, Click, Grind)</b></p>	<ol style="list-style-type: none"> <li>1. Run fan 24 hours — New fans are loud at first. Motor “breaks in” and quiets down.</li> <li>2. Tighten all screws — Check: mounting plate, blade-to-arm, arm-to-motor, light kit screws.</li> <li>3. Check blade clearance — Blades must be 30 inches from walls, furniture, curtains. Move obstructions.</li> <li>4. Avoid hollow surfaces — Do not mount on thin plywood, drop ceiling tiles, or plastic panels — they amplify sound. Use solid wood joist only.</li> <li>5. Listen at low speed — If noise is only at high speed, motor is fine — likely loose part.</li> </ol>
<p><b>Fan Wobbles (Shakes Side to Side)</b></p>	<ol style="list-style-type: none"> <li>1. Confirm secure mounting</li> <li>2. Mounting plate locked? → Pull down hard — must not move.</li> <li>3. Hanger ball in slot? → Check side locking screw (Fig 4) is fully tight.</li> <li>4. Blade screws tight? → Every screw from blade → arm → motor must be snug (hand-tight + ¼ turn with screwdriver).</li> </ol>