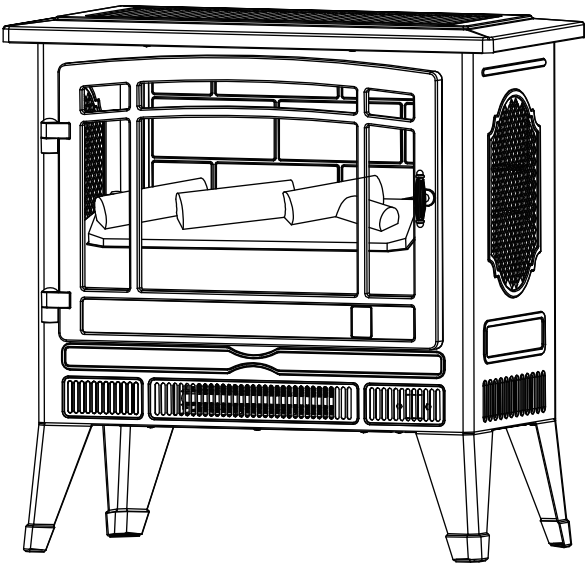


SMART ELECTRIC FIREPLACE CONNECTION GUIDE



KEEP THIS USER MANUAL FOR FUTURE REFERENCE.

Connect to AIR.ai App

Use the AIR.ai App to control your electric fireplace from your iPhone or Android device even when you are away from the home.

System Requirements

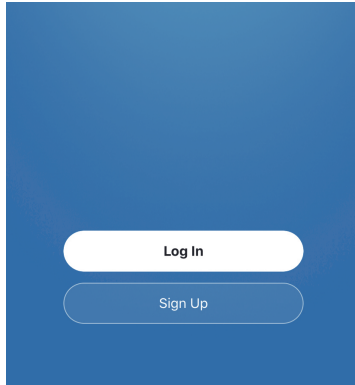
- Supported wireless routers must have an available 2.4 GHz operating frequency
- Standard: 802.11b/g/n bands
- Supported smartphone systems: Android 4.4 or later
iOS 9.3 or later

A. Scan the QR code below or search 'AIR.ai' on App Store or Google Play and download it.

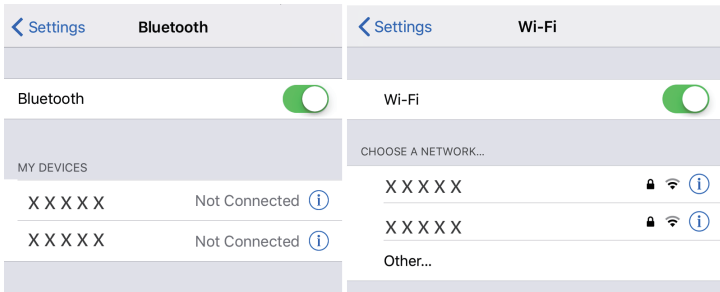


AIR.ai

B. Launch the AIR.ai App and log in to your account (sign up for your first use).



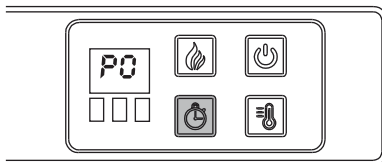
C. Turn on the Bluetooth of your phone and connect your phone to your Wi-Fi.



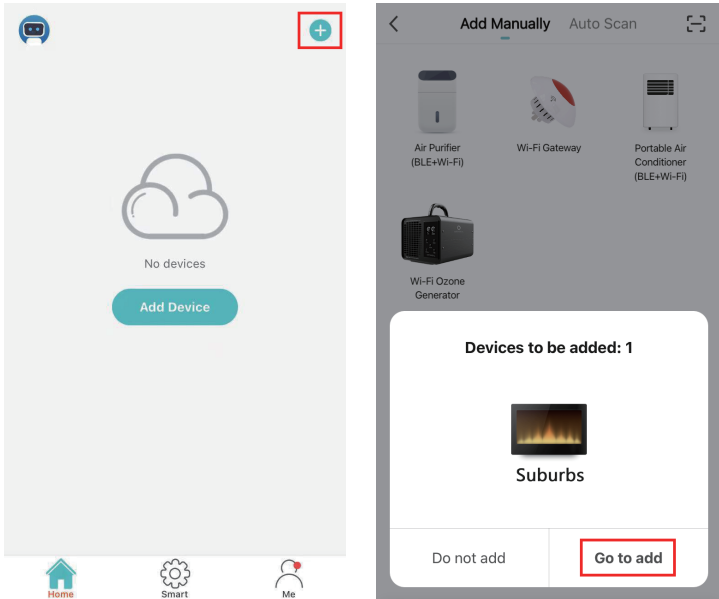
D.

1. When the fireplace is plugged in, it will automatically enter Wi-Fi pairing mode. During this mode, the screen will flash '**PO**', and pressing any buttons will exit the Wi-Fi pairing mode and switch the device to standby mode.

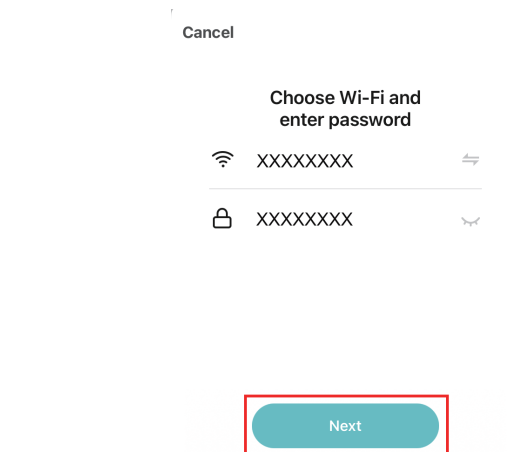
2. The WiFi mode will automatically turn off after 60 seconds of inactivity. To reactivate the Wi-Fi pairing mode, press and hold the Timer Button for 5 seconds. The screen will continuously flash '**PO**'.



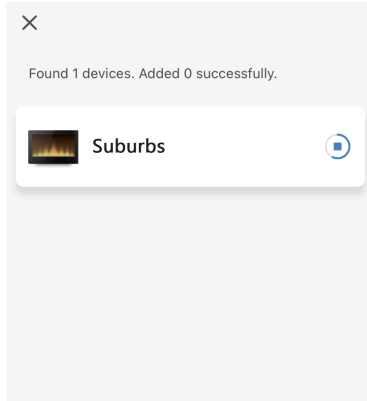
E. Back to the AIR.ai App. Press the '+' button in the top right corner. The App will search for the fireplace automatically. Press the 'Go to add' button to add your device.



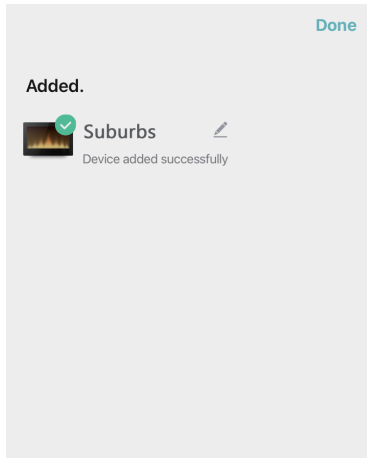
F. Choose your Wi-Fi (the one your phone is connected to) and enter the password. Press the 'Next' button to continue.



G. The AIR.ai App starts connecting to your device. It may take some time, please wait patiently.



H. Once you have set up the connection, you will find your fireplace in the device list. You can rename your device and get started now.



Note:

The fireplace WiFi cannot connect 2 mobile devices at the same time, but it can be shared via the App with others after connecting one device.

To change the control mobile device, please delete it on the App in the previous mobile device to set it back to default setting mode, then repeat above connect steps on the new mobile device.

