

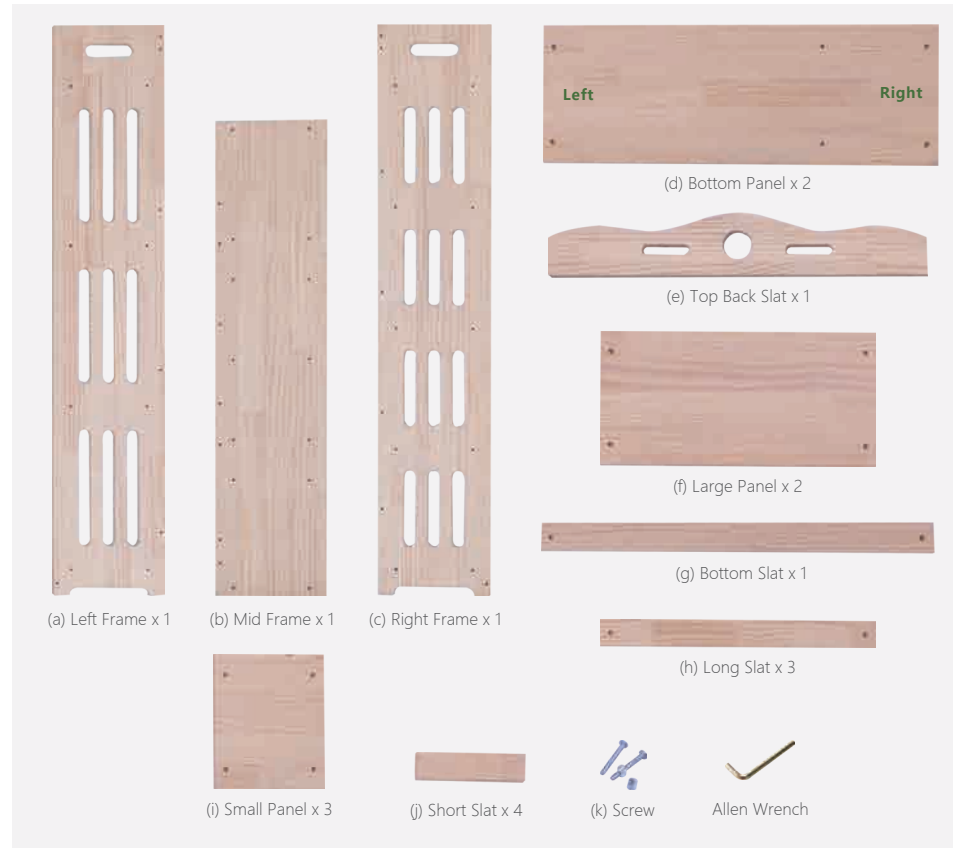
## USER GUIDE

# BOOKSHELF

Natural / Stylish / Unique



## HARDWARE



## ⚠️ ATTENTION

- 1 Please always read and follow the assembly, maintenance and operating instruction.
- 2 Do not discard any of the packaging until you have checked that you have all the parts and pack of fittings.
- 3 Keep children away during assembly. This item contains small parts which can be swallowed by children.
- 4 Wipe frames with water gently, do not use bleach, acid, or other solvents.
- 5 Check all hardware before assembly. Incorrect parts used may lead to damage.

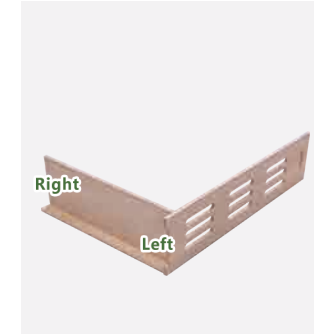


Scan the QR code to view the assembly video.

## ASSEMBLY INSTRUCTIONS



- 1 Position Frame (a) and Bottom Slat (g) as picture shown. Secure with Screws (k).



- 2 Position and secure Bottom Panel (d), on Frame (a) with Screws (k).



- 3 Secure Large Panels (f) with Screws (k).



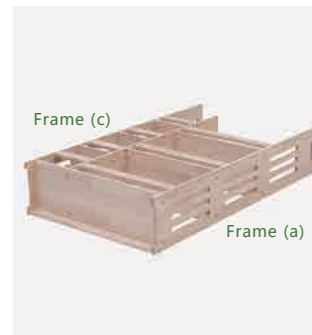
- 4 Secure Long Slats (h) with Screws (k).



- 5 Install Frame (b) with Screws (k).



- 6 Secure Short Slats (j) and Small Panels (i) with Screws (k).



- 7 Install Frame (c) with Screws (k).



- 8 Install Bottom Panel (d) with Screws (k).



- 9 Secure Top Back Slat (e) with Screw (k).