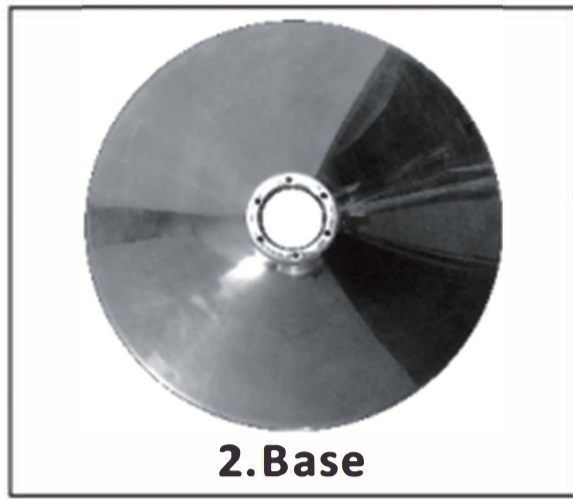


Installation Instructions

Some screws are pre-installed on the chair for easier installation.

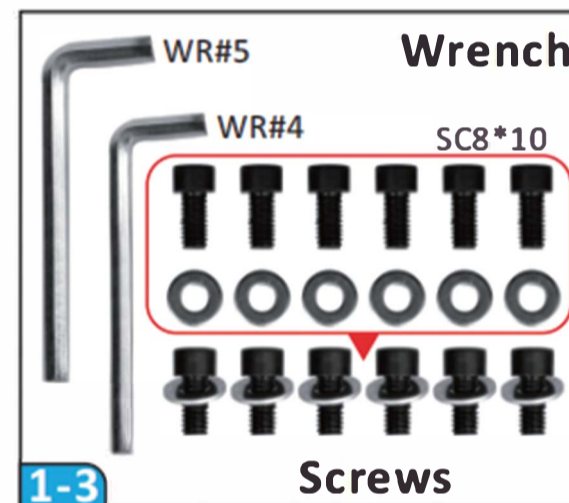
1. Parts Included



2. Installation Instruction

Please note, the top seat could be heavy, 2 people are recommended for the installation

Step 1. Attach the Pump to the Base



1. Parts you will need for this step.



2. Install the Base: 2-1. Turn the Pump upside down, insert the Base; 2-2. Secure the Base onto the Pump using the SC8*10 screws and the wrench (Make sure the screws are tightened to prevent chairs from rocking after installation.); 2-3. Turn the Pump to the upright position.

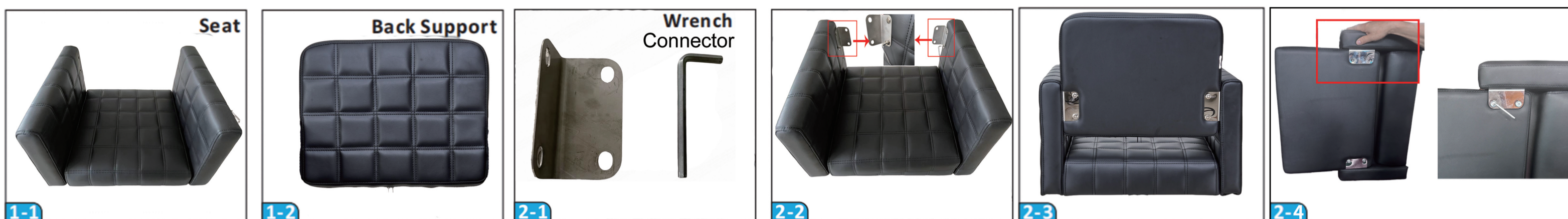
Step 2. Install the arm rest



1. Parts you will need for this step.

2. Remove the pre-installed screws on the bottom of the seat, align the screw holes of the armrest and seat, insert the screw and tighten the screw with the provided wrench to secure the armrest to the seat.

Step 3. Install the Seat and Back Support



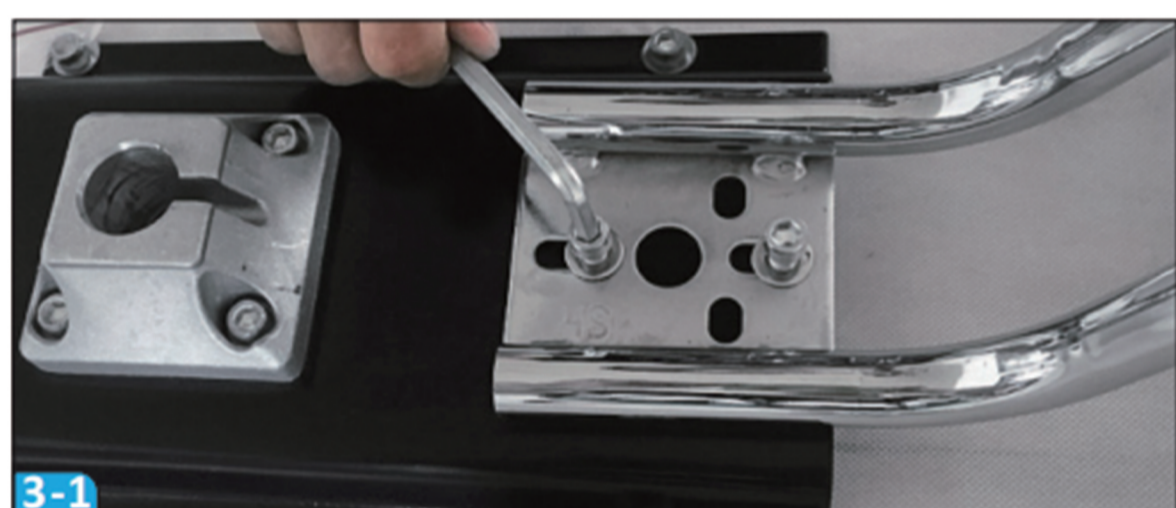
1. Remove the pre-installed screws on both sides of the armrest and use them to fasten the connector to the armrest (as shown in 2-2).
2. Remove the screws pre-installed on the backrest and use them to fasten the backrest to the connector (as shown in 2-3).
3. Turn the seat to another side, press down the armrest, adjust the backrest to align the screw holes of the backrest and the seat. insert the screws and tighten them(as shown in 2-4).

Step 4. Install the Footrest



1. Parts you will need for this step.

2. Remove the 2 screws + washers from the black panel at the back of the Seat (as shown in the picture), please keep them for the next step.



3. Align the footrest with the holes (where you have just unscrewed the screws in the last step), and secure them together using the wrench and the screws (that were removed from the last step).

Turn the seat to the upright position for next steps

Step 5. Install the top seat



1. Align the hole on the black panel at the bottom of the top seat with the Pump, and insert the top seat to the Pump to secure the top seat (nothing else needs to be done, the top seat will be secured when it is properly inserted onto the Pump).



Please sit on the seat for a while to stabilize the seat, so the chair will not wobbly. Now the installation has been completed.

Please do not hesitate to email us if there are any problems with the item.

