

Oil Filled Radiator



1000W | **REDA07S5**

1500W | **REDA07S7**

2000W | **REDA07S9**



**2 year
guarantee**

Instruction Manual



British engineering &
innovation since 1928

THANK YOU

FOR CHOOSING



We hope you love your product for many years!



Register your purchase

www.rediffusion.uk/pages/register-my-warranty

Scan QR code using mobile device

In line with our commitment to quality, your appliance is granted with a 1-year warranty cover. To optimize the benefits of this warranty, we suggest registering your product post-purchase, ensuring you get the most out of its features.

Please note: Warranty MUST be registered within 30 days of purchase. Any warranty registered after 30 days will be void.

CONTENTS

TECHNICAL SPECIFICATION	1
IMPORTANT SAFEGUARDS	2 & 3
HOW TO USE	4 & 5
CLEANING & CARE	6
DISPOSING OF THE PRODUCT	7
CUSTOMER SUPPORT	8
GUARANTEE & WARRANTY	9

TECHNICAL SPECIFICATION

	REDA07S5	REDA07S7	REDA07S9
Power:	1000W	1500W	2000W
Voltage/Frequency:	220-240V~, 50Hz	220-240V~, 50Hz	220-240V~, 50Hz
Dimensions (CM):	54.5 (H) x 24 (W) x 25.5 (L)	54.5 (H) x 24 (W) x 33 (L)	54.5 (H) x 24 (W) x 40.5 (L)
Net Weight:	4.6 kg	5.5 kg	6.7 kg

This user manual can also be downloaded from our website.

www.rediffusion.uk

Important Safeguards

When using electrical appliances, basic safety precautions should always be followed, including the following:

1. This appliance is not intended for use by persons (including children) with reduced physical, sensory or mental capabilities, or lack of experience and knowledge, unless they have been given supervision or instruction concerning use of the appliance by a person responsible for their safety.
2. Children should be supervised to ensure that they do not play with the appliance.
3. Connect the appliance to a single-phase AC power source with the voltage indicated on the rating plate.
4. In order to avoid overheating, do not cover the heater.
5. Never leave the heater unattended while it is in use. Always turn the product to the OFF position and unplug it from the electrical outlet when not in use.
7. The heater must not be located immediately below an electrical socket-outlet.
8. Arrange cord away from traffic areas and where it will not be tripped over. Do not run the cord under carpeting or cover it with throw rugs, runners, or similar items.
9. Do not operate the heater with a damaged cord or plug, or after the heater malfunctions, has been dropped, or is damaged in any manner.
10. If the supply cord is damaged, it must be replaced by the manufacturer, its service agent or a similarly qualified person to avoid a hazard.
11. Avoid the use of an extension cord as this may overheat and cause a risk of fire.
12. Use the heater in a well-ventilated area. Do not insert or allow objects to enter any ventilation or exhaust opening. To prevent a possible fire, do not block air intakes or exhaust openings in any manner. Do not use on soft surfaces, like a bed, where openings may become blocked. Use the heater on flat, dry surfaces only.
13. Do not place this heater near flammable materials, surfaces or substances, as there may be a risk of fire. Keep the above flammable materials, surfaces or substances at least 1m from the front of the product and keep them away from the sides and rear.
14. Do not use the heater in any areas where petrol, paint, or other flammable liquids are stored, such as garages or workshops, as hot, arcing, or sparking parts inside the heater could cause a fire.
15. Don't use this heater in the immediate surroundings of a bath, a shower or a swimming pool. Never locate the heater where it may fall into the bathtub or any other water container.
16. This heater is hot when in use. To avoid burns and personal injury, do not let bare skin touch hot surfaces. Use handles when moving the product.
17. Be sure that no other appliances are in use on the same electrical circuit as your product as an overload can occur.
18. This heater is filled with a precise quantity of special oil.
19. Repair requiring opening of the oil container are only to be made by the manufacturer or his service agent who should be contacted if there is an oil leakage.
20. Regulations concerning the disposal of oil when scrapping the appliance have to be followed.
21. The heater should not be used in a room, of which the floor area is less than 5 M².
22. The cord shouldn't be placed near the hot surface of the appliance.

Important Safeguards

Power Cord Safety Tips

1. If the supply cord is damaged, it must be replaced by the manufacturer, its service agent, or similarly qualified persons in order to avoid a hazard.
2. The appliance should be connected to an earthed mains socket.
3. Ensure your mains voltage corresponds to that stated on the appliance.
4. Never pull or yank on the cord or the appliance.
5. Fully uncoil the cable before plugging into the mains.
6. Always switch the clothes rack off on the unit and socket before unplugging from the mains. Unplug and fold away when not in use.
7. To disconnect the appliance, grasp the plug and remove it from the outlet.
8. Never wrap the cord tightly around the appliance as this could cause the wire to fray and break.
9. Do not operate the appliance if the power cord shows any damage.
10. Be aware that a trailing lead may present a trip hazard.
11. Ensure mains cable is not touching the heated surfaces.

**Ensure all packaging is kept out of the reach of small children
Plastic bags present a serious hazard to young children, babies and pets.**

How To Use

Parts Description:

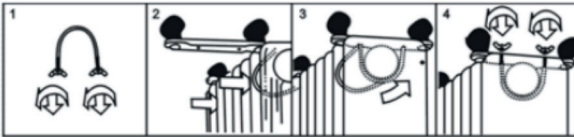
1. Carry Handle
2. Power switch
3. Thermostat knob
4. Radiator fins
5. Cord storage
6. Castor Wheels



Assembly

The heater is packaged with the feet unattached. You must attach them before operating the heater.

WARNING: Do not operate without feet attached. Do operate the heater only in upright position (feet on the bottom, controls on the top), any other position could create a hazardous situation.



1. Place the radiator body upside-down on a scratch-free location, and make sure it is stable and will not fall.
2. Screw off the wing nuts from the U-shaped bolt provided, attach the U-shaped bolt to the U-facing flange between the first and second fins (near the front cover).
3. To attach the castor mounting plate to the radiator body, you should insert the threaded ends of the U bolt in the holes on the castor mounting plate.
4. Screw the wing nuts back to the U bolt and fasten the wing nut properly.
5. Note: do not over-tighten, this may cause damage to the radiator flange.
6. Screw off the spherical nut from the castor, align the shaft to the hole of the castor mounting plate, insert in, and screw on the spherical nut.
7. Repeat 2, 3, 4, and 5 on the rear of the radiator for mounting the rear castors. **Note:** the rear castors must be mounted between the end two fins.

How To Use

How To Use

1. Before using the heater, make sure that it is on a flat and stable surface. Damage may occur if it is placed on an incline or decline.
2. Set all the controls to the OFF position and insert the plug firmly into a well-grounded socket outlet.
3. To operate the heater, rotate the thermostat knob clockwise to the MAX position. Then, switch on the heater as follows: Use switch I for low heat, switch II for medium heat, and turn both switches on for high heat.
4. When your room reaches the desired temperature, slowly rotate the thermostat knob counterclockwise until the pilot light goes out. The thermostat can now be left at this setting. As soon as the room temperature has dropped below the set temperature, the unit will switch it self on automatically until the set temperature has been reached again. In this way the room temperature remains constant with the most economical use of electricity.
5. If you want to change the room temperature setting, rotate the thermostat knob clockwise to raise the temperature or counterclockwise to lower it.
6. This heater includes an overheat protection system that shuts off the heater when parts of the heater are getting excessively hot.
7. To completely shut the heater off, turn all the controls to OFF, and remove the plug from the socket outlet.

NOTE: It is normal when the heaters are turned on for the first time or when they are turned on after having not been used for a long period of time the heaters may have noise inside, This will disappear when the heater has been on a short while.

Cleaning & Care

This appliance requires little maintenance and contains no user-serviceable parts. Do not try to fix it yourself. Refer it to qualified service personnel if servicing is needed.

Cleaning

1. Always remove the plug from the socket outlet and allow the radiator to cool down before clean the heater.
2. Wipe the radiator with a soft damp (not wet) cloth.
3. Do not immerse the appliance in water or any other liquid.
4. Do not use abrasive cleaning products on this appliance.
5. Do not allow the interior to get wet as this could create a hazard.

Storage

1. To store away the heater, wind the cable round the bobbin and store the heater in a clean dry place.
2. Never store the appliance while it is still plugged in.

Disposing Of The Product

Appliances bearing the symbol shown here may not be disposed of in domestic rubbish. You are required to dispose of old electrical and electronic appliances like this separately.

Please visit www.recycle-more.co.uk or www.recyclenow.co.uk for access to information about the recycling of electrical items.

Please visit www.weeeireland.ie for access to information about the recycling of electrical items purchased in Ireland.

The WEEE directive, introduced in August 2006, states that all electrical items must be recycled, rather than taken to landfill. Please arrange to take this appliance to your local Civic Amenity site for recycling, once it has reached the end of its life.

Correct Disposal Of This Product



This marking indicates that this product should not be disposed with other household wastes throughout the EU. To prevent possible harm to the environment or human health from uncontrolled waste disposal, recycle it responsibly to promote the sustainable reuse of material resources. To return your used device, please use the return and collection systems or contact the retailer where the product was purchased. They can take this product for environmental safe recycling.

Customer Support

If you have any questions or concerns about your new product, please contact our helpful Customer Support Team:

Please have your Model No. available. This can be found on the front cover of this manual and on the products rating label.

We're here to help!



01274 752624



customerservice@rediffusion.uk



www.rediffusion.uk

Happy with your new product?

We would love to hear your suggestions and feedback about your experience.



Guarantee & Warranty



Register your purchase

www.rediffusion.uk/pages/register-my-warranty

Scan QR code using mobile device



**2 year
guarantee**

To make a warranty claim, do not return this appliance to the store.

Please call 01274 752624 or email customerservice@rediffusion.uk. For faster service, locate the model number on the rating label on your appliance. Alternatively, please scan the QR code above to be directed to our warranty registration page.

This product is covered by a 1 year warranty, please read the guarantee and service carefully and keep for future use.

Please Note: To maintain the validity of the warranty, it is imperative to register it within the initial 30 days of purchase. Any registration made beyond this time frame will result in the warranty being deemed void.

This warranty is valid for products purchased and used in the UK and serves as the sole express warranty for the product, replacing any other warranty or condition. The product is guaranteed to be free from defects in material and workmanship for a specified period from the original purchase date. The warranty covers the repair or replacement of defective components, with the responsibility for return shipping costs falling on the customer. If the original product or component is unavailable, a replacement of equal or greater value will be provided.

Exclusions to this warranty include glass, filters, normal wear, improper use, accidents, alterations, abuse, or misuse. The warranty is applicable only to the original consumer purchaser or gift recipient, requiring proof of purchase for warranty claims. It becomes void if the product is used for purposes other than single-family household use or operated outside specified voltage and waveform requirements. The warranty disclaims all claims for special, incidental, and consequential damages, limiting liability to the purchase price. Every implied warranty, except where prohibited by law, is disclaimed, and any statutory warranty or condition is limited to the duration of this written warranty.



Capture, tag, and win with
#Rediffusionfamily



@Rediffusionuk

Tag us with **#Rediffusionfamily** on social media. We love seeing your amazing home transformations so much that we regularly feature our favourites and even host exclusive giveaways to show our online family some extra love!

Rediffusion

Belfry House, Roydsdale Way,
Bradford, BD4 6SU
01274 752624
www.rediffusion.uk

Illustrations may differ from actual product. We are consistently striving to improve our products, therefore all specifications contained herein are subject to change without notice.