

**PANK**

- So18** - 1xmax 23W E27 PL-EL
- SO23** - 1xmax 70W E27 alo. o/or  
1xmax 23W E27 PL-EL
- SO30** - 1xmax 105W E27 alo. o/or  
1xmax 23W E27 PL-EL

Design: Tiziano Maffione

**ISTRUZIONI PER LA MANUTENZIONE**

**PULIZIA:** pulire il prodotto con un panno morbido umido imbevuto di sapone o detersivi liquidi neutri, meglio se diluiti in acqua. Evitare assolutamente l'uso di alcol etilico o di detersivi contenenti, anche in piccole quantità, acetone, trielina e ammoniacca (solventi in generale).

**INSTRUCTION FOR MAINTENANCE**

**CLEANING:** clean the product with a damp soft cloth using soap or neutral liquid detergent, preferably diluted in water. The use of ethyl alcohol or detergents containing acetone, trichloroethylene or ammonia, even in minute quantities (solvents in general), is to be absolutely avoided



Morosini brand of Luci Italiane srl  
Via delle Industrie, 70, 30020 Marcon (VE)  
tel. +39 041 5952772 Fax +39 041 5956175  
www.morosinisrl.com  
info@morosinisrl.com

<p>6  6 Folly dust proof. Protetto contro la polvere.</p> <p>5  5 Dust proof. Protetto contro la polvere.</p> <p>4  4 Protected against solid matters (over 1 mm.). Protetto da corpi solidi superiori a 1 mm.</p> <p>3  3 Protected against solid matters (over 2.5 mm.). Protetto da corpi solidi superiori a 2.5 mm.</p> <p>2  2 Protected against solid matters (over 12 mm.). Protetto da corpi solidi superiori a 12 mm.</p> <p>1  1 Protected against solid matters (over 50 mm.). Protetto da corpi solidi superiori a 50 mm.</p> <p>0 Non Protection. 0 Non Protection.</p>	<p>6  6 Wave proof. Protetto contro le ondate.</p> <p>5  5 Water splash proof. Protetto contro getti d'acqua.</p> <p>4  4 Rain proof fixture. Protetto contro gli spruzzi.</p> <p>3  3 Splash proof fixture. Protetto contro la pioggia.</p> <p>2  2 Protected against water falling at 15° angle. Protetto da cadute d'acqua, inclinazione di 15°.</p> <p>1  1 Protected proof fixture. Protetto contro lo stillicidio.</p> <p>0 No Protection. 0 No Protection.</p>
--	---

Gradi di protezione IP - Protection degree (IP)

**IP** - Protection level - This establishes a classification system for electric appliances based on the protection level applied by their casing.

**SI** - Energy saving.

**CE** - All lamps are made to European standards EN 60598-1 and of materials approved by various safety institutes.

**FF** - Apparatus ready for mounting on inflammable surfaces.

**IP** - The first figure indicates the level of protection against penetration by solid bodies and dust. The second figure indicates the protection against penetration by liquids.

**SI** - Energy saving.

**CE** - All lamps are made to European standards EN 60598-1 and of materials approved by various safety institutes.

**FF** - Apparatus ready for mounting on inflammable surfaces.

**IP** - The first figure indicates the level of protection against penetration by solid bodies and dust. The second figure indicates the protection against penetration by liquids.

**Legenda**

During installation and every time any intervention is carried out on the lamp, make sure that the power supply is switched off. Only the type of light bulb indicated must be used and the specified maximum power must never be exceeded. If the wire of this appliance is damaged it must be replaced only by qualified personnel using an original spare part.

**WARNING**

Read the instructions for installation and use of the product very carefully, the safety of the apparatus is guaranteed only if these are adhered to. These instructions must also be kept, for the future use and maintenance of the apparatus.

**IMPORTANT**

Utilizzare esclusivamente il tipo di lampadina indicato e non superare mai la potenza massima stabilita. Se il cavo di questo apparecchio viene danneggiato deve essere sostituito esclusivamente da personale qualificato utilizzando il ricambio originale.

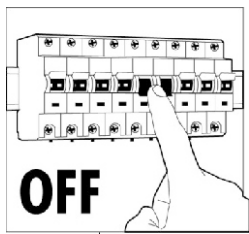
**AVVERTENZE**

Leggere attentamente le modalità di installazione e di impiego del prodotto, la sicurezza dell'apparecchio è garantita solo rispettando queste ultime. Si ritiene pertanto necessario conservare.

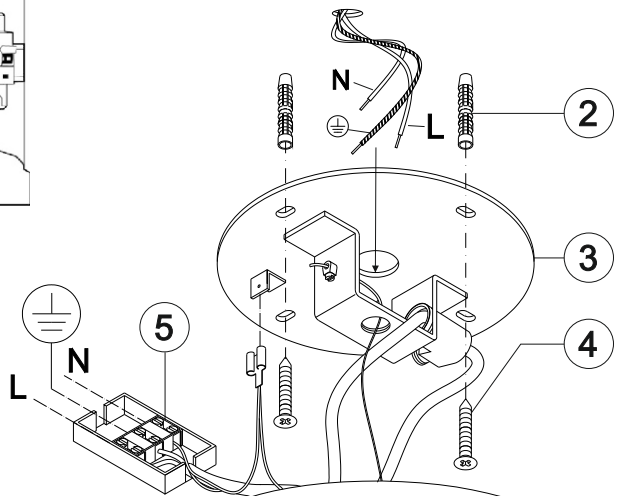
**ATTENZIONE**

Dal produttore all'acquirente - provided by the producer for the purchaser

**COMUNICAZIONI - INFORMATIONS**



1

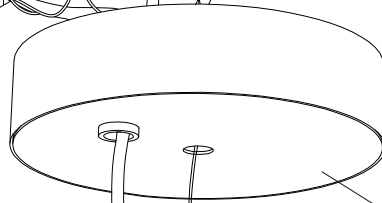


2

3

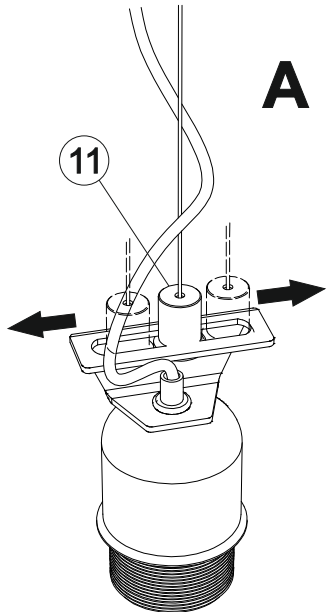
4

5



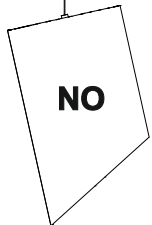
6

7



A

11

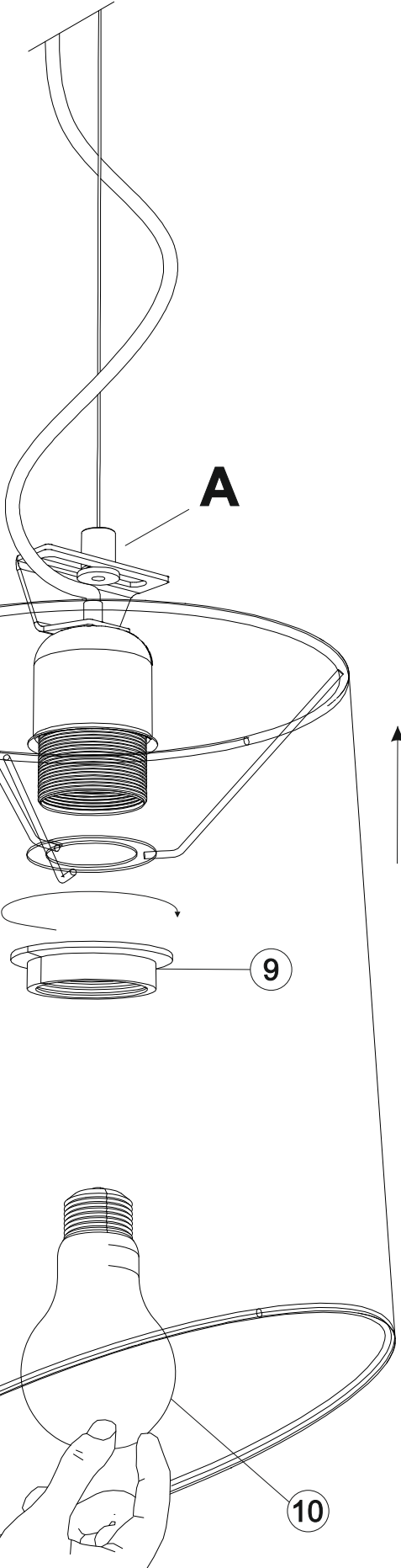


NO



OK

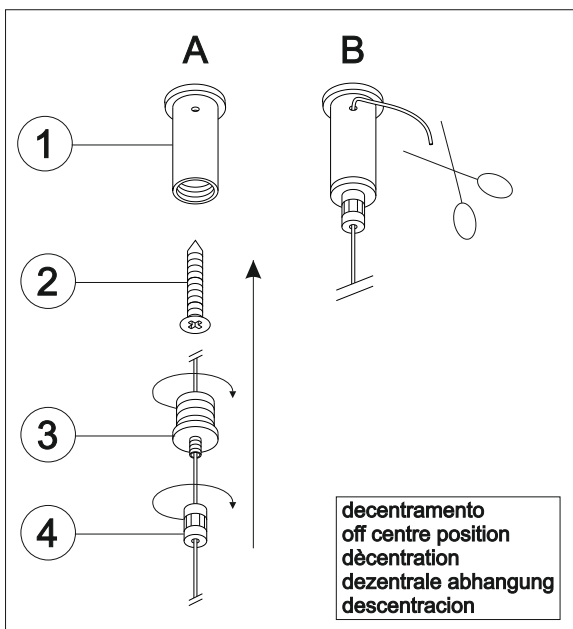
8



A

9

10



A

B

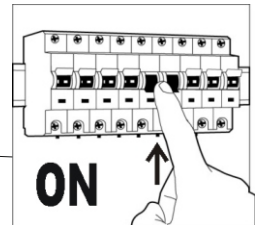
1

2

3

4

decentramento  
off centre position  
dècentration  
dezentrale abhangung  
descentracion



12

ON