



NGALA
TRADING

DELICIOUS LIGHT

The "Delicious Monster" pendant is inspired by nature and the Philodendron Monstera plants found throughout the coastal regions of southern Africa. Conceived and handmade in the Durban, South Africa studio of Xavier Clarisse, each piece is crafted from quality, locally sourced, vegetable tanned leather. A stainless steel skeleton transforms the flat leather fronds into a three-dimensional hanging sculpture

All hard-wired lighting is UL-listed for dry locations. Not suitable for outdoor use.

MATERIALS AND CONSTRUCTION

Full grain leather
Hand embossed leather
Hand-polished stainless steel

DIMENSIONS

38" Dia. x 19.25" H

CEILING CANOPY

4.7" Dia.
Black or White

CORD

1 x 9' L
Black or White Cotton Covered
SVT-B Flexible Electrical Wire
3 x AWG18: 3 conductors, 18 gauge

WEIGHT

Approximately 14 LBS

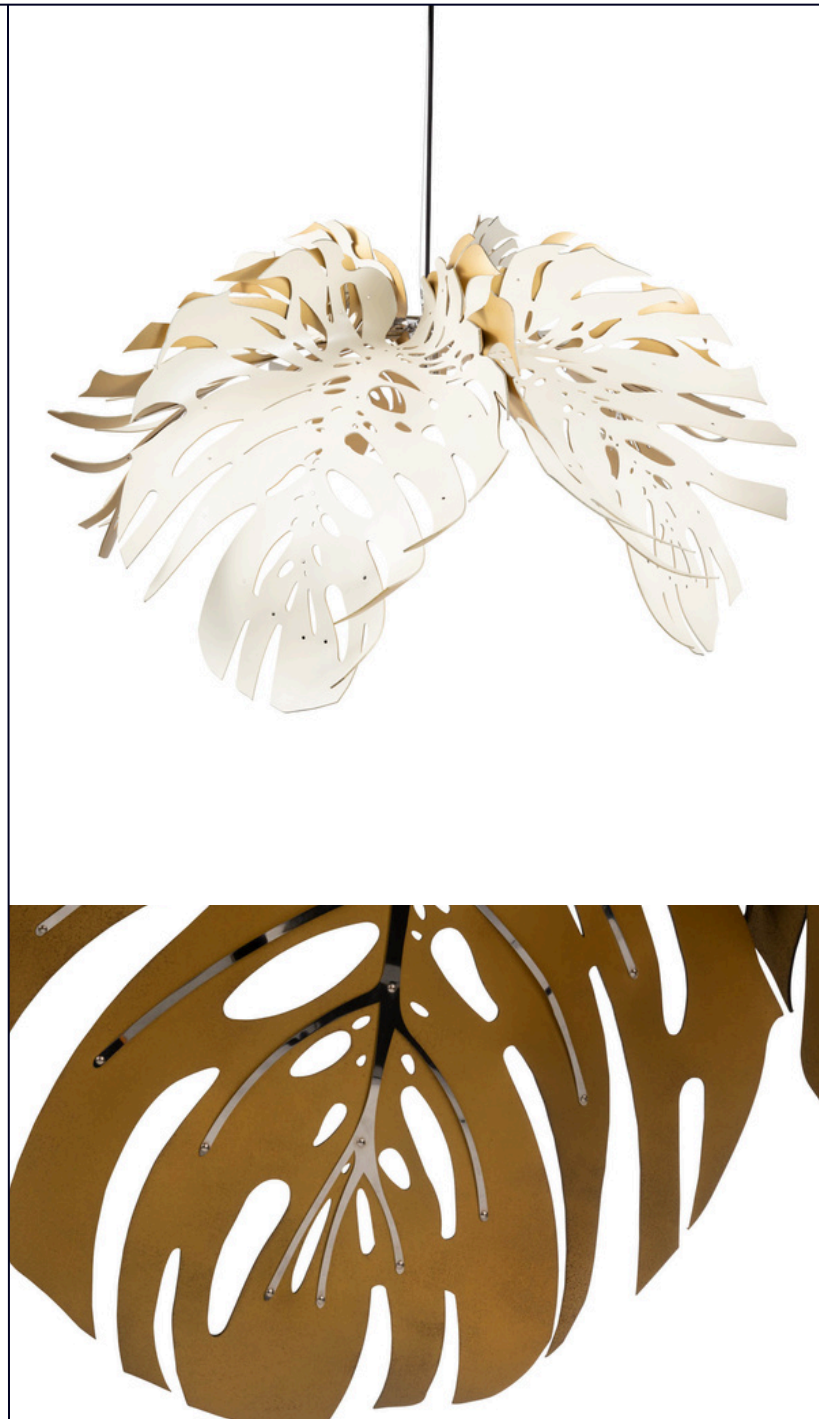
BULB SPECIFICATION (BULB NOT INCLUDED)

Type: LED only
Base: E26 (Standard Edison)
MAX Wattage per bulb: 7w LED
Number of bulbs required: 1
Recommended Bulb Specification: Feit 6.5W (60W)
G63 E26 Dimmable Spiral Filament Vintage Edison
LED Light Bulb - [click for link](#).

MANUFACTURER



NGALATRADING.COM





LEATHER COLORS



Black



Bone



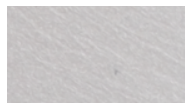
Grey



Pearl



Gold



Silver



Leaf

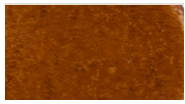


Teal

VINTAGE LEATHER COLORS



Pewter



Tan



Bronze

CANOPY / CORD COLORS



Black



White

Clarisse Design uses only full-grain, vegetable tanned leathers in the production of their handcrafted designs. This specific type of leather has been chosen for its physical attributes of thickness, durability and the ability to be shaped.

A full-grain piece of leather has the entire grain visible on one side. Except for the removal of the hair, the surface remains untouched. Natural imperfections like scars, blemishes, insect bites, branding and stretch marks may be present in this leather. These natural imperfections should not be regarded as defects and are a feature of this first-quality leather.

SPECS

38" DIA X 19.25" H

TOTAL HEIGHT: 127.25"

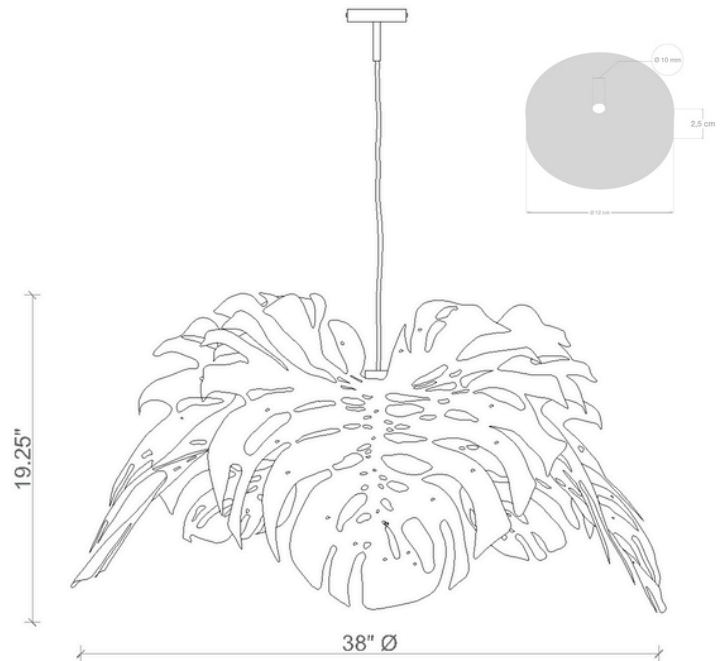
19.25" (FIXTURE) +

108" (CABLE)** +

1" (CEILING CANOPY)

** CABLE CAN BE SHORTENED DURING INSTALLATION **

MINIMUM HANG HEIGHT: 21.25"



SHIPPING AND DELIVERY

- Each pendant is flat-packed in a single box - ships UPS Ground
- Back-order & Made-to-Order items available for domestic shipping 12-14 weeks from receipt of deposit

INSTALLATION AND CARE

- Pendant requires 10-15 minutes of simple assembly
- Click [here](#) to view installation instructions
- Once assembled, the pendant is ready to hang hardwired into a standard 4"x4" junction box
- Leather is a natural product and is therefore susceptible to fading if exposed to direct sunlight or moisture