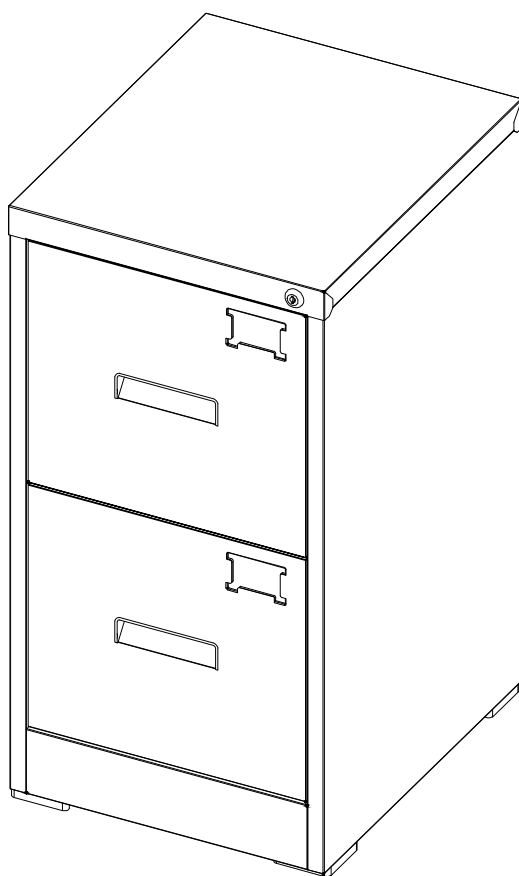


SKU:DSN026BN221A/DSN026WN222A
20005



THANK YOU FOR CHOOSING US !

Your new Metal Cabinet has arrived and it will make your life so much easier. That's why we put so much effort into designing it to perfectly fit your needs.

But first things first, we need to install it!.

When we say “we”, we mean we're going to guide you, step by step. We created this instructions manual so that you won't feel overwhelmed and get your new cabinet up and ready to use in no time! We also know that sometimes things just don't seem to fit, so don't hesitate to drop us a line at help@amrecianoffice.com if you have questions or need help!

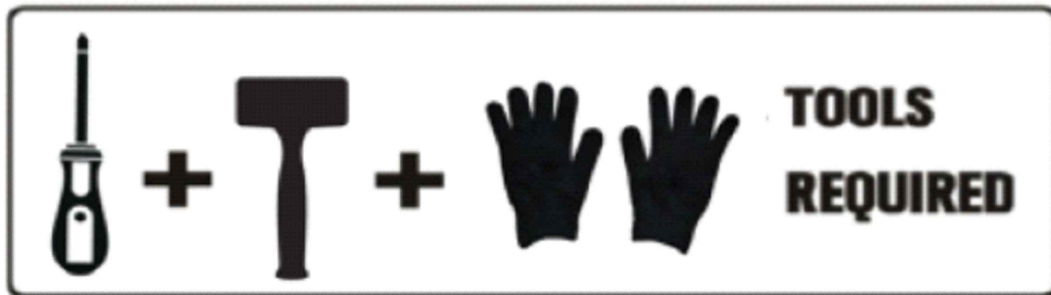
Anyways, this cabinet CANT WAIT TO BE OF SERVICE so let's assemble it!

MISSING A PART? DON'T WORRYWE GOT YOUR BACK!

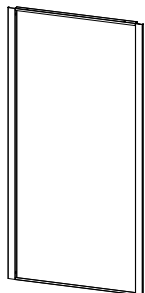
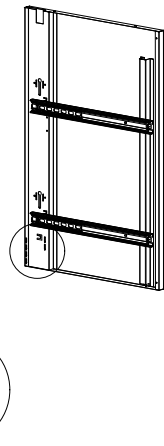
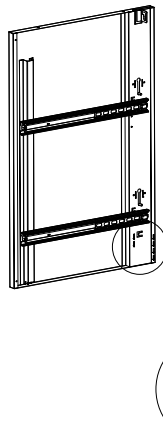

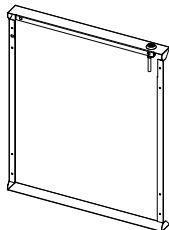

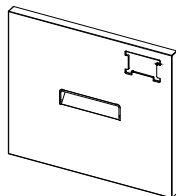
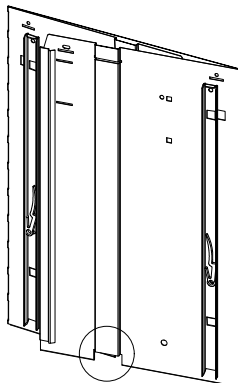

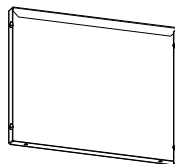
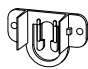



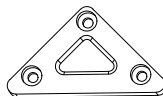

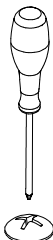
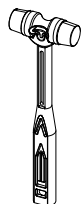

Compare the sketch on the next page with your package. Are all the pieces there? However, sometimes errors happen,so if anything is missing just send us an email and we will make sure to fix it!

Before you start, here are a few quick pointers:

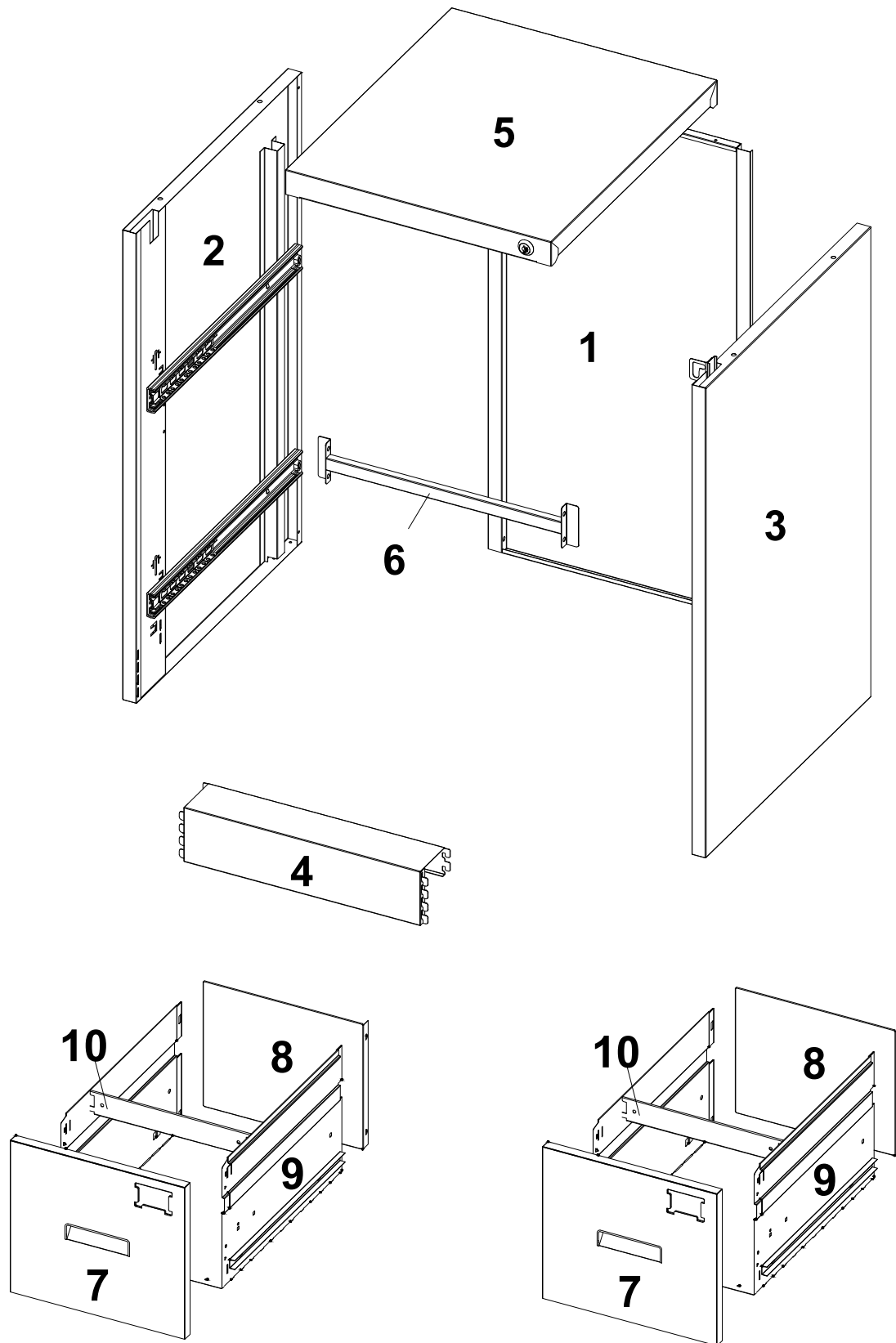
The installation can be finished by 1 person. Also, you can call a friend to join the fun!



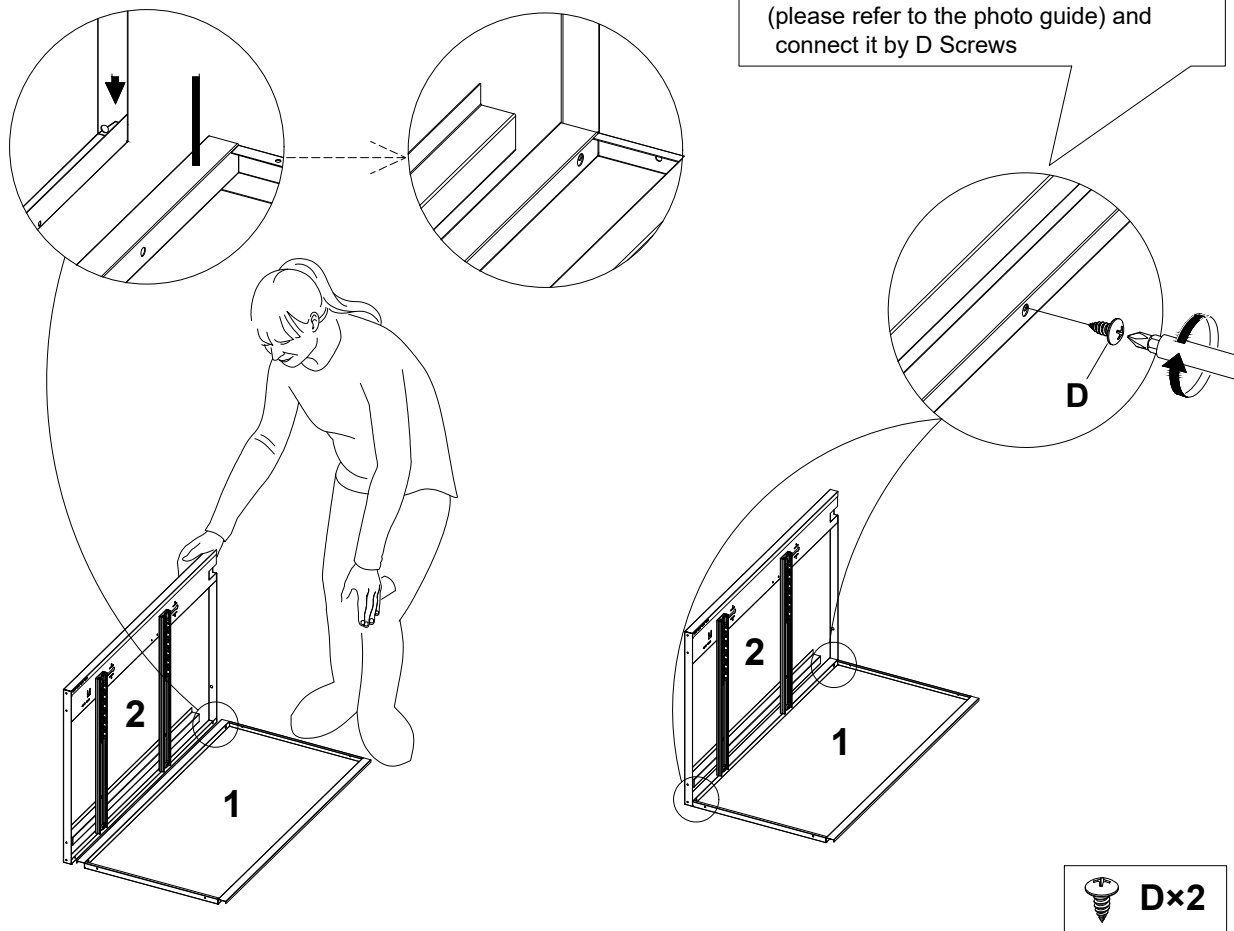
SKU:DSN026BN221A/DSN026WN222A
20005

1×1 		2×1 		3×1 		4×1 	
						5×1 	
6×1 		7×2 		9×2 			
10×2 		8×2 					
A×1 		B×2  M4× $\frac{16\text{mm}}{0.6\text{inch}}$		C×16  M4× $\frac{8\text{mm}}{0.3\text{inch}}$		D×24  M5× $\frac{12\text{mm}}{0.47\text{inch}}$	
				E×4 			
							
							
							

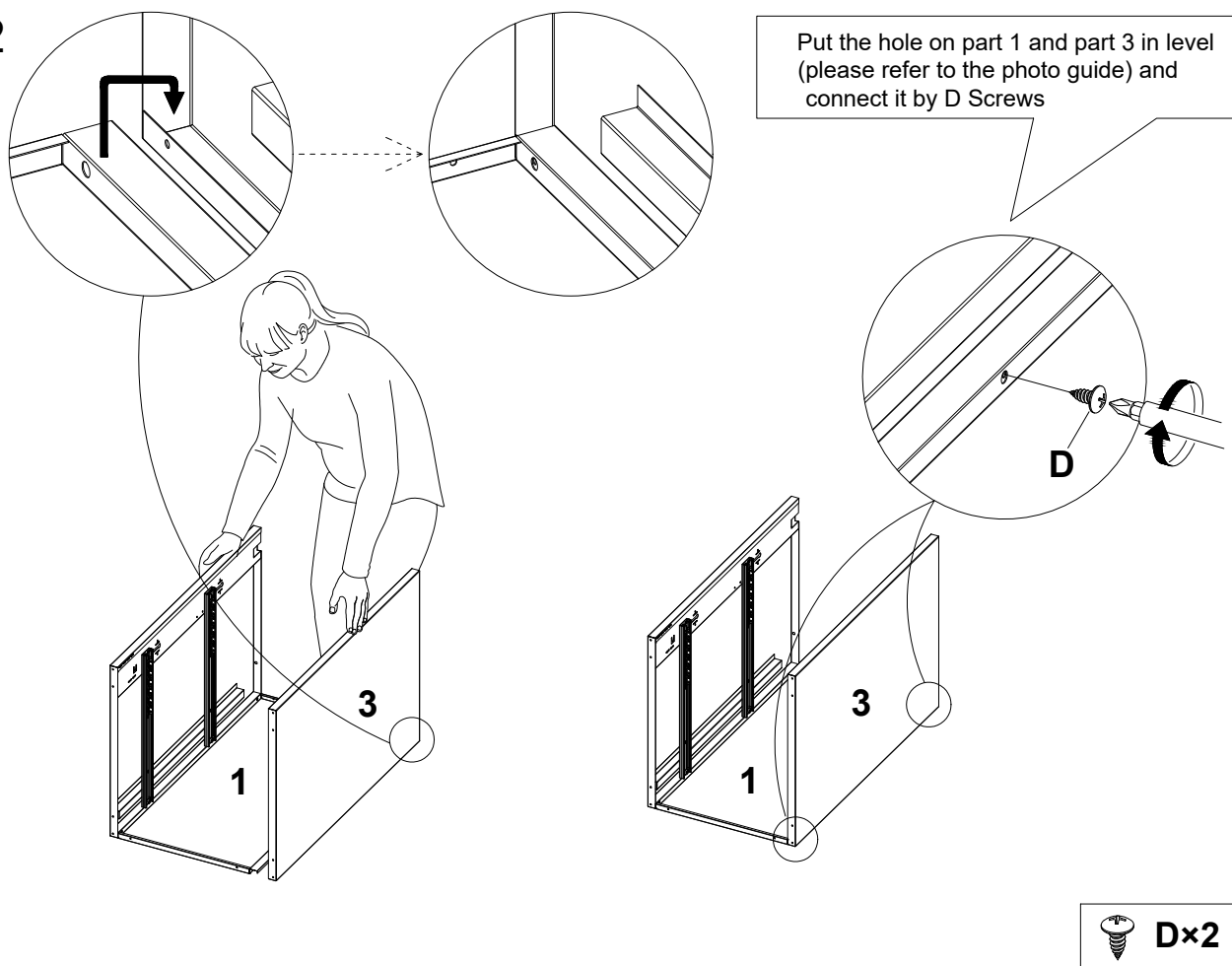
SKU:DSN026BN221A/DSN026WN222A
20005



Step 1

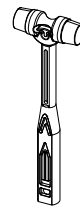
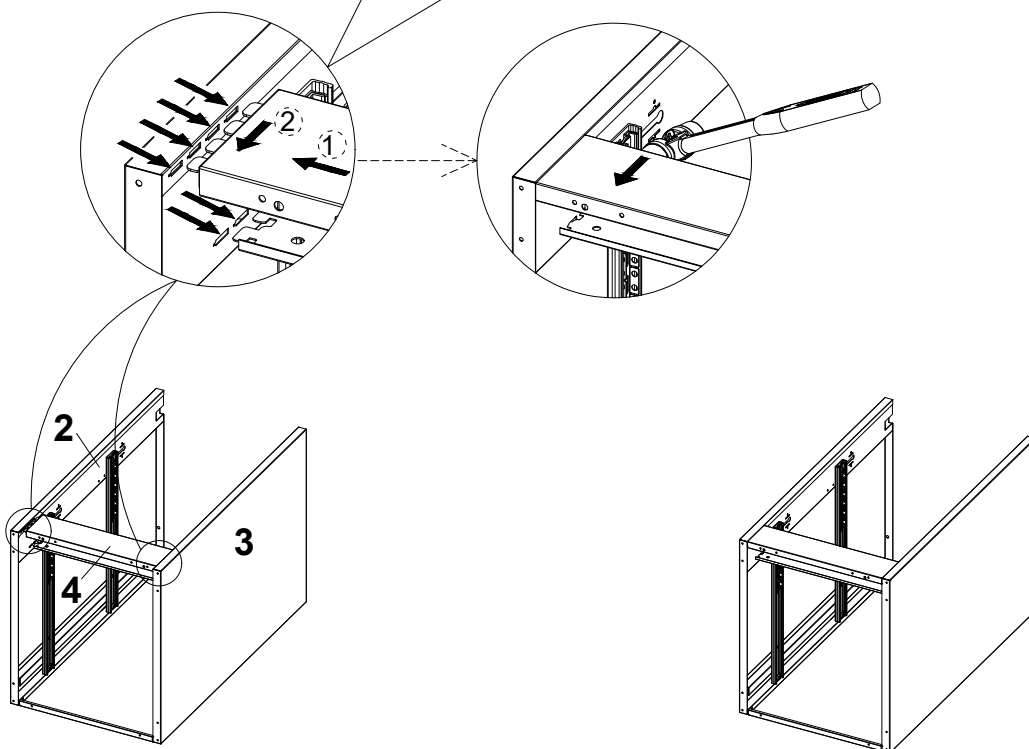


Step 2

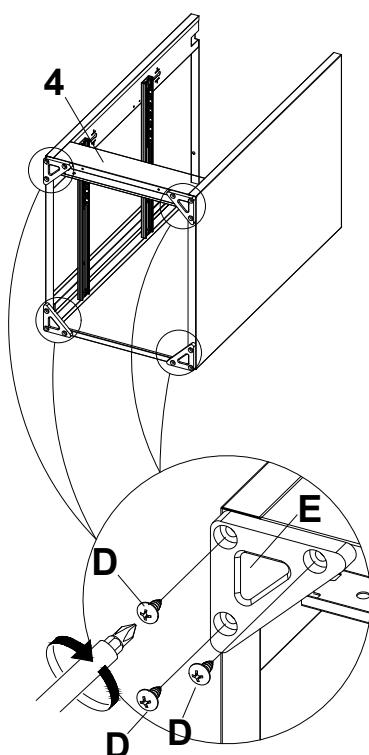


Step 3

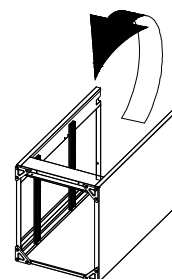
Put the tabs of part 4 into the holes of 2 and 3
Using the soft hammer to adjust it from top to down
until it is flat with the bottom of side panels



Step 4



Please fix 4 part E to the bottom 4 corners by
12 pcs D screws

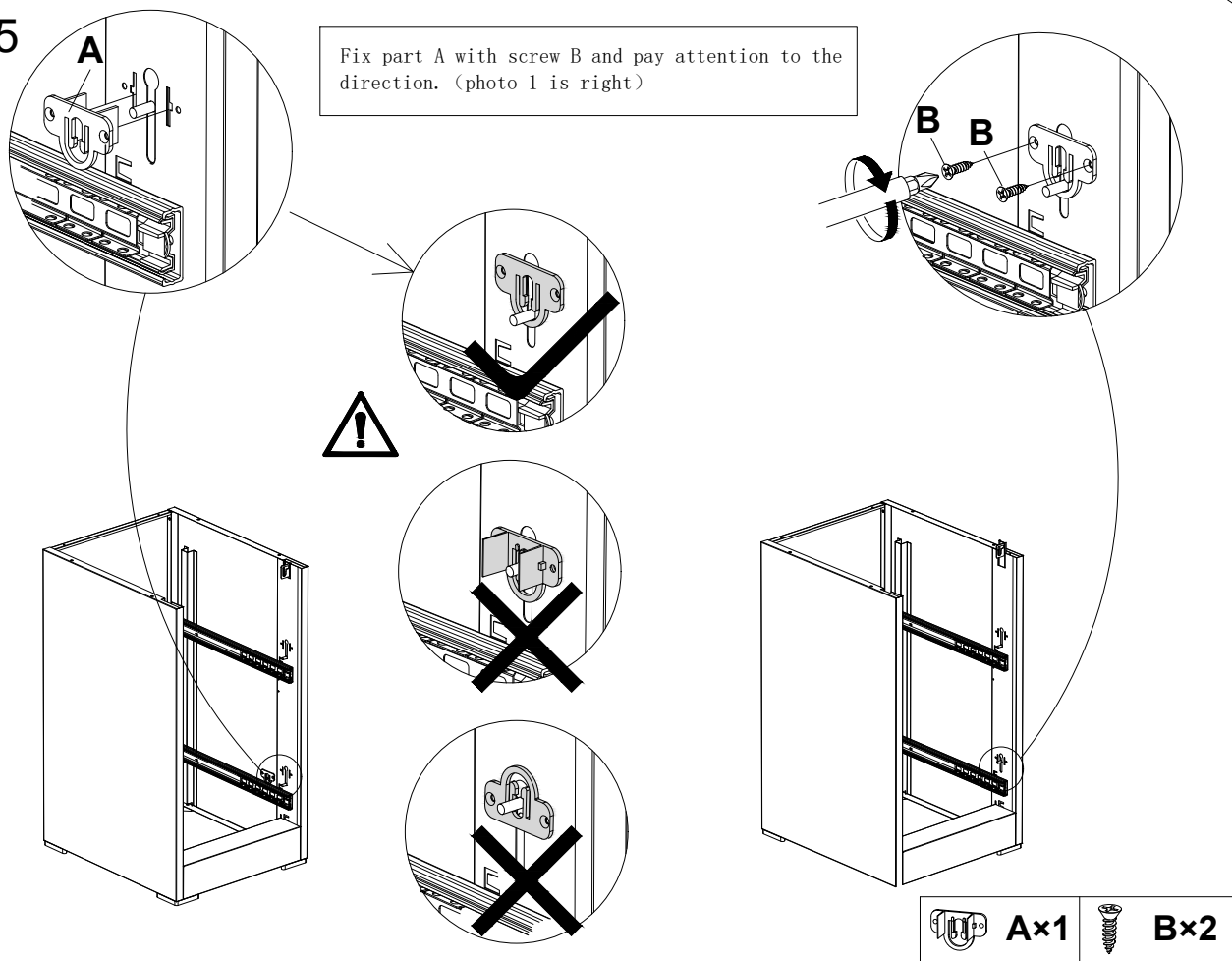


E×4



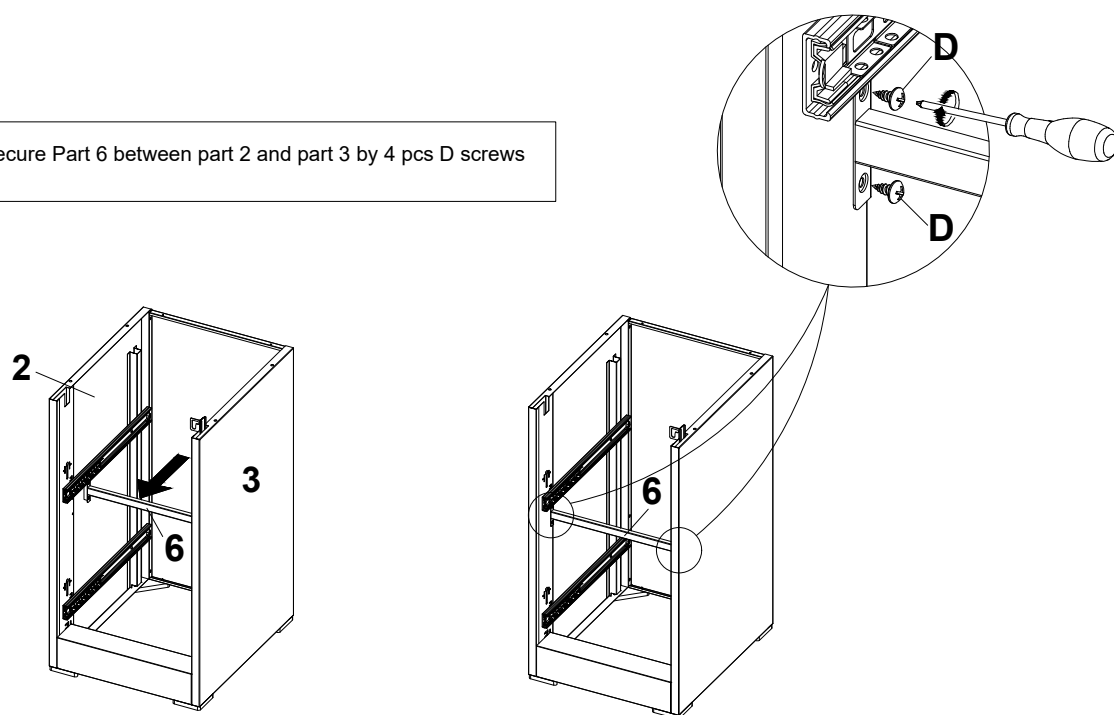
D×12

Step 5

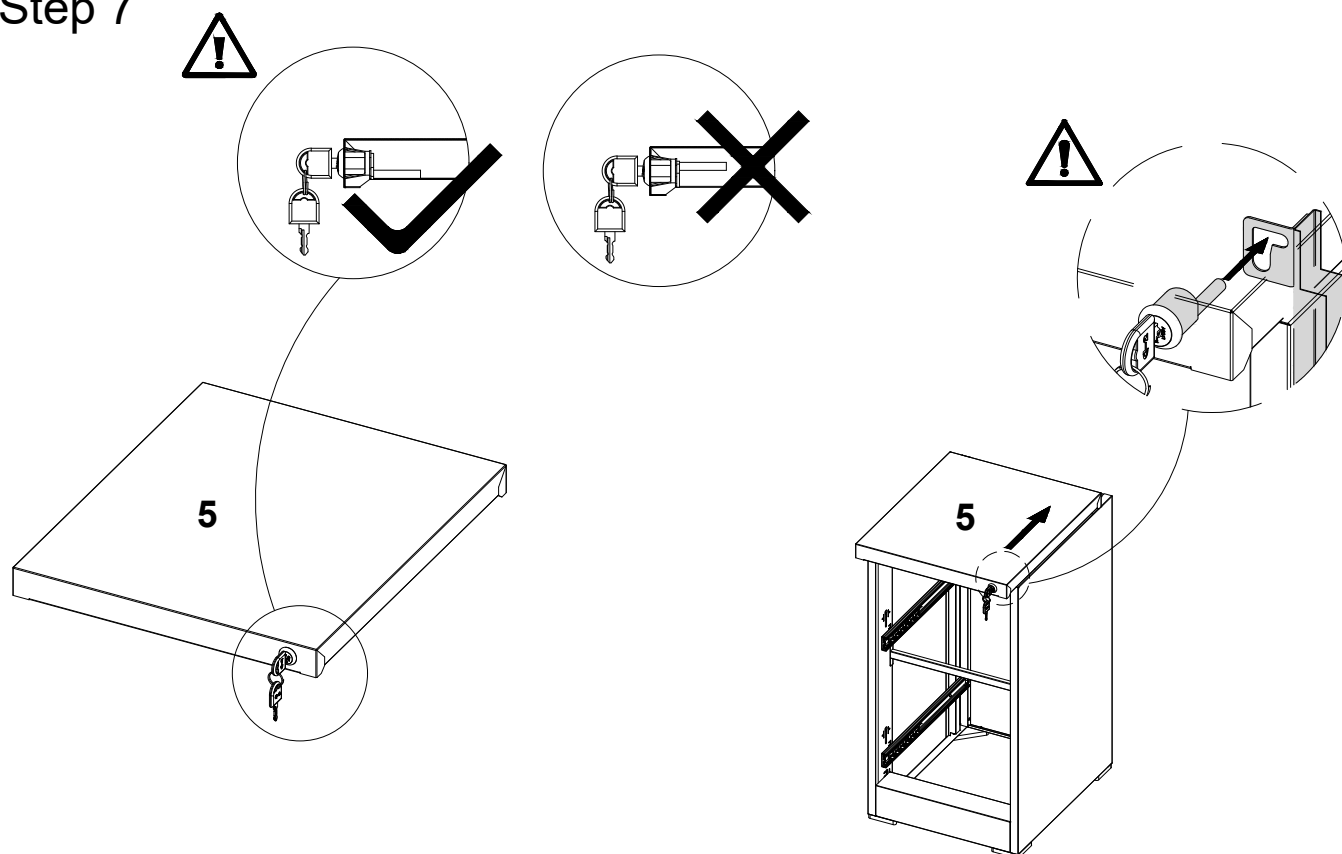


Step 6

Secure Part 6 between part 2 and part 3 by 4 pcs D screws



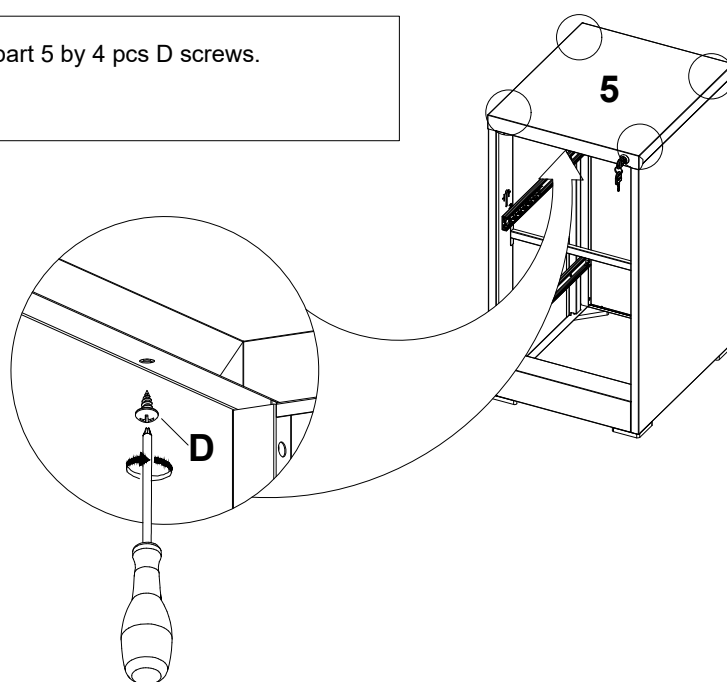
Step 7



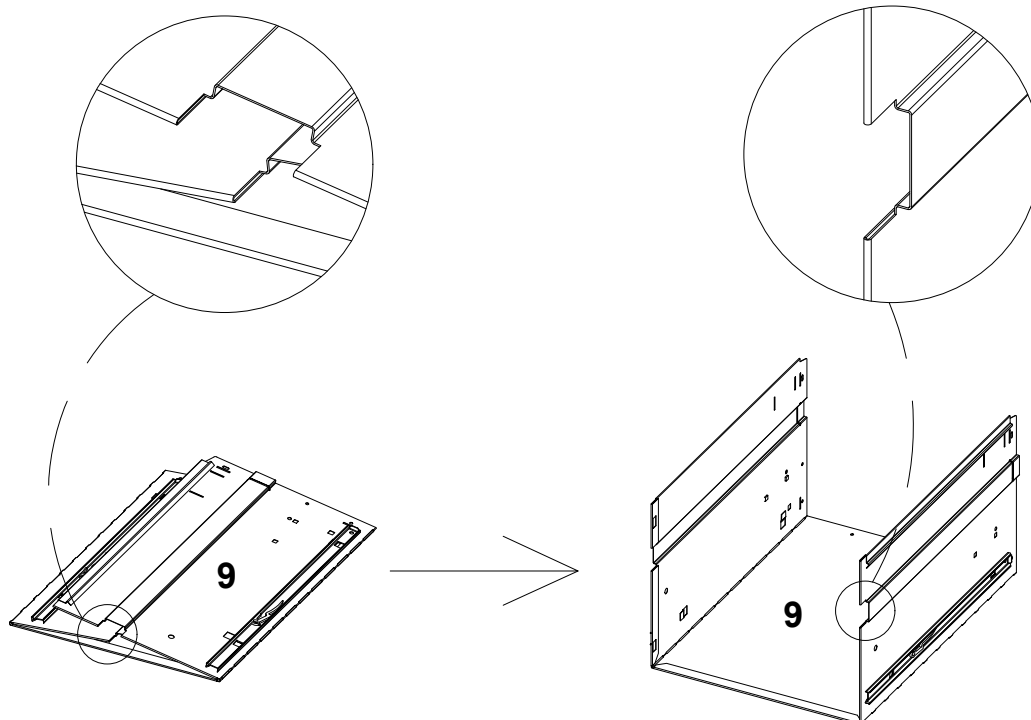
With the lock rod down (refer to the photo direction), insert part 5 to the holes of parts

Step 8

Fix the part 5 by 4 pcs D screws.

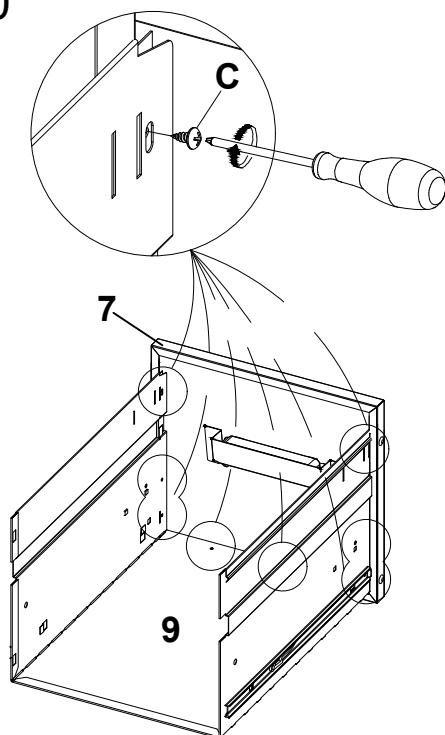


Step 9



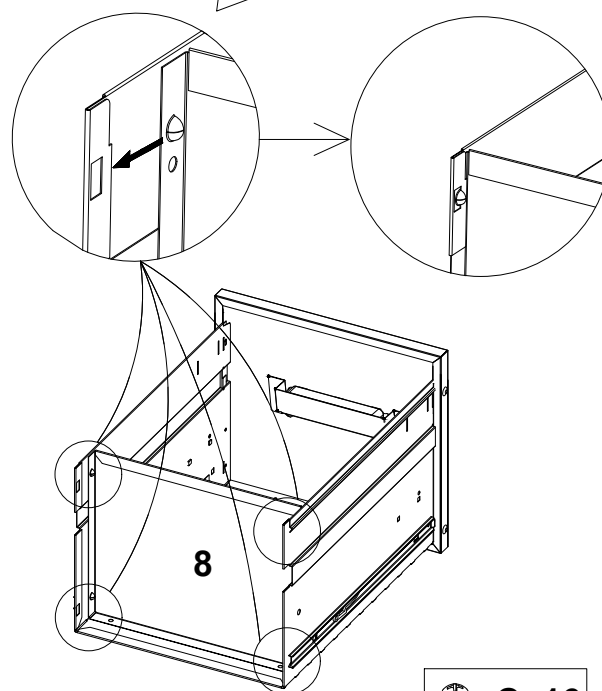
Please open part 9 and straighten the side of the part 9 (drawer)

Step 10



Connecting 7 and 9 together with 6pcs C screws.

Tap part 8 backwards until the edge protrusion snaps into the hole in part 9

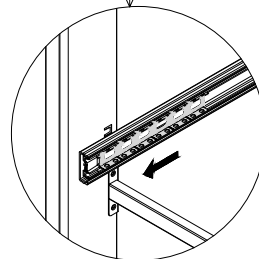
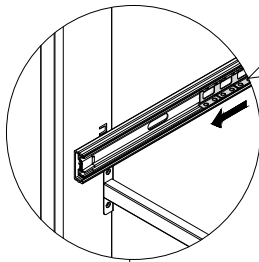


 **C×16**

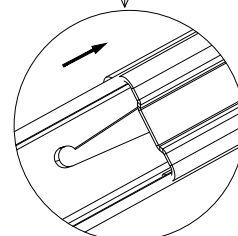
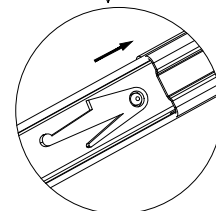
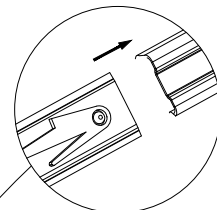
Step 11

STP1

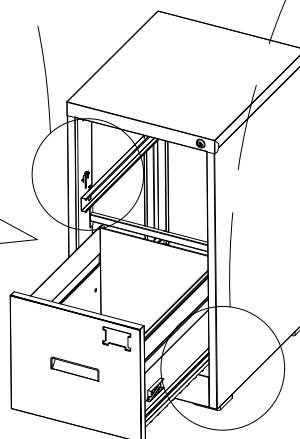
Most important step:A
Slide the steel ball to the
front of the outside of
cabinet firstly



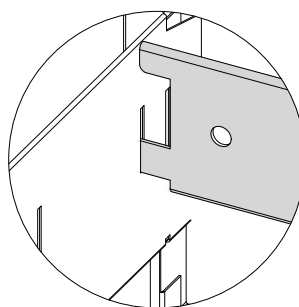
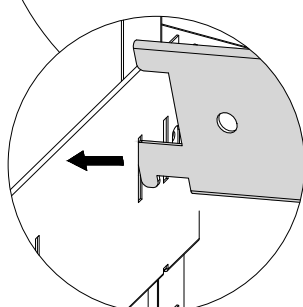
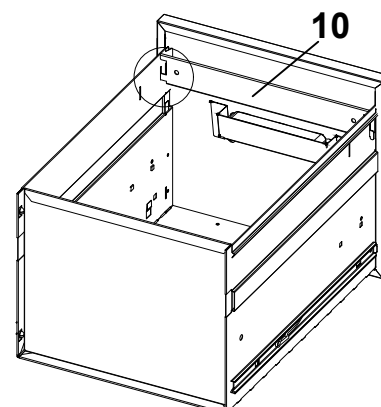
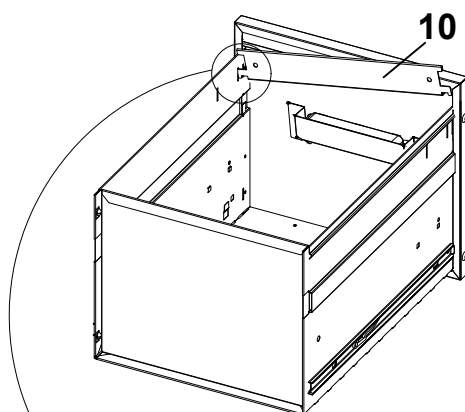
STP2



B:Insert the inner rails on both sides of the
drawer into the outer rails on both sides
of the cabinet at the same time. Two people
lay the drawer flat and pull it in and out slowly.
After pulling it to the end and out slowly twice,
the slide track works normally. if it works failed,
please follow the slide track removal
instructions, open it and reinstall it.



Step 12



Step 13

