

ZG-8110 Urinal Installation Instructions



This urinal with built-in sensor is already assembled at the factory and can be used with just a few simple operations.

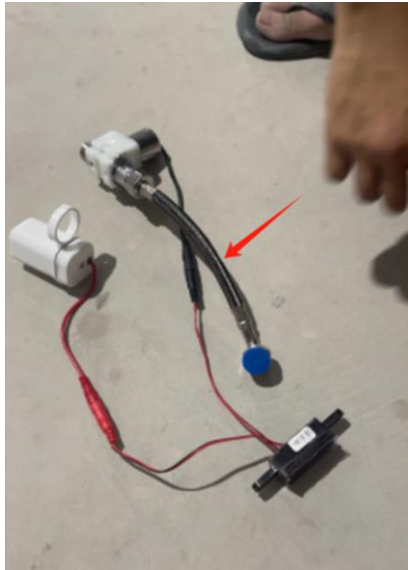
The operation steps are as follows:

According to the position of the holes on the back, drive screws on the wall and hang the urinal.

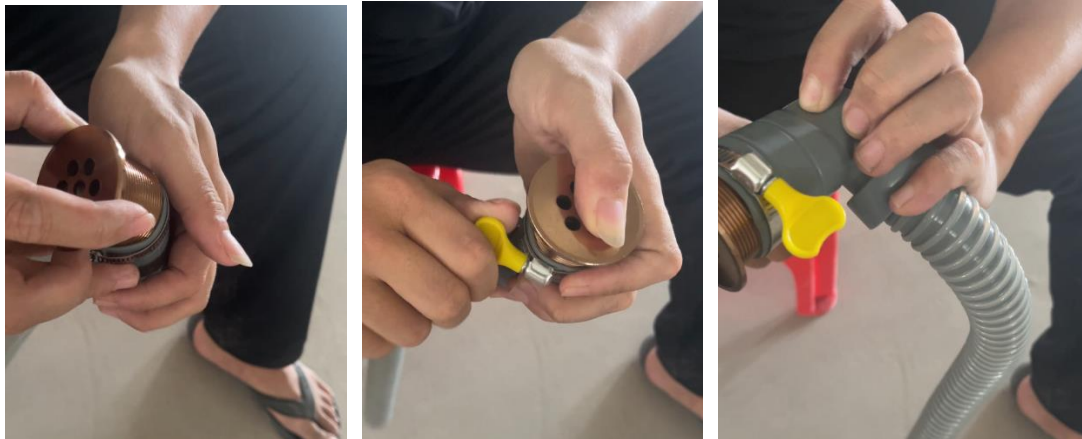


ZG-8110 Urinal Installation Instructions

The picture below shows the sensor, which has been connected. The red arrow indicates the water inlet pipe, which can be connected to the water inlet pipe.



The picture below shows the drain. Connect the drain to the drain pipe and tighten the fixing screws on the side.



As shown in the picture below, insert the battery and you can use it.



ZG-8110 Urinal Installation Instructions

If the water output is too large or too small in a situation similar to the picture below, you can adjust the water output through the regulating valve.



The part of the black coil in the picture below is the water outlet regulating valve.

