

INSTALLATION GUIDE

1



All accessory parts

2



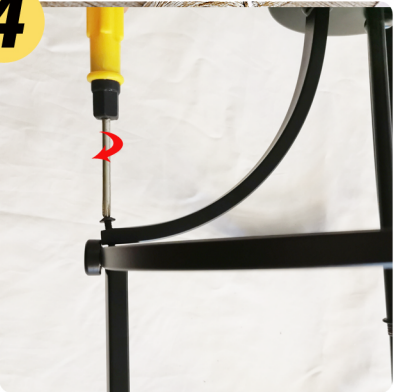
Assemble the canopy frame. Please refer to above image.

3



Tighten the screw to fix the iron bar to the bottom ring.

4



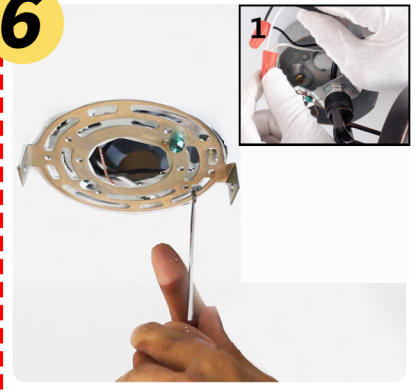
Assemble the top lamp frame. Please refer to the picture.

5



Pass wire through center tube, then turn the bulb fixture body until it is tight.

6



Fix the mounting bracket on the electrical box, then connect the wires.

7



Turn the screw to fix the lamp frame to the ceiling.

8



Hang the crystal bar on the hole.

9



Screw 3 E12 bulb. The light fixture is ready to use. (Bulbs are not included.)

⚠ WARNING

- TO AVOID THE RISK OF FIRE OR SHOCK, FIXTURE MUST BE INSTALLED IN COMPLIANCE WITH ALL APPLICABLE NATIONAL AND LOCAL ELECTRICAL/BUILDING CODES. DISCONNECT POWER BEFORE RELAMPING OR WIRING THE FIXTURE.
- If an existing fixture is being replaced, remove it and note to which of the wires in the outlet box the fixture was attached. DO NOT SEPARATE AND OTHER WIRES THAT WAY BE IN THE BOX. DO NOT DAMAGE THE INSULATION OF OLDER WIRING.
- In regular circumstances the Black wire will be the "Hot" lead wire and the WHITE wire will be the "Neutral" or "common" lead wire. A GREEN or BARE COPPER wire is the "Ground". In older buildings it is always good practice to reconfirm the polarity of the wiring.

NOTE: For your safety be certain that the circuit breakers controlling outdoor lighting and equipment are GFI breakers.