

Easy to Install

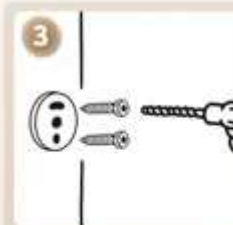
Installation process



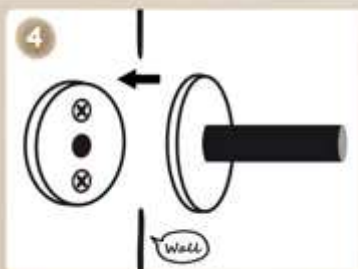
1 First, measure the distance between the two holes on the wall, then drill the hole with a percussion drill.



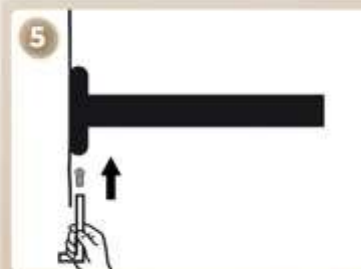
2 Use a hammer to drive the expansion tube into the wall.



3 Align the pendant base's screw holes with the wall's screw holes, then secure them with screws.



4 Place the main body into the fixed seat.



5 Use an Allen wrench to tighten the Allen screws.