

CONCORD TRIM

MORTISE HANDLESET ENTRANCE TRIM



SPECIFICATIONS

LOCK TYPE	Mortise
STYLE	Traditional
LOCK FUNCTION	Entry
MAXIMUM DOOR THICKNESS	2.25
MINIMUM DOOR THICKNESS	1.5

CONCORD TRIM

MORTISE HANDLESET ENTRANCE TRIM

ESTATE PORTFOLIO

Model Number:
6571.190.ENTR

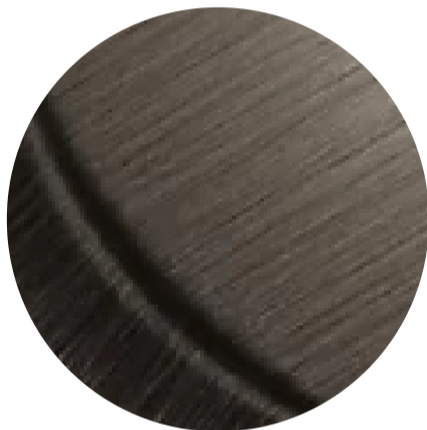
Key Features

- ✓ The Concord Entrance Trim is an appealing and well-crafted square design that is perfect for any home front door.
 - ✓ Shown in Standard Entry Function, but also available in Double Cylinder, Full Dummy and Exterior Only, as well as individual escutcheons Cut for Cylinder, Cut for Emergency Release, Cut for Knob and Cut for Turn Knob.
 - ✓ Customize by substituting any interior knob or lever of your choice or by utilizing the interior escutcheon plate to create passage, privacy, dummy or entry sets. Thin and thick door kits available to accommodate a wide range of door conditions and applications.
- The mortise application is a unique door condition that requires custom door preparation, specification and installation. The full mortise
- ✓ specification requires multiple components, including this decorative trim. To learn more about specifying mortise, please refer to the "Know Before You Go" section on this page.

FINISHES OPTIONS



Lifetime (PVD) Satin Nickel - 056



Lifetime (PVD) Graphite Nickel - 076



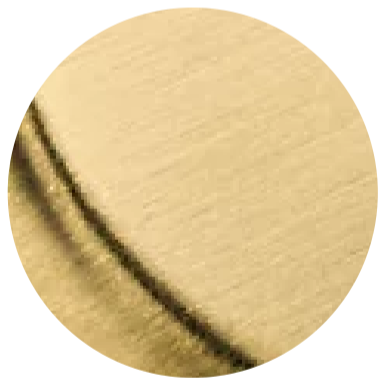
Lifetime (PVD) Polished Nickel - 055



Polished Chrome - 260



Lifetime (PVD) Polished Brass - 003



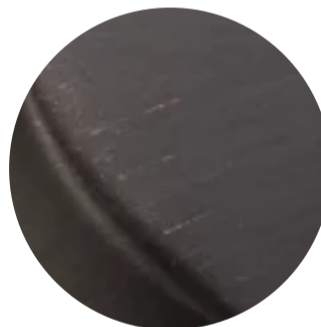
Lifetime (PVD) Satin Brass - 044



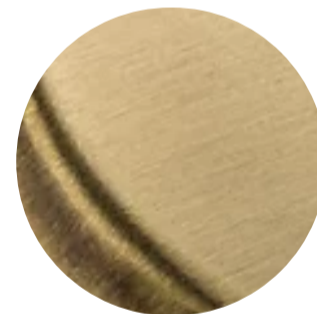
Satin Black - 190



Oil Rubbed Bronze - 102



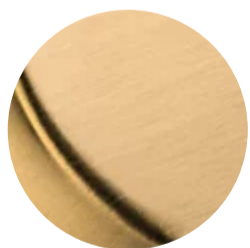
Venetian Bronze - 112, 11P



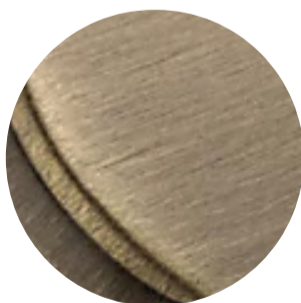
Satin Brass & Brown - 060



Non-lacquered Brass - 031



Vintage Brass - 033



Satin Brass & Black - 050

SPECIFICATIONS

LOCK TYPE	Mortise
STYLE <small>all measurements in inches</small>	Traditional
LOCK FUNCTION	Entry
MAXIMUM DOOR THICKNESS	2.25
MINIMUM DOOR THICKNESS	1.5

CONCORD TRIM

MORTISE HANDLESET ENTRANCE TRIM

Set	6571.xxx.DBLC	Double Cylinder	Set
Set	6571.xxx.FD	Full Dummy	Set
Set	6571.xxx.ENFD ¹	1 Active Entrance Set + 1 Full Dummy Set	2 Sets
Ext	6604.xxx	Active Exterior Trim only	Each
Ext	6604.xxx.DM	Dummy Exterior only	Each
Interior	6794.xxx.KC	Interior Escutcheon – Cut for Cylinder (KC), Double Cylinder	Each
Interior	6794.xxx.KE	Cut for Emergency Release (KE)	Each
Interior	6794.xxx.KN	Cut for Knob (KN), Passage/Dummy	Each
Interior	6794.xxx.KT	Interior Escutcheon w/ Turn Knob (KT)	Each

- ¹ENFD only available in 050 & 112, to ensure a finish match on all components.

SPECIFICATIONS

LOCK TYPE	Mortise
STYLE	Traditional
LOCK FUNCTION	Entry
MAXIMUM DOOR THICKNESS	2.25
MINIMUM DOOR THICKNESS	1.5