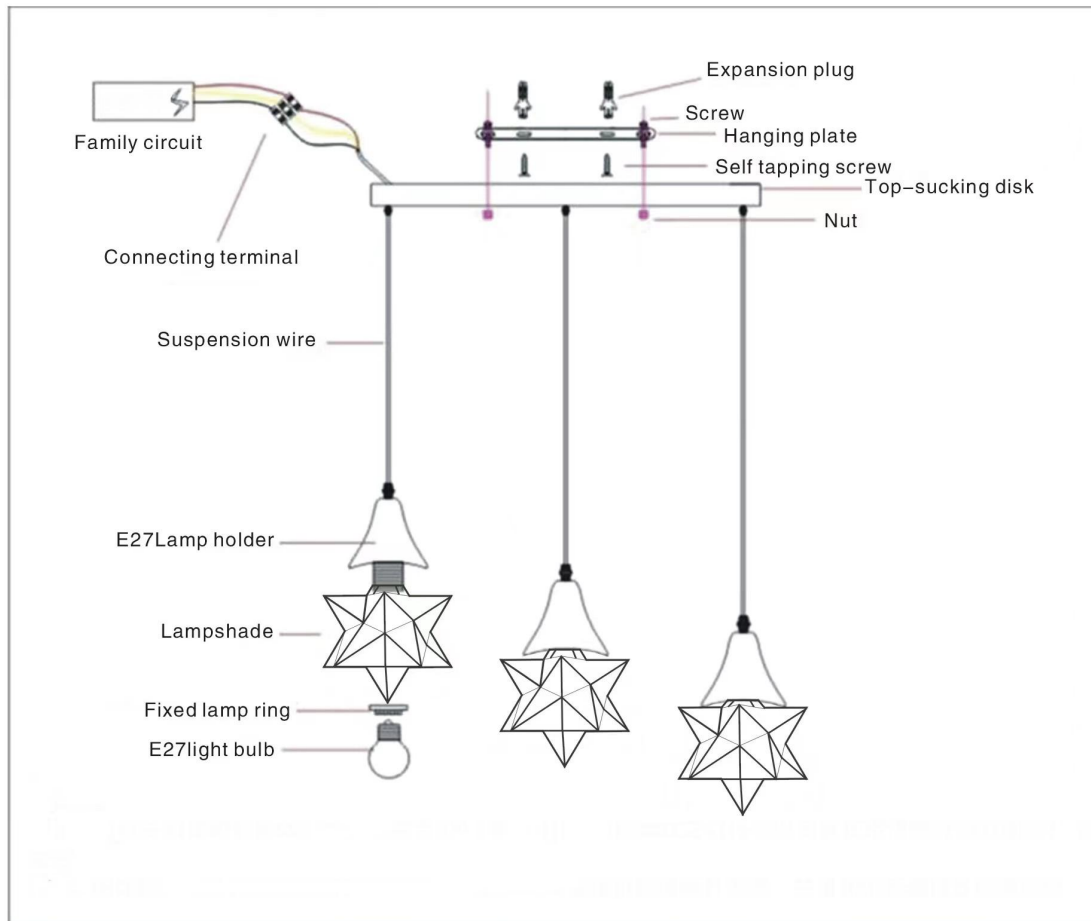


Installation Instructions

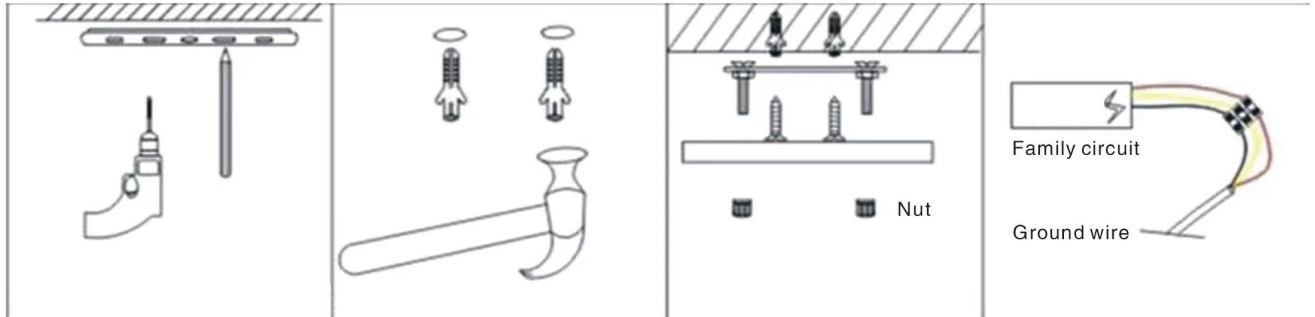


Please Note:

1. Please wear gloves when installing, do not install on the damp ceiling.
2. Follow the instruction when you set up the lamp.
3. The lamp holder should be kept at least 0.2 meters away from the irradiated object.
4. Lights with this sign can be installed on surfaces made of combustible material.

Warning:

1. Lamps with this sign should be installed indoors.
2. Please turn off the power when cleaning, checking and repairing the lamp. Non-corrosive detergent are required.



Using the hanging board as a reference, set up a place on the ceiling. Then make a hole with a relative distance of 13cm.

Knock the expandable rubber into the holes on the wall with a relative distance of 13cm.

Align the expansion rubber with self-tapping screws and twist them in clockwise. Then fix the hanging board with screws and nuts.

Hang the lamp and connect the main line from the lamp with the neutral line from home as shown in the picture.



The 20cm star is installed differently than the 30/40cm star. The light bulb should be installed first, then attach it to the top of the star.

The three screws should be evenly twisted, otherwise it won't be locked perfectly.
When twisting the screws do not use too much force, otherwise it will slip.

