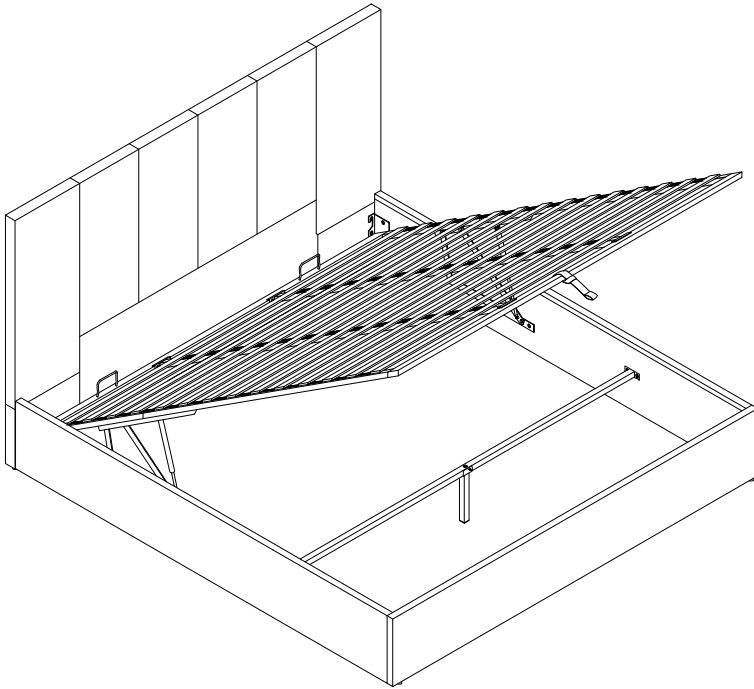


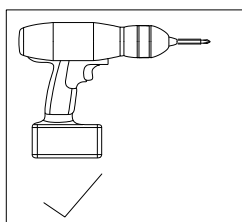
ASSEMBLY INSTRUCTION



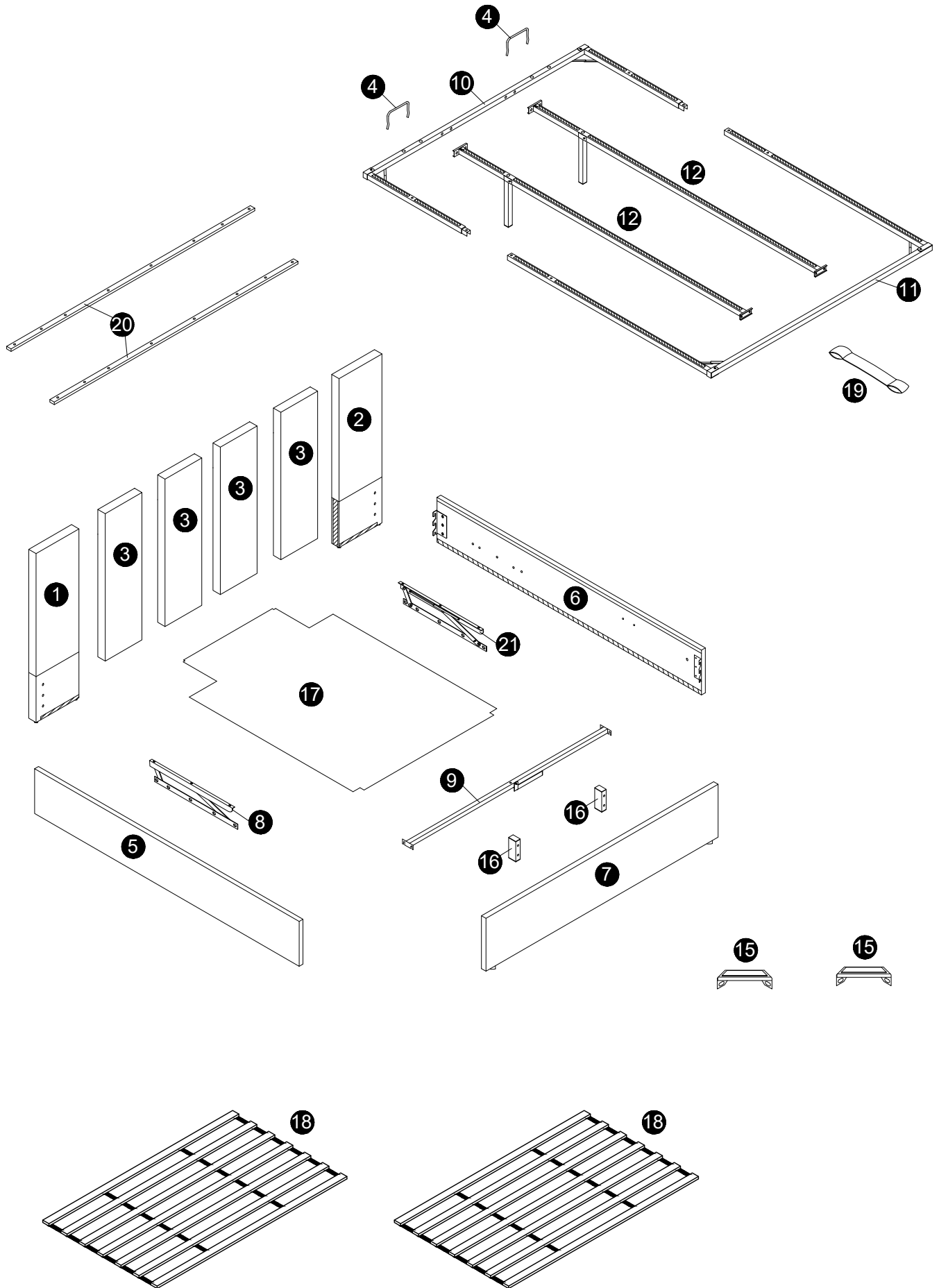
Please TEAR OFF this shrink film from side!
DO NOT USE CUTTER!

IMPORTANT NOTE

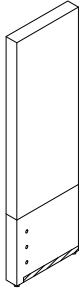
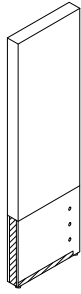
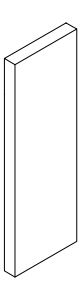
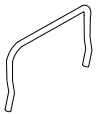
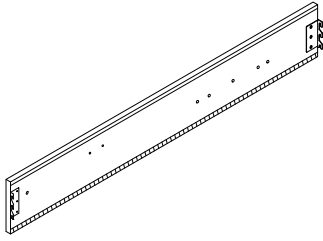
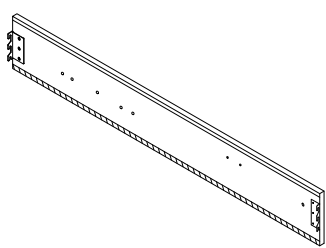
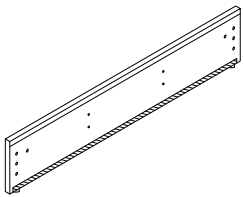
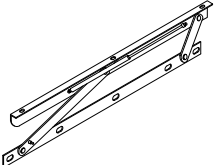
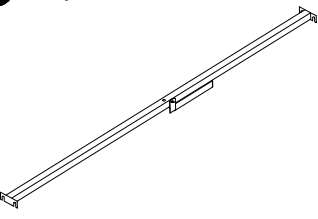
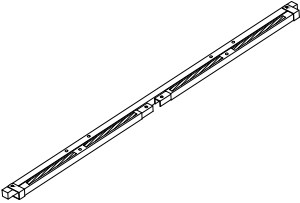
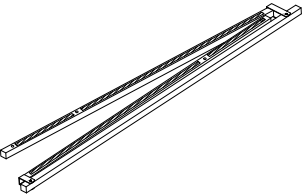
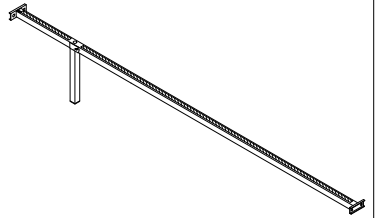

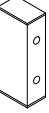
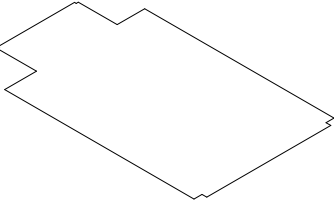
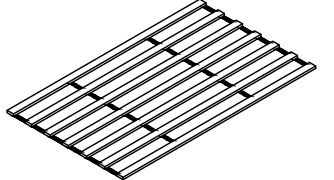
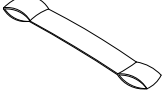
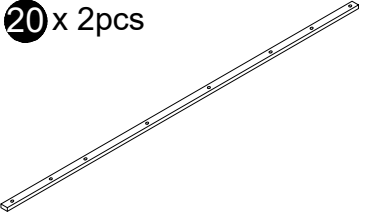
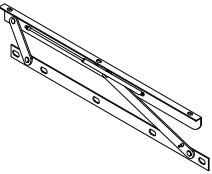
1. FOR THE PROTECTION OF YOUR FURNITURE, PLACE ALL PARTS ON A CLEAN AND SMOOTH SURFACE TO PREVENT ANY DAMAGE.
2. DO NOT USE POWER TOOLS TO ASSEMBLE THE BED.
3. PLEASE PERIODICALLY CHECK ALL FITTINGS AND RE-TIGHTEN AS NECESSARY.
4. DO NOT USE THE BED UNLESS ALL BOLTS AND SCREWS ARE FIRMLY SECURED.
5. NEED PARTS OR ASSISTANCE? EMAIL US AT
6. YOU CAN ASSEMBLE IT WITH OUR PACKAGING TOOLS OR WITH A.



PART LIST



PART LIST

1 x 1pc 	2 x 1pc 	3 x 4pcs 	4 x 2pcs 
5 x 1pc 	6 x 1pc 	7 x 1pc 	8 x 1pc 
9 x 1pc 	10 x 1pc 	11 x 1pc 	12 x 2pcs 
15 x 2pcs 	16 x 2pcs 	17 x 1pc 	18 x 2pcs 
19 x 1pc 	20 x 2pcs 	21 x 1pc 	

HARDWARE LIST



H1 M5 x 1pc



H2 M8x25mm x 32pcs



H3 M8x35mm x 6pcs



H4 M8x60mm x 4pcs



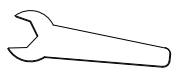
H5 M8 x 57pcs



H6 M8x17mm x 67pcs



H7 M8 x 6pcs

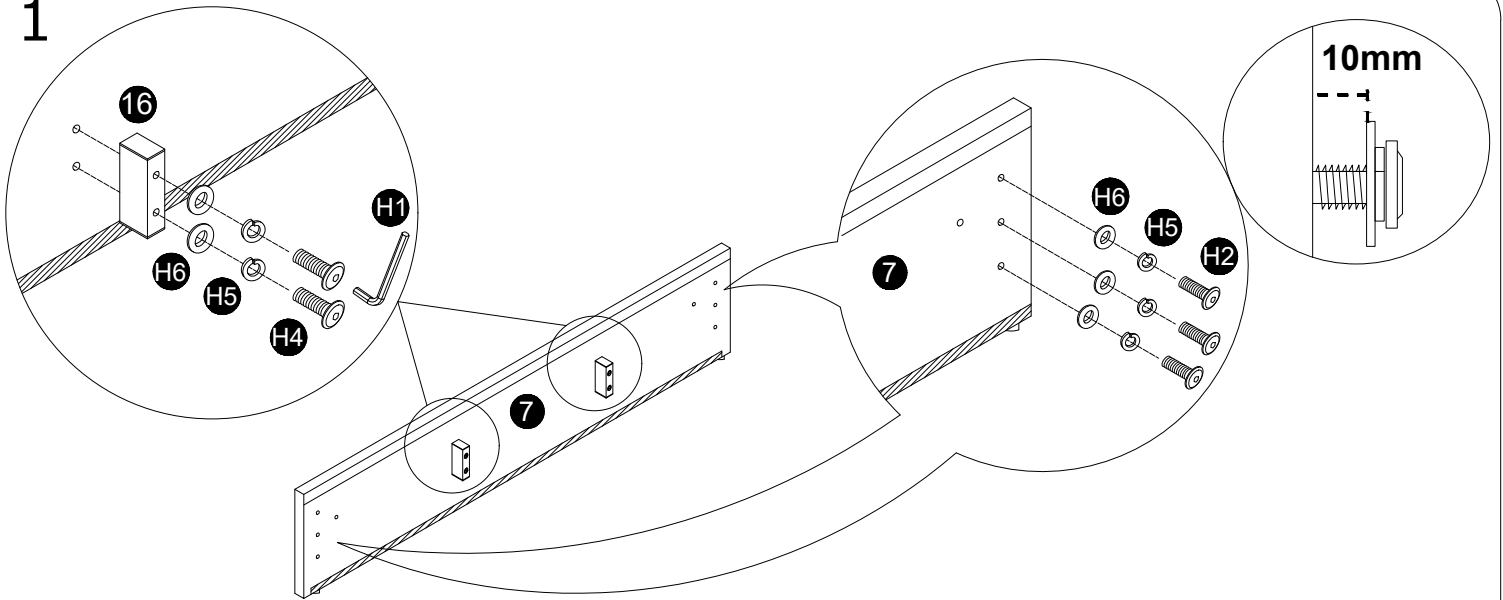


H8 M14 x 1pc



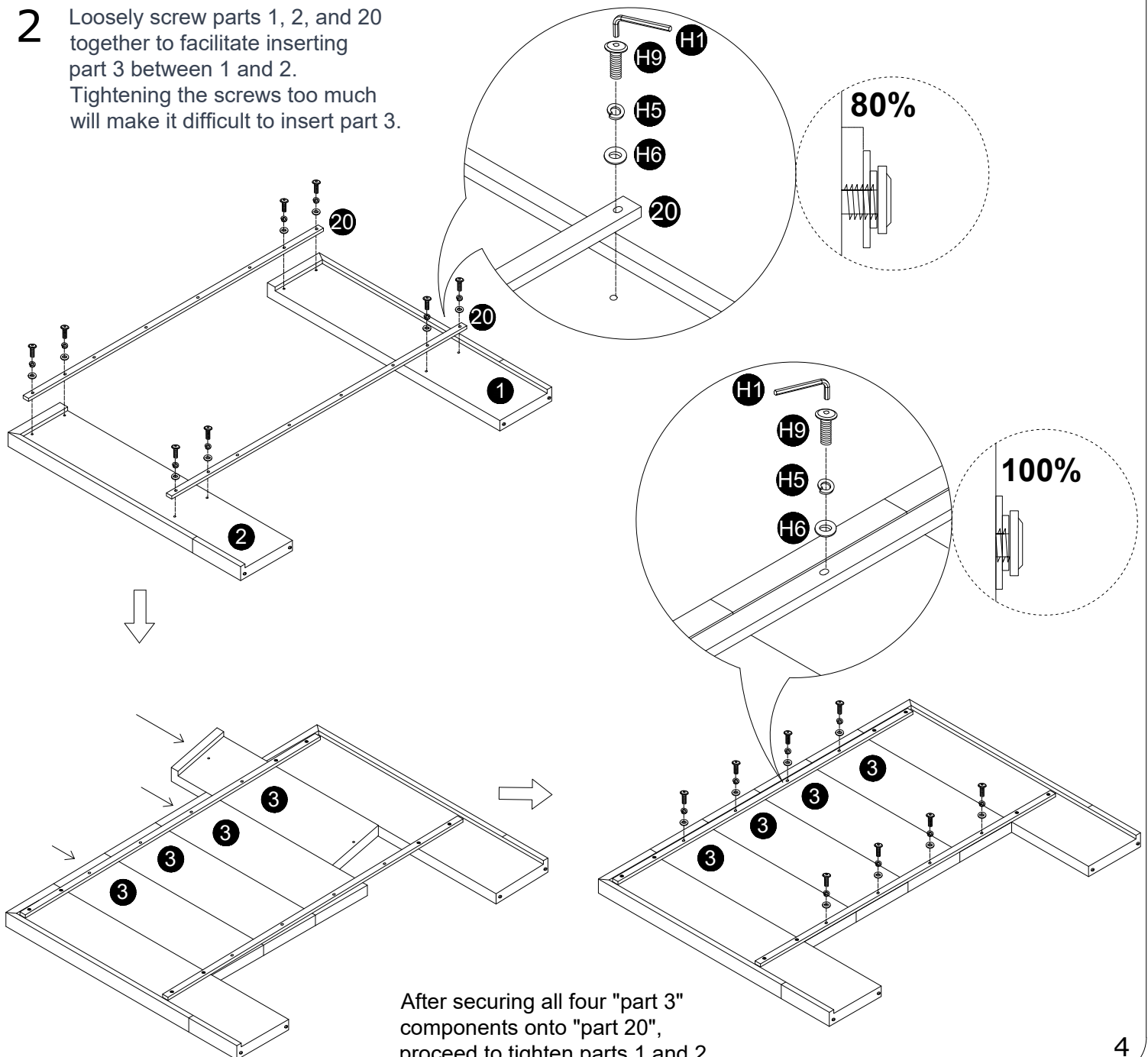
H9 M8x45mm x 25pcs

1



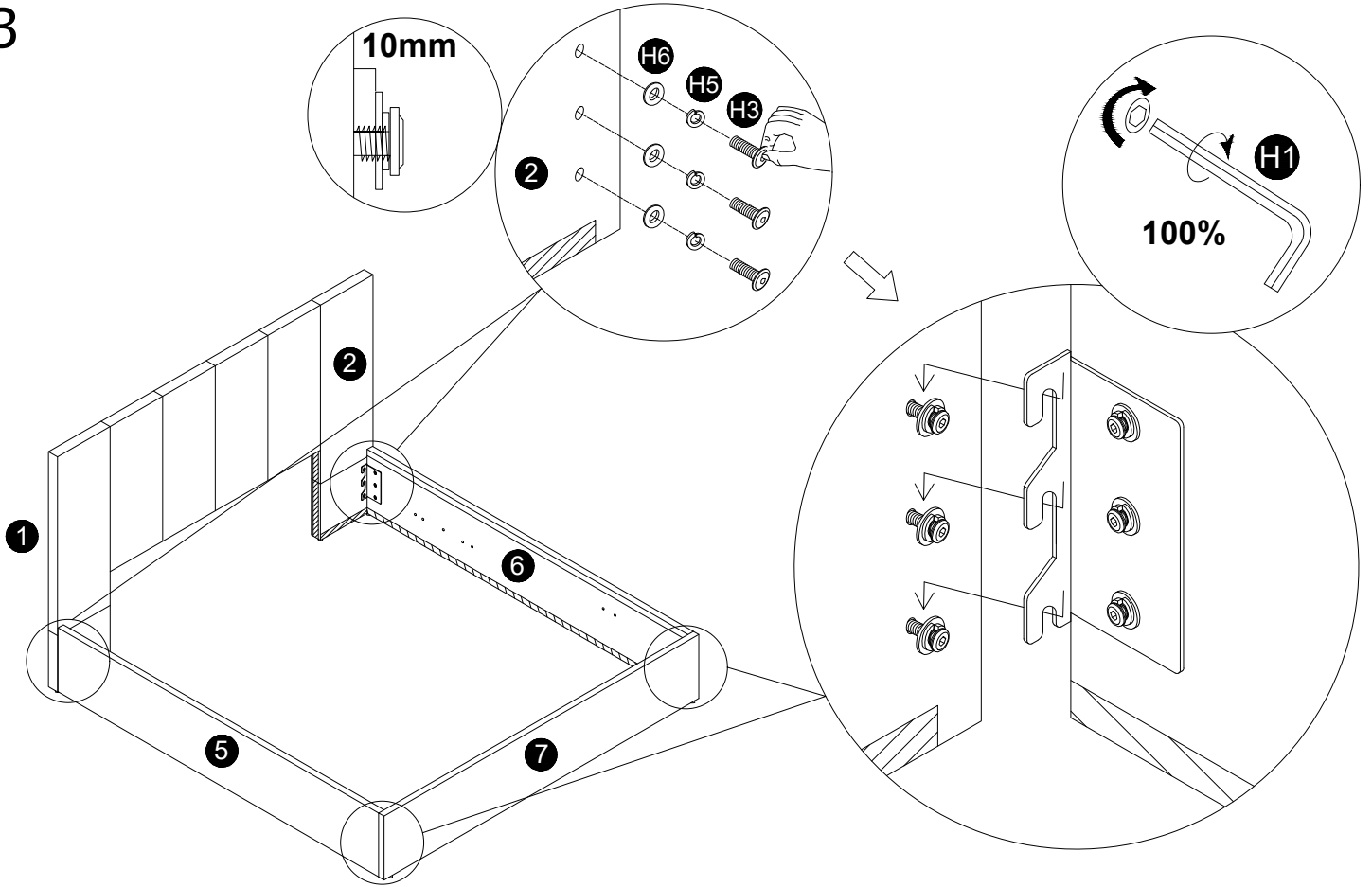
2

Loosely screw parts 1, 2, and 20 together to facilitate inserting part 3 between 1 and 2. Tightening the screws too much will make it difficult to insert part 3.

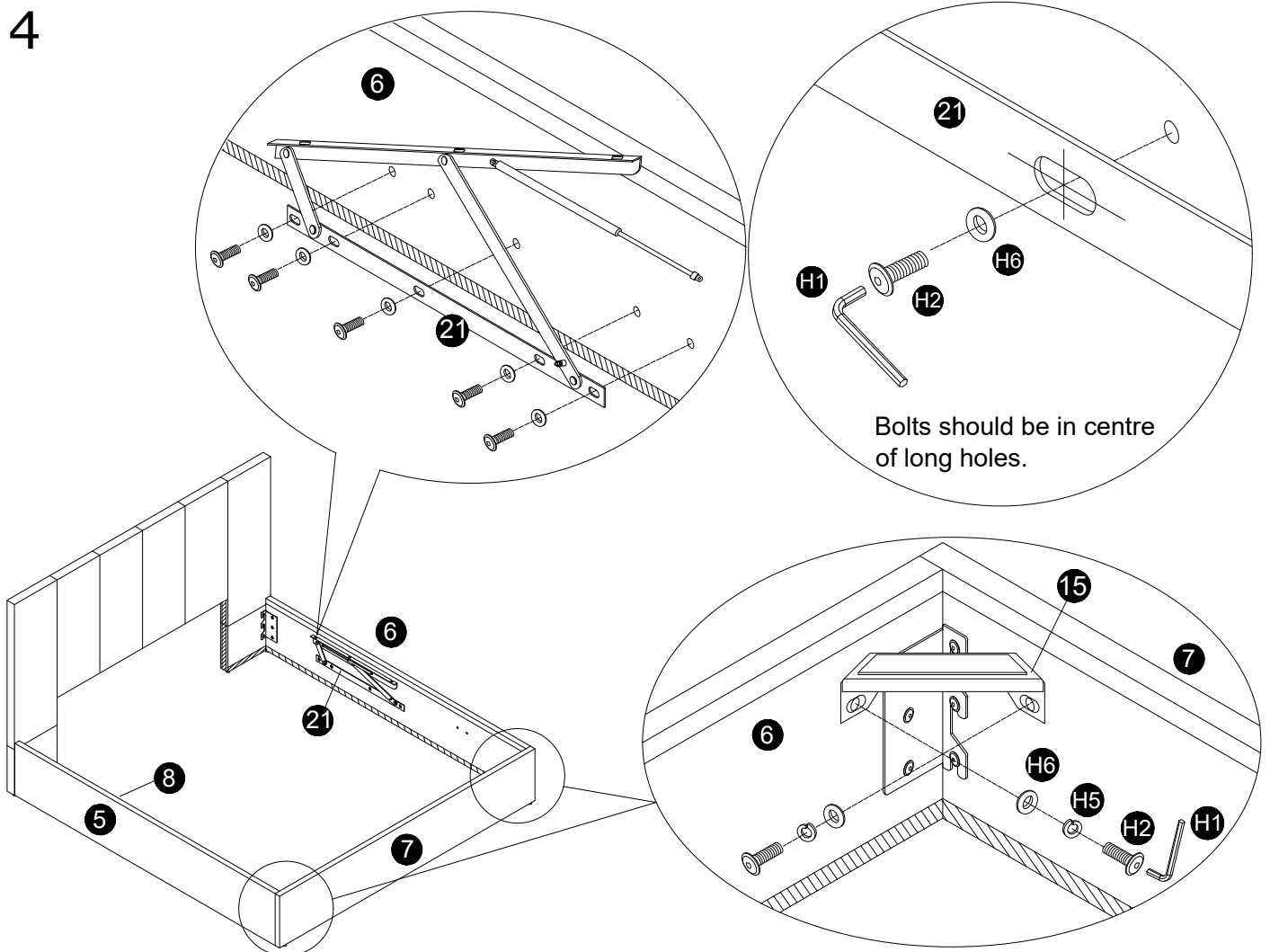


After securing all four "part 3" components onto "part 20", proceed to tighten parts 1 and 2.

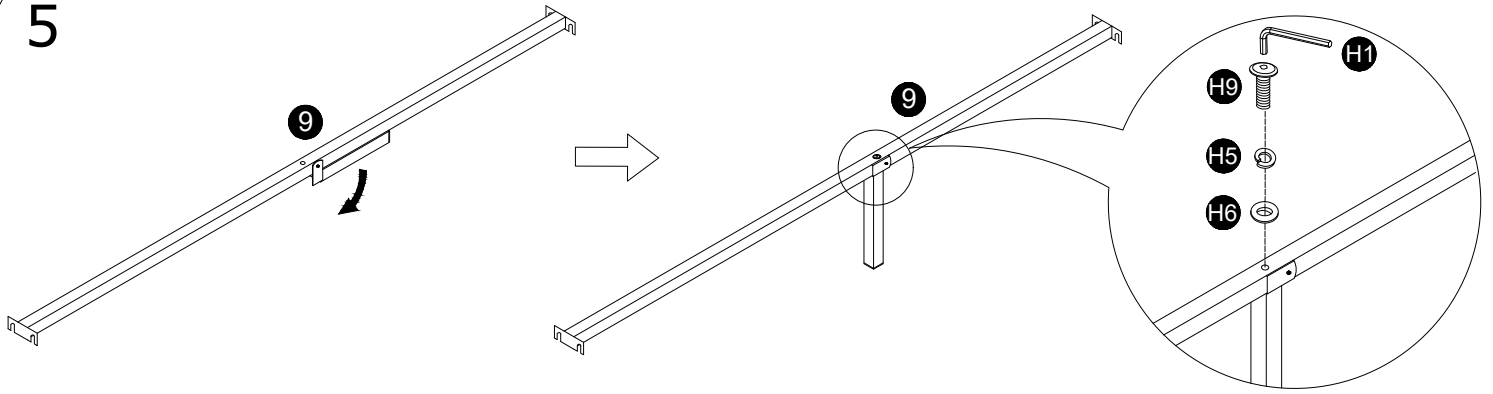
3



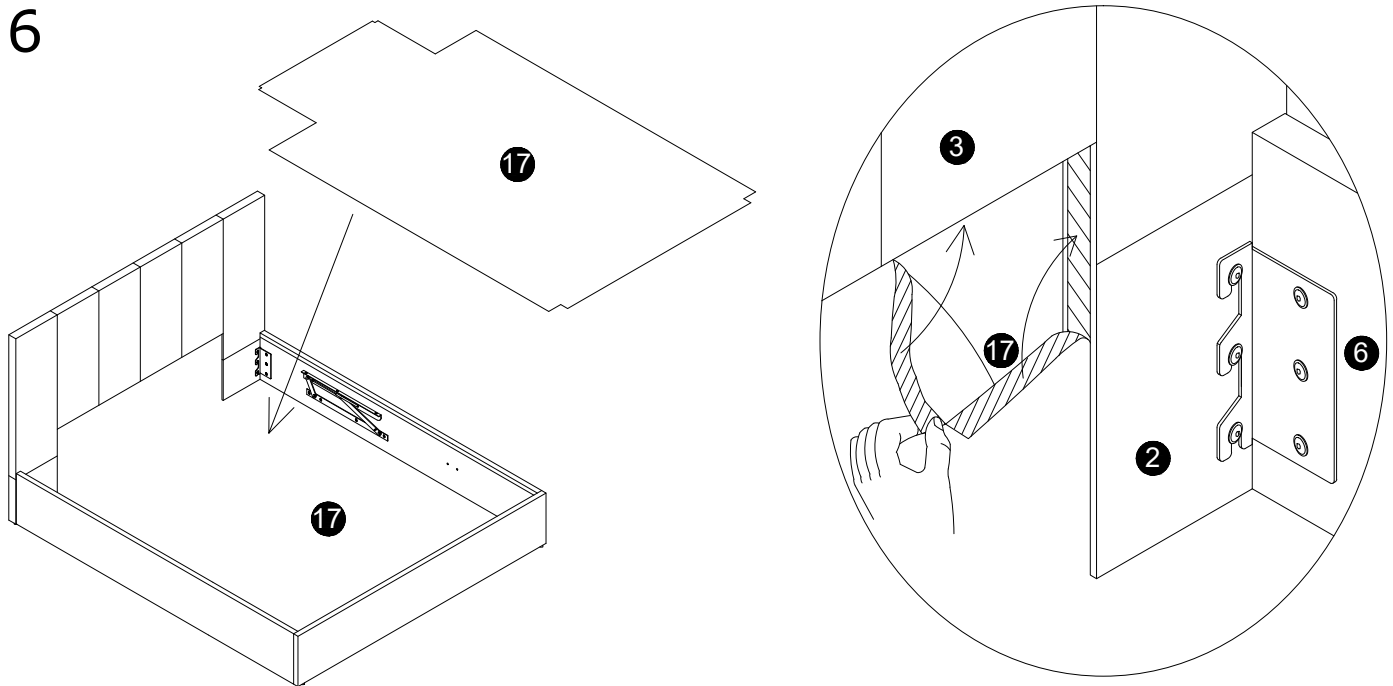
4



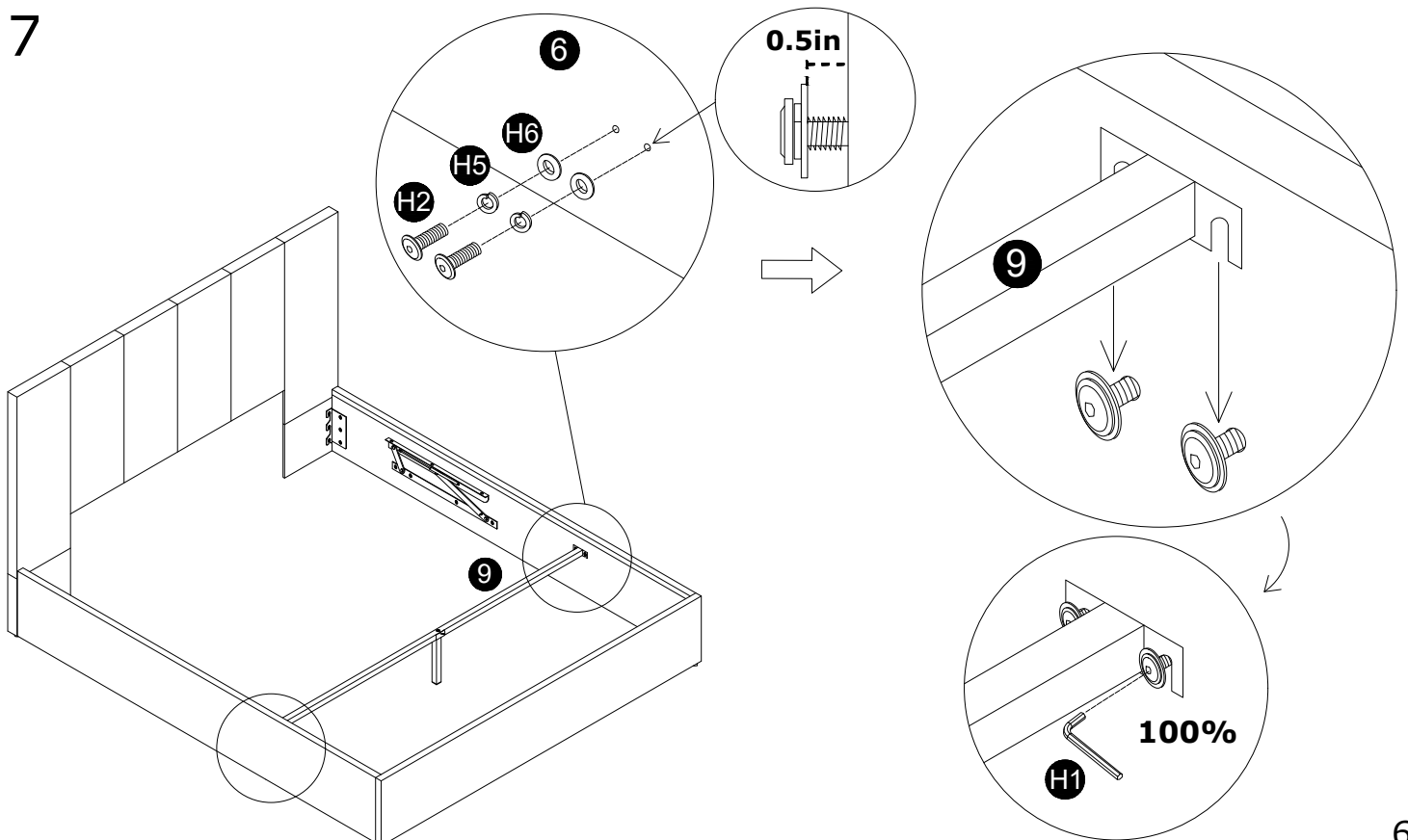
5



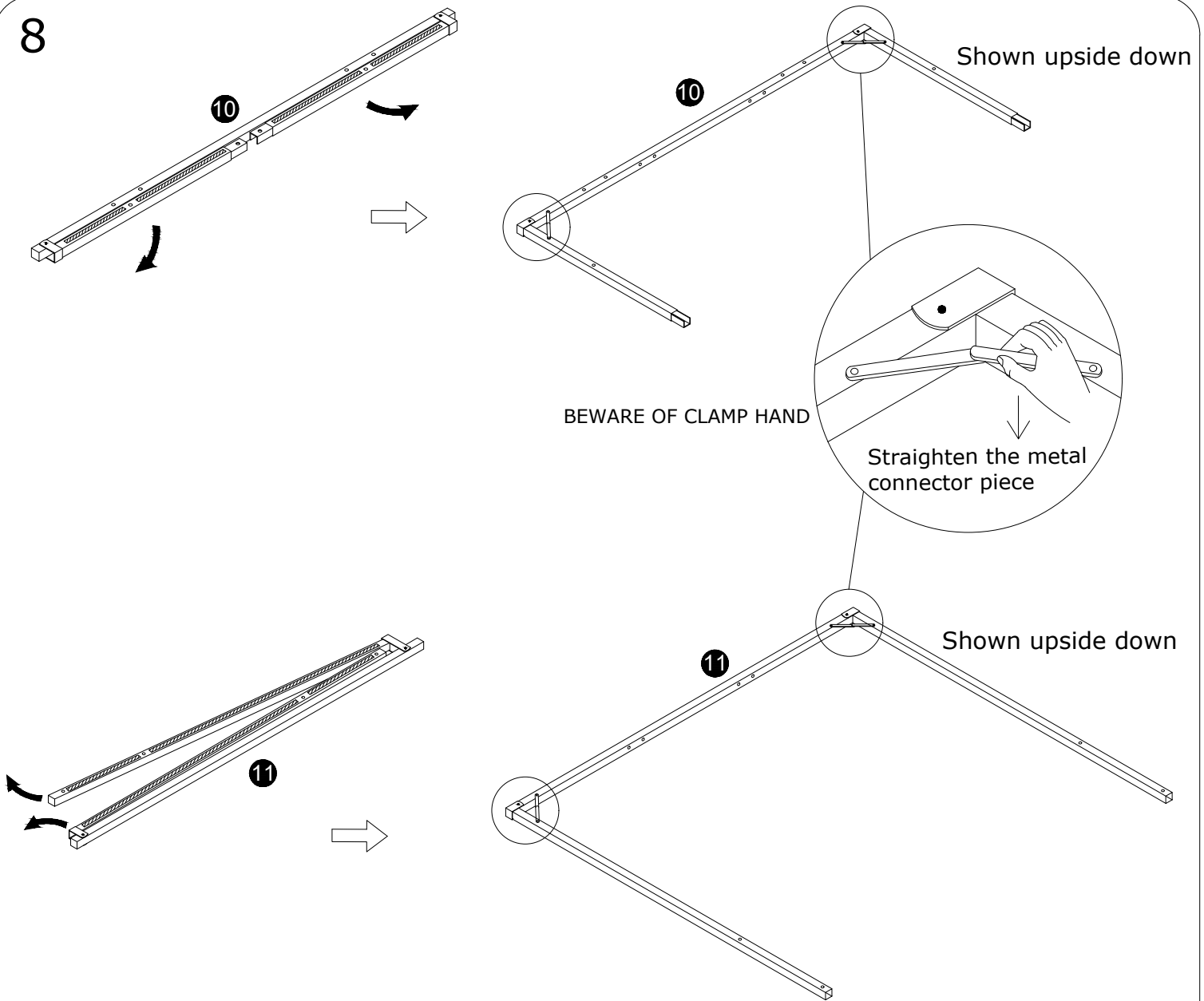
6



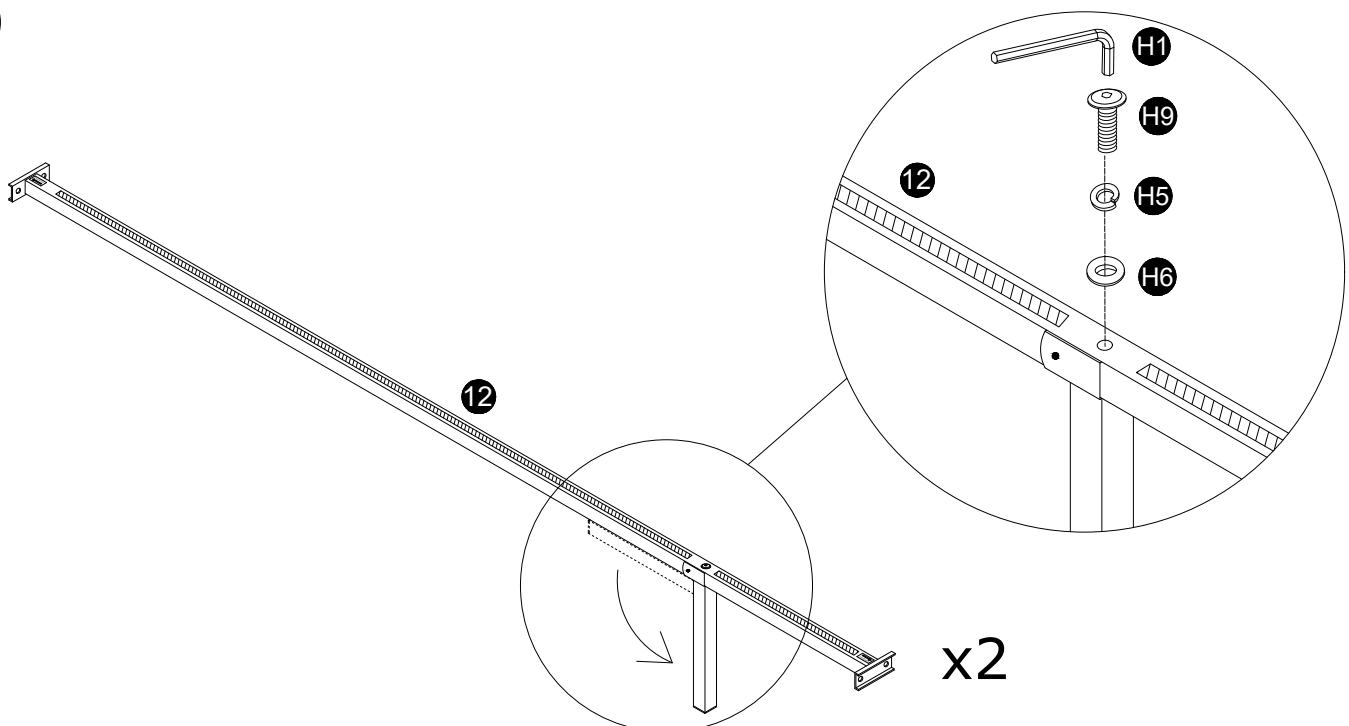
7



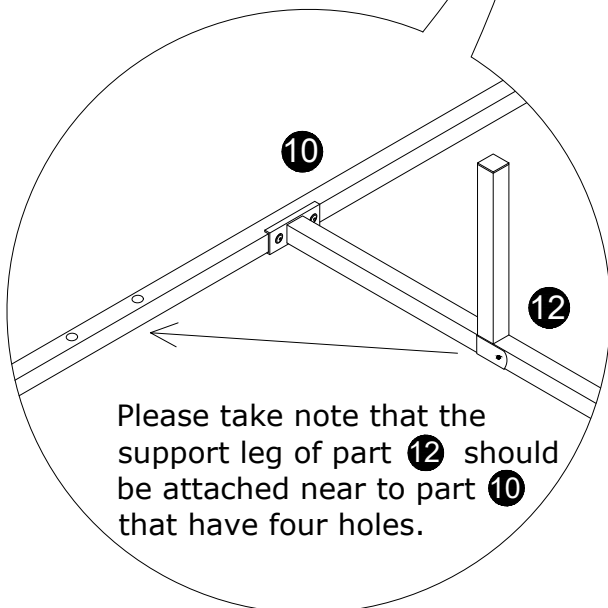
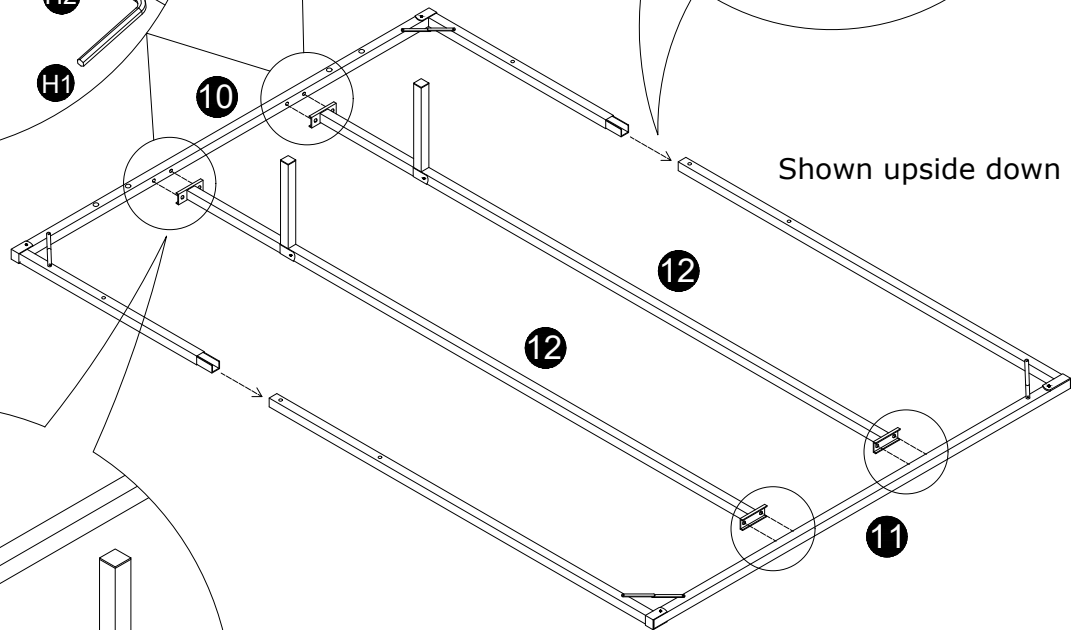
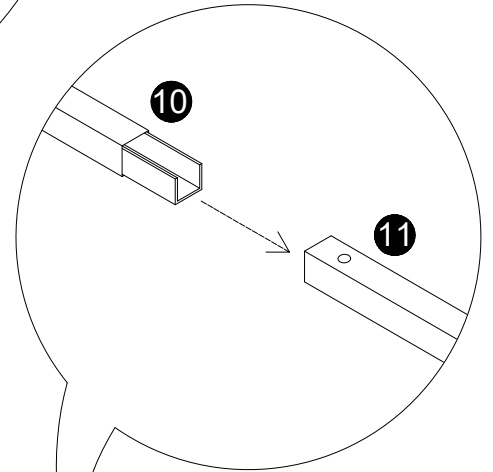
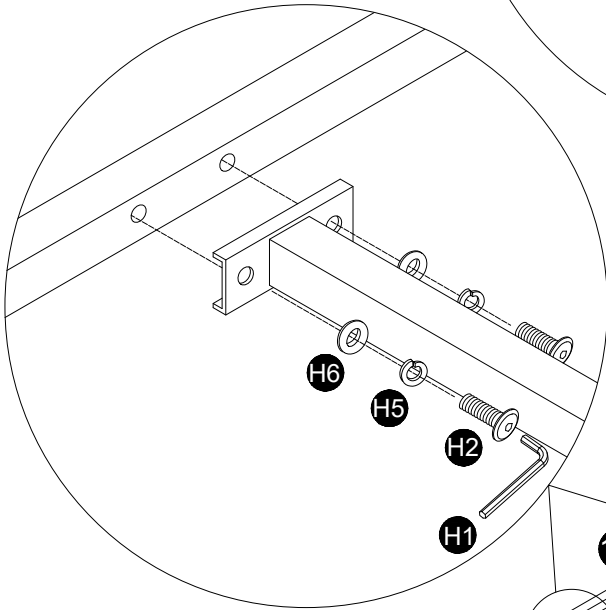
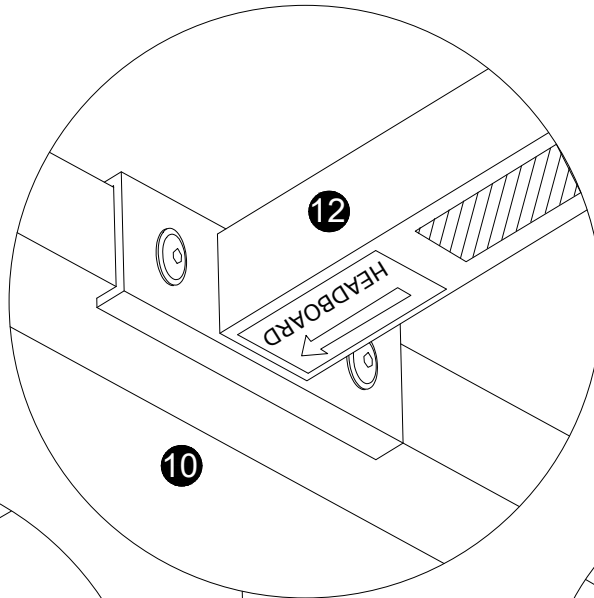
8



9

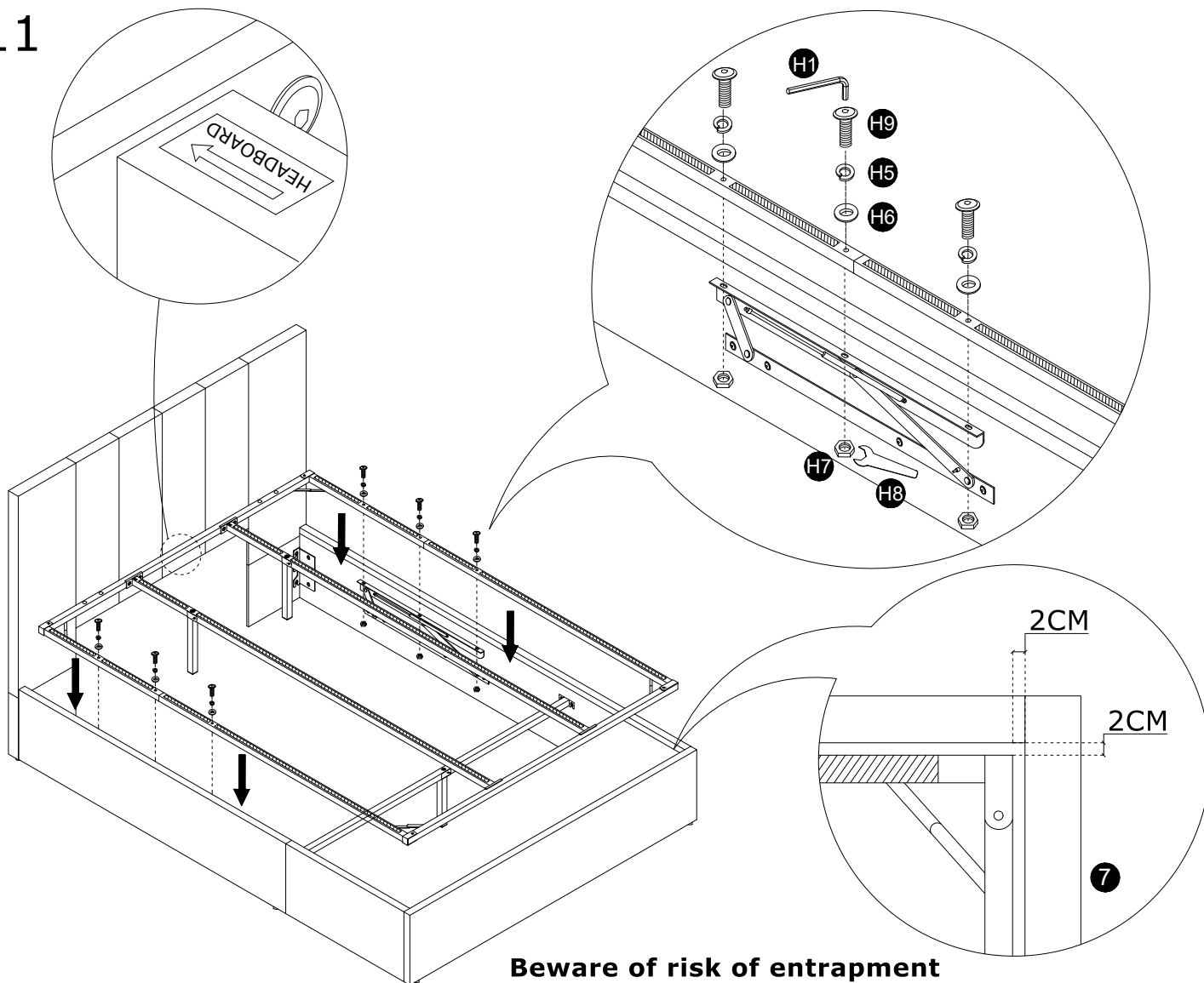


10



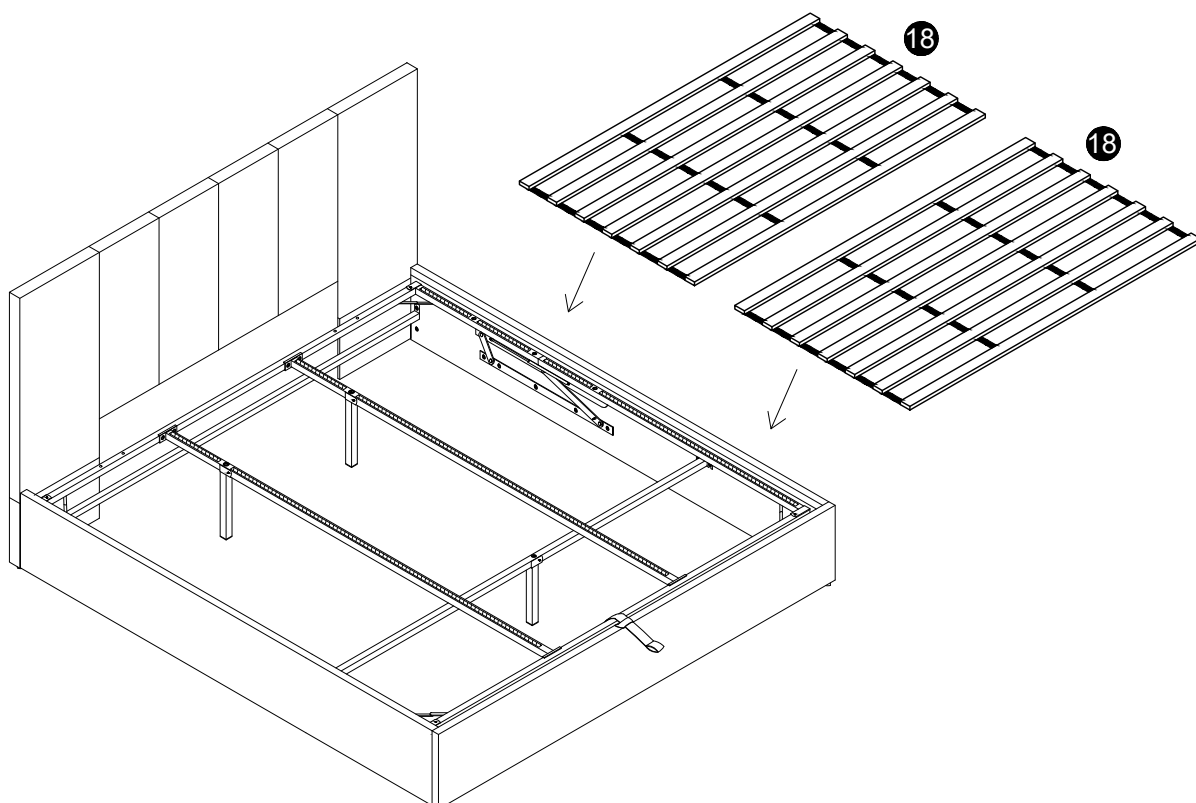
Please take note that the support leg of part 12 should be attached near to part 10 that have four holes.

11

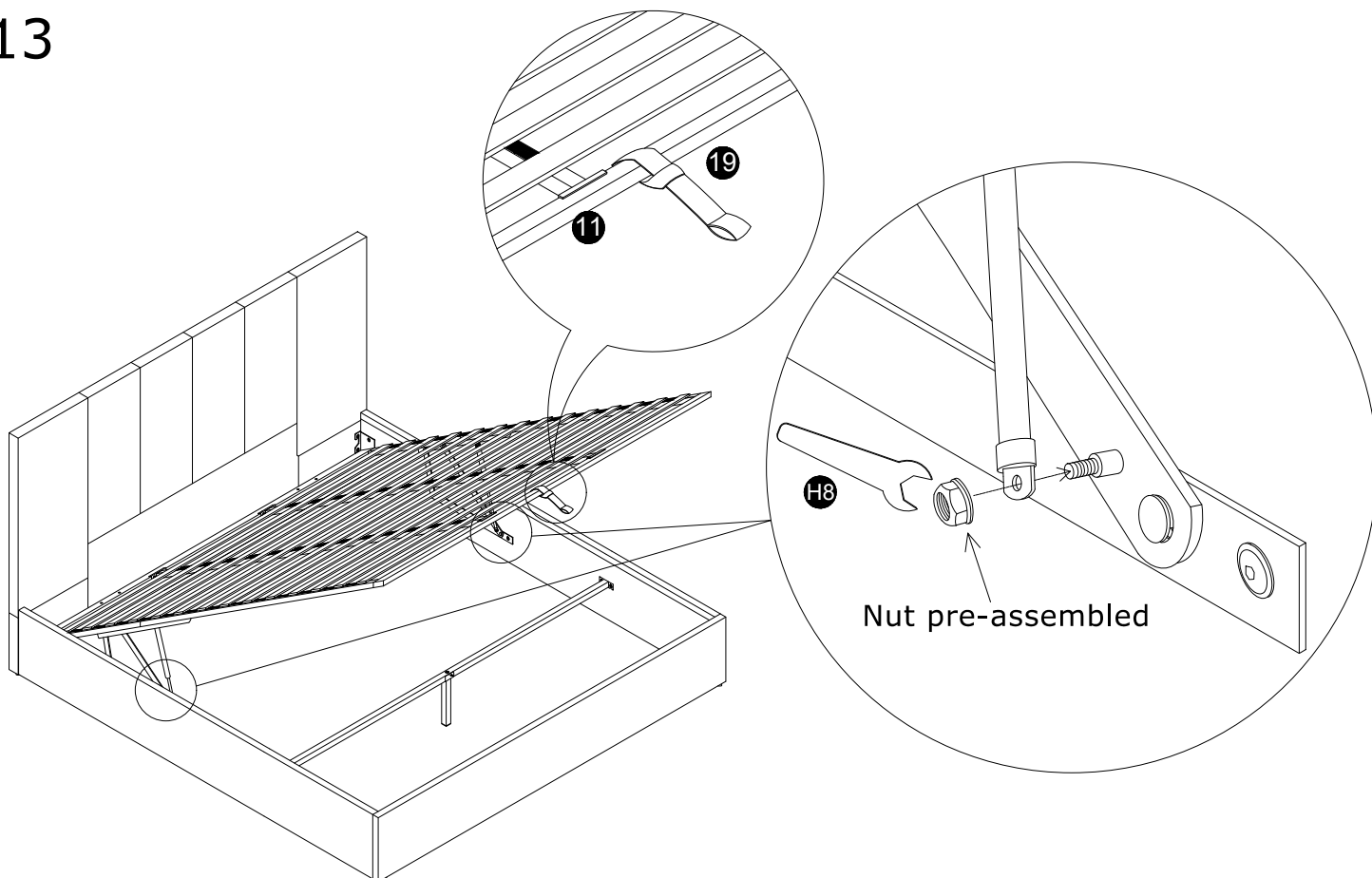


Beware of risk of entrapment from folding hinges!

12

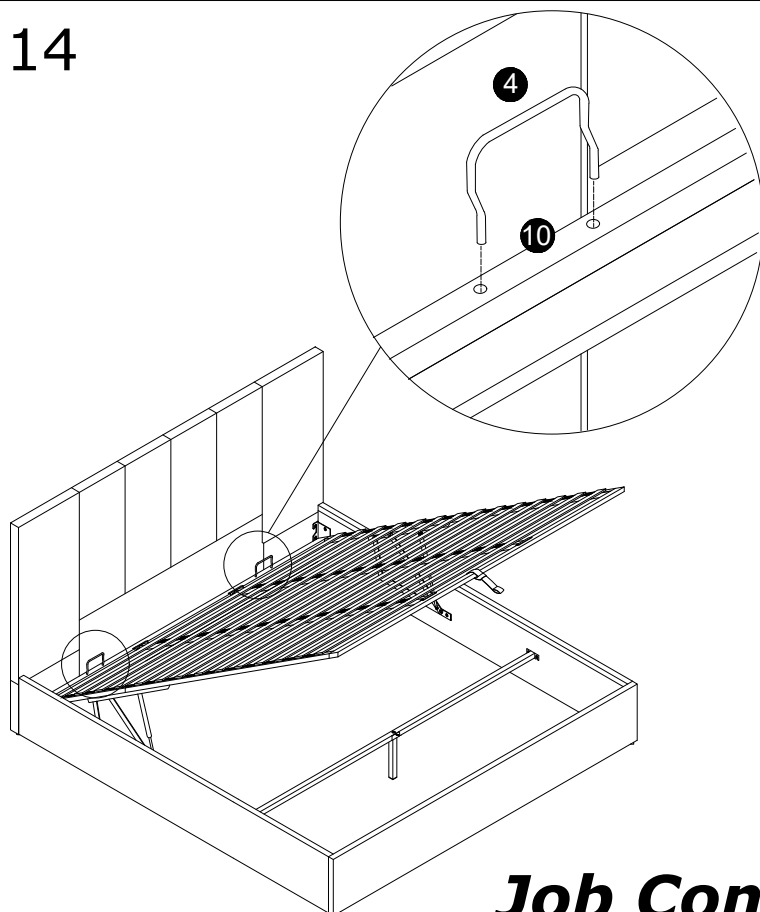


13

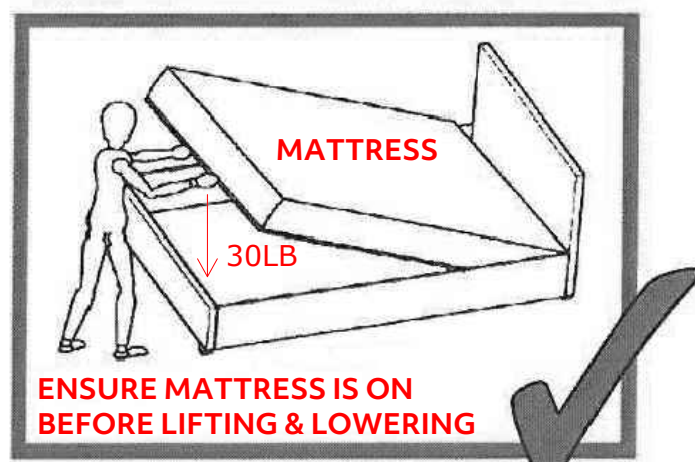


Important: Two people required.
Frame to be fully supported at all times!

14



After placing the mattress on frame,
push down the frame with 30lbs force.



Job Complete !

In the interest of our environment please dispose of all packaging thoughtfully.