

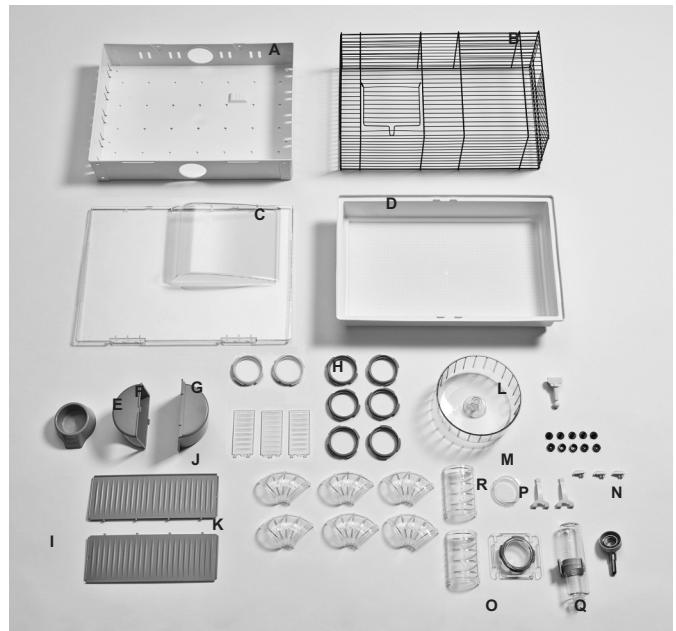
IMPORTANT INFORMATION

Unwrap and remove all parts from the box. Keep the box and packing material until the product is assembled. In case of return or exchange, failure to return product in similar condition as received could result in limited reimbursement. Please save sales receipt as proof of purchase for warranty purposes. Check to ensure you have all the parts below. If you discover any parts are missing, immediately call our toll-free service helpline.

This cage comes with several spare parts. While they might not be used during the initial assembly, you should keep these parts in case they are needed in the future. Your cage is also expandable, with the option to attach tubes and other accessories (sold separately) or to connect to another hamster home. **PLEASE KEEP THE WHITE AND BLUE RINGS FOR FUTURE USE.** Their application and usage is explained in detail in Step 12.

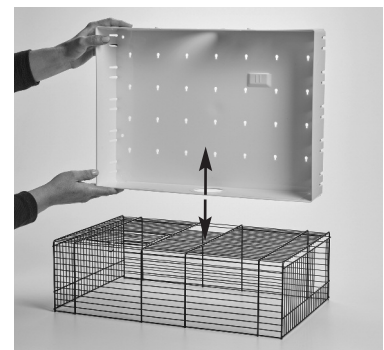
PARTS IDENTIFICATION

- A - Vertical Playspace
- B - Wire Top
- C - Playspace Cover
- D - Plastic Bottom
- E - Food Bowl
- F - Circular Cubby - 2 pieces
- G - White Rings - 2
- H - Blue Rings - 6
- I - Platforms - 2
- J - Ramps - 3
- K - Tube - 8 pieces
- L - Exercise Wheel - 3 pieces
- M - Plastic Pegs and Nuts - 5 each
- N - Locking Hinges - 3
- O - Tube Adapter with Cap & Blue Ring
- P - Clips - 2
- Q - Water Bottle - 3 pieces
- R - Clear Cap



ASSEMBLY INSTRUCTIONS

1. Place the Vertical Playspace on the Wire Top, aligning the holes as shown.



2. Secure the Vertical Playspace with a Plastic Peg and Nut. The first Peg should be go through the hole in the Playspace, then between the wires, in the seventh wire space from the back corner. From the wire side, attach the Nut to the Peg until it clicks. Use three more Plastic Pegs and Nuts to finish securing the Playspace to the Wire Top.



3. Assemble the Tube. Connect the various halves of the clear plastic tube and secure them together with five BLUE rings as shown. Connect the assembled tube to the underside of the wire top. This will allow your pet access from the main area to the Vertical Playspace.



4. Place the Wire Top and Playspace on the Plastic Bottom.



5. Attach a Clip to the horizontal wire on each side of the home. Use the clip to secure the Wire Top to the Plastic Bottom.



6. Using a BLUE Ring and the Clear Cap, cover the hole on the top of the Vertical Playspace.



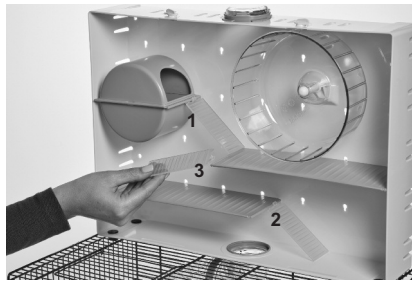
7. Install the Exercise Wheel. Remove the Pin from the Plastic Arm, and place the Arm in the designated slot on the Vertical Playspace. Place the Wheel over the arm. Replace the Pin in the Arm to secure the Wheel in place.



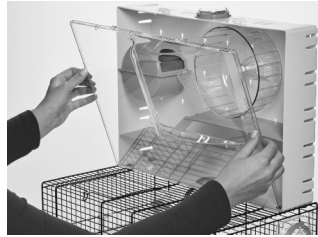
8. Connect the two halves of the Circular Cubby. Make sure the hole is facing right and the pegs to hang the Cubby are in the back. Hang the Cubby on the Playspace on the far left, two rows down.



9. Insert and secure the two Platforms in the Playspace as shown. Then, connect the three ramps to the Platforms and the Circular Cubby to provide access to each level.



10. Insert a Locking Hinge in each of the two holes on top of the Vertical Playspace. Attach the Play-space Cover, making sure it hinges on the bottom. The "bubble" in the cover goes in front of the Exercise Wheel. Secure the cover in place by rotating the two Locking Hinges. Always make sure the Cover is LOCKED and SECURE when the home is in use.



11. Attach the Water Bottle in the desired location. The nozzle will fit through the wires and into the home. It is a tight fit to prevent shifting and moving while your pet takes a drink.



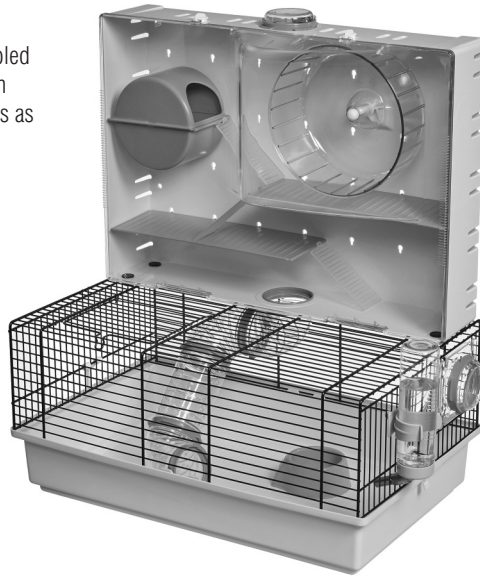
12. Your cage is expandable, with the option to attach tubes and other accessories (sold separately) or to connect to another hamster home. When additional accessories are not in use, cover the hole in the side of your hamster home with the Tube Adapter, one BLUE RING, and a Cap. The Cap can only be secured with a BLUE ring; it is important to keep all rings for future use.

The WHITE rings allow you to attach tubes to the home for additional recreation and play space. The WHITE rings fit accessory tubes commonly available through retailers in the United States. The BLUE rings fit accessory tubes commonly available through international retailers.

PLEASE KEEP THE WHITE AND BLUE RINGS FOR FUTURE USE.



13. Your cage is now fully assembled and ready for use. Furnish with bedding, toys, and accessories as desired.



To clean your Hamster Home, wipe with a damp cloth and mild, pet-safe cleaner. Allow to air dry. Do not expose to direct sunlight for extended periods of time.

LIMITED MANUFACTURER'S WARRANTY

1. For one (1) year from the date of original purchase, we warrant to the purchaser of this pet home that, should it prove defective by reason of improper workmanship and/or material, we will repair or replace, at its option, any defective part of the pet home, without charge for the part or for shipping. Replacement parts are warranted for the remainder of the original period.
2. **THIS WARRANTY DOES NOT COVER** defects in the home caused by any animal, any physical abuse to or misuse of the pet home, any damage caused by the original purchaser or any third party, or any defects arising or discovered more than one (1) year from the original retail purchase date.
3. **ANY EXPRESS WARRANTY NOT PROVIDED IN THIS WARRANTY DOCUMENT, AND ANY REMEDY FOR BREACH OF CONTRACT THAT, BUT FOR THIS PROVISION, MIGHT ARISE BY IMPLICATION OR OPERATION OF LAW, IS HEREBY EXCLUDED AND DISCLAIMED. THE IMPLIED WARRANTIES OF MERCHANTABILITY AND OF FITNESS FOR ANY PARTICULAR PURPOSE ARE EXPRESSLY LIMITED TO A TERM OF ONE (1) YEAR. SOME STATES DO NOT ALLOW LIMITATIONS ON HOW LONG AN IMPLIED WARRANTY LASTS, SO THE ABOVE LIMITATIONS MAY NOT APPLY TO YOU.**
4. **UNDER NO CIRCUMSTANCES SHALL WE BE LIABLE TO PURCHASER OR ANY OTHER PERSON FOR ANY SPECIAL, INCIDENTAL OR CONSEQUENTIAL DAMAGES, WHETHER ARISING OUT OF BREACH OF WARRANTY, BREACH OF CONTRACT OR OTHERWISE, SOME STATES DO NOT ALLOW THE EXCLUSION OR LIMITATIONS OF INCIDENTAL OR CONSEQUENTIAL DAMAGES, SO THE ABOVE LIMITATIONS OR EXCLUSION MAY NOT APPLY TO YOU.**
5. This warranty gives you specific legal rights, and you may also have other rights which vary from state to state.