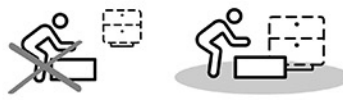


## PRE ASSEMBLY INTRODUCTION

We understand building ready-to-assemble furniture can be a challenging experience for some. To help avoid confusion, we have provided some helpful tips that may speed up the process.



**Teamwork**  
ALWAYS have at least two people to help with transporting and assembling the product to avoid potential injury and/or damage.



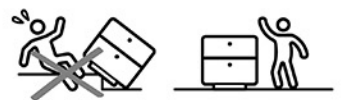
**Suitable Location**  
Assembling near the area of the intended location is highly recommended.



**Sufficient Space**  
Make sure you have enough space to move around during the assembly.



**Avoid Scratches**  
Use cardboard, blankets or a carpeted area while assembling furniture to prevent scratches.



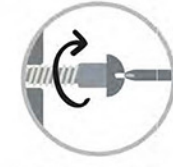
**Flat Surface**  
Make sure the furniture rests on a flat and level surface with each leg evenly touching the floor.

## ASSEMBLY AND CARE ADVICE

**FAILURE TO FOLLOW THE GUIDELINES BELOW MAY RESULT IN INJURY AND/OR PROPERTY DAMAGE.**



Position each part correctly and insert screws or bolts into their respective holes.



Turn clockwise to tighten and only tighten when step is completed or when instructed to do so.

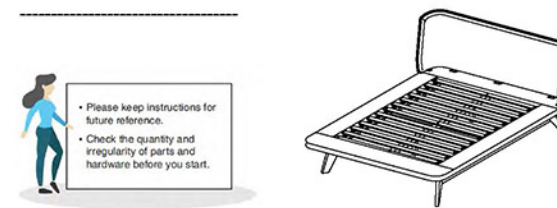


Use the appropriate hand tools or power tools for assembly. Select steps, such as tightening screws and/or bolts, may require hand tools to avoid causing damage during assembly.

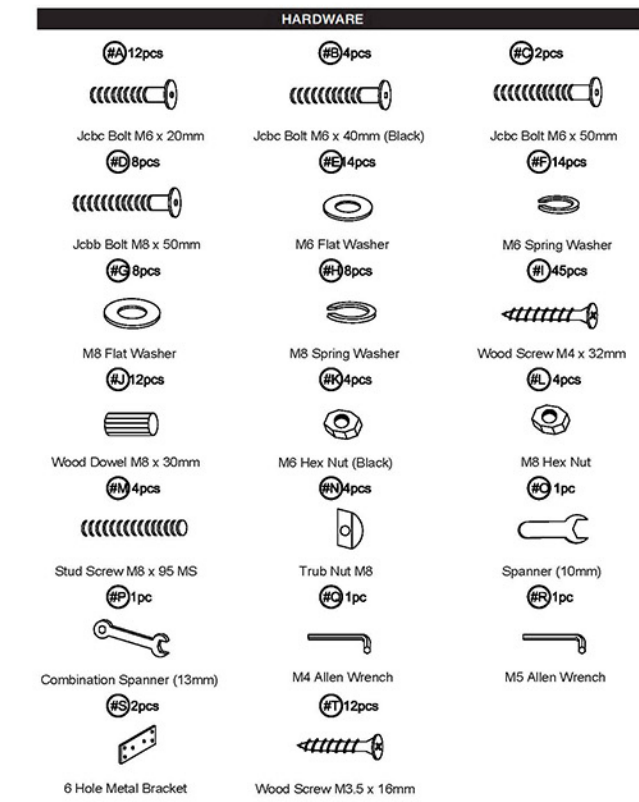
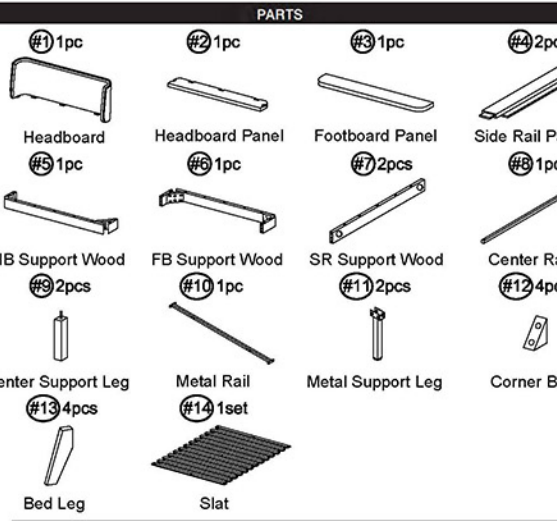


After two weeks, check and tighten any loose hardware and repeat again every six months thereafter.

IT IS THE USER'S RESPONSIBILITY TO MAINTAIN THE FURNITURE. THE HARDWARE MAY LOOSEN OVER TIME AND MAY CAUSE THE FURNITURE TO BE UNABLE TO SUPPORT ITS INTENDED WEIGHT CAPACITY. THIS MAY LEAD TO COLLAPSE AND MAY CAUSE SERIOUS INJURY.



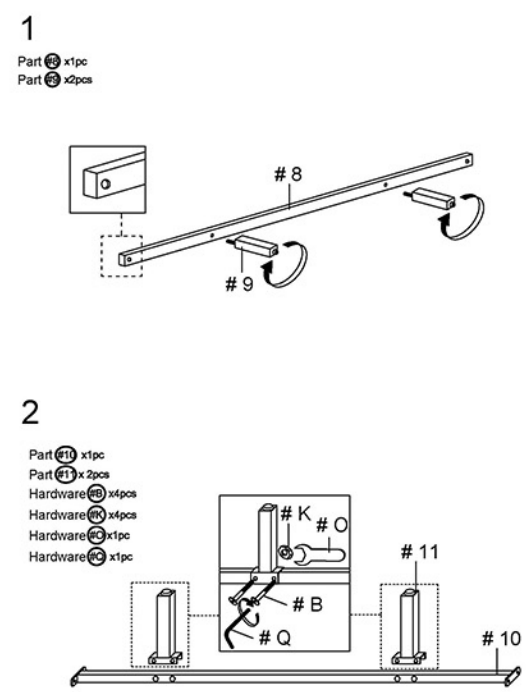
Please keep instructions for future reference.  
Check the quantity and irregularity of parts and hardware before you start.



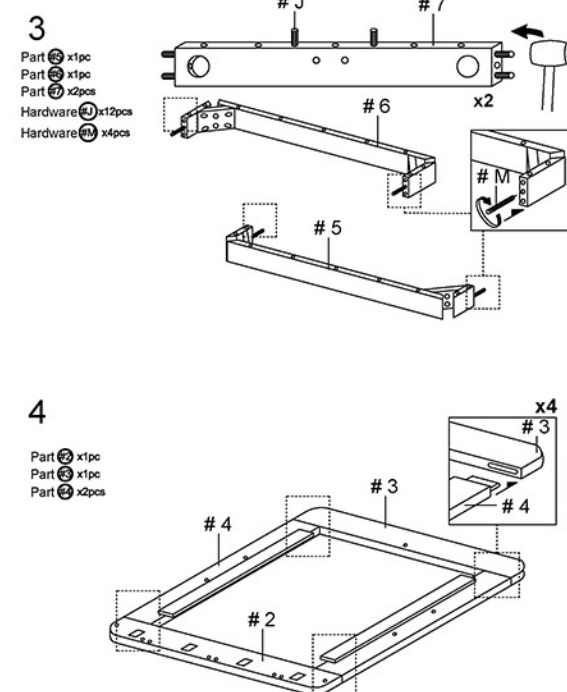
## FM7223WNQ POINT 3 CARTONS

Carton	Designation	Part
	Headboard (3pc)	#1
	Headboard Panel (1pc)	#2
	Footboard Panel (1pc)	#3
	Side Rail Panel (2pc)	#4
	SR Support Wood (2pc)	#7
	Center Rail (1pc)	#8
	Center Support Leg (2pc)	#9
	Metal Support Leg (2pc)	#11
	HB Support Wood (1pc)	#5
	FB Support Wood (1pc)	#6
	Metal Rail (1pc)	#10
	Corner Block (1pc)	#12
	Bed Leg (4pc)	#13
	Bed Slat (1set)	#14

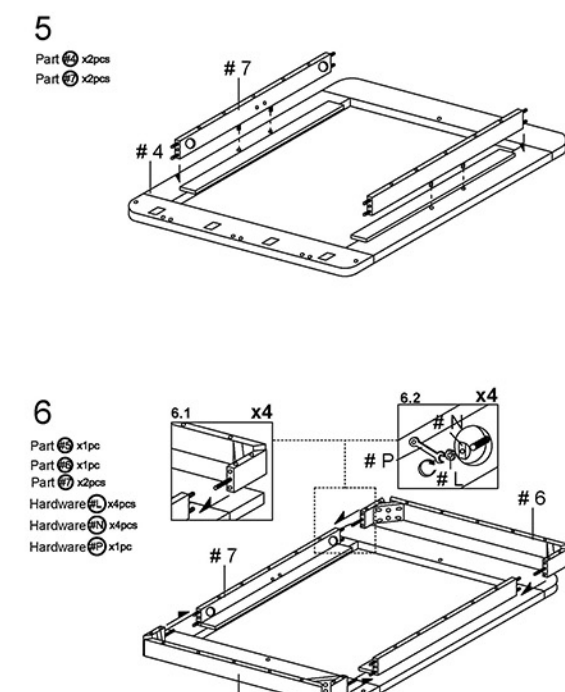
## ASSEMBLY INSTRUCTIONS



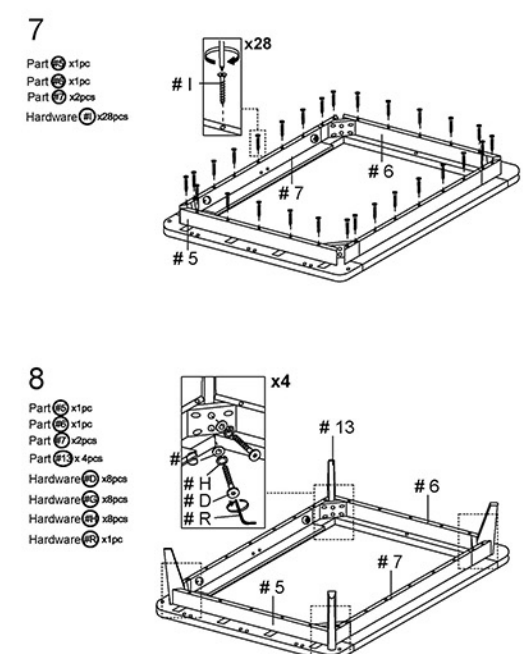
## ASSEMBLY INSTRUCTIONS



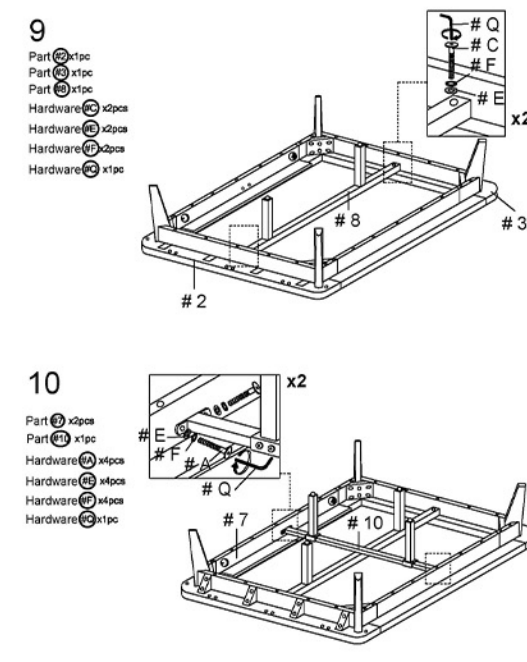
## ASSEMBLY INSTRUCTIONS



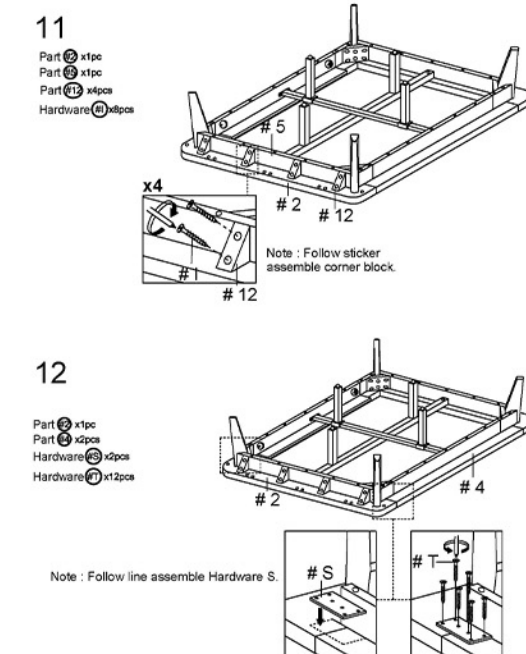
## ASSEMBLY INSTRUCTIONS



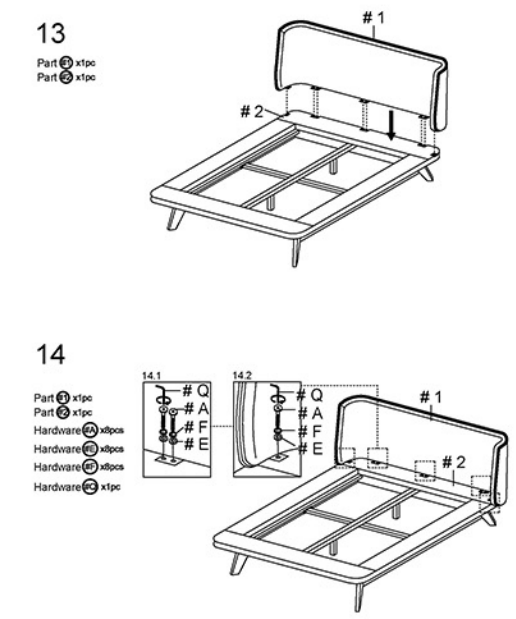
## ASSEMBLY INSTRUCTIONS



## ASSEMBLY INSTRUCTIONS



## ASSEMBLY INSTRUCTIONS



## ASSEMBLY INSTRUCTIONS

