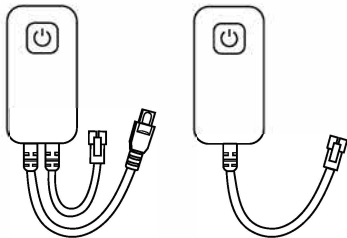


USER INSTRUCTION

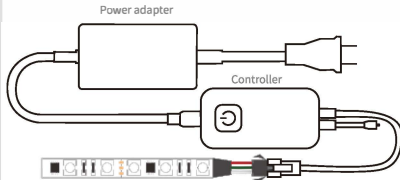


I .Product Parameter:

Category	LED Controller
Domination Principle	BLUETOOTH 4.0
Operation Platform	Android 7.0/IOS 12.0 or later
Input Voltage	DC5V/DC(12-24)V
Supported Driver IC	SPI:TM-1803,1804,1809,1812,1829,1903,1904,1912; UCS-1903,1903B,1909,2903,2909,2912,1912 P9813,6803 Ws2811,2812B,2801,2803; SM-16711,16716,16726
Signal Output	Support one-wire driver IC, able to control up to 2048 pixels
Working Temperature	-20~+60°C
Control Distance	Visible distance 30M
Certification	CE, RoHS

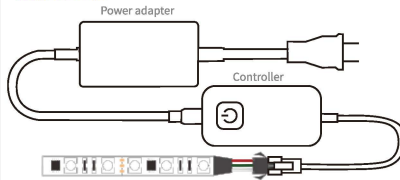
II .Wire Connection

DC5V/DC(12-24)V

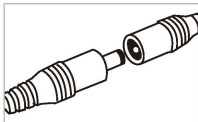


Applicable to the pixel lights with IC models listed in the parameter column.

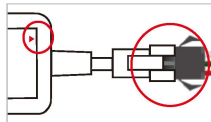
DC5V/DC(12-24)V



Applicable to the pixel lights with IC models listed in the parameter column.



The connection between the controller and the power supply



Controller and device connection

Notice:

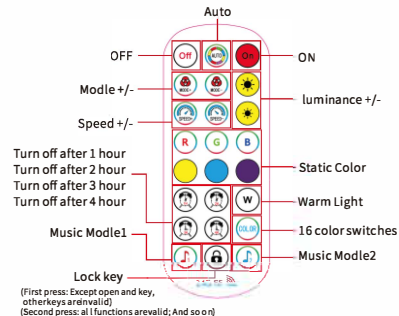
It is necessary to ensure that the red arrow of the controller corresponds to the black arrow of the device end, otherwise the device will have a short circuit.

III. Download APP

Download the APP from App store and Google Play Store.

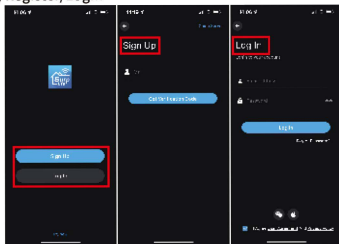
IV. Key Instruction

(This remote controller Configured by customer's requirements)



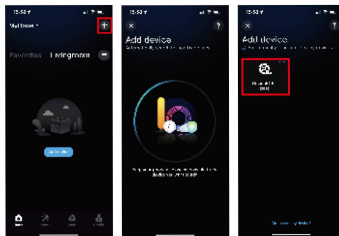
V. How to connect to App?

1) Register/Login

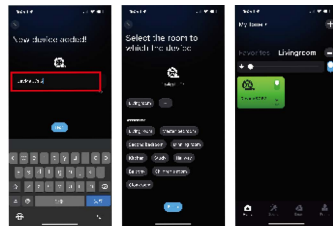


2) Turn on the device and enable your phone's bluetooth.

3) Enter app, tap "add device" or click "+" to add the device.



4) Rename the device and select a room for it.



VI. Frequently Asked Questions

▶ How to setup your Bluetooth light?

. Enable your Bluetooth on your phone.

. Then power on the led strip light.

. Open App, the App can directly connect to the device. It can automatically match the light without other steps, and you can experience the smart light simply and quickly.

▶ How can I do if connecting the Bluetooth device failed?

Please power off the led strip light, then turn it on again, if the problem can't solve, please restart the phone.

