

Assembly Guide

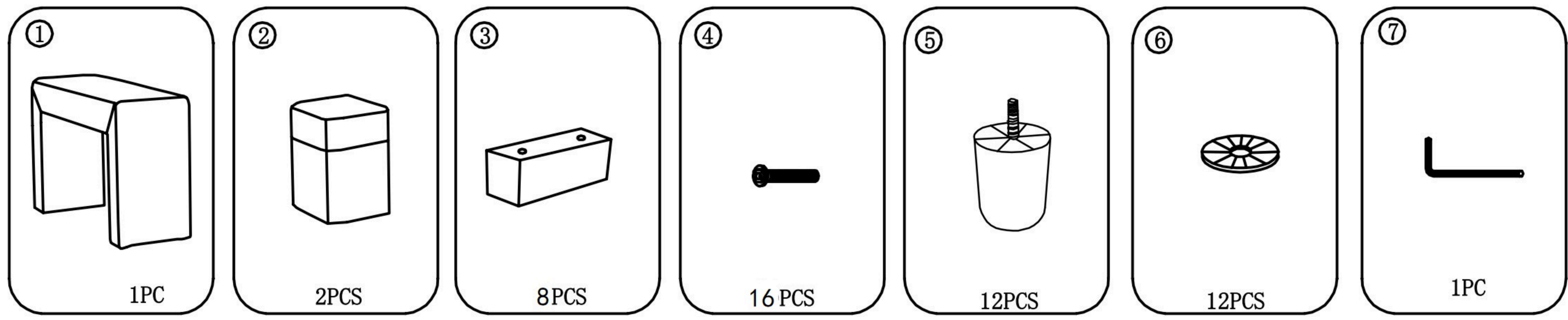
Before You Begin:

- ✓ Please take a moment to read through this leaflet and follow the simple step-by-step guide.
- ✓ Carefully check that you have all parts before starting assembly.
- ✓ Keep fixtures & fittings out of children's reach and ensure children stay away from the construction area.
- ✓ Retain these instructions for future reference. Most of the time, you will find the parts stored underside the sofa. Please turn the sofa upside down to locate the Zig or Velcro.
- ✓ In the unlikely event of an issue with your product, please provide the PO number, item code, and part number.
- ✓ Do not discard the packaging until the contents have been fully assembled.
- ✓ Exercise caution when moving the furniture and avoid dragging the sofa, as this may damage both the furniture and the flooring.
- ✓ New product odors are perfectly normal and a natural part of the manufacturing process. Allow some time for your new piece of furniture to settle, and the odor will disappear naturally.
- ✓ The lighting, size, and existing décor of a room may cause the product color to appear different from the website images.

If you have any questions, please contact our customer service team for help.

Assembly Instructions

PARTS LIST:



LOVESEAT

CHAISE

