

# User ' s Manual



## Why us?

1. We've used the professional technology from produced our fan with high efficient, quiet, durable and energy saving motor, and ensure our motors can be guaranteed for 10 years.
2. With the personalized and unique structural design, our fans owned the classic and fashion appearance. We also designed our fans with imported zinc, alloy housings and plywood blade to ensure the high quality.

## Warning

1. The input wattage for this fan should be 110V/60HZ.
2. Electrical installation should be performed by a qualified licensed electrician.
3. To reduce the risk of electric shock, ensure electricity has been turned off before assembling or disassembling. The assembling wire order must be Ground wire, hot (supply) wire/neutral wire, and the disassembling wire order should be neutral wire/ hot (supply) wire, ground wire.
4. Make sure all assembled screws were tight during the assembling.
5. To reduce the risk of injury, do not touch the blade when the fan is running.

## Tools required for installation



electrical tape



14 wrench



slotted screwdriver



Phillips screwdriver



Herringbone ladder



tape pliers

# Reading before installation

## 1. Fan will not start

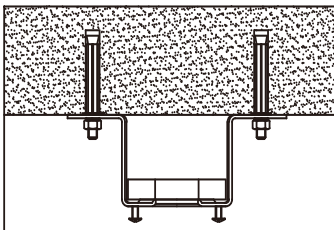
- (1). Check the wire connections to the fan, ensure they are all correct.
- (2). Check and ensure the input wattage is correct to be 110V/60HZ.

## 2. Than fan sounds noisy

- (1). Make sure all assembled screws are tight.
- (2). Make sure wire nut connections are not rubbing against each other or the interior wall of the switch housing.

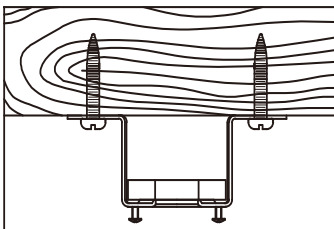
## Mounting bracket installation

(Fig.2)



(1). Concrete ceiling: Drill two holes with an appropriate depth by a drilling bit with dia. At 8mm, and insert two pieces expansion screws in the holes, then fix the hanger bracket into the expanding screws with the wood screws and tighten it by the nuts of the expansion screws.(Fig.2)

(Fig.3)



(2). Wood ceiling: Fix the mounting bracket to the wood ceiling with (thickness at 7cm at least) by 4 wood screws. (Fig.3)

## Installation procedure and description

### 1 List of Parts



Screw fitting kit

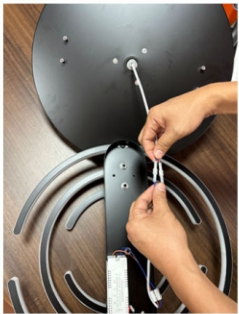


Mounting bracket Remote control connector Rubber ring



Hanging bell Horn cover 100mm boom 200mm boom

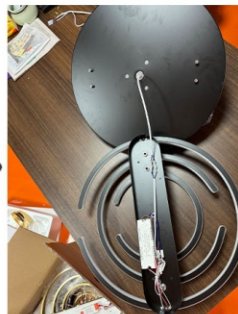
## 2. Installation procedure



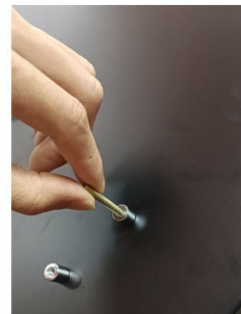
Step 1. Main body and luminaire connection



Step 2. Blue to blue line, brown to brown line insert connection



Step 3. docked picture



Step 4. Main chassis Twist four teeth bars



Step 5. Through four The screw button nut will Main body and luminaire installation



Step 6. Put the horn cover in the rubber ring



Step 7. Put on the bell And horn cover



Step 8. Run all the wires through the boom



Step 9: The hole on the boom matches the hole on the main body, and the pin is fixed with the R pin on the other side through the hole



Step 10. Button screw



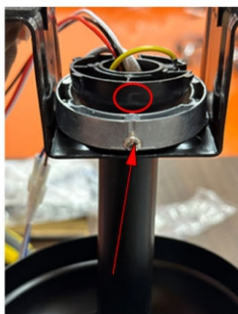
Step 11. Corresponds to the cable pair slot



Step 12. Install the support Place the boom with the sling in the mounting support



Step 13. The positioning slot on the mounting bracket of the rotary hanger has fallen into the positioning slot on the hanging ball



Step 14. Circle with arrow screws flat, button screws firmly fixed seat



Step 15. Connect the controller to your home line



Step 16. Place the connector in the mounting bracket to secure it



Step 17. Install the bell and horn cover, align the hole and rotate the bell to clamp firmly



Step 18. Button screw complete