

Instruction Manual

CLASSIC THREE-TIERED FOUNTAIN





Having Trouble?

Purchased your product online?

We would really appreciate it if you can share your experience with others by reviewing our product on the website from which you purchased.



Purchased your product online?

We would really appreciate it if you can share your experience with others by reviewing our product on the website from which you purchased.



Contents

Contents	2
What is included	3
Assembly instructions	4
YouTube video instruction	5
Warranty	6

What is included



A. Pedestal Base



B. Middle Pedestal



C. Top Pedestal



D. Tier 3 Bowl



E. Tier 2 Bowl



F. Tier 1 Bowl



G. Top

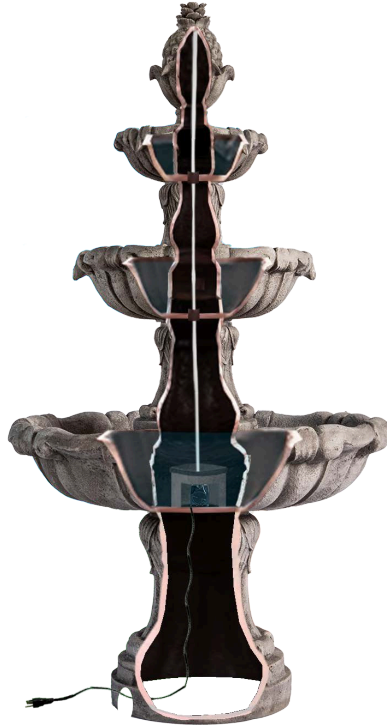
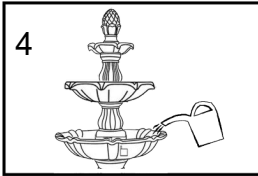
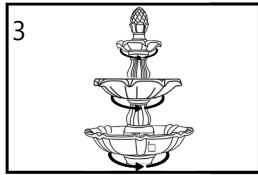
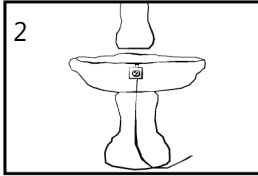
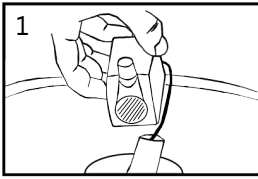


H. Pump House Door



I. Pump

Assembly instructions



1. Place the pump into the tier 3 bowl and place it the power cord through the hole.
 2. Place the cord through the pedestal base and then lock the tier 3 bowl. Lock the middle pedestal.
 3. Thread the hose and lock the top to the tier 1 bowl, thread the hose through the top pedestal and lock to the tier 1 bowl. Thread the hose through the tier 2 bowl and lock to the top pedestal.
 4. Connect the hose to the pump and lock the tier 2 bowl to the middle pedestal. Place the cover on the middle pedestal. Fill with water and connect to a power source.
-

Warranty

Limited 1-Year Manufacturer Warranty

Manufacturer warranty covers:

- Parts that are deemed defective within 30 days will be shipped free of charge, within the 48 contiguous states.
- Any warranty claim after 30 days, will require shipping to be paid by the customer.

Any visible damage due to the neglect, misuse, or abuse will void the limited warranty of the product.

For further information, please contact us.