

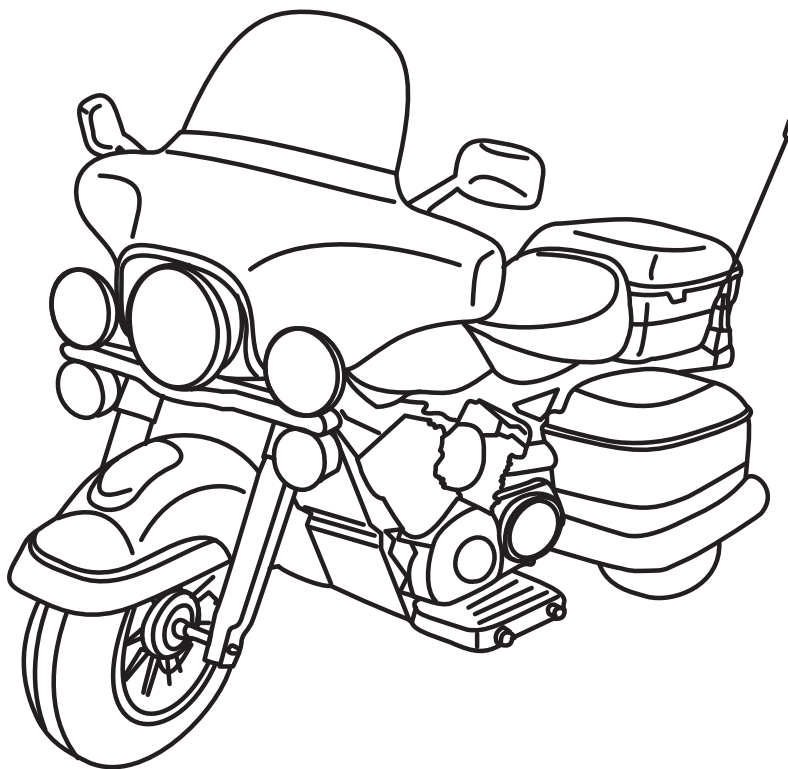
MODEL NO.

0950 0957
0951 0958
0952 0959
0953 0960
0954 0961
0955 0962
0956 0963
(0950-0963)

AGES 5+

PATROL H.POLICE

Please read entire manual before starting assembly and keep this manual along with your purchase receipt for reference.



Max. Loading Weight : 88lbs.(40 kgs.)



©National Products Ltd.
Room 413-415,
Houston Centre,
63 Mody Road,
Tsimsha Tsui East,
Kowloon, HongKong.
WWW.NPL2.COM
INFO@NPL2.COM



WARNING:

CHOKING HAZARD -Small parts.
Not for children under 3 yrs.



WARNING:

Toy must be assembled by adult before use.



CAUTION

Screws contain potentially hazardous sharp points or sharp edges. Adult assembly required.

CALL OUR TOLL-FREE 1-877-743-3899

Contents, colors and and decorations may vary form those shown.



National Products Limited



DO NOT RETURN TO STORE

**This product cannot be returned for a refund
after it has been unpacked and used.**

**Call our toll-free 1-877-743-3899
or fax us 1-909-869-5945 or
email us customerservice@funcreation.net
or visit us www.funcreation.net
for assistance and information
from our trained technical staff.**

● COMPONENT PARTS



(1)Front Fork
Kit 1 SET



(2)Front Headlight
Kit 1 SET



(3)Bolt 1pc
(4)Latch 1pc



(5)Front Fender 1pc
(6)Front Fork Cover 2pcs



(7)Front Wheel
Kit 1 SET



(8)Bushing 2PCS



(9) Front Wheel Axle
1PC
(10)Washer 1PC
(11)Nut 1PC



(12)Windshield 1PC
(13)Screw($\phi 4 \times 12L$)
4PCS



(14) Screw($\phi 5 \times 12L$)
4PCS



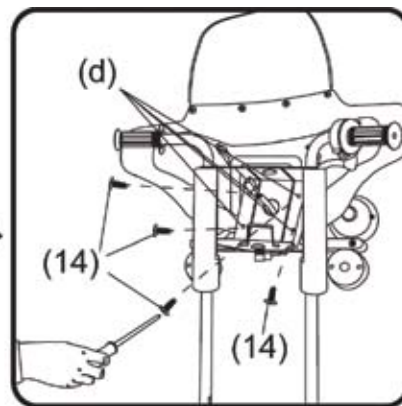
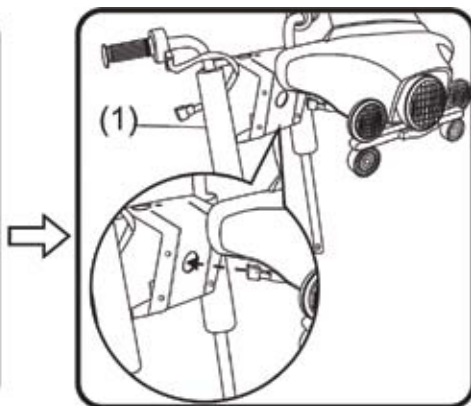
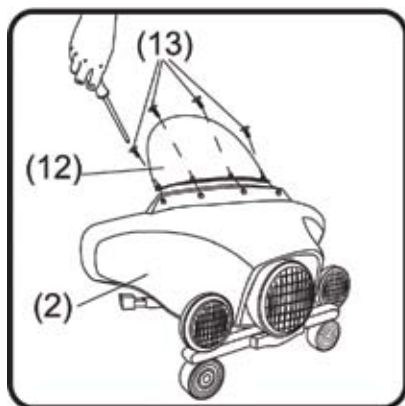
(15)Instrumental Panel
Kit 1 SET
(16)Screw(M3 $\times 8L$)1PC
(17)Screw($\phi 4 \times 12L$)3PCS



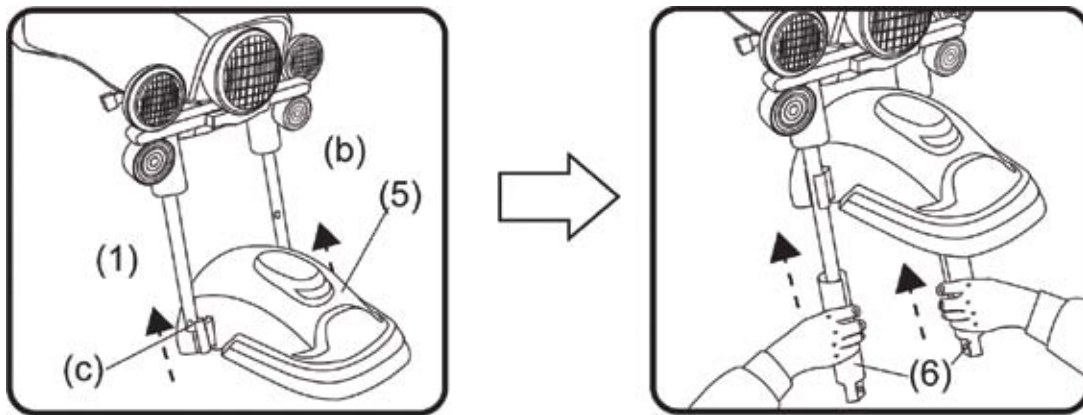
(18)Side Mirror 1SET
(19)Holder 2PCS
(20)Screw($\phi 3 \times 14L$)
4PCS

● DESCRIPTION OF ASSEMBLY PROCEDURES

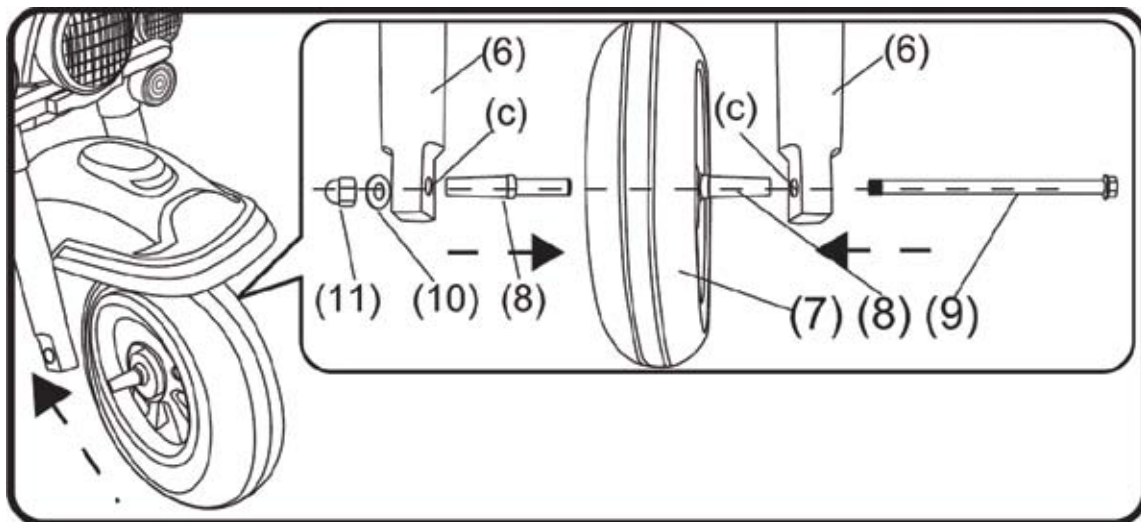
Step 1 :Take the windshield (12)and align the four holes of the headlight kit,
and then fasten it by four screws $\phi 4 \times 12L$. (13)
Take the headlight kit (2) and align the four holes (d) and the front fork
(1) and then fasten it by four screws $\phi 5 \times 12L$ (14).



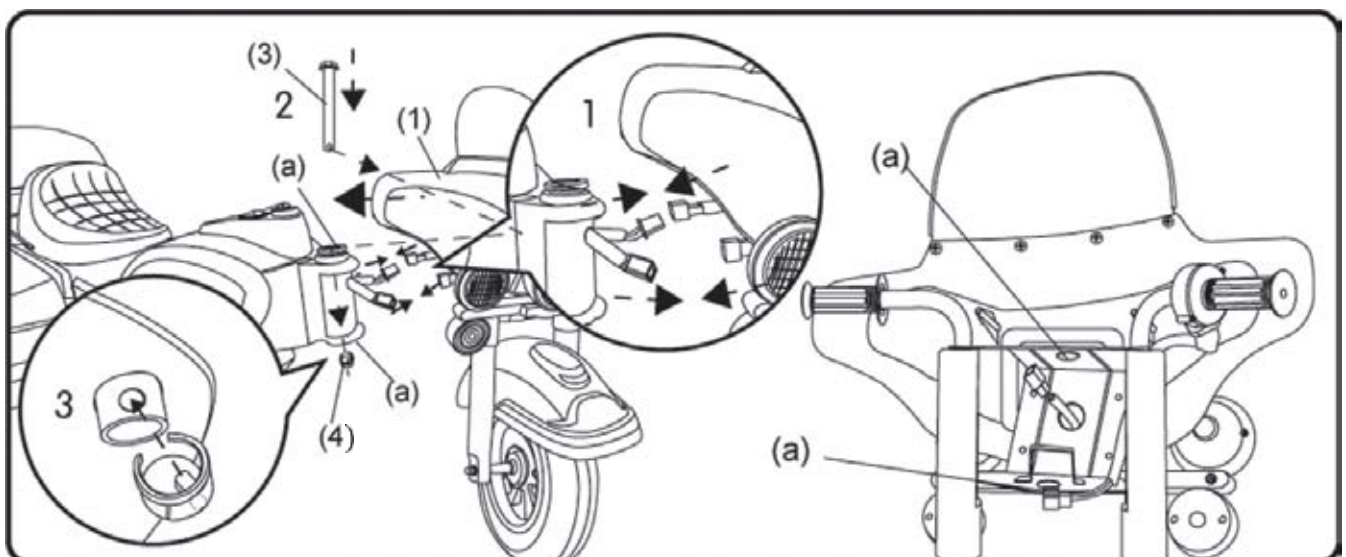
Step 2 : Take the front fender (5) with the bulge heading forward between the two tubes of the front fork kit and push it up along the two tubes to the positioning hole (b) and then take the left and right front fork cover(6)with the opening inside and push them up along the two tubes to the position by aligning the hole (c).



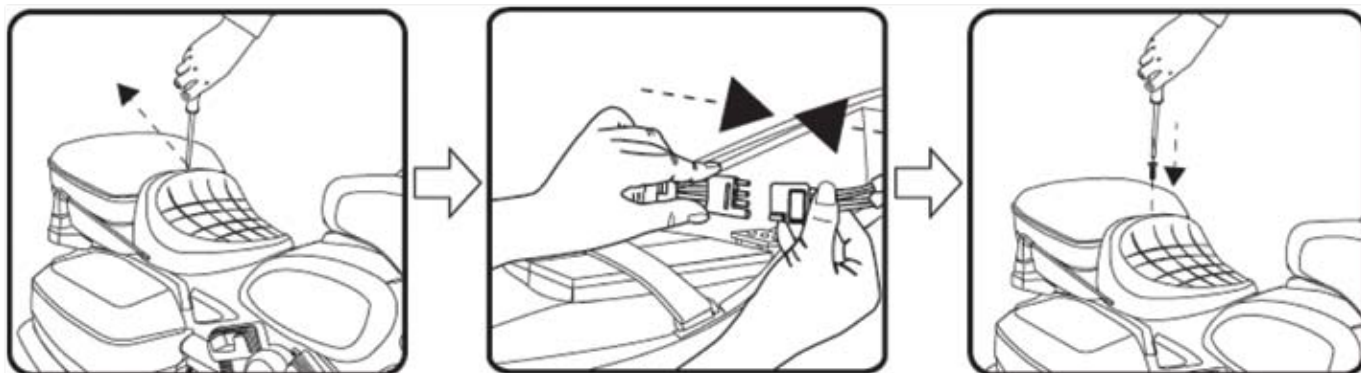
Step3 : Take the front wheel kit (7) and the center holes shall be inserted into both bushes (8) and then placed into (6) by aligning the holes (c) and take the front wheel axle(9) from right to left along the hole through the bush while the other end is added with washer(10)and nut (11) shall be duly tightened.



Step4 : Take the front fork kit (1) and align the holes (a) with the holes (a) for the chassis and insert the bolt (3) into the holes (a) and take latch (4) and place it in position from the side.



● WIRE CONNECTION INFORMATION



● FUNCTIONAL DESCRIPTIONS

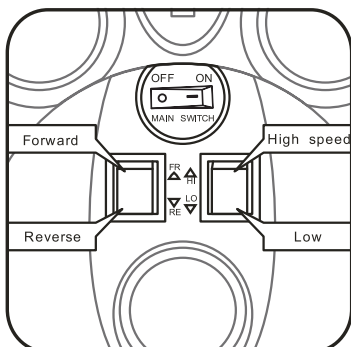


Fig.1 Forward/Reverse
High/Low Speed

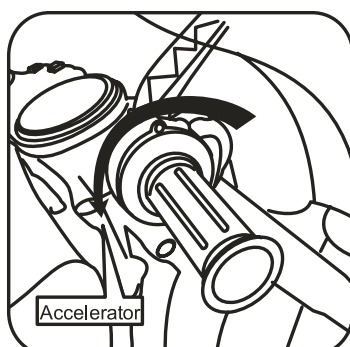


Fig.2 Accelerator

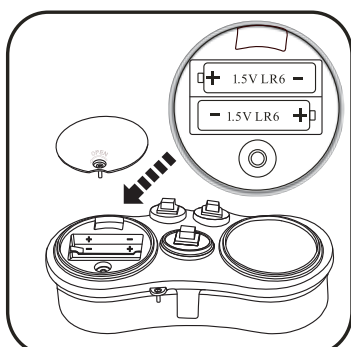


Fig.3 Instrumental Panel Kit

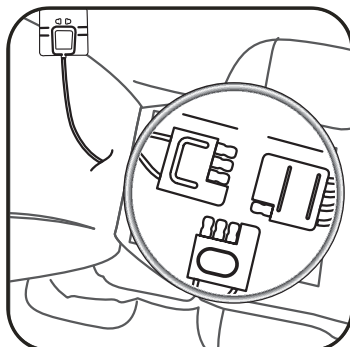
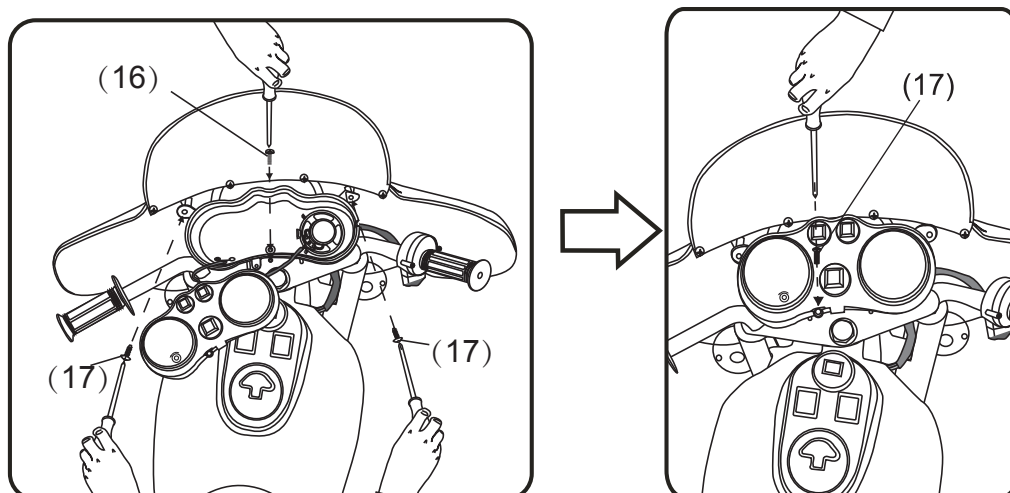


Fig.4 Charging Figure

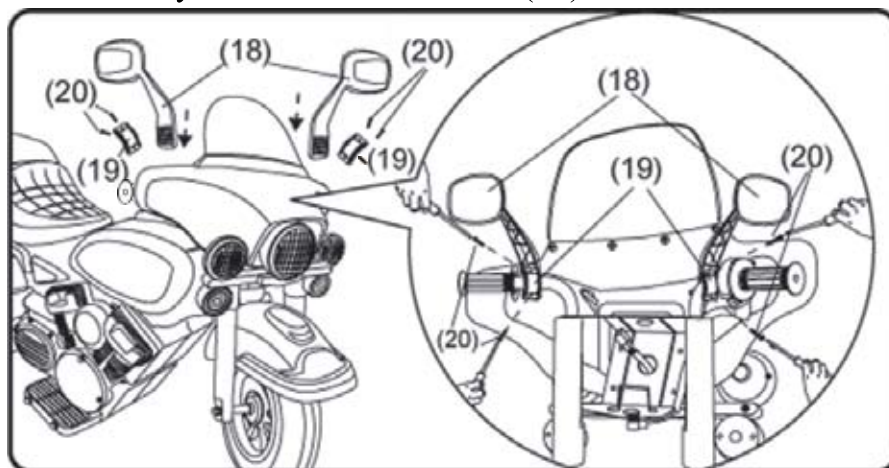
● OPERATION DESCRIPTIONS

1. First connect the battery wiring under the seat accordingly and push the main switch to “ON” position (Fig.1) before starting the motorcycle, the front and rear hazard light will flash when the power on.
※Caution: Please set the main switch on “off” mode before sitting firm on the seat or if it is not in use to prevent risks)
2. Option for forward, reverse, high speed or low speed (Fig.1), for the beginners, option for low speed under guidance of an adult or parent and do not switch to forward, reverse at high speed to protect the transmission lift.
3. When riding, hold the handlebars firmly with both hands and the right hand shall hold slightly the handlebar (Fig.2) and turn it backward, when the motorcycle moves forward the headlight with bright, the handle shall remain the same position and to stop the moto cycle, turn it to the original position and the motorcycle will stop. (Do remember not to ride the motorcycle under high speed when you are not familiar with it.)
4. Open the battery cover, use hex screw driver to open the screw and then insert two “AA”size batteries into batteries compartment . Replace the cover and tighten screw. (Fig.3)
※Do not mix alkaline, standard (carbon-zinc) or rechargeable (Ni-Cd) batteries.
※Do not mix old and new batteries.

Step5: Take the instrument panel(15)open the top and insert the screw M3×8L(16)into the hole (e) and align the hole (e) of the front fork (1) and screw it. The holes (f) on both sides of the instrument panel(15)align with the 2 holes(f) of the front headlight kit(2) and fasten it by two screws $\phi 4 \times 12L$ (17).



Step6 : Take side mirror (18) and fix it with the holder (19) on right and left side of front fork kit (1) and fasten it by two screws $\phi 3 \times 14L$ (20) each side.



● LIMITED WARRANTY

(The warranty and toll free number only apply in the United States and Canada.)

This vehicle is warranted by NPL[®] for ninety days from date of purchase against defects in materials or workmanship. The warranty covers the NPL[®] vehicle which has been used under normal circumstances, solely for the purpose for which it was intended and has been given proper care and maintenance. The warranty does not cover damage by customer, damage which results from normal wear and tear or from alterations made by the customer, or damage caused by use for an unintended purpose. Shipping and handling are not covered by this warranty.

Please keep the original purchase receipt for any warranty claims, and inspect the product upon purchase for any defects or missing parts.

We are here to help -

- For parts order, please visit: www.funcreation.net
- For Customer Service, please email us: customerservice@funcreation.net
- Or call our toll free number: 1-877-743-3899

5. Instrumental panel have three sound effect buttons (Fig.3); press red button is ambulance sound effect, press green button is police car sound effect, and press yellow is fire engine alarm sound effect.(To prevent malfunction in the inner parts, keep away from the moist.)
- ※Caution: Despite the fact that the body of the motorcycle is made of impact resistant plastic; it remains suffer damage by improper use or at high speed heavy impact. (Please do not let your motorcycle be subject to impacts for duration and riding safety.)

● CHARGING PROCEDURES

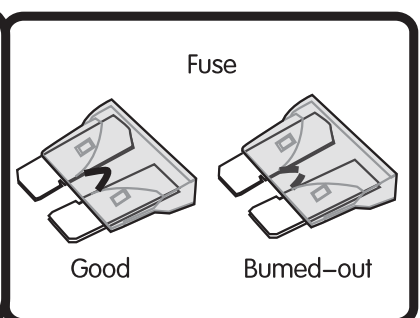
- 1.Before leaving the factory, this motorcycle has been fully charged to ensure that the power is adequate in all occasions. It is advisable to charge 18 hours before using for the first time. Please recharge the battery by the steps below to keep it from being damaged.
Please use the screw driver to open the seat, connect the red terminal of charger with battery wire connector, and the other end of the charger into a household outlet for 10-12 hours. Never charge the battery longer than 24hours.
※If the battery's wire has been connected with the main wire please separate, it and then connect the red terminal of charger with the battery's connector.(Fig.4)
- 2.When the motorcycle seems to be traveling slower than it ought to be, please recharge immediately.
※Normally, the charger will generate some heat during charging. If not, it may be that the charger, or battery, or fuse is not working.
※Never charge continuously for more than 16 hours.
※Begin charging the moment the battery runs out of power. Further delay will surely damage the service life of the battery.
※Charge at least once every month even if the battery is left unused for a long time.
※Charging must be carried out under the supervision of a parent. Children must not be allowed to charge by themselves.
※Do not under any circumstances turn the handlebar when charging.
- 3.When the music is not sound or sound weakly this means powerless, replace with two pieces of DC1.5V AA battery.
※To change the battery, open the top of the instrumental panel kit, take out the 2 DC1.5V AA batteries, and then disconnect the connector to replace the batteries.
※Charge immediately after each ride to ensure sufficient power at any time, thereby extending battery life.

● EASY MAINTENANCE



WARNING:

**RISK OF FIRE. DO NOT BYPASS.
REPLACE ONLY WITH UL LISTED
30A FUSE.**



- 1.When your motorcycle stops unexpectedly, please do not worry, wait for 20 seconds as the motorcycle comes with a power failure system in case of improper operation or overload, after 20 seconds it will resume the operation on its own.
- 2.In case of trouble by reasons other than the aforementioned, please check to see if the fuse has burnt out (see the drawing).If so, please replace the fuse. (As attached to the battery wire, or procure one of the original specification from a local electrician's shop)
- 3.If the motorcycle remains not moving after both preceding steps have been completed, check if all the connectors in the circuitry are secured in position. If so, it is likely the battery is out of order
- 4.If all these steps have been followed and the motorcycle remains not moving, bring the motorcycle to a qualified servicing station for maintenance and repair.

● IMPORTANT

- 1.Never straddle over the motorcycle except the seat to maintain personal safety and service life of the motorcycle.
- 2.Never shift the gear from high to low or vice versa in the forward or reverse movement during driving.
- 3.Never start up the engine when you are sitting firm on the seat (avert collision during driving.)
- 4.This is an electric driven vehicle; all electric components shall be always kept away from the moist. Never wash the body with water.
- 5.The plastic components shall be kept away from the high temperature and fire. If not in use pull the main switch and disconnect the battery terminal clamps.
- 6.It is strictly prohibited to make an abrupt stop in high speed driving.

● WARNING

- 1.Please read this manual thoroughly before attempt to operate this motorcycle.
- 2.Never park this motorcycle on the highway, slope or pond side which is dangerous place.
- 3.The children less than 3 years old do not permit this motorcycle for use.
- 4.This motorcycle shall be always operated under the close supervision of adult.
- 5.The battery recharging shall be carried out under close watch by parent or adult.
- 6.The motorcycle is only designed for driving on smooth or cement surfaces inside your house.
Never drive on sandy, beach, soft soil, uneven surfaces or where water gathers.
- 7.Only use the battery and charger specified by the manufacturer.



WARNING:

To reduce the risk of injury, adult supervision is required. Never use on road ways, near motor vehicles, on or near steep inclines or steps, swimming pools or other bodies of wate, Always wear shoes and never allow more than one rider.