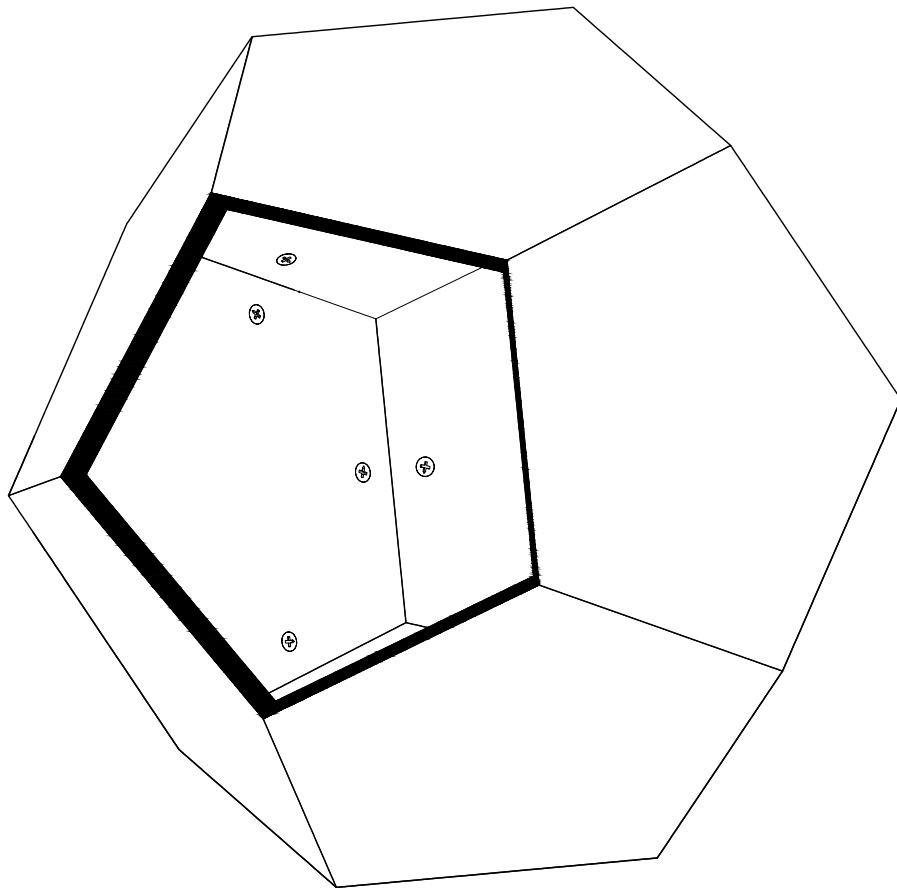
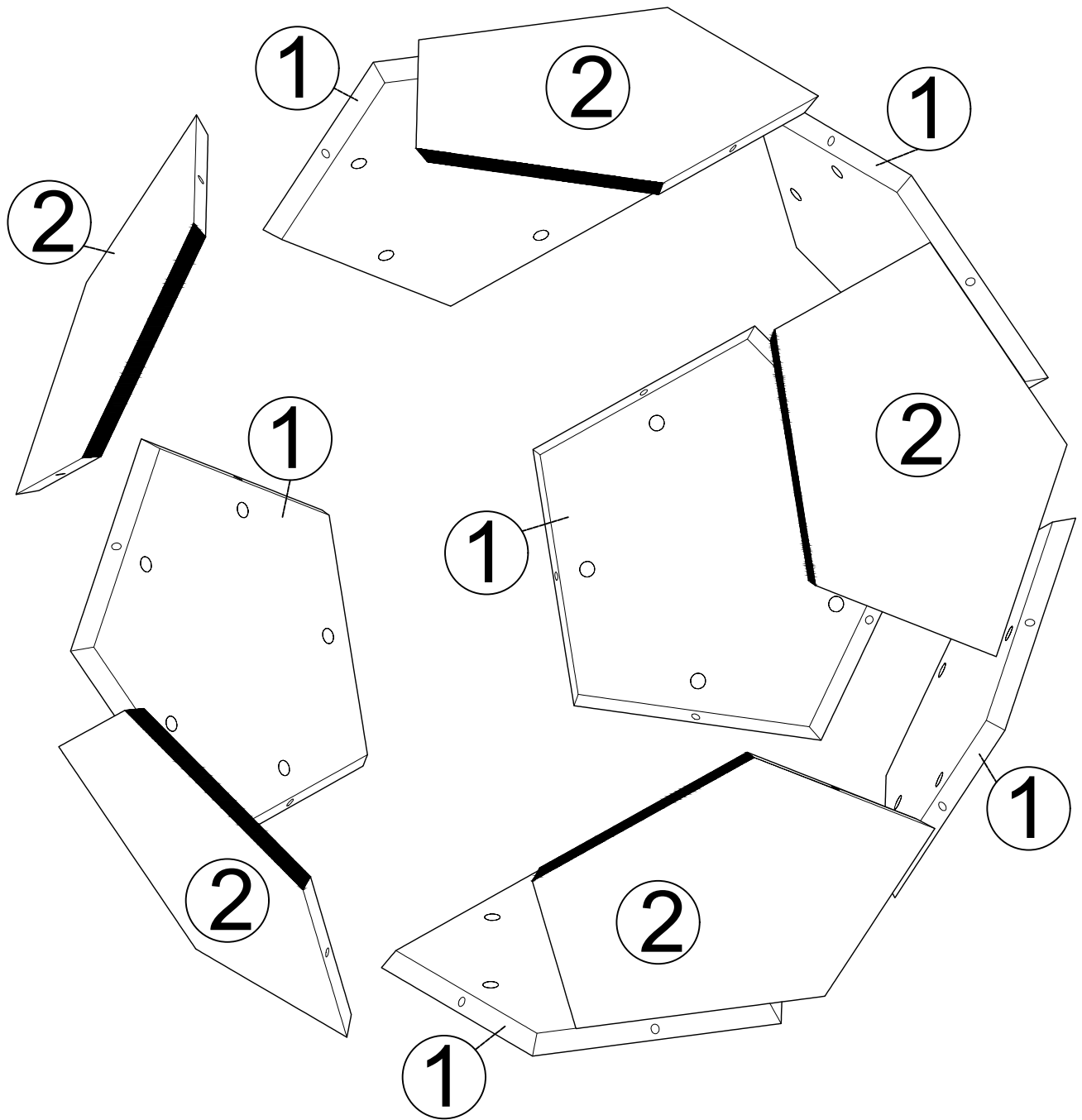


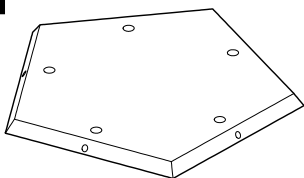
# ASSEMBLY INSTRUCTIONS

This product is some difficult to assemble, but also as fun as assembling toys, please be patient to complete the assembly of the product, I believe you are an awesome life gamer. Game Start! Cheer up!



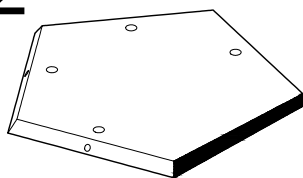


1



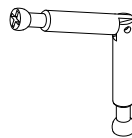
x6

2



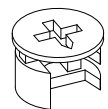
x5

A



x25

B

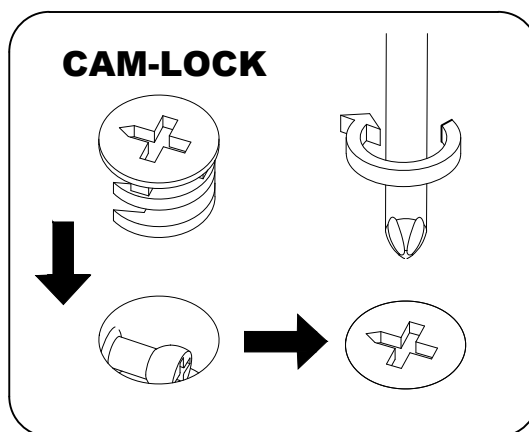
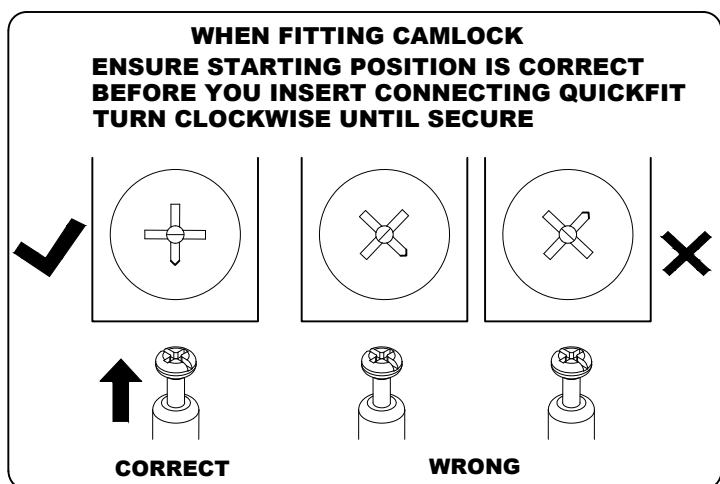


x50

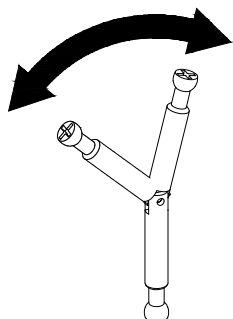
# SPECIAL TIPS FOR FITTING CAM-LOCKS AND QUICKFIT

DON'T FULLY TIGHTEN THE SCREWS BEFORE FINISHING ASSEMBLY, ONLY TIGHTEN THEM 80% TO ENSURE THE CAM-LOCK DO NOT DROP OUT.

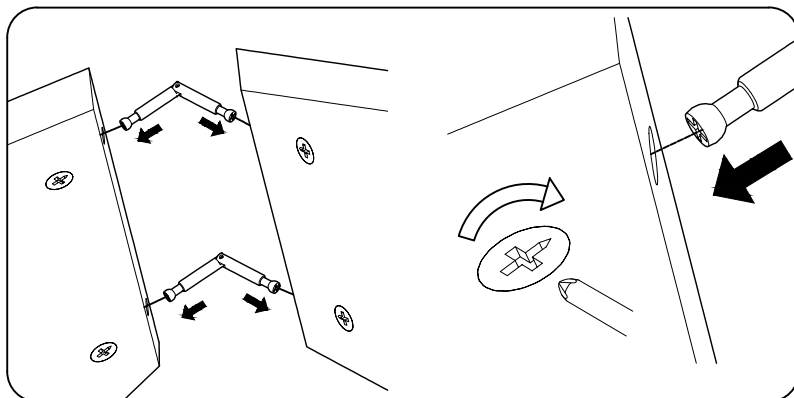
NOTE: AFTER ASSEMBLY, PLEASE MAKE SURE THAT ALL SCREWS ARE 100% LOCKED.



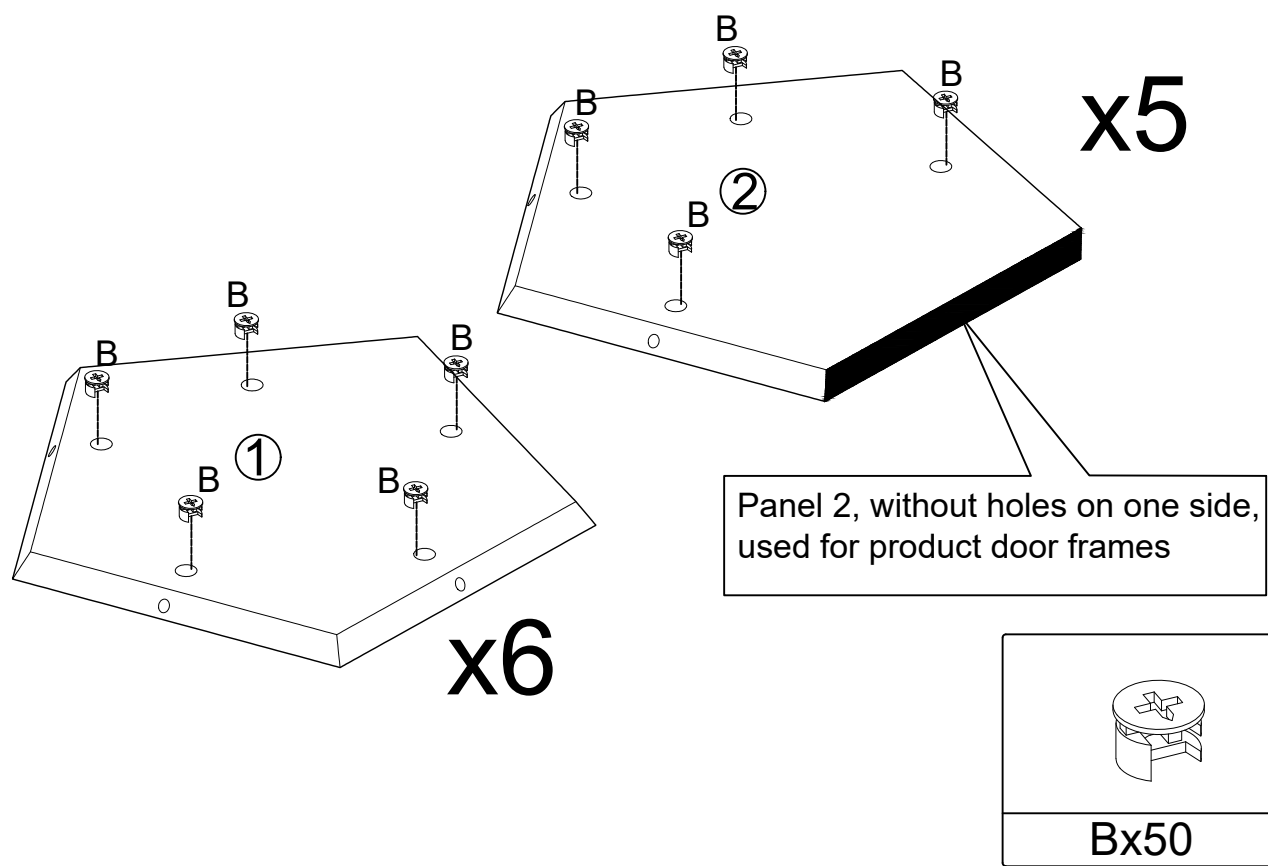
**Quickfit head needs to be in centre**



**The screw can be rotated  
at the desired angle**

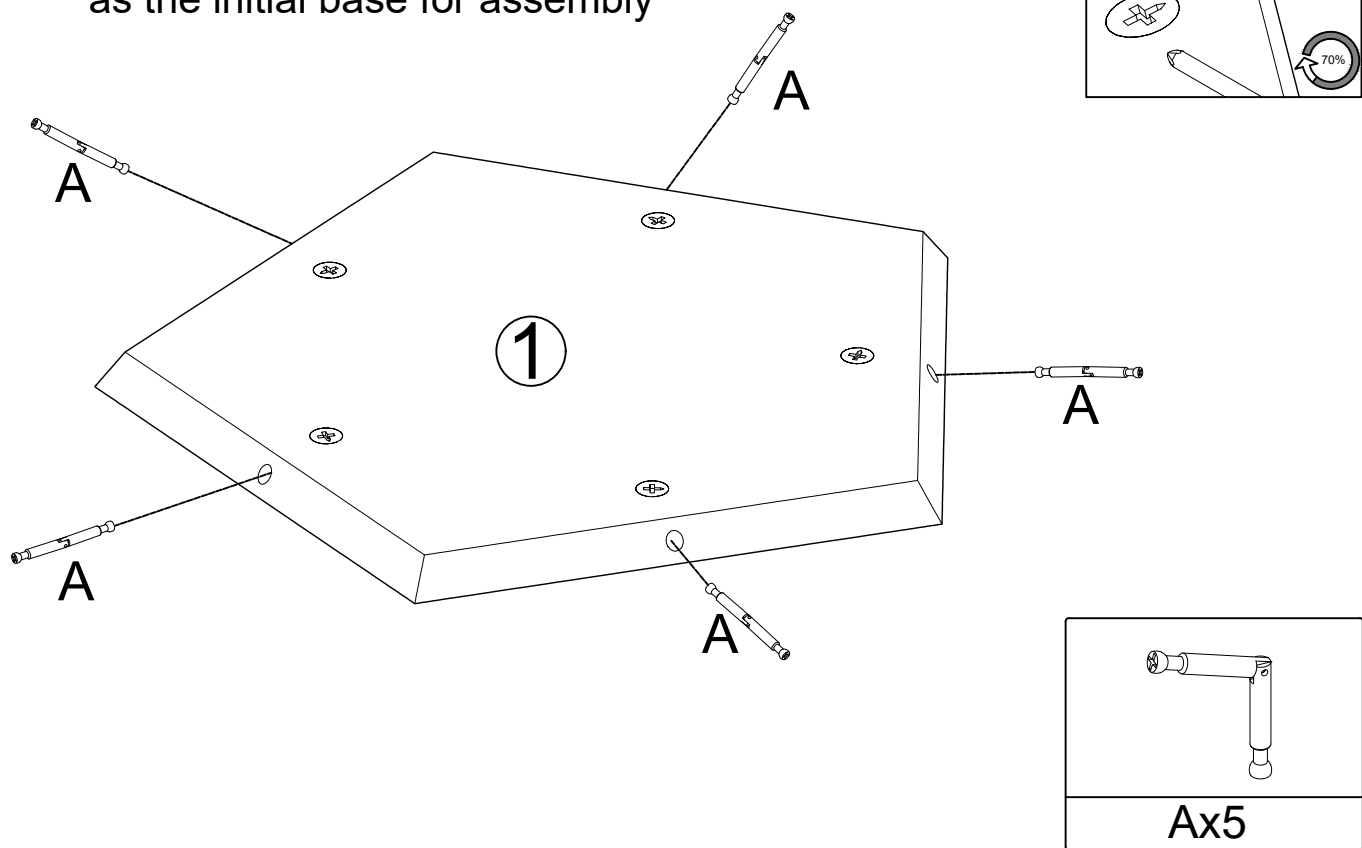


STEP:1

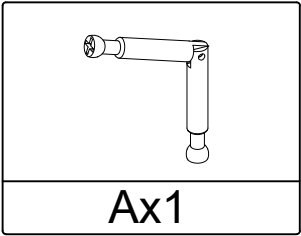
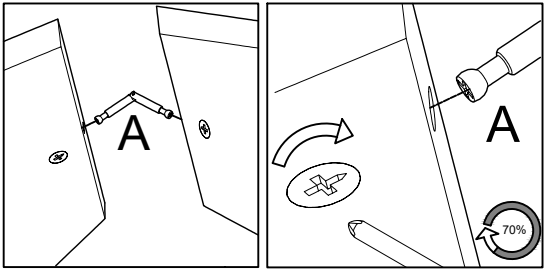
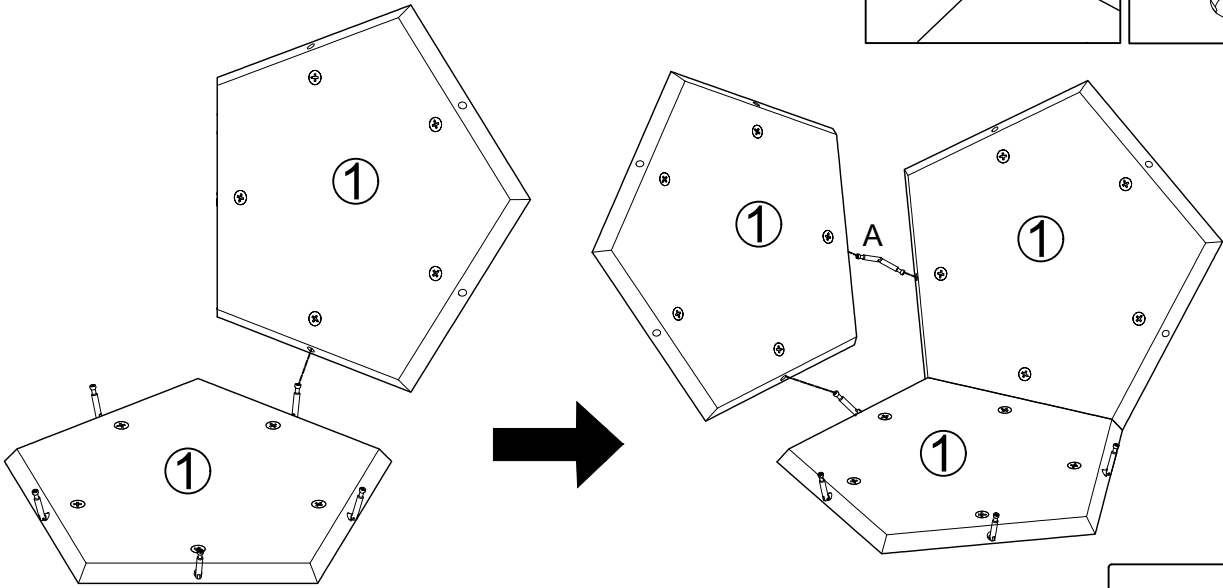


STEP:2

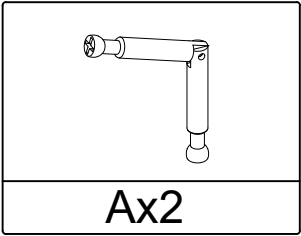
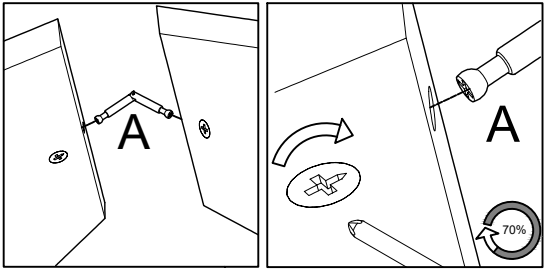
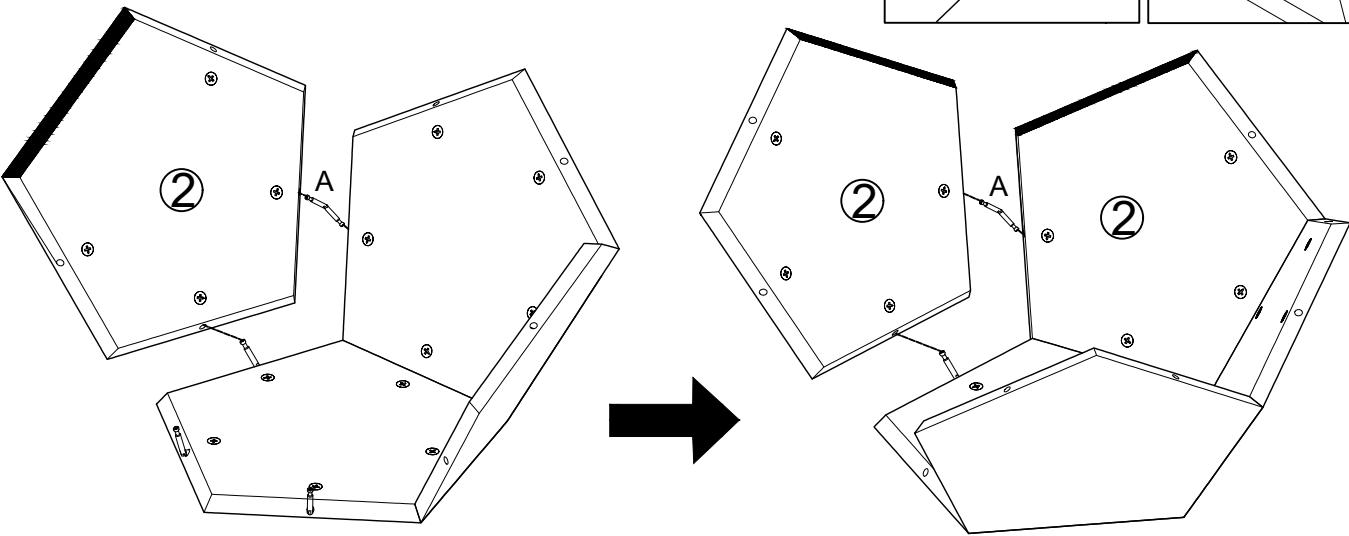
Please select any component number ① as the initial base for assembly



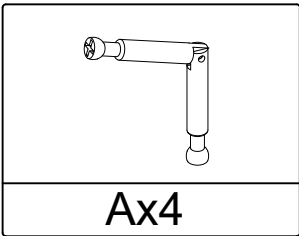
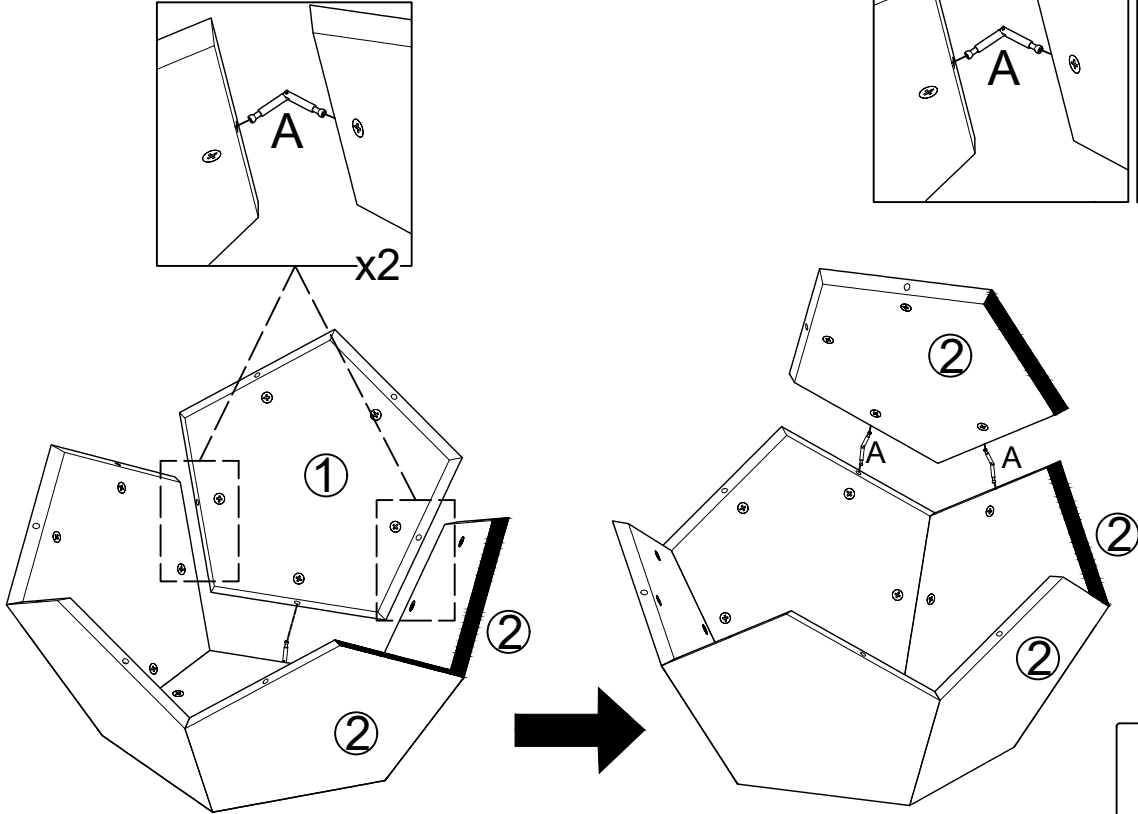
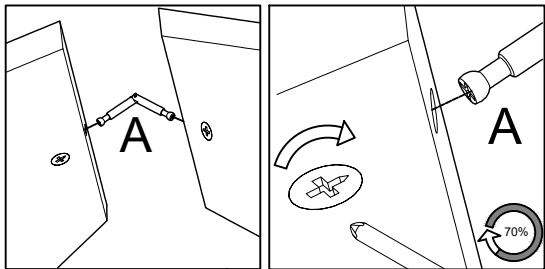
STEP:3



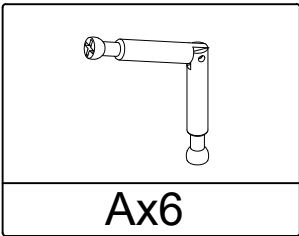
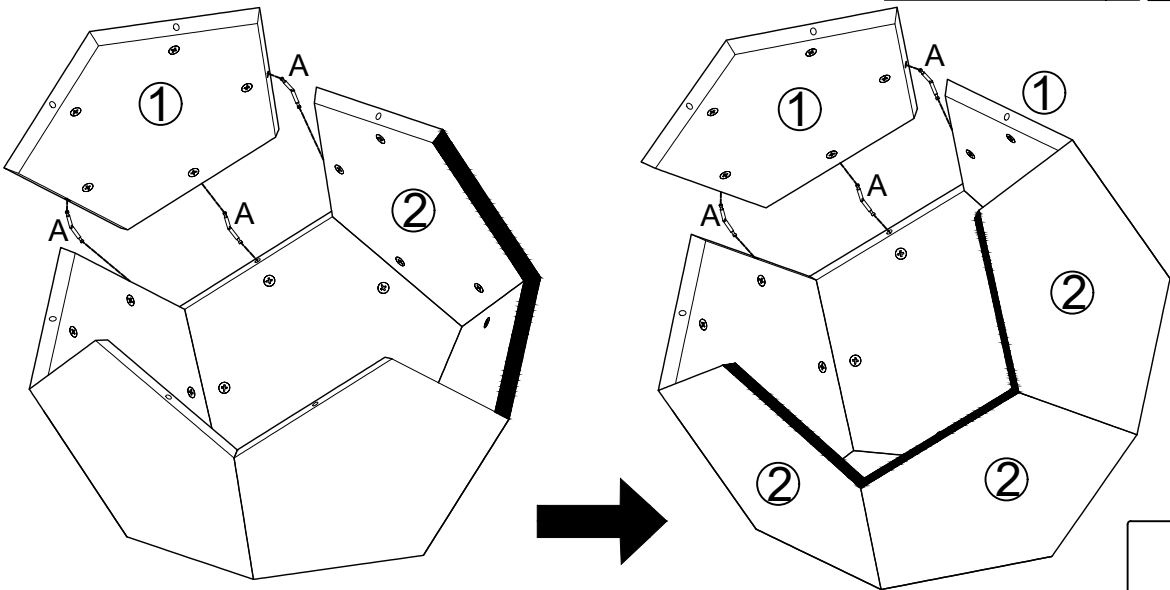
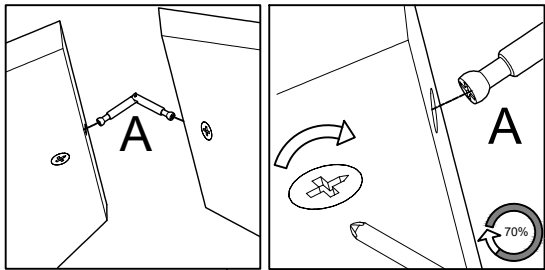
STEP:4



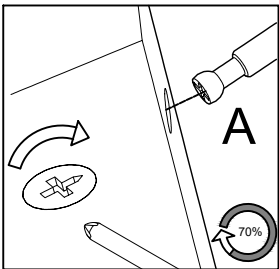
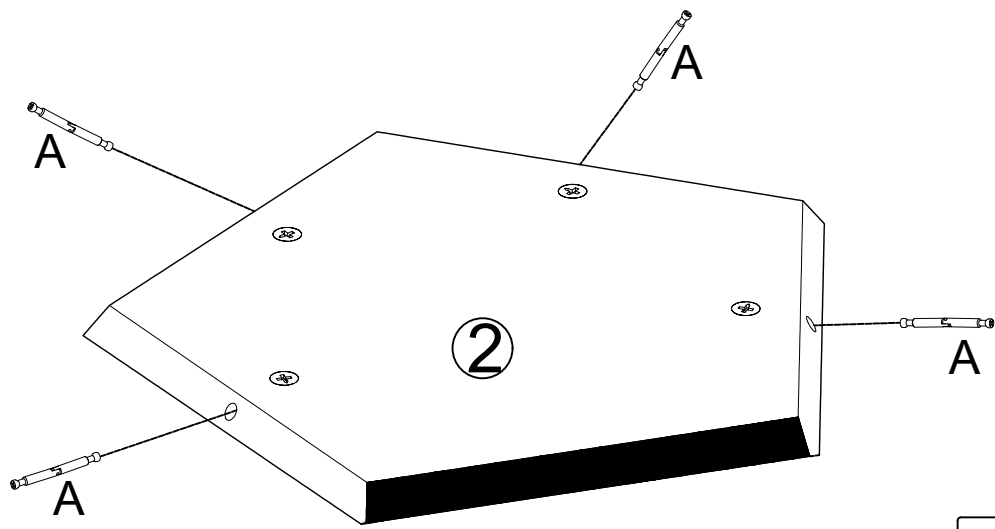
STEP:5



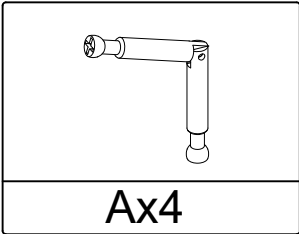
STEP:6



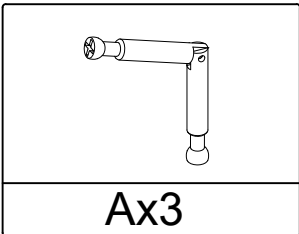
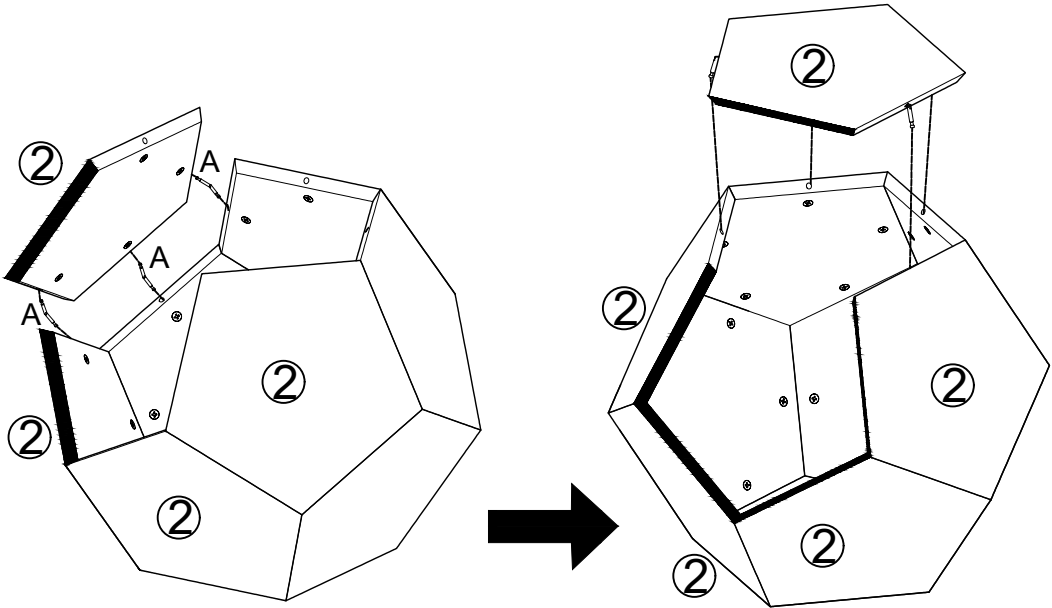
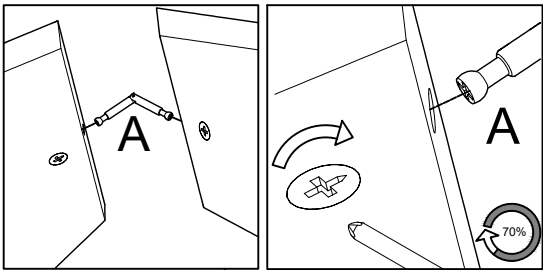
STEP:7



Please select any component number② as the final top plate for assembly



STEP:8



STEP:9

