

# Easy to Install

Installation process

Step 1



Loosen the Screws & Remove the Mounting Plate

Step 2



Mark drill positions with a pen.

Step 3



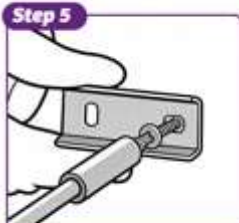
Drill Holes with a 6mm Power Drill

Step 4



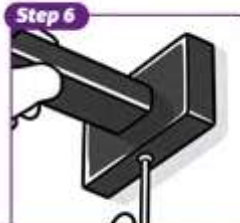
Insert Expansion Anchors

Step 5



Secure the Mounting Plate & Tighten Screws

Step 6



Final Tightening with an Allen Key