



LOS FLEXI  
CRAFTING YOUR HOME STORY

LFE81-E Smart Toilet

# User Manual



[www.losflexi.com](http://www.losflexi.com) | [cs@loflexi.com](mailto:cs@loflexi.com) | (+1)662-502-5099

# CONTENTS

## GETTING STARTED

Parts Diagram.....	<a href="#">3</a>
Features.....	<a href="#">4</a>
Side Control Panel.....	<a href="#">5</a>
Remote Control Panel.....	<a href="#">6</a>

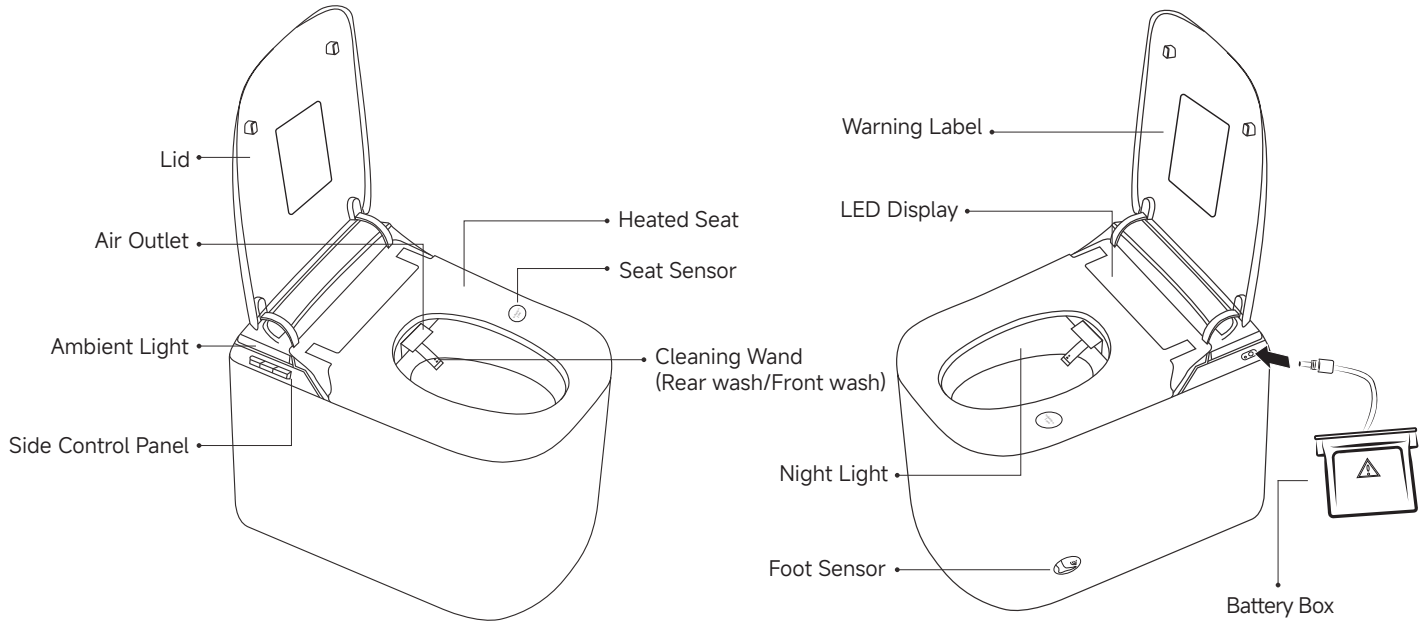
## OPERATION

Remote Control Introduction .....	<a href="#">7</a>
Function Description .....	<a href="#">9</a>
LED Display.....	<a href="#">12</a>
Standby Mode Settings .....	<a href="#">13</a>

## CARE & SUPPORT

Clean & Maintenance .....	<a href="#">14</a>
Troubleshooting.....	<a href="#">15</a>
Limited Warranty Coverage .....	<a href="#">18</a>

# Parts Diagram



# Features

## Cleanliness



Self-Cleaning Nozzle



Removable Nozzle Tip



Antibacterial Seat

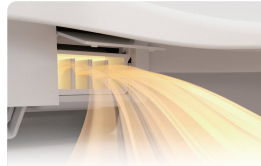


Rimless Design

## Comfort



Heated Seat



Warm Air Dryer



Oscillating Wash



Soft Night Light

## Convenience



Auto Open/Close Lid



Foot-Touch Flush



Auto Flush on Stand-Up



Power Outage Flushing

## 8X Protection



Anti Low Temperature Scald



Flame-Retardant Protection



Overheating Protection



Short-Circuit Protection



Leakage Protection



Water Pressure Protection



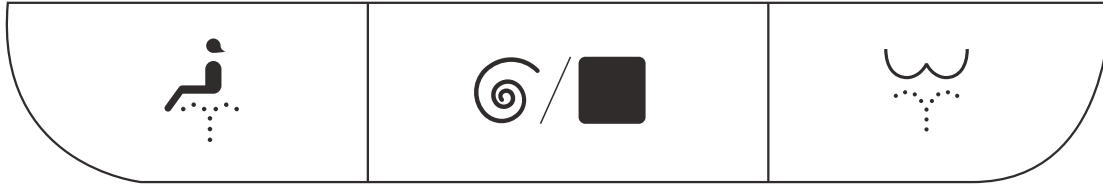
IPX4 Waterproof



Over-Voltage Protection



# Side Control Panel



## Front Wash

Press to start.  
Press again to switch modes  
or stop.



## Flush / Stop

Press to flush or stop any  
function.

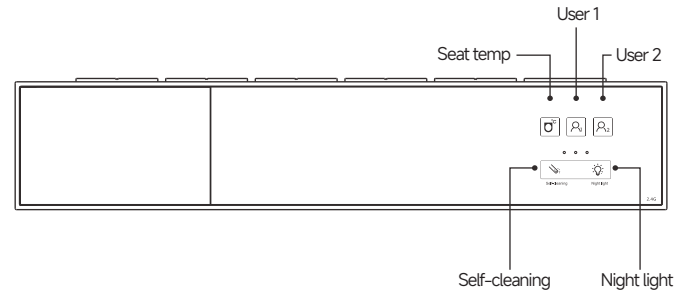
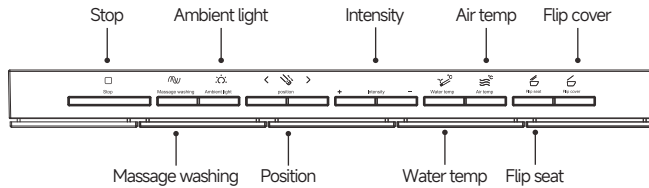
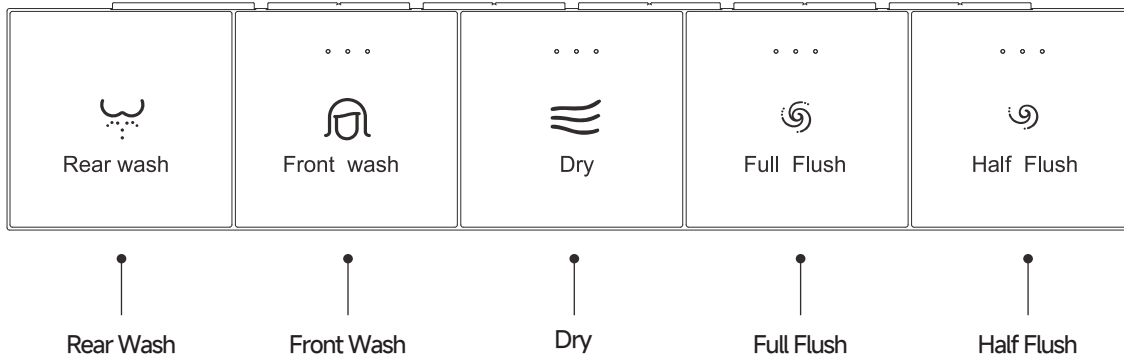


## Rear Wash

Press to start.  
Press again to switch modes  
or stop.



# Remote Control Panel

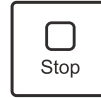


# Remote Control Introduction



## Rear Wash

Press while seated to start rear cleansing.  
Press again to activate oscillating (moving) spray.



## Stop

Short press to stop all functions.



## Front Wash

Press while seated to start feminine cleansing.  
Press again to activate oscillating (moving) spray.



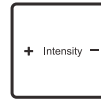
## Ambient Light

Press to toggle ambient lighting on/off  
(long beep = on, short beep = off).



## Dry

Press while seated to start warm-air drying.



## Intensity (+ / -)

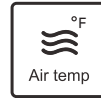
During Rear/Front Wash, press [+] / [-] to adjust water pressure. 4 levels available.



## Full Flush

Short press: Full flush. Auto flush after leaving the seat is on by default. To switch Auto Flush:

- Within 10 seconds of standby, press the flush button (long beep = on, short beep = off).



## Air temp

During Dry mode, press to cycle air temperatures:  
Room Temp • 102°F • 117°F • 131°F  
Indicator light shows current setting.



## Half Flush

Short press for a partial/half flush.



## Flip cover

Short press to open/close the lid.  
If seat is open, both seat and lid close together.





## Flip seat

Short press to open/close the seat.  
If lid is closed, both lid and seat open together.



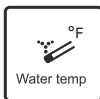
## Massage washing

Press to toggle pulsating water pressure on/off  
(long beep = on, short beep = off).



## Position ( < / > )

During Rear/Front Wash, press [<] / [>] to  
adjust nozzle position. 4 positions available.



## Water temp

During Rear/Front Wash, press to cycle water  
temperature: Room Temp • 93°F • 99°F • 104°F  
Indicator light shows current setting.



## Seat temp

Short press to cycle seat heating:  
Room Temp • 93°F • 99°F • 104°F  
Indicator light shows current setting.



## Self-cleaning

Short press → Nozzle cleaning  
Long press → Full forward/back sweep cleaning



## Night light

Short press → Night light On/Off  
Long press → Ambient light On/Off



## User 1

Long press → Save current settings (seat temp, water  
temp, air temp, nozzle pos., pressure)  
Short press → Apply saved settings instantly



## User 2

Long press → Save current settings (seat temp, water  
temp, air temp, nozzle pos., pressure)  
Short press → Apply saved settings instantly

## Remote Control Code Matching

1. Long press [Stop] on the toilet side panel to enter standby.
2. Long press [Stop] again.
3. Within 20 seconds, long press [Front Wash] until you hear 1 beep.
4. Press any button on the remote. You will hear 2 beeps — pairing is complete.

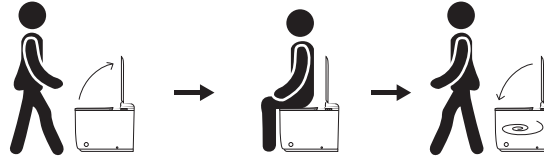


# Function Description

## ■ Auto open/close lid (for wowan/man)

The smart toilet can realize the function of auto lid open/close.

On closed situation, so please turn on the auto lid open/close function by using remote control.



## ■ Foot sensor (for man)

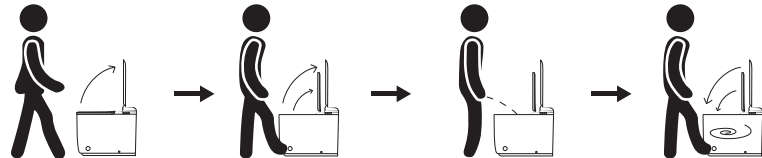
Lightly tap the foot sensor switch to control lid, seat, and flush.

Operation (starting with lid closed):

Approach toilet → Auto open lid

1st tap = Raise seat

2nd tap = Lower seat + Close lid + Flush



※ Seat Sensor react automatically when sitting on the seat. Water comes out to pre-wet the inner ceramic bowl.

## ■ Seasonal Temperature Mode

When enabled: water, air, and seat temperatures adjust automatically based on room temperature.

Long press [Air Temp] button:  
Short beep = OFF | Long beep = ON

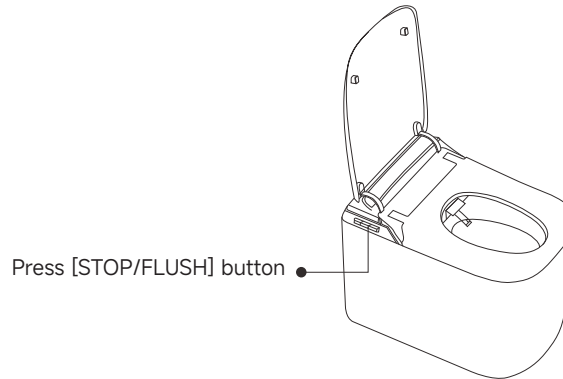
Room Temp	Auto Level	Seat Temp
Below 50°F	Level 3	104°F
50°F – 71°F	Level 2	99°F
72°F – 85°F	Level 1	93°F
86°F and above	Level 0	Room temp

## ■ Power Outage Flushing

This allows manual flushing during a power outage.

When power is out: Press [STOP/FLUSH] button (side panel) once to flush.

※ If flushing does not work, replace the backup battery.



## ■ Extended Sitting Reminder

When enabled: Buzzer sounds after 30 minutes of continuous sitting.

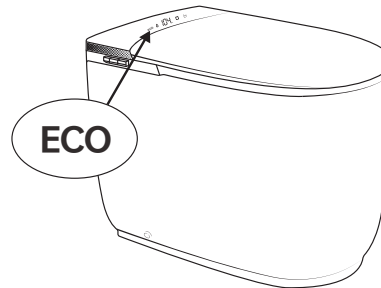
Long press [Water Temp] button:  
Short beep = OFF | Long beep = ON



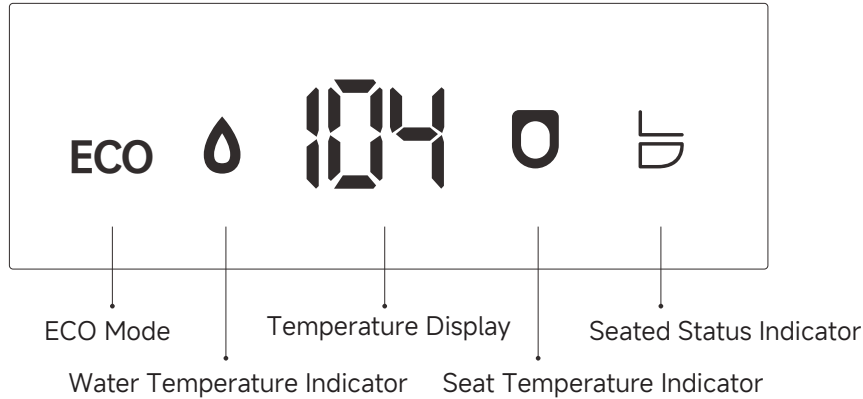
## ■ Eco Energy-saving Mode





When enabled: Seat maintains lowest temperature during standby. Upon sitting, seat heats to your set temperature if higher than minimum.

Long press [Seat Temp] button:  
Short beep = OFF | Long beep = ON



# LED Display



ICON	Description
ECO	When seat temperature is set above 93°F, heating pauses at 93°F until user sits. Upon sitting, seat heats to set temperature.
	Solid/Flashing: Water temperature is being adjusted. -- indicates room temp (no heating). Adjustable in 4 levels: Room temp, 93°F, 99°F, 104°F
	Shows current set temperature; -- indicates room temp (no heating). E1 = Water temp sensor open      F1 = Seat temp sensor open E2 = Water temp exceeds 113°F      F2 = Seat temp exceeds 118.4°F E3 = Water temp sensor short      F3 = Seat temp sensor short E4 = Water temp below 32°F E5 = No water supply
	Solid/Flashing: Seat temperature is being adjusted. -- indicates room temp (no heating). Adjustable in 4 levels: Room temp, 93°F, 99°F, 104°F
	Solid/Flashing: User is seated.



# Standby Mode Settings

Enter Standby Mode: Long press [Stop] button (side panel or remote)

Setting	Default	How to Adjust	Options/Notes
<b>Seat Opening Strength</b>	S5	Long press [Position -] → Short press [+] / [-] to adjust	Range: S1-S9 Display shows selected level
<b>Lid Opening Strength</b>	C5	Long press [Position +] → Short press [+] / [-] to adjust	Range: C1-C9 Display shows selected level
<b>Foot Sensor – Main Switch</b>	ON	Long press [Flip Seat]	Long beep = ON Short beep = OFF
<b>Foot Sensor – Seat/Lid</b>	ON	Short press [Flip Seat]	Performs: 1. Open lid; 2. Open seat; 3. Small punch; 4. Close seat Long beep = ON / Short beep = OFF
<b>ECO Energy-Saving Mode</b>	OFF	Long press [Seat Temp]	Long beep = ON Short beep = OFF
<b>Radar Detection Distance</b>	L2 (24")	Long press [Flip Cover] → Short press [+] / [-] to adjust	L0 = OFF; L1 = 12" (30cm); L2 = 24" (60cm); L3 = 35" (90cm); L4 = 47" (120cm); L5 = 59" (150cm)
<b>Auto Flush After Leaving</b>	ON	Long press [Full Flush]	Long beep = ON Short beep = OFF
<b>Flush Duration</b>	F2	Long press [Full Flush] → Short press [+] / [-] to adjust	Range: F1-F4
<b>Auto Lid Close</b>	ON	Short press [Flip Cover]	Long beep = ON Short beep = OFF
<b>Auto Lid Open</b>	ON	While powered on: Long press [Flip Cover]	Long beep = ON Short beep = OFF
<b>Automatic Drying</b>	OFF	Long press [Dry]	Long beep = ON Short beep



# CLEAN & MAINTENANCE

## IMPORTANT SAFETY NOTICE

This product is an electronic appliance. Use caution during cleaning and maintenance to prevent water from entering the internal components. Keep the seat sensor area clean at all times.

Do not allow foreign objects (such as seat covers or wraps) to cover or obstruct the sensor area.

Dirt or debris adhering to the sensor may cause malfunction or improper operation.

Do not use cleaning chemicals on the filter screen, Rinse with clean water.

### · Exterior Plastic Surfaces

Most exterior components of the toilet are made of plastic. To prevent scratches, discoloration, or damage, follow the guidelines below:

Wipe surfaces regularly using a soft cloth dampened with clean water. If necessary, use a mild, neutral household cleaner, then rinse with clean water.

Because this is an electronic product, thoroughly dry all surfaces with a soft cloth after cleaning to prevent moisture ingress.

Always close the toilet shut-off (angle) valve and turn off the water supply before performing maintenance.

### · Cleaning the Angle Valve Filter (Recommended every 3 months)

① Close the toilet corner shutoff valve and stop the water supply.

② Insert a coin or Phillips screwdriver into the slot on the front of the angle valve cover, and turn counterclockwise to remove the inlet filter.

③ Rinse the filter under clean water, using a toothbrush or cotton swabs to gently remove any dirt, debris, or fine particles.

④ Reinstall the filter by turning it clockwise until secure. Ensure it is fully tightened to prevent water leakage.

### · Cleaning the Wash Nozzle

① With the seat unoccupied, press the 'Self-Cleaning' button to automatically extend and rinse the nozzle.

② Use a soft-bristle brush or toothbrush to gently clean the nozzle surface and remove scale or debris.

(The self cleaning mode will automatically stop after 90 seconds. You can press the "Stop" button to end the cycle earlier if needed;

Do not forcibly push or pull the nozzle during operation)

### · Winterization / Freeze Protection (When ambient temperature is below 39.2°F)

If the toilet will not be used for an extended period (such as during travel or business trips), follow these steps to prevent freezing and cracking:

① Close the toilet shutoff valve, press the flush button on the remote control to flush and empty the water tank.

② Activate the self-cleaning function to drain any remaining water inside the toilet.

③ Disconnect the water supply hose at the shutoff valve and drain any remaining water from the pipe.

④ Turn off the power supply to the toilet.

(Note: For pulse-type smart toilets, turn off the water supply near the end of the flushing cycle after initiating the flush, before draining.)

After storing the product in a low-temperature environment for a long time, If the unit has been stored in freezing conditions, allow it to sit at room temperature for at least 30 minutes before reconnecting water or power to ensure internal components thaw naturally and prevent damage. If the toilet or supply lines are frozen, wrap the affected hose or connections with a cloth soaked in warm (not boiling) water to thaw them gradually. Never pour hot water directly onto the product or use high-heat sources, such as heat guns or hair dryers, on the toilet body or water supply system, as this may cause permanent malfunction.

# TROUBLESHOOTING

Function	Issue	Possible Cause	Solution
Automatic Flushing	Toilet flushes automatically when no one is seated	Seat sensor is not compatible with the installed seat type	Replace with a standard compatible replacement seat
		Check if the configuration can be folded with a flip cover	Ensure the foot cover can be flipped while the seat itself remains unfolded
	No flush after leaving seat	Automatic flush function is disabled	Enable the automatic flush function in the settings Replace with a standard compatible replacement seat
Flushing issue	Flush operates but no up/down water flow change	Water distribution valve malfunction	Replace the water distribution valve
	Low flushing volume		1. Adjust the flushing time 2. Clean the water tank
	No water flow during flushing	Shutoff valve is closed	Fully open the shutoff valve
		Power cord is not plugged in	Plug in the power cord securely
		Water supply is shut off	Restore water supply
Water splashes from the nozzle	Nozzle position is not properly adjusted	Adjust nozzle position or angle	
Atmosphere lights	The ambient light is not on	Ambient light function is disabled	1. Remote control settings 2. Replace the light strip
Night light	The light is not on	Night light function is disabled	Enable the night light in the remote control settings
		Light strip malfunction	Replace the light strip
Drying function	Drying function cannot be activated	Drying function is turned off	Remote control settings
		Blocking plate is stuck	
		Fan control cable is loose or incorrectly connected	Replace the fan
	Drying outlet cannot close	Blocking plate is stuck	Replace the blocking plate
	Air temperature is too hot		Adjust the air temperature with the remote control
No heat	Heating element malfunction	Replace the heating wire	
Power supply	Toilet does not power on	Power supply is off	Turn on power supply
		Power outage	Restore power
		Main control board damaged (water ingress or burnout)	Replace the motherboard
	Power trips during operation	Short circuit inside the unit	Replace the instant heater or heating module
	Frequent power interruptions	Internal short circuit	Contact a qualified service technician
	Power outage and unable to flush	Backup battery not installed or depleted	Install or replace the backup battery



# TROUBLESHOOTING

Function	Issue	Possible Cause	Solution
Cleaning function	Cleaning function does not activate	User is not seated	
		Female wash nozzle is improperly installed	
		Water hose is bent or kinked	
	Unable to wash buttocks	Is the human body seated	
		Check the installation of the women's washing tube	
		Check if the laundry tube is folded	
	Abnormal noise during cleaning	Can the cleaning function be used normally	Replace the spray bar
	Hip washing for women while washing water		Replace the spray bar distribution valve
	Water temperature is too hot or no warm water		1. Adjust the air temperature with the remote control. 2. Replace the instant heating module
	Nozzle does not extend	Check if the exit is blocked by a stopper	
		Remove the cover plate and check if the fixing screws are loose	
Unable to adjust spray position	Is the spray bar pipe folded	Replace the spray bar	
Spray continues flowing after wash	Check if the remote control is pressed to the self-cleaning function	1. Turn off self-cleaning mode 2. Replace the distribution valve	
Weak wash pressure	Wash outlet is stuck	Gently push the outlet forward and retry several times	
Seat issue	Seat will not close properly		Replace the motor or damping mechanism
	Seat temperature cannot be adjusted	Seat temperature sensor cable not connected	Reconnect or replace the seat ring
	Seat does not heat or overheats	Seat heating function is disabled	1. Adjust seat temperature using the remote control 2. Replace the seat ring
	Seat alignment is incorrect		Adjust flip force via remote control settings
Cover issue		Automatic flip function is disabled	Enable automatic lid function using the remote control
	Lid makes abnormal noise	Flip motor malfunction	
		Burrs or debris on lid surface	
Lid will not close	Automatic lid close function disabled	Enable automatic lid closing in remote control settings	
Remote control	Remote control does not work	Battery not charged	1. Replace the battery 2. Replace the remote control
	Remote display does not light up		
	Unstable signal	Distance exceeds operating range	Replace the remote control
Moisturizing function	Function does not work	Up/down water flow does not switch properly	Replace the distribution valve



# TROUBLESHOOTING

Function	Issue	Possible Cause	Solution
Display	Display screen has missing segments	Power supply is unstable	Replace the display screen
	No display or flashing screen		
Networking	Unable to connect to the internet	Bluetooth is turned off	Enable Bluetooth permission and re-enter the mini program
	No device found during pairing	Check if Bluetooth is allowed by the mini program	
Kick function	Kicking does not activate lid opening	Foot sensor function is disabled	Enable foot sensor function in remote control settings
	Kicking does not activate flushing		Replace foot sensation
Water leakage	Water tank leaking	Water tank is damaged	Replace the water tank inlet
	Water leaking from cover area	Internal seal or component failure	Contact a qualified service technician
	Interface leakage		
	Water leakage from inlet pipe/angle valve	Connection is loose or damaged	Tighten connection or replace inlet pipe / angle valve
Buttons/Control knob	Buttons or control knob do not respond	Unit is not powered on	Restore power and check
Display fault code	E1	Water temperature sensor open circuit or disconnected	
	E2	Water temperature too high (outlet temperature exceeds 113°F)	
	E3	Water temperature sensor short circuit	
	E4	Inlet water temperature too low (below 113°F)	
	E5	Insufficient water supply	
	F1	Seat temperature sensor open circuit or disconnected	
	F2	Seat temperature too high (exceeds 118.4°F)	
	F3	Seat temperature sensor short circuit	
Other	Toilet is blocked	Plumbing or toilet blockage	Lift both sides of the toilet and flush to determine whether blockage is in the toilet or household piping
	No water storage	Water distribution valve malfunction	Replace the water distribution valve
		Downward charger not connected properly	
	Toilet makes abnormal noise	Household water pipes or faucet pressure issue	Replace the distribution valve



## LIMITED WARRANTY COVERAGE

### ONE YEAR LIMITED WARRANTY

Los Flexi products are crafted with superior materials and impeccable workmanship, offering our customers reliable and long-lasting products. If defects in materials or craftsmanship are detected under standard use within the first one years of installation, Los Flexi will either supply replacement parts at no charge or, if deemed necessary, replace the product or its parts.

This warranty is exclusive to the original purchaser, and proof of purchase is mandatory for any claim.

This Warranty Will Be Voided If:

- The product's installation did not follow our recommendations.
- The product was relocated from its initial installation site.
- The product underwent any modifications from its original condition.
- The product suffered from neglect, misuse, chemical overuse, accidents, or any other damages.

Los Flexi does not imply that our products adhere to local building or plumbing codes. Consumers must ascertain local code compliance before and during installation. This warranty is strictly for the original purchaser and first consumer.

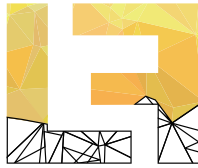
Los Flexi won't be held responsible for any consequential damages linked to the product's installation, replacement, return, or usage. This includes, but is not limited to, freight charges, labor, downtime, home damages, and other associated costs (e.g., professional services, investigations, audits, legal fees).

This Los Flexi warranty clearly delineates our liability. Items not specified in this warranty fall outside Los Flexi's responsibility. In states with variations concerning implied warranties, our compliance is ensured.

**For any queries or concerns, feel free to reach out to us at**

Email: [cs@losflexi.com](mailto:cs@losflexi.com)  
Voicemail: (+1) 662-502-5099  
Site: [www.losflexi.com](http://www.losflexi.com)





LOS FLEXI  
CRAFTING YOUR HOME STORY



Scan for the High-resolution User Manual