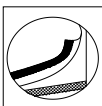
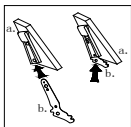


ASSEMBLY INSTRUCTIONS

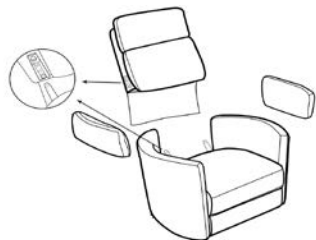
MANUAL PRODUCT

Step 1:
Parts list on the right

PARTS LIST:		Sofa	Loveseat	Recliner
A	BACK			1
B	SEAT			1



A



B

Step 2: Attached the KD back to the base frame by aligning the mechanism receivers with the mechanism post as seen at the left. After aligning both sides, push firmly in a downward motion until you hear a clicking noise. The noise indicates the back is locked to the base frame. Please make sure both sides are locked in position. Attached the outside back along the bottom rear of the base frame with the pre attached velcro.(As shown on right)

Picture shown for reference only.

Caution:
Read the Operating Instruction supplied before operating your power mechanized equipment.
Do not allow children to play on or operate this power mechanized equipment

49901527

MADE IN VIETNAM