



Air Switch

KWDA-100

Congratulations on the purchase of your new Kraus plumbing fixture!

Please keep the box and packaging materials until your product is completely installed. If you have any questions, require technical assistance or have any problems with your product:



DO NOT RETURN TO STORE

**Please contact our Customer Service Team
1-800-775-0703 / customerservice@kraususa.com**

Have the model number available and retain a copy of your receipt with purchase date for reference.

If for any reason this product does not meet your expectations, please be sure to repack this product in the original box and packaging material to avoid damage during transit.

For technical assistance or replacement parts, please contact Kraus Customer Service and one of our representatives will be happy to help:
Toll-Free: 800-775-0703 or Customerservice@kraususa.com

Prior to Installation:

- Make sure you have all necessary parts by checking the diagram and parts list. If any part is missing or damaged, please contact Kraus Customer Service at 800-775-0703 for a replacement.
- Pre-drilled hole size requirement: 1 3/8" (min) - 1 1/2" (max)
- Max countertop thickness: 2"

Tools you will need:



Safety Instructions

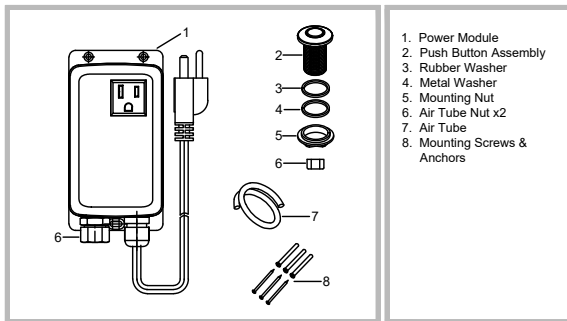
Air Switch is rated for 120V/3 AMPS maximum and must be installed according to national, state, and local electrical code requirements. It can be used for 1HP max, but it is not associated with the UL listing of the product. Consult with a local code professional for the appropriate requirements and additional safety information.

⚠CAUTION - Must not exceed the electrical rating of the air switch or the electrical supply.

⚠CAUTION - Children should not operate this product without constant supervision to avoid the risk of injury.

The air switch base must be positioned to allow drainage of electrical component compartment.

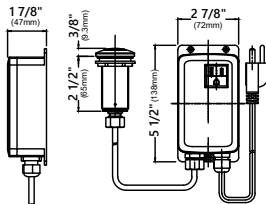
Diagram and Parts List



Specifications

- KWDA-100** (single-channel control):
Input: 125V ac, 60Hz, 3A max
Output: 125V ac, 60Hz, 3A max
- KWDA-101** (Duplex outlets):
Input: 125V ac, 60Hz, 6A max
Output: 125V ac, 60Hz, Each socket 3A max
- Working temperature : is -10~50C
- Working cycles are 100K
- "Type 1 Enclosure",
- Purpose of control: Operating Control;
Construction of control: IN-LINE CORD CONTROL
- Type 1 Action;
- Pollution Degree: 2;
- Impulse Voltage: 1500 V;
- IP 20

Dimensions



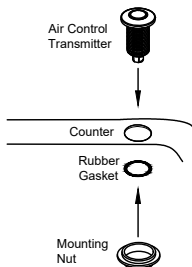
KWDA-100

Installation and Use

Working principle : The first pushing on air button actuates the air switch and the air switch keeps actuating when air button is released . A second push on the air button will release the air switch.

1. The switch box can be installed horizontally or vertically, but ensure that the switch box is in the right direction during vertical installation.
2. Recommended length of installation pipe is less than 2m.

Step 1. Mount Push Button

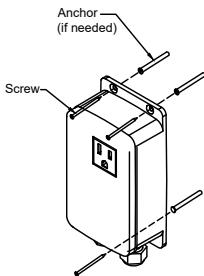


Mount the push button directly through a standard sink hole or drill a minimum 1 1/4" hole.

Place the rubber gasket between the bottom of the sink counter and the mounting nut.

Tighten the plastic nut under the sink counter to ensure a watertight seal.

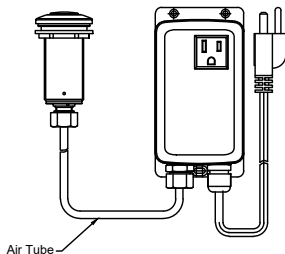
Step 2. Mount Power Module



Mount the power module to the cabinet wall atleast three feet within an electrical outlet and the disposer.

Use three screws (8) to fasten the power module to the cabinet. Use the anchors if needed.

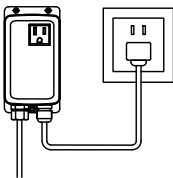
Step 3. Attach Air Tube



Attach air tubing between the push button and power module.

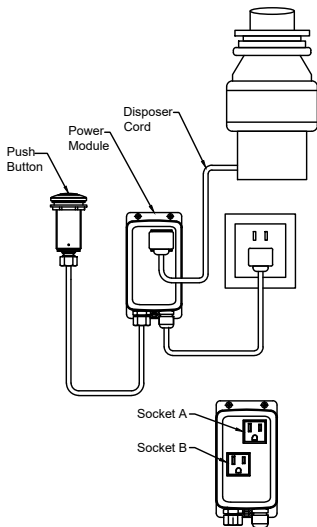
Make sure the two sides of the air tube have been connected. Tighten the air tube nut on the push button and power module until snug.

Step 4. Plug in Power Module



Plug the power module into a dedicated, grounded 120V AC outlet which is continuously energized.

Step 5. Connect Power Module and Disposer



Plug the disposer cord in the power module.

Press the push button to ensure that the Countertop Switch can turn the disposer on and off.

Be sure that the control system is operating properly before using the unit.

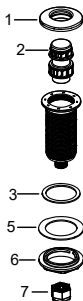
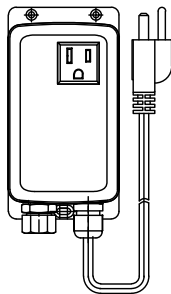
One push on, another push off. If you have any problem, please feel free to contact Customer Service.

NOTE: The sockets A and B, initially one of them is "On" (assuming A is "On"), the other is "Off" (assuming B is "Off"), then press the button, then the socket A becomes "Off", and the socket B becomes "On", This is called alternate control.

CAUTION/MISE EN GARDE

Disposer may start when the disposer cord is plugged into the power module. Push the Countertop Switch button once to stop the disposer.

Replacement Parts



Replacement Parts List	Finish/Color	Part #
1. Cover Assembly	SFS, MB, CH*	KP27419
2. Button Assembly	SFS, MB, CH*	KP27420
3. Rubber Washer		KP27421
4. Air Tube		KP59003
5. Metal Washer		KP27422
6. Mounting Nut		KP27423
7. Air Tube Nut		KP27424
8. Mounting Screw & Anchors		KP59008

*Denotes air switch component color options:
 SFS - Spot Free Stainless Steel
 MB - Matte Black
 CH - Chrome

Accessories

Kraus® USA Plumbing, LLC ("Kraus") extends this warranty to the original purchaser for personal household use of the Accessories when purchased from an authorized Kraus dealer and in the location of original installation. This warranty is non-transferable.

Kraus warrants the structure and finish of the Accessories to be free from defects in material and workmanship under normal usage for a period of one (1) year from the date of purchase.

Any product reported to the authorized dealer or to Kraus as being defective within the warranty period will be repaired or replaced with a product of equal value at the option of Kraus.

Commercial Warranty

Kraus USA Plumbing, LLC ("Kraus") warrants its Products for a period of one (1) year to commercial purchasers of Products used in industrial, commercial and business applications.

Care and Cleaning Instructions

Certain cleaning products may cause damage to a Product's finish and use of the following on the Product will void this warranty:

- Abrasive cleaners such as powders, bleach, ammonia, alcohol or chlorine
- Abrasive pads, steel wool or wire brushes

What is Not Covered

This warranty does not cover Products that were discontinued when purchased or display Products, whether such Products were purchased at discount outlets, unauthorized dealers, and/or sold on clearance. This warranty does not cover any free gifts included with purchase.

This warranty does not cover damage resulting from neglect, misuse (including use for an unintended application), abuse, carelessness, accident, hard water or mineral deposits, exposure to corrosive materials, improper maintenance, alteration of the Product, or failure to follow care, cleaning or installation instructions enclosed with your Product. Kraus recommends that all Kraus Products be installed by a fully licensed and insured trade professional with experience in the installation of bathroom and/or kitchen manufactured goods.

Download the Kraus Care & Maintenance Guide at:
<http://www.kraususa.com/maintenance>

How to Make a Warranty Claim

If you are a **consumer purchaser**, please contact a Kraus® Customer Service Representative at:

Kraus USA Plumbing, LLC
12 Harbor Park Drive
Port Washington, NY 11050
Toll-free 800-775-0703
Customerservice@kraususa.com

If you are a **plumbing contractor or trade professional**, please contact a Kraus Pro Representative at:

Kraus USA Plumbing, LLC
12 Harbor Park Drive
Port Washington, NY 11050
516-801-8955
Proservice@kraususa.com

If you are an **authorized partner**, please contact a Partner Support Representative at:

Kraus USA Plumbing, LLC
12 Harbor Park Drive
Port Washington, NY 11050
516-801-8954
Partnersupport@kraususa.com

In requesting warranty service, please be ready to provide your proof of purchase and a description of the problem. Shipping charges will be covered for the first (1) year of the warranted replacement part or product (HI, AK, and Puerto Rico shipping charges may apply). International shipping fees are not included.

Limitation on Duration of Implied Warranties

Please note that some states/provinces (including Quebec) do not allow limitations on how long an implied warranty lasts, so the below limitations may not apply to you. TO THE MAXIMUM EXTENT PERMITTED BY APPLICABLE LAW, ANY IMPLIED WARRANTY, INCLUDING THE IMPLIED WARRANTIES OF MERCHANTABILITY AND OF FITNESS FOR A PARTICULAR PURPOSE, IS LIMITED TO THE STATUTORY PERIOD OR THE DURATION OF THIS WARRANTY, WHICHEVER IS SHORTER.

Limitation of Special, Incidental or Consequential Damages

Please note that some states/provinces (including Quebec) do not allow the exclusion or limitation of special, incidental or consequential damages, so the below limitations and exclusions may not apply to you. TO THE MAXIMUM EXTENT PERMITTED BY APPLICABLE LAW, THIS WARRANTY DOES NOT COVER, AND KRAUS USA PLUMBING, LLC SHALL NOT BE LIABLE FOR, ANY SPECIAL, INCIDENTAL OR CONSEQUENTIAL DAMAGES (INCLUDING LABOR CHARGES TO REPAIR, REPLACE, INSTALL OR REMOVE THIS PRODUCT), WHETHER ARISING OUT OF BREACH OF ANY EXPRESS OR IMPLIED WARRANTY, BREACH OF CONTRACT, TORT, OR OTHERWISE.

This warranty gives you specific legal rights, and you may also have other rights which vary from state/province to state/province.

IMPORTANT

Register Your Kraus Product

Activate Your Warranty

Access Premium Customer Support

Get Product Information

REGISTER TODAY

<http://www.kraususa.com/registration>



Kräus
www.kraususa.com