

# Double-headed Floor Lamp

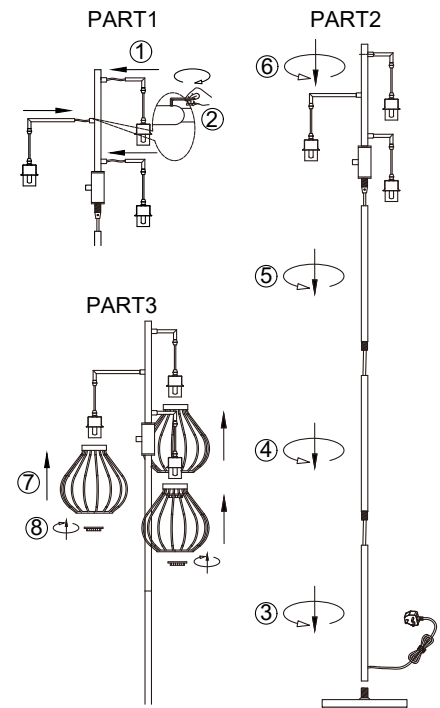


## BEFORE YOU BEGIN .....

- Unpack all components onto a flat surface that will not damage them or allow them to become dirty
- Check that all components are correct and present
- Familiarise yourself with the product, its component parts and how it is assembled.
- Keep all packaging until after a successful installation and retain the instructions for future reference

## SAFETY NOTES:

- This product is intended for indoor use only
- Ensure that the lamp is used on a flat stable surface and that the cable is sited in a way that will not cause a tripping hazard
- Do not allow the lamp to be covered, ensure that curtains, drapes etc. do not cover the lamp.



Product Parameter:3\*E27 Max.60W 220-240V 50HZ

**Note:** Dimmer switch- only suitable for dimmable bulbs

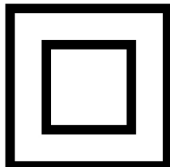
## ASSEMBLY INSTRUCTIONS:

- Remove any additional packaging (end protectors etc.)
- Screw the column sections together, taking care not to cross the threads.
- Screw the top section in place, taking care not to cross the threads.
- Position the reading light section at the optimum reading height.
- Secure the cable into place along the column using the clips provided.
- Unscrew the shade retaining skirt and fit the shade.
- Secure the shade with the retaining shade ring.
- Fit the bulb (not supplied), do not exceed the wattage stated on the lampholder or shade (whichever is the lower wattage), also suitable for use with energy saving bulbs and LED bulbs.
- Insert the plug into the wall outlet and switch on at the wall socket.
- Always switch off and allow the bulb to cool before replacing the bulb.

## CARE & USE:

- Only clean with a clean dry cloth, to prevent damage to the plated / painted finish.
- If the external cable or cord becomes damaged, it shall be replaced by the manufacturer, its service agent or similar qualified person to prevent a hazard.

IF IN DOUBT ABOUT FITTING THIS PRODUCT, PLEASE CONSULT A QUALIFIED ELECTRICIAN



**WARNING:**  
Before proceeding, make sure the electricity is switched OFF and the electricity is switched OFF at the mains supply board

