

INSTALLATION MANUAL

IMPORTANT SAFETY INSTRUCTIONS

When using an electrical furnishing, basic precautions should always be followed ,including the following:

⚠ WARNING: To reduce the risk of burns,fire,electric shock or injury to persons. Use this furnishing only for its intended use as described in these instructions. Do not use attachments not recommended by the manufacturer. Never drop or insert any object into any opening.Do not use outdoors.

⚠ WARNING: Risk of electric shock.Connect this furnishing to a properly grounded circuit only. See grounding instructions.

ELECTRIC CONNECTIONS

ALL WIRING SHOULD BE DONE BY A QUALIFIED LICENCED ELECTRICIAN.

⚠ WARNING: Shut off power before wiring.
Requires 120 VAC 20 Amp GFI protected Circuit.

GROUNDING INSTRUCTIONS:

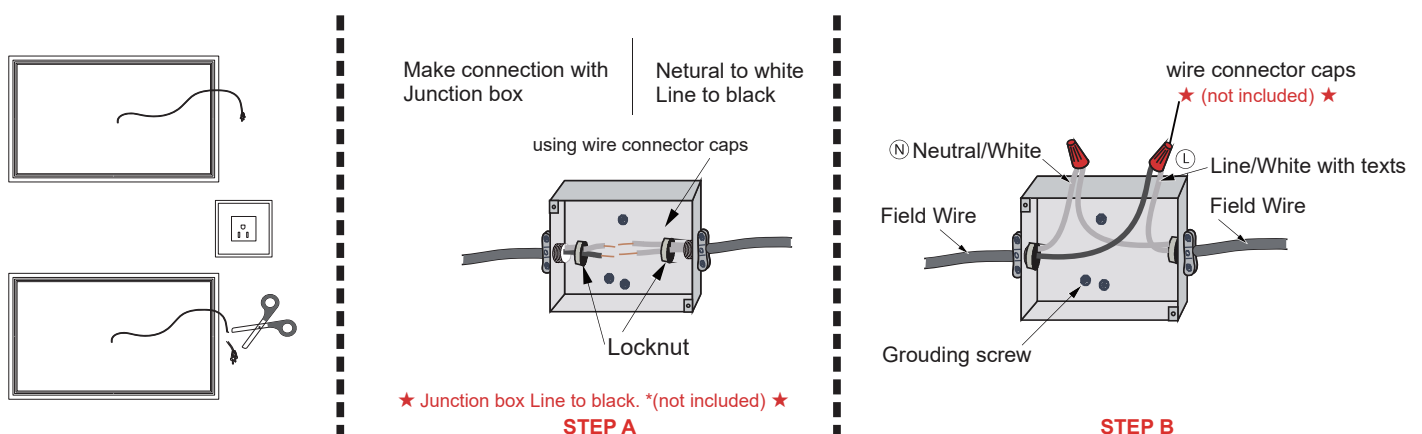
⚠ CAUTION: This product must be connected to a grounded metal permanent wiring system or an equipment-grounding conductor must be run with the circuit conductors and connected to the equipment grounding terminal or lead on the product.

⚠ WARNING: An Electrical option mirror must be wired to a 20 Amp GFI(Ground Fault Interrupter) protected circuit when used in bathrooms and all other locations required by the National Electric Code.

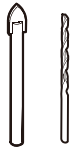
HOW TO CONNECTIONS

If there is a suitable socket on the wall, plug in the mirror's own plug and you can use the electric functions.

If a cord is reserved on the wall behind the hanging mirror, please cut off the plug of the wire on the mirror and connect them according to steps A and B.



HARDWARE AND TOOLS



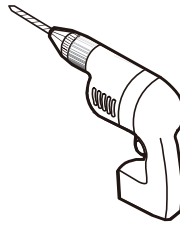
1/4" & 1/8" Drill Bits



Pencil



Level



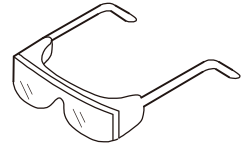
Power Drill



Mallet

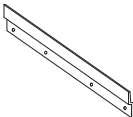


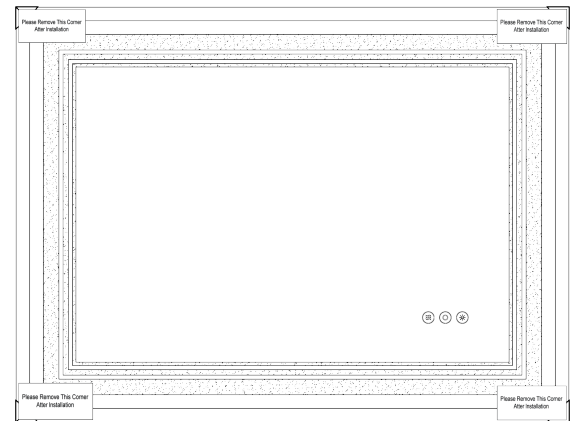
Tape Measure



Safety Goggles

HARDWARE LISTS

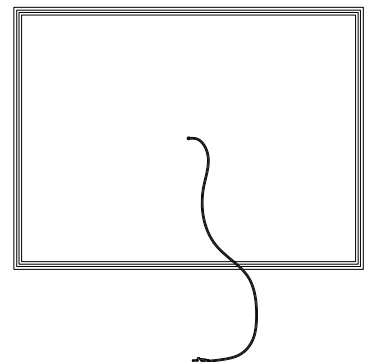
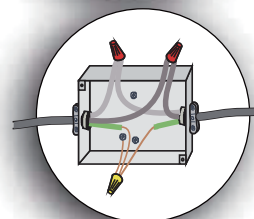
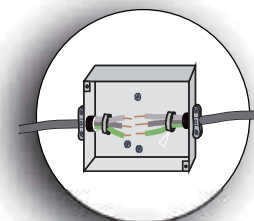
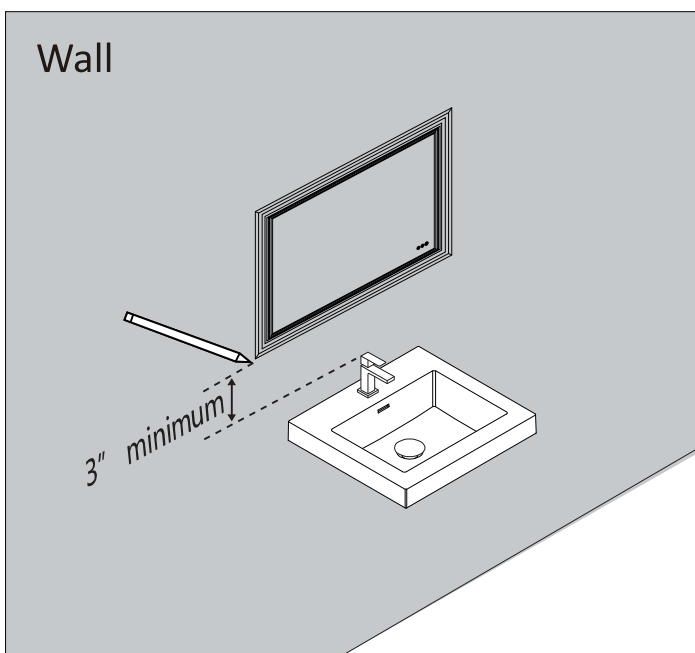
ITEM	IMAGE	NAME
①		Screw ST4*35
②		Wall Anchor
③		Aluminum Alloy Plate



Please remove the 4 corner protectors after installation

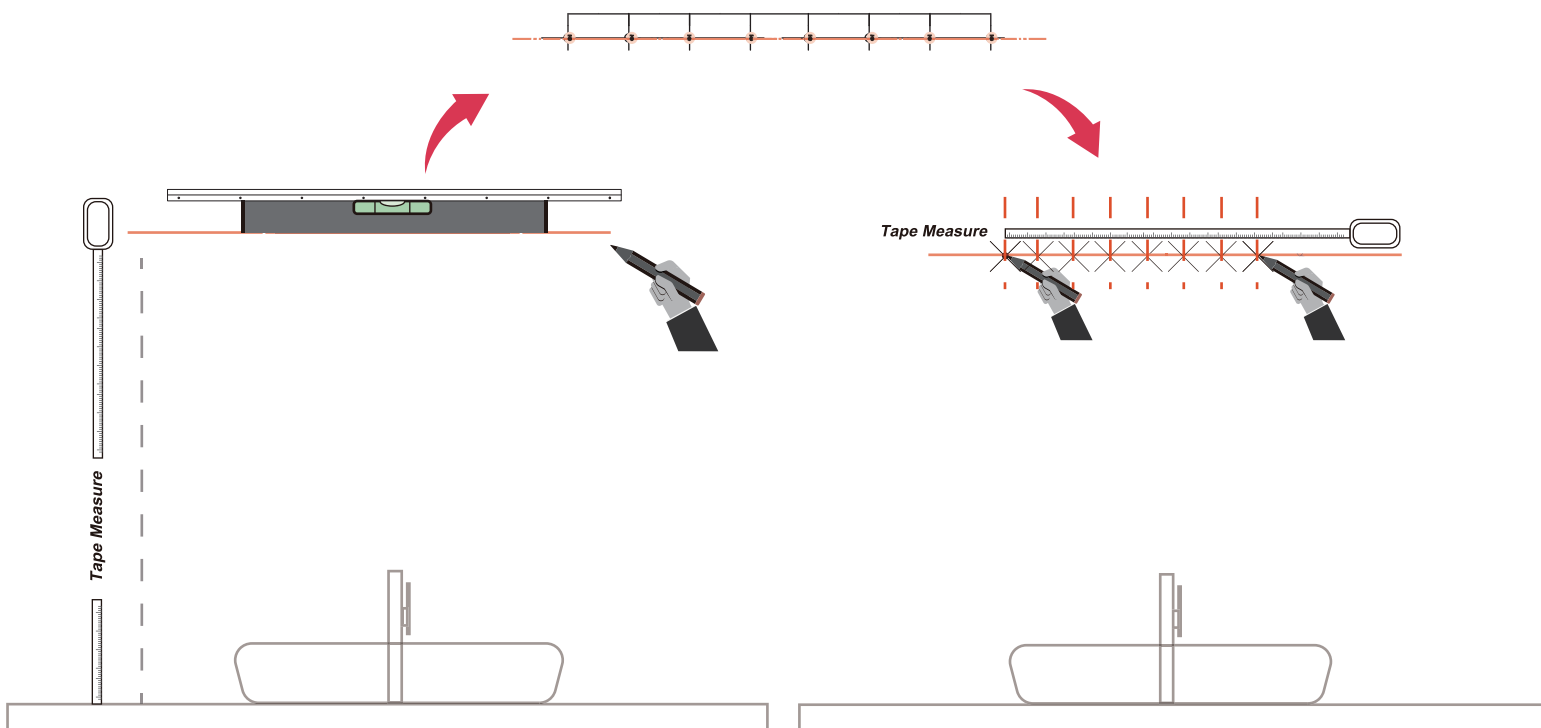
Step 1

Level and mark the mirror's location on the wall.



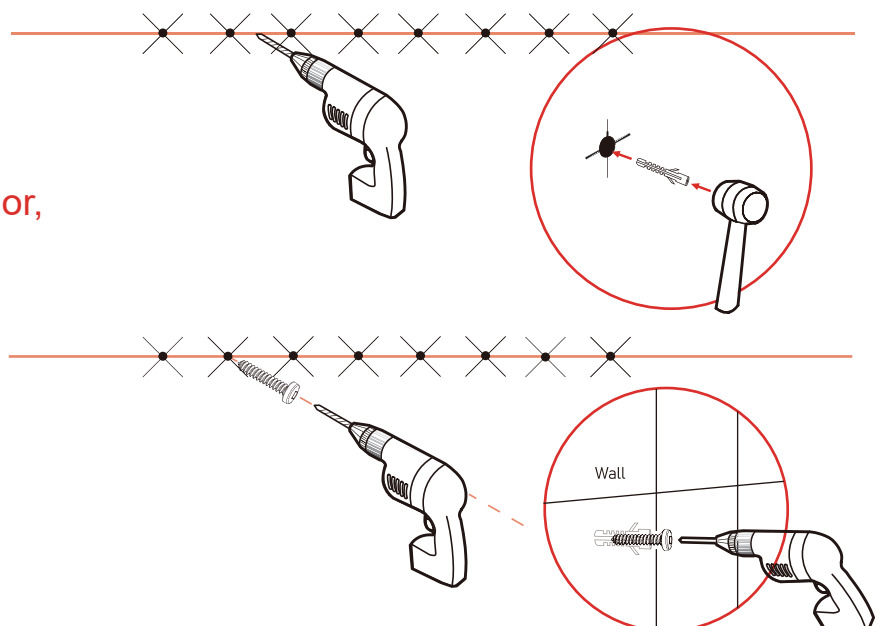
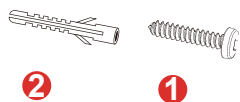
Step 2

Use the tape measure the height, and draw the horizontal, line and the vertical line of the wash-basin. Measure the distance of the mirror hole, and mark the hole place on the wall.



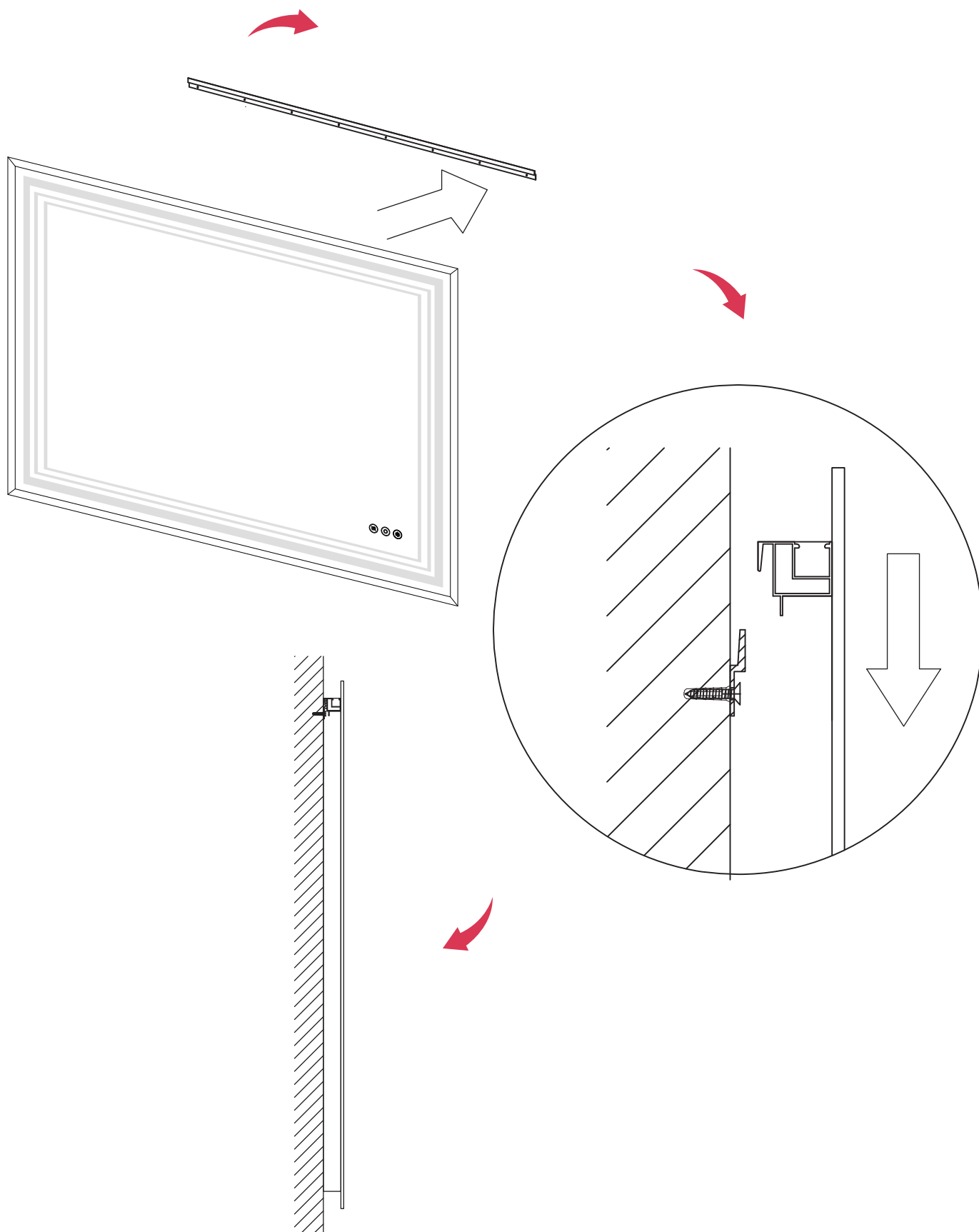
Step 3

Drill and insert the Wall Anchor,
Drive in the screw cross the
bottom support.

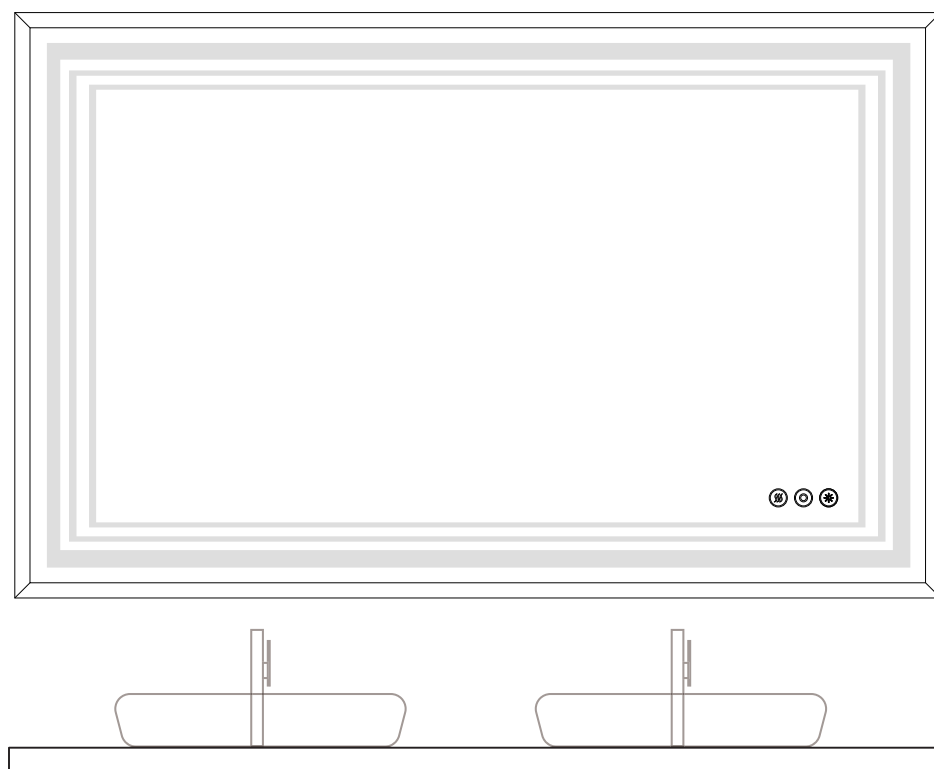


Step 4

Align the top hanging structure of the frame on the back of the mirror with the Aluminum Alloy Plateon which have been mounted on the wall, and hang them to complete the installation.



Introduction of Touch Function



After power on, the button shows white and it is in waiting stage,
click to turn on the light function and the button turn on yellow.
Click again to turn off the light function and the button to turn to white.

LED



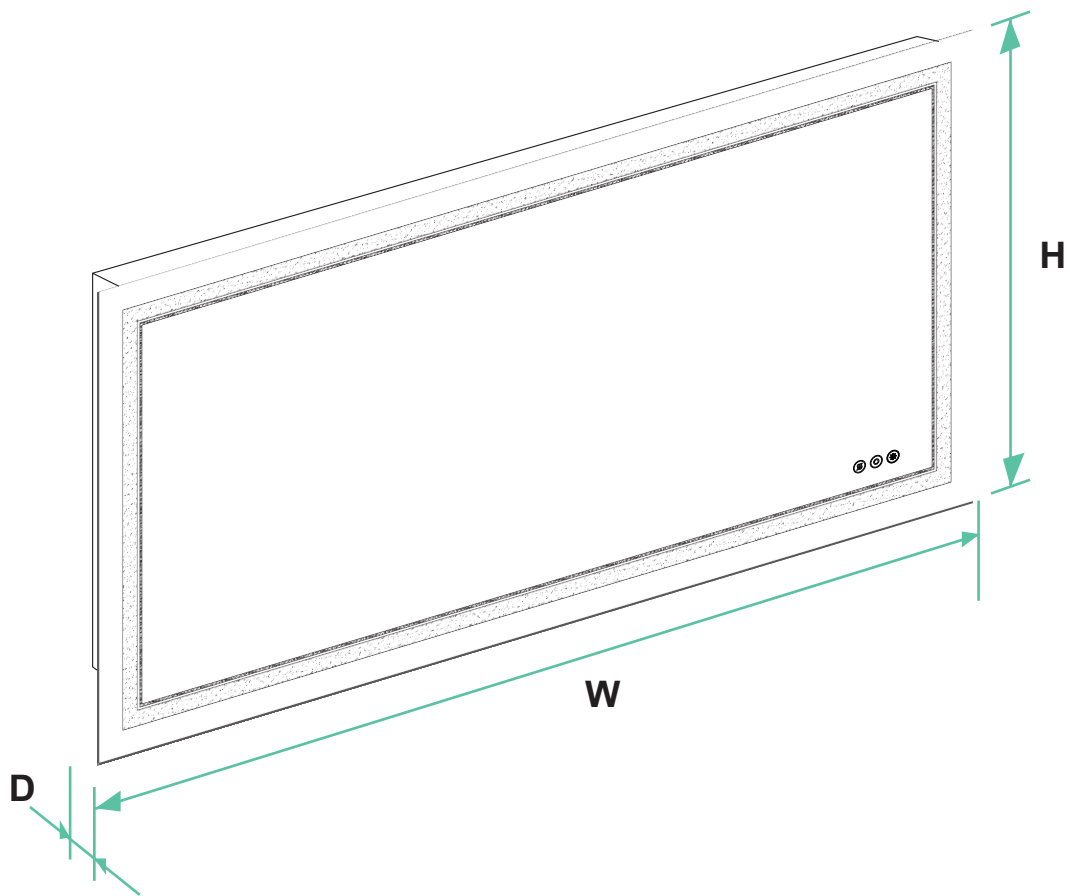
Long click the button to make the light gradually dims
Click the button again and the light gradually brightens



After power on, the button shows white and it is in waiting state,
click to turn on the defogging function and the button turn on yellow.
Click again to turn off the defogging function and the button to turn to white.



After power on, the button shows white and it is in waiting state,
click to turn on the light function and the white turn on yellow.
Long press to switch the color temperature of light by 3k-yellow, 4k-natural or 6k-cold white



W - Mirror's Width
H - Mirror's Height
D - Mirror's Depth

Unit: Inch

SIZE	W	H	D
24*32	24	32	1.6
40*24	40	24	1.6
48*32	48	32	1.6
60*36	60	36	1.6
72*36	72	36	1.6

Note: All dimensions & specifications are approximate and subject to change without notice.