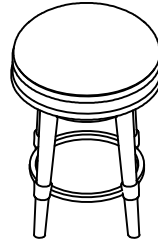


ASSEMBLY INSTRUCTIONS



181-690

TOOLS REQUIRED:

Allen Wrench (Provided, Part E)

BEFORE YOU START:

1. Check the hardware against the hardware list to make sure all items are present.
2. Assemble your furniture on a soft, flat surface to avoid scratching the finish.
3. **CAUTION:** Do not over tighten screws, nuts or bolts during assembly.
4. Your furniture may require occasional tightening.

INSTRUCTIONS:

1. Turn the bar seat upside down on a clean soft surface.
2. Attach 3 legs to the seat frame and tighten Bolt (B) with Lock Washer (C) and Flat Washer (D) by Allen Wrench (E) as shown in Figure 1.
3. Attach the bottom frame to the leg and tighten Bolt (A) by Allen Wrench (E) as shown in Figure 2.
4. Attach the fourth legs to the seat frame and tighten Bolt (B) with Lock Washer (C) and Flat Washer (D) by Allen Wrench (E) as shown in Figure 3.
5. Tighten the fourth leg and bottom frame with Bolt (A) by Allen Wrench (E) as shown in Figure 4.

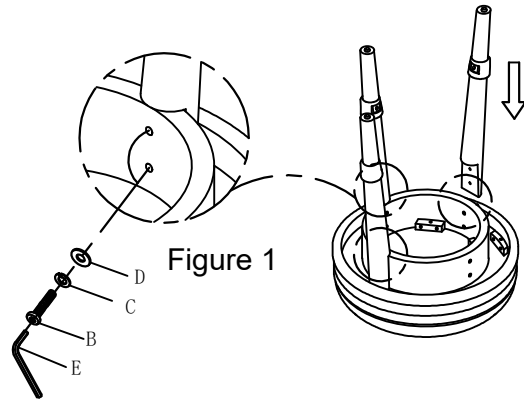


Figure 1

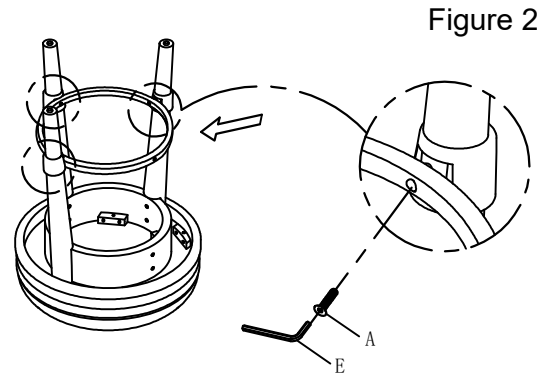


Figure 2

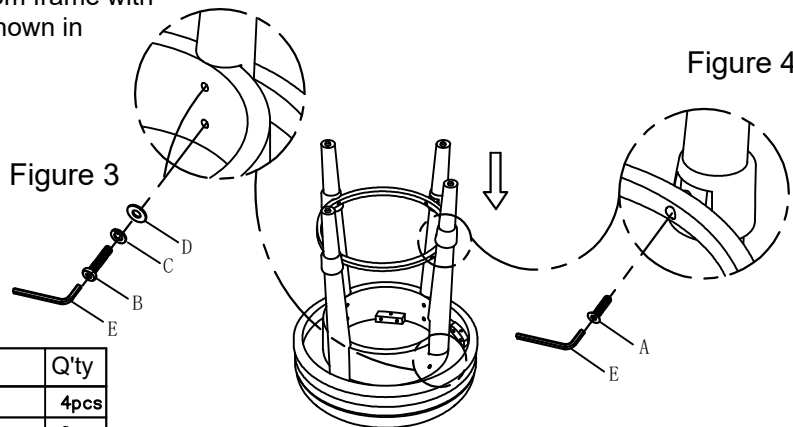







Figure 3

Figure 4

No.	HARDWARE LIST		Q'ty
A		Bolt (Ø1/4"x1-1/4")	4pcs
B		Bolt (Ø1/4"x1-3/8")	8pcs
C		Lock Washer (Ø1/4")	8pcs
D		Flat Washer (Ø1/4"*16*1.5mm)	8pcs
E		Allen Wrench (100*50*4mm)	1pc