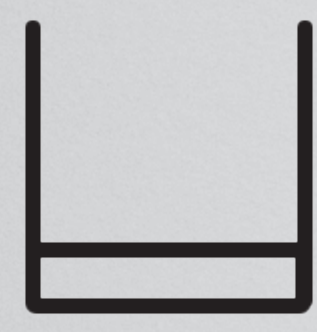


USER'S MANUAL MANUEL DE L'UTILISATEUR



WARNING

1. Assemble by an adult. Install this slide *AWAY* from child.
2. Children must use this product under the guardianship of adults.
3. The age range of this product is 1-5 years old.
4. Only for one child weighing up to 50 kg.
5. Only for domestic use.
6. This activity toy is usually suitable for indoor use or temporary outdoor use.
7. Use only with the mechanism securely engaged. Do not expose the product to direct sunlight for a long time.
8. Keep the assembly and installation instructions for further reference.
9. When the product is damaged, broken or disassembled, stop using the product.
10. It is recommended that the activity toy be placed on a horizontal surface at least 2 meters away from any structure or obstruction such as a fence, garage, house, overhanging branches, laundry lines or electrical wires.
11. The activity toys shall be used over concrete, asphalt or any other hard surface. Do not use in soil that is not hard.
12. Consumers should not modify original activity toys without guidance from the manufacturer or a professional, especially to reduce the number of certain products.
13. This product is not for commercial use and will not carry any warranty for commercial use.

CLEANING INSTRUCTION

Use a soft sponge or cloth with some detergent to scrub the surface of products, and then dry the surface with dry cloth.

MAINTENANCE INSTRUCTIONS

- Regular inspection and maintenance of major components, without which the activity toys may tip over or become hazardous.
- Check the tightness regularly and tighten as required.
- Always check all plastic parts to avoid cracks or abrasion and make sure it is properly fixed when necessary.
- Replace defective parts in accordance with the manufacturer's instructions.

AVERTISSEMENT

- 1.Assemblage par un adulte. Instalez cette diapositive loin de l'enfant.
- 2.Les enfants doivent utiliser ce produit sous la garde d'adultes.
- 3.La tranche d'âge de ce produit est de 1 à 5 ans.
- 4.Uniquement pour un enfant pesant jusqu'à 50 kg.
- 5.Uniquement pour usage domestique.
- 6.Ce jouet d'activité est généralement adapté à l'utilisation intérieure ou à l'utilisation temporaire extérieure.
- 7.N'utilisez que lorsque le mécanisme est correctement engagé. Ne pas exposer le produit à la lumière directe du soleil pendant longtemps.
- 8.Gardez les instructions d'assemblage et d'installation pour référence ultérieure.
- 9.Lorsque le produit est endommagé, cassé ou désassemblé, arrêtez d'utiliser le produit.
- 10.Il est recommandé que le jouet d'activité soit placé sur une surface horizontale d'au moins 2 mètres de toute structure ou obstacle comme une clôture, un garage, une maison, des branches en surplomb, des cordelettes à linge ou des fils électriques.
- 11.Les jouets d'activité doivent être utilisés sur du béton, de l'asphalte ou toute autre surface dure. Ne pas utiliser dans le sol qui n'est pas dur.
- 12.Les consommateurs ne doivent pas modifier les jouets d'activité originaux sans la guidance du fabricant ou d'un professionnel, en particulier pour réduire le nombre de certains produits.
- 13.Ce produit n'est pas destiné à un usage commercial et ne bénéficiera d'aucune garantie pour un usage commercial.

INSTRUCTIONS DE CLINATION

Utilisez une éponge ou un tissu doux avec un détergent pour laver la surface des produits, puis sécher la surface avec un tissu sec.

INSTRUCTIONS DE MAINTENANCE

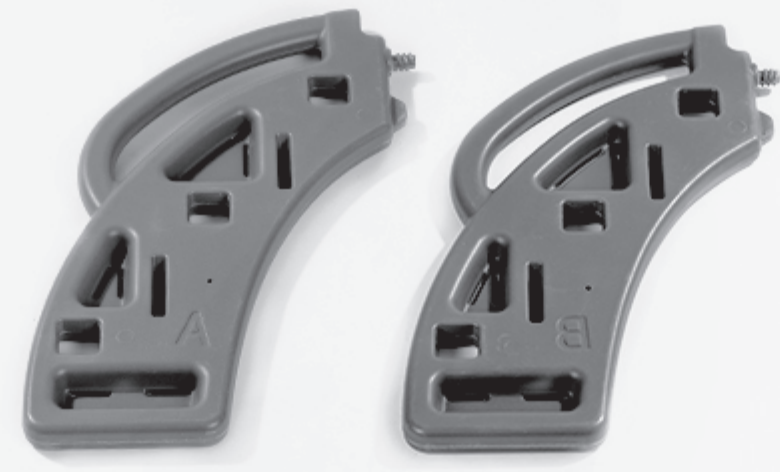
L'inspection et l'entretien réguliers des principaux composants, sans lesquels les jouets d'activité peuvent surmonter ou devenir dangereux.

Contrôle la serrure régulièrement et serrer le cas échéant.

Verifier toujours toutes les parties en plastique pour éviter des fissures ou des abrasions et s'assurer qu'elles sont correctement fixées lorsque nécessaire.

Remplacer des pièces défectueuses conformément aux instructions du fabricant.

WPX-15 Parts List / Liste des pièces



#1X1 (A+B)



#2X3



#3X2



#4X1 (A+B)



#5X1 (A+B)



#6X1



#7X1



#8X1



#9X2



#10X1



#11X1



#12X2



#13X1



#14X1



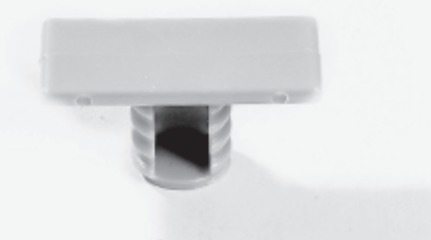
S1X7



S2X2



S3X18



S4X2

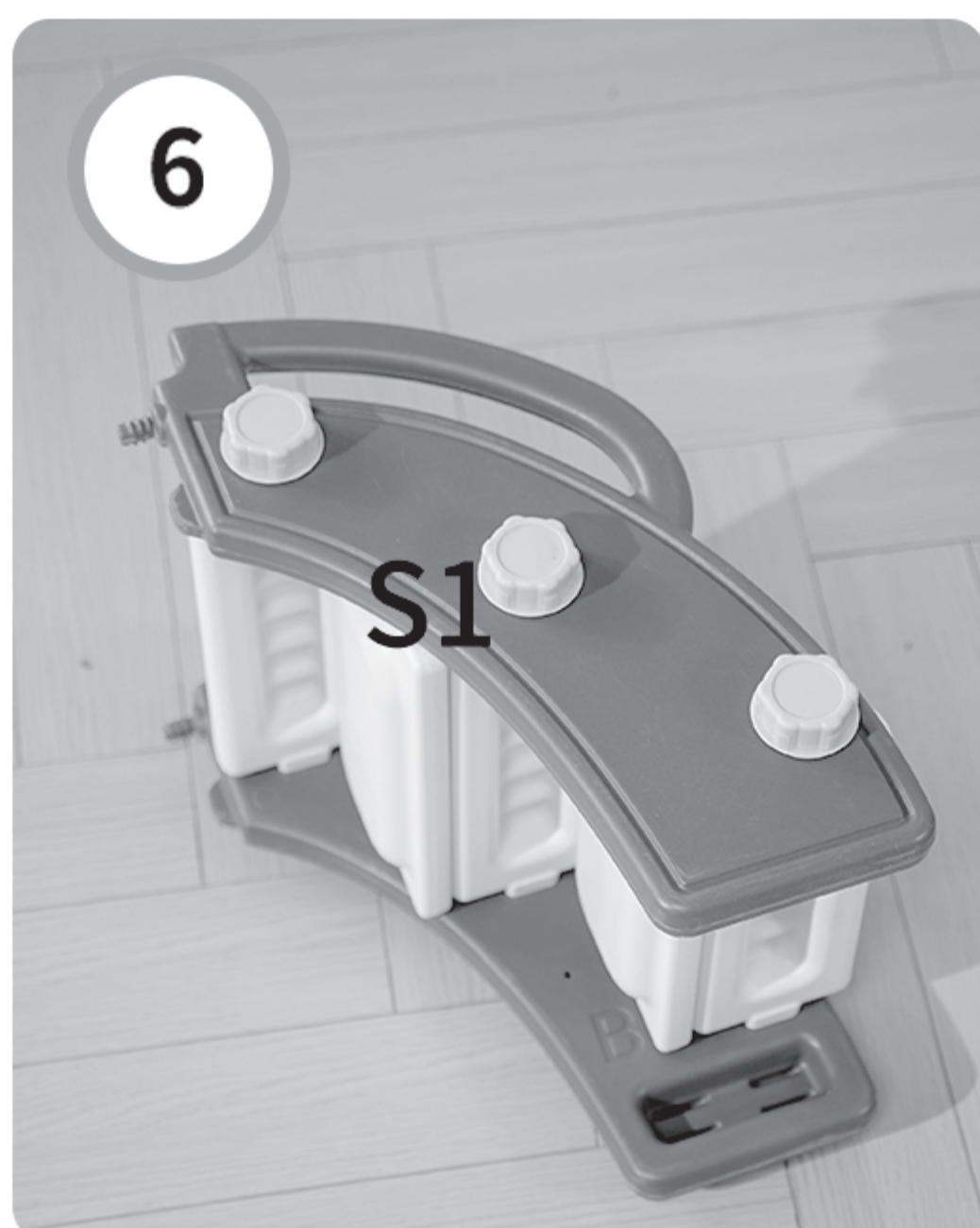
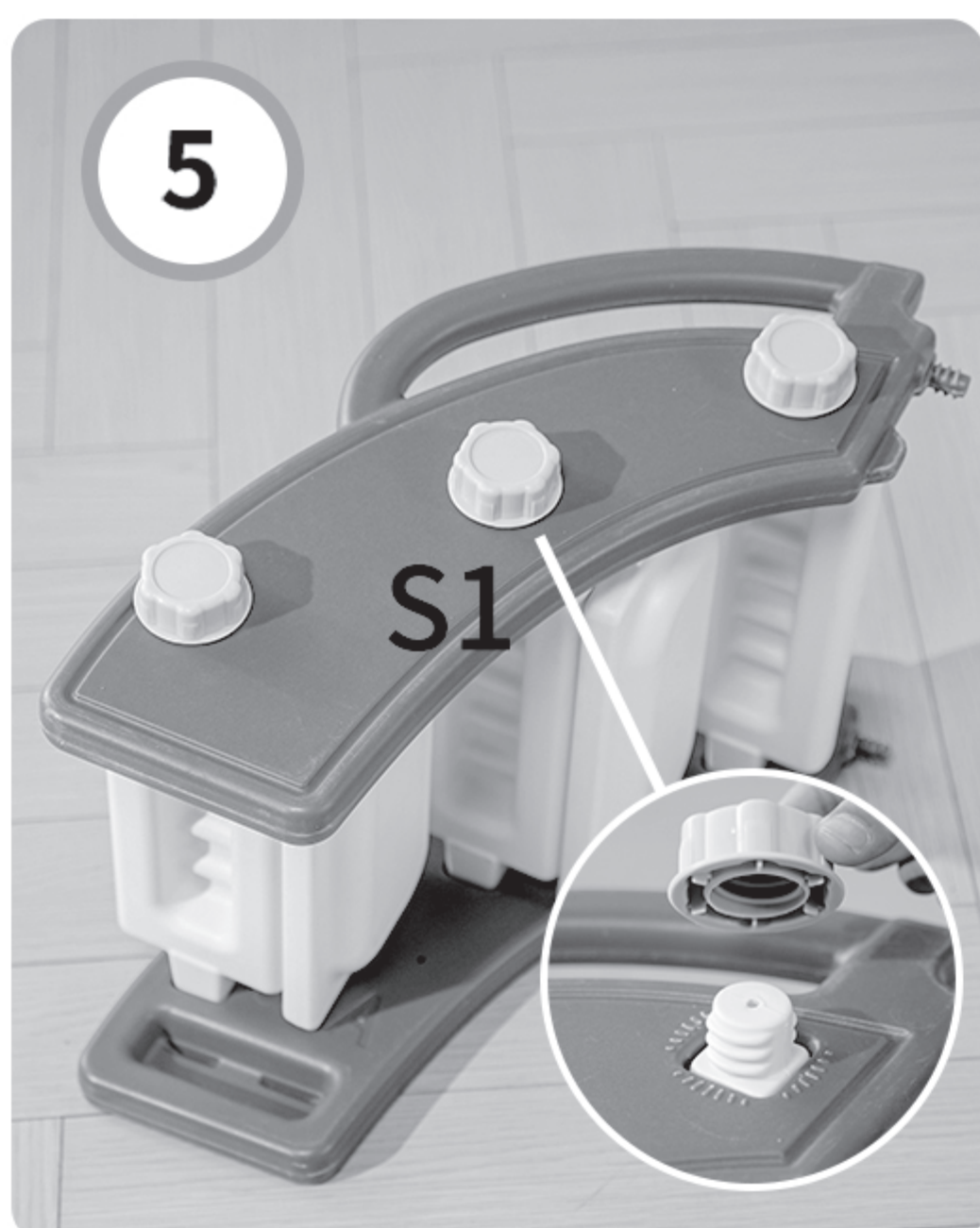
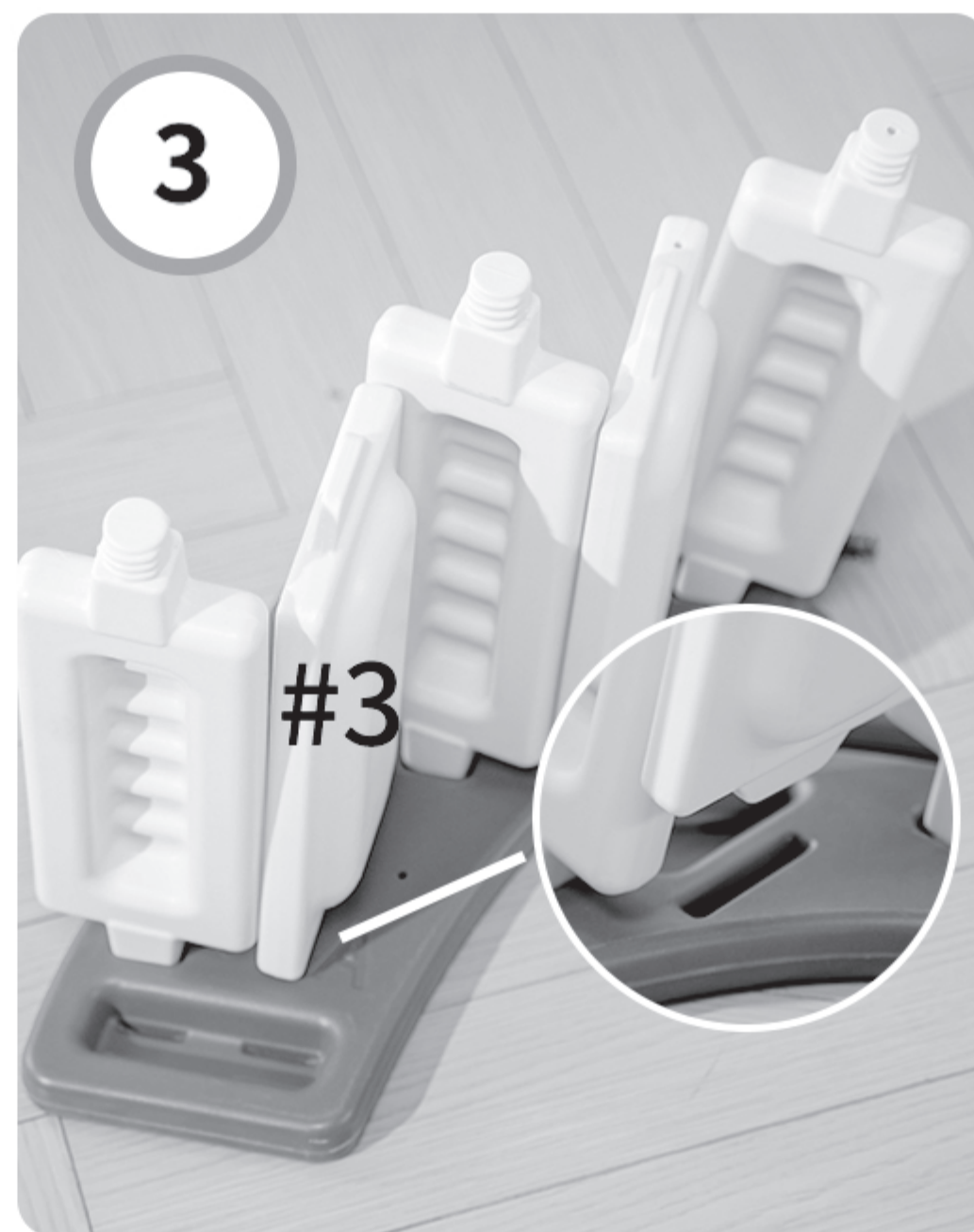
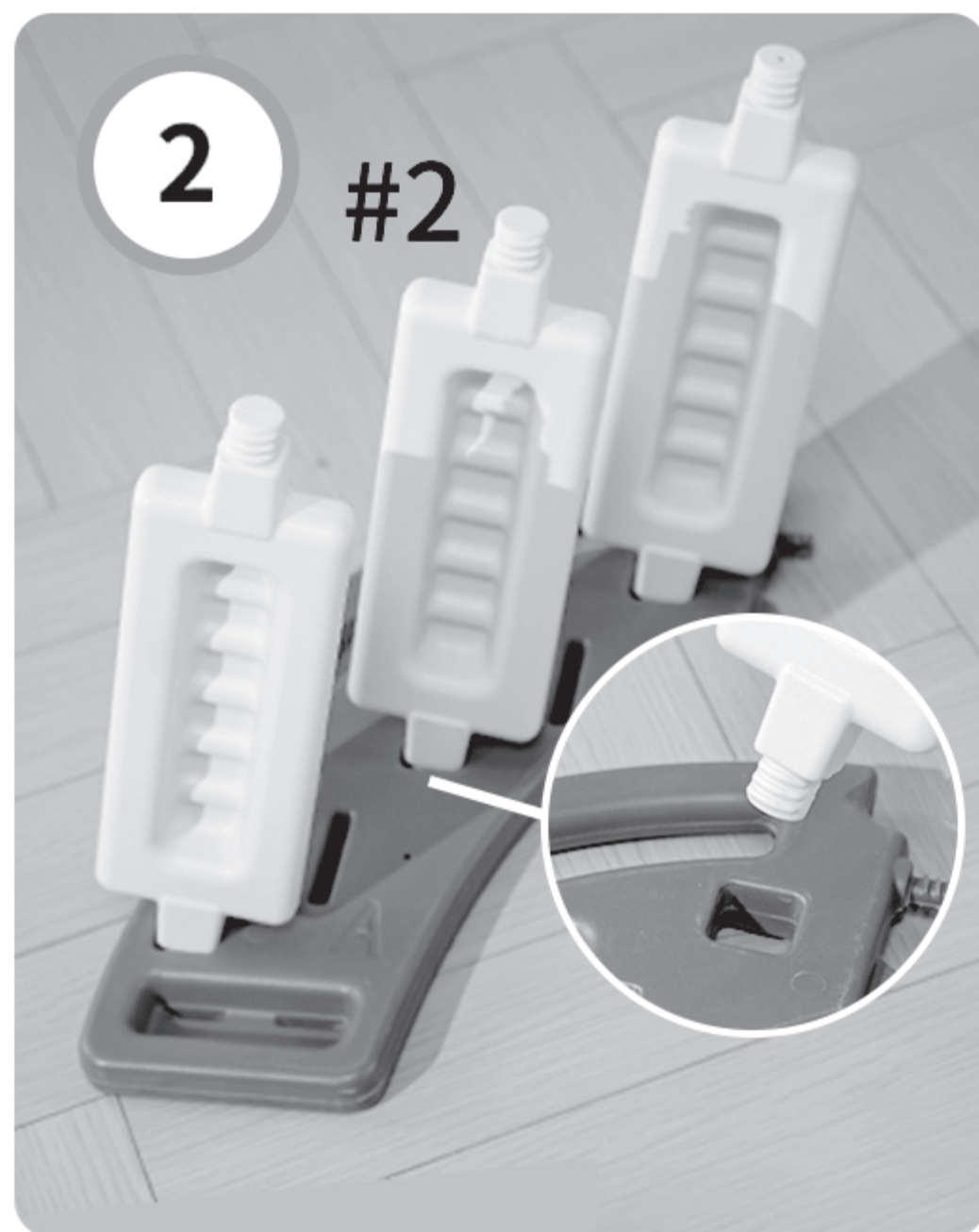
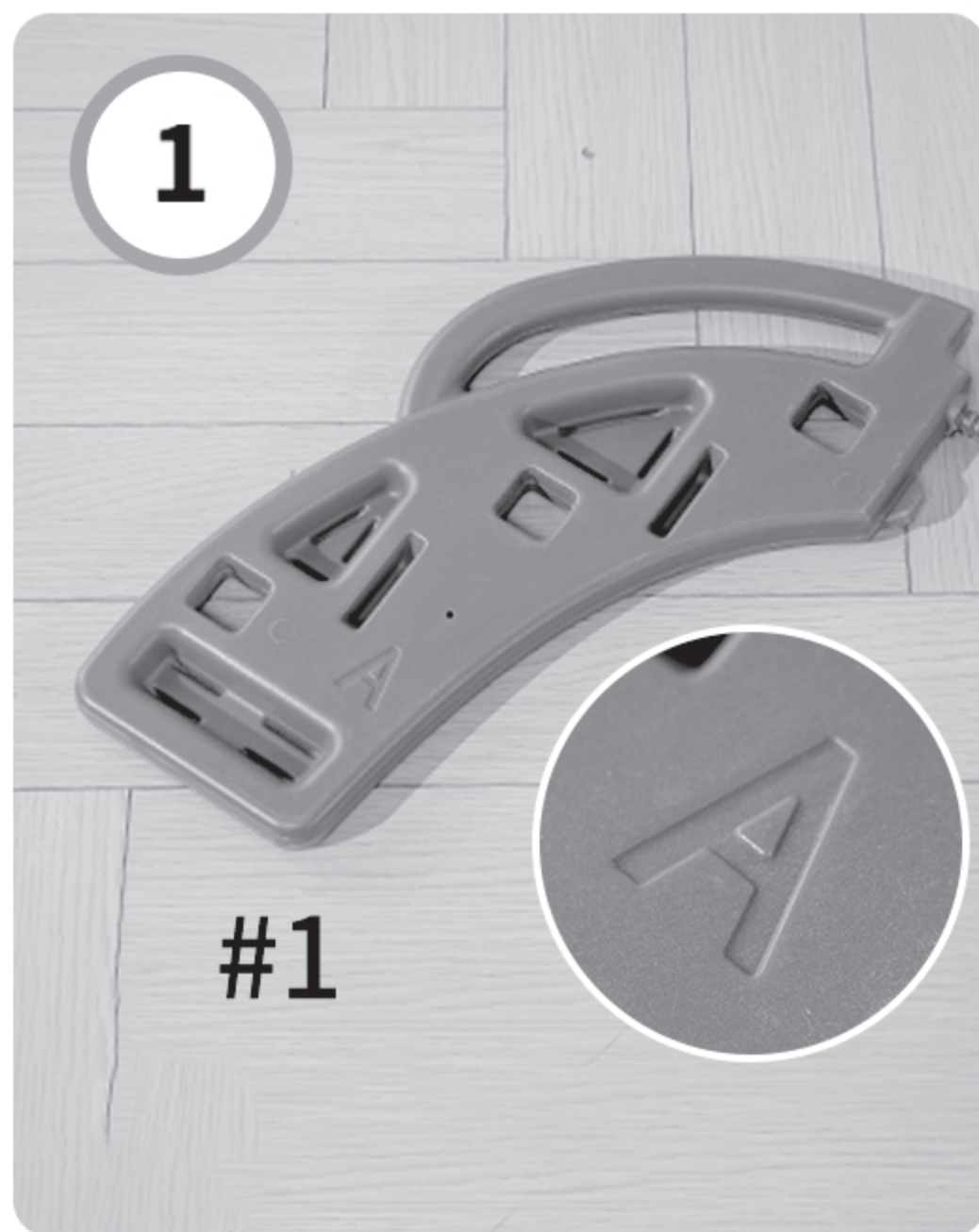


S5X18

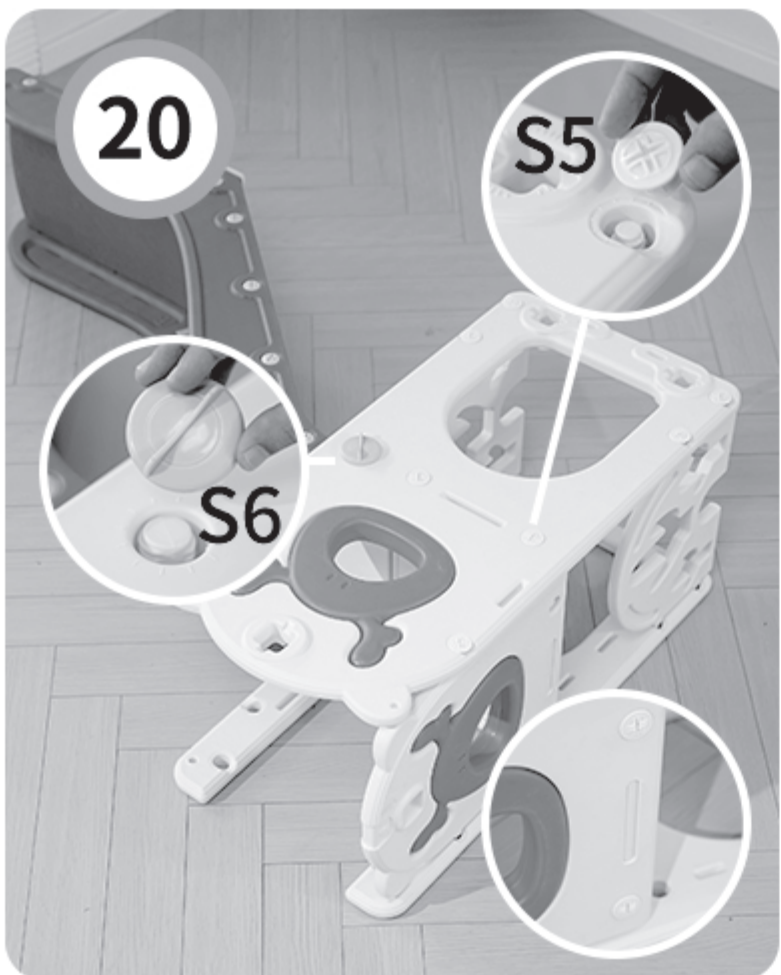
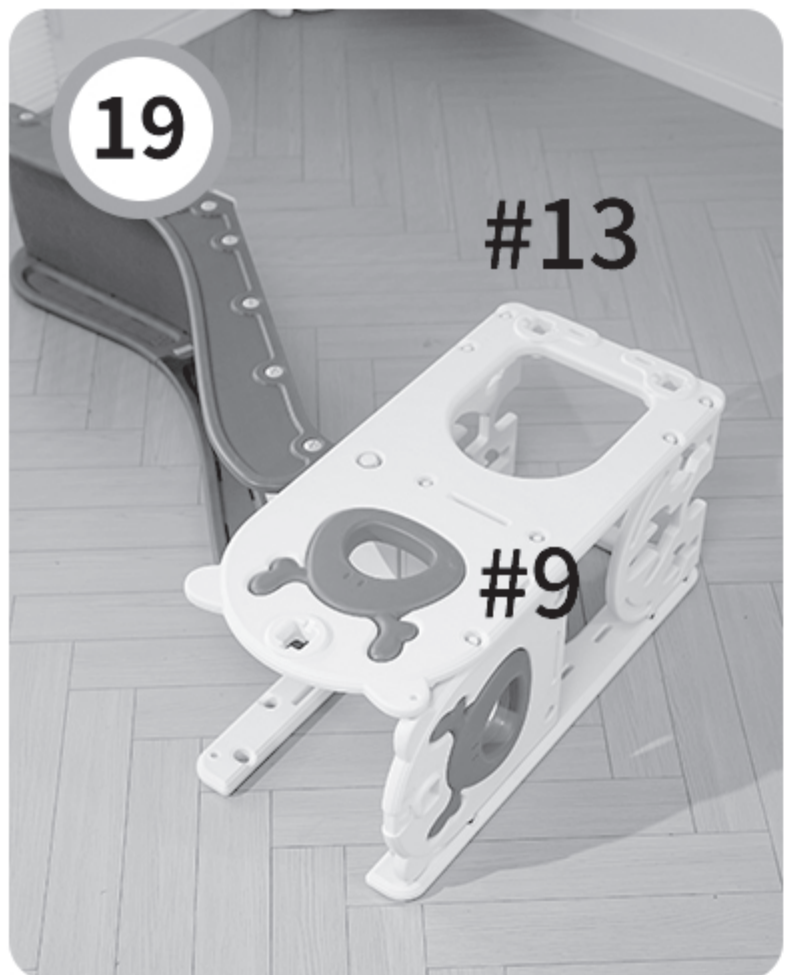
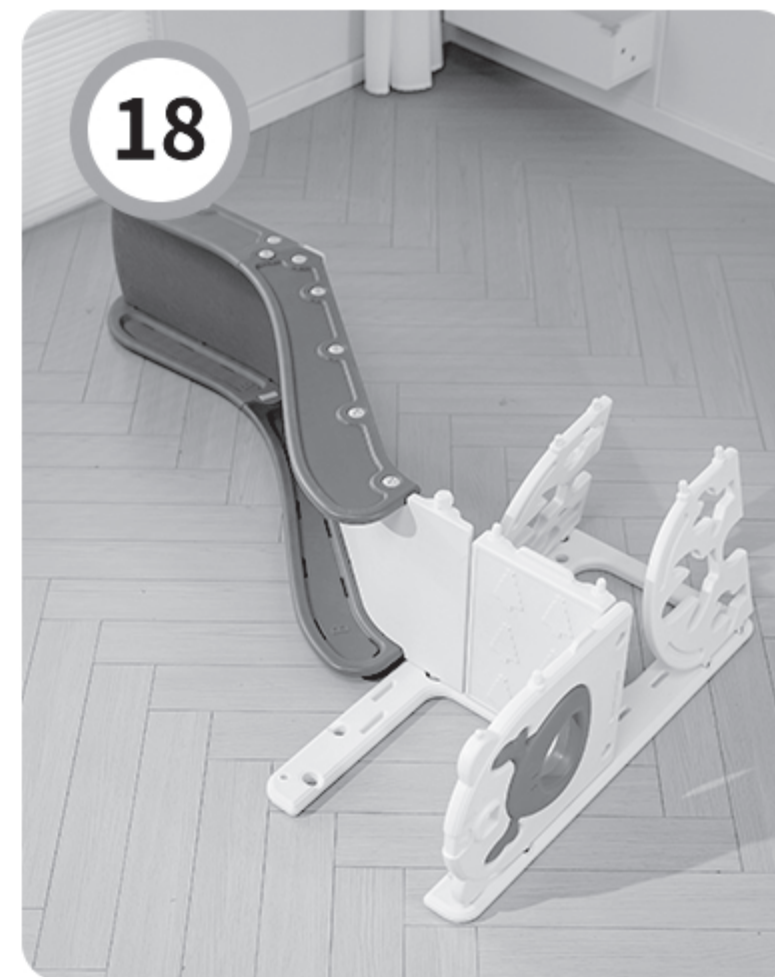
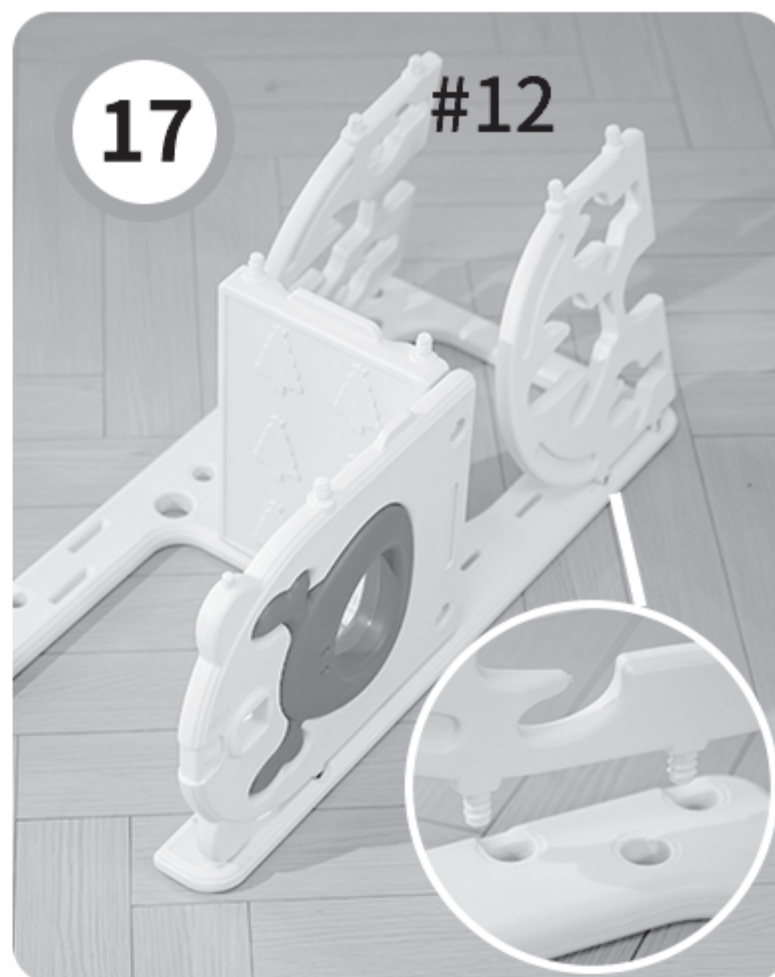
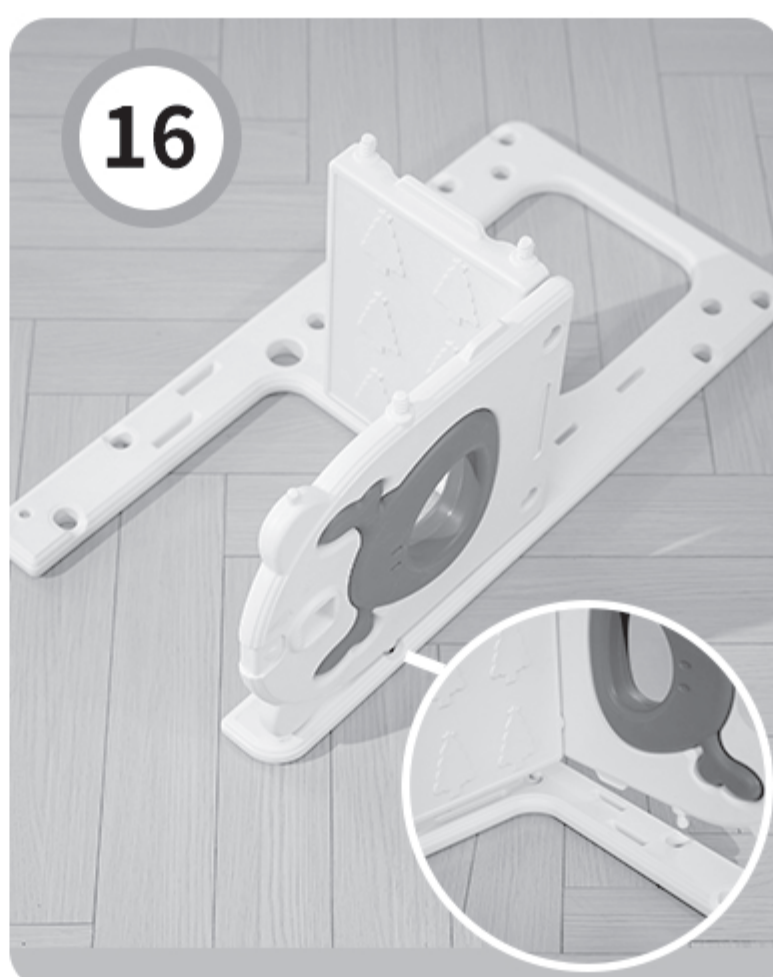
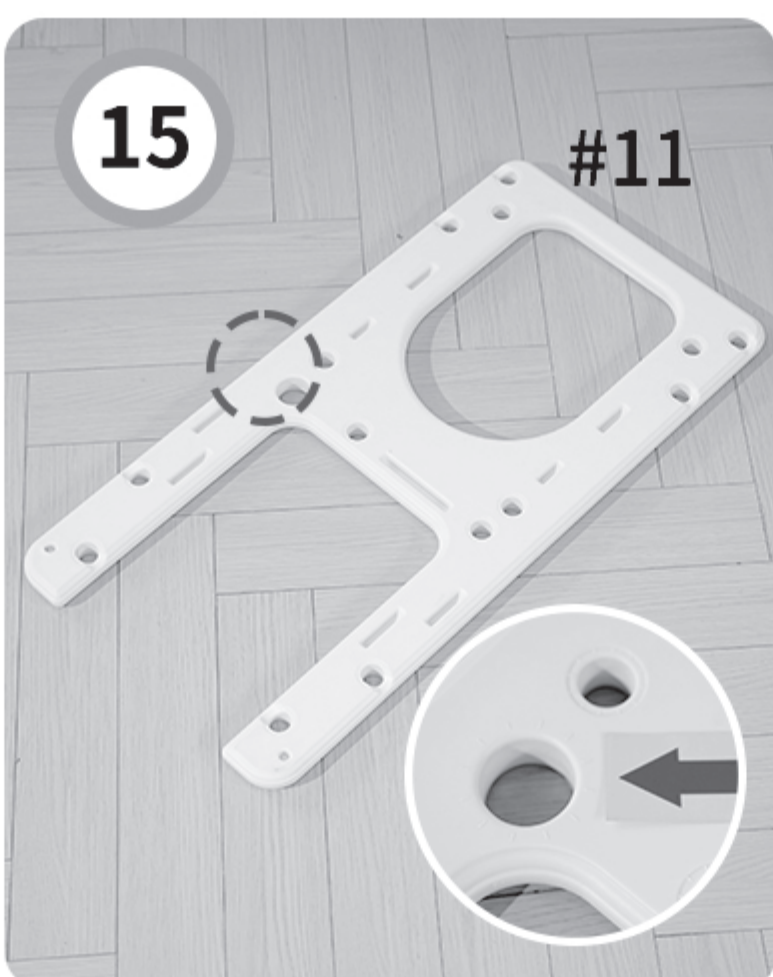
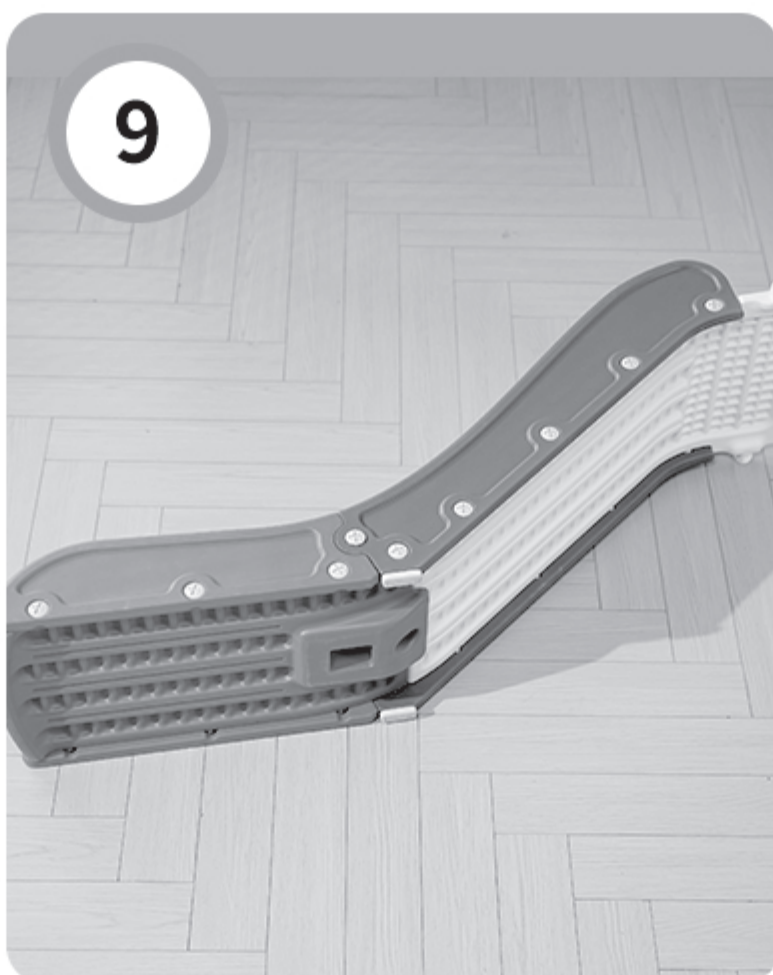
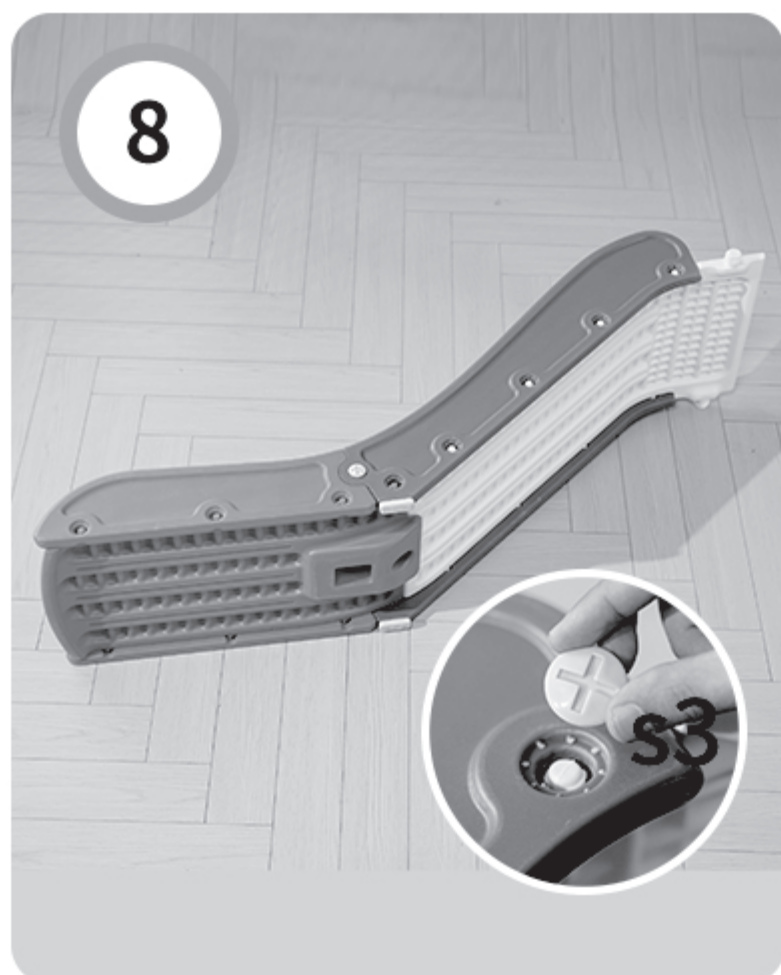
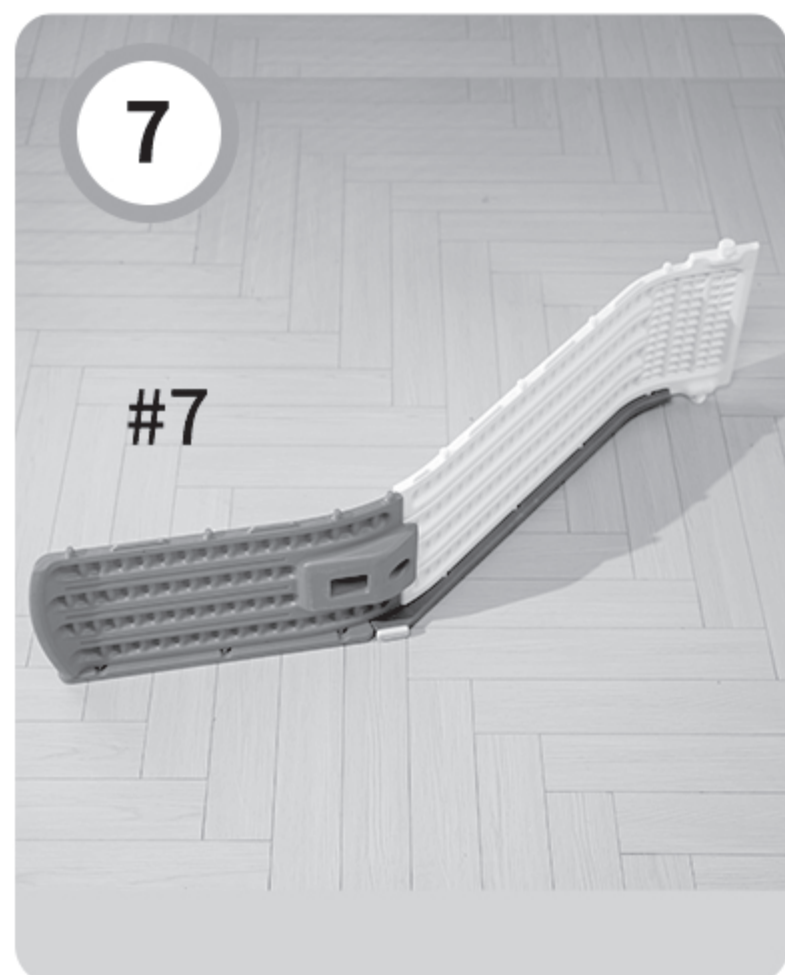
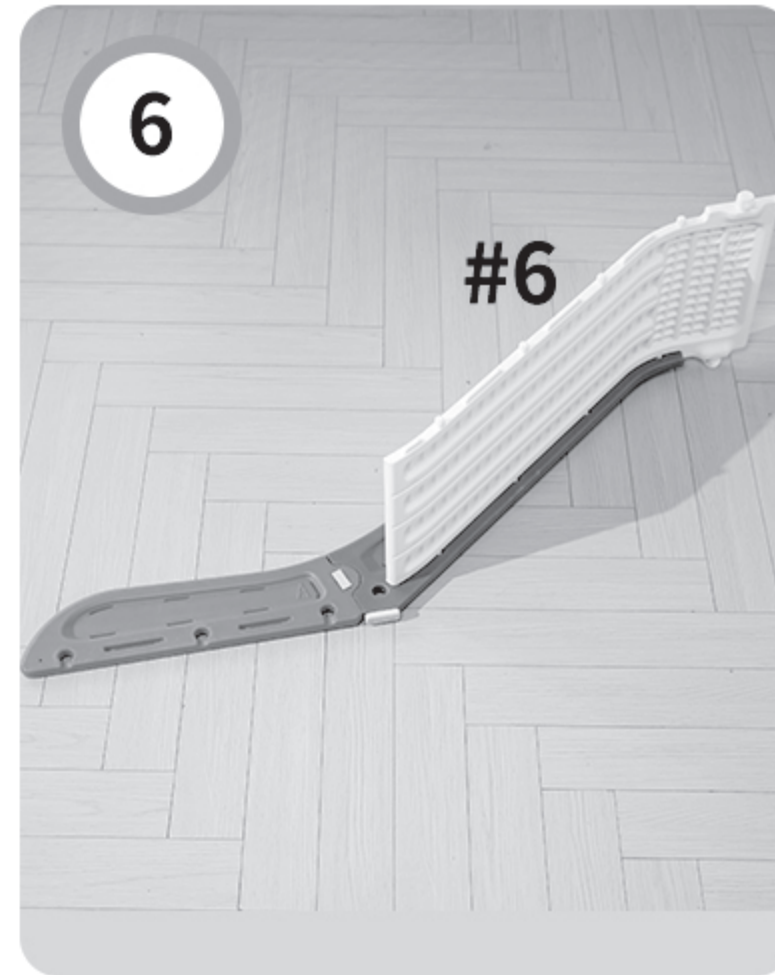
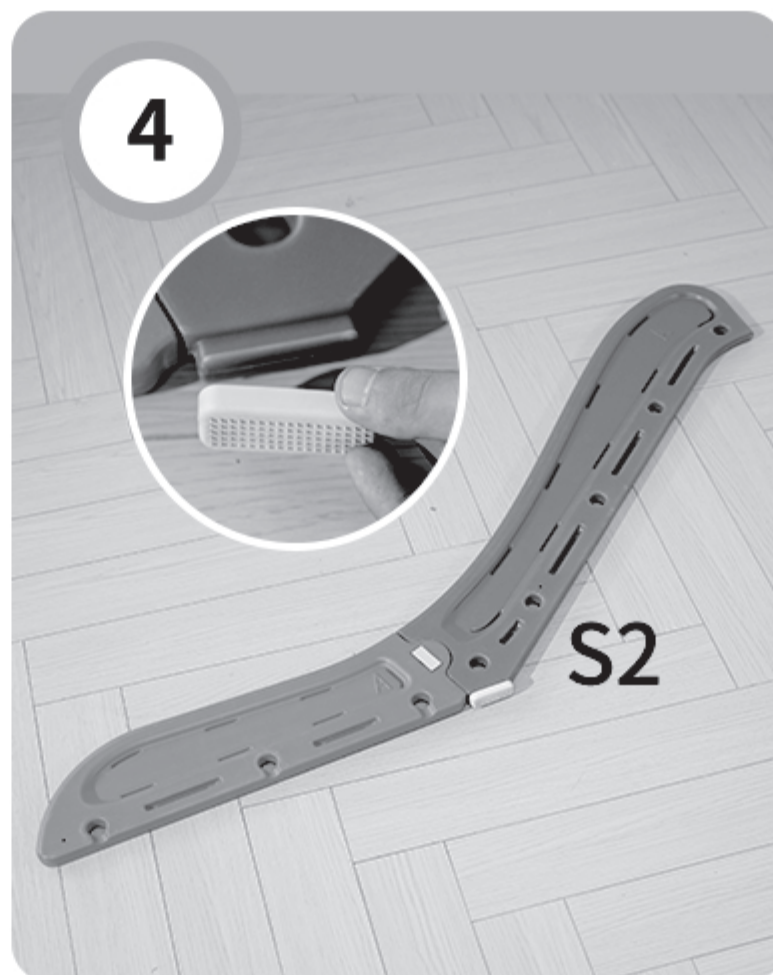
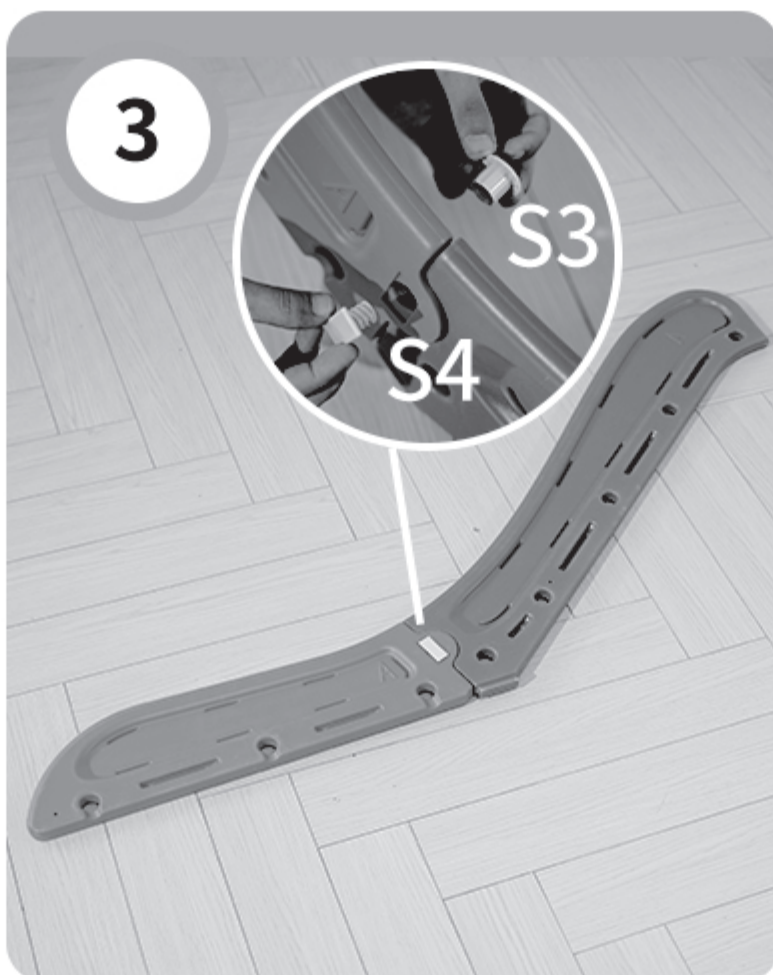
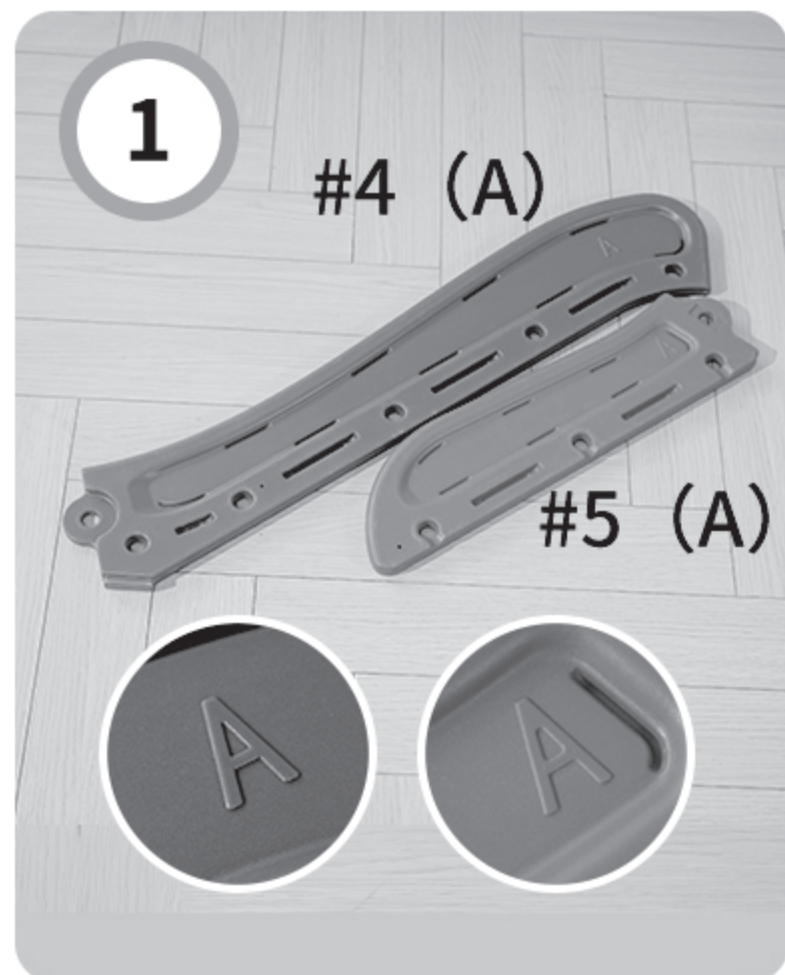


S6X2

Stair installation/Installation d'escaliers



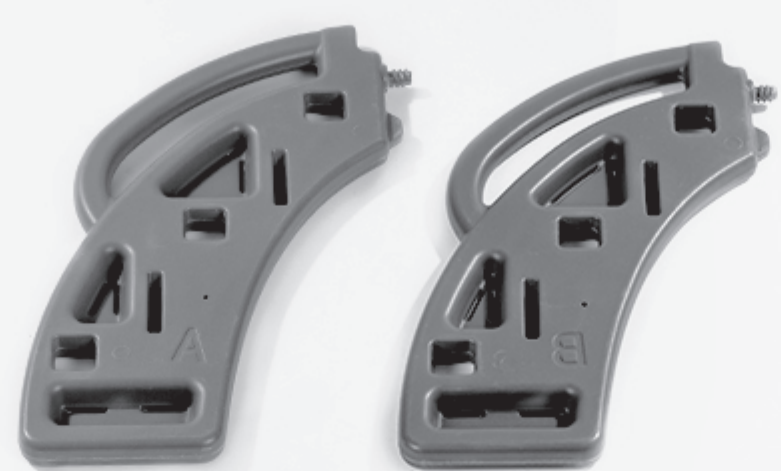
Install the slide waiting area/Installation de la zone d'attente de la glissière



Assembly procedure/Proc é dure d'assemblage



WPX-17 Parts List / Liste des pi è ces



#1X1 (A+B)



#2X3



#3X2



#4X1 (A+B)



#5X1 (A+B)



#6X1



#7X1



#8X1



#9X2



#10X1



#11X2



#12X2



#13X1



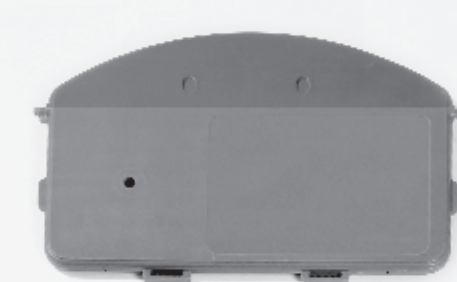
#14X1



#15X2



#16X1



#17X2



#18X1



#19X2 (A+B)



#20X1



#21X1



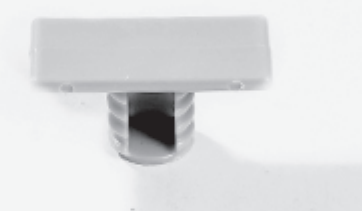
S1X7



S2X2



S3X19



S4X3



S5X32

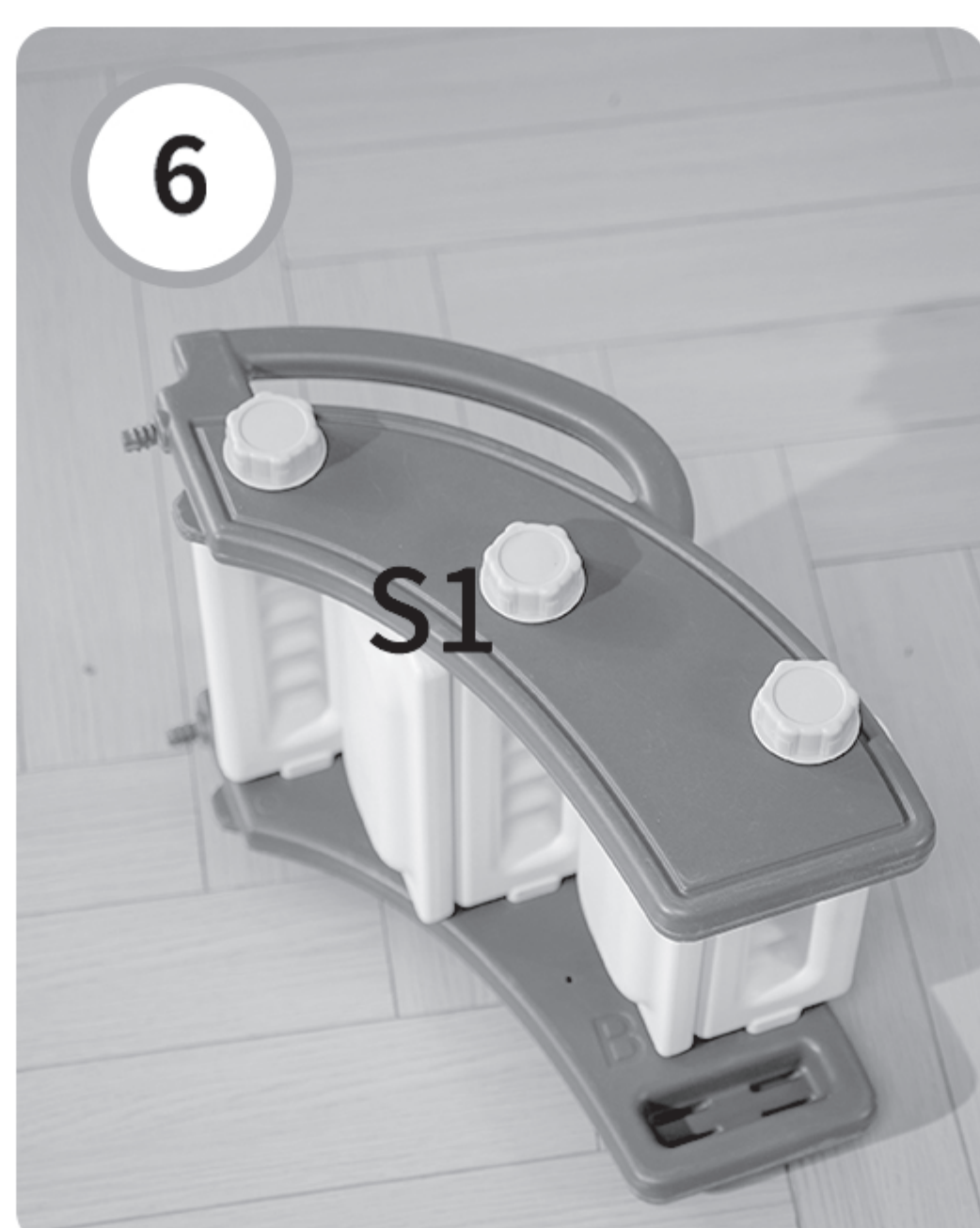
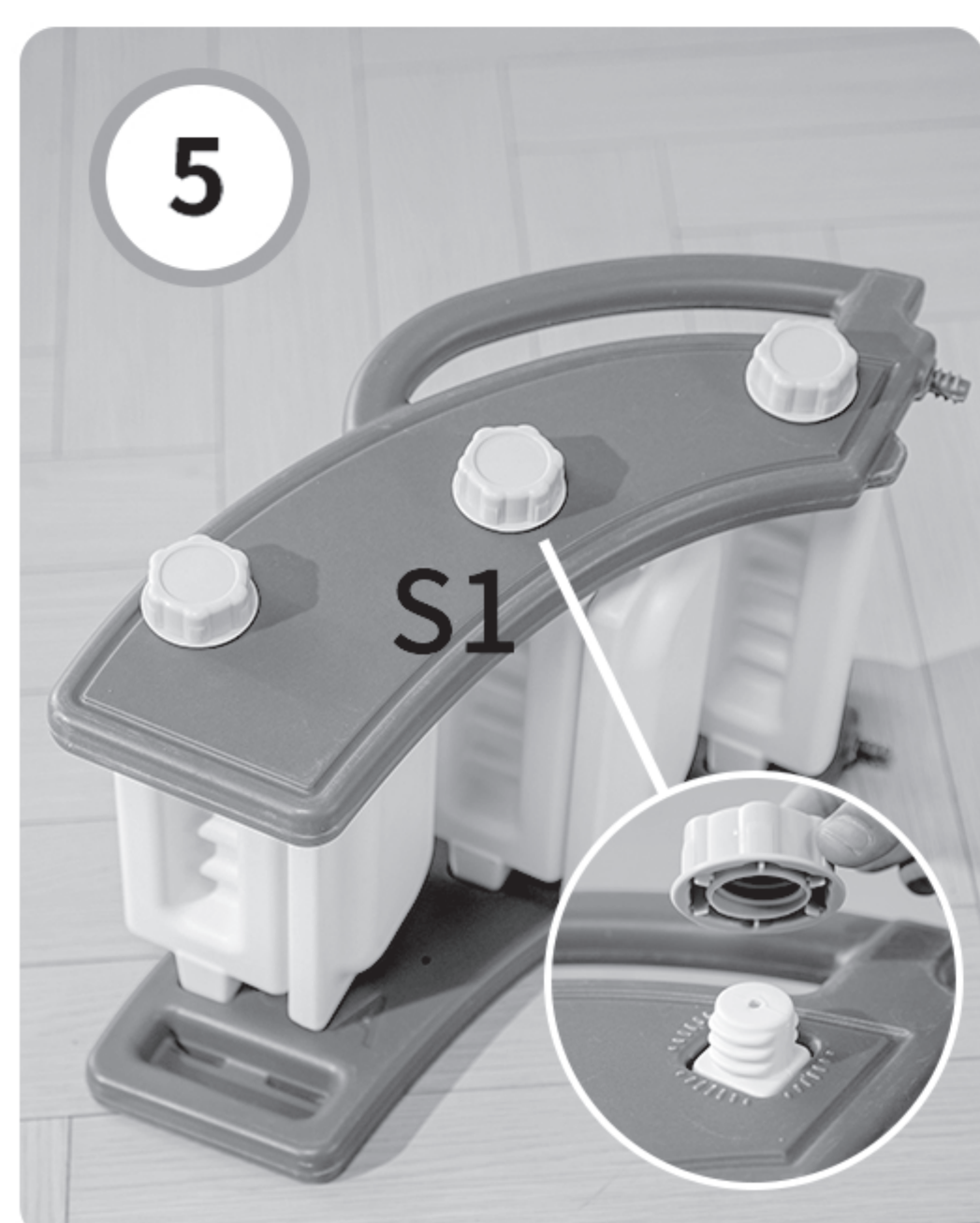
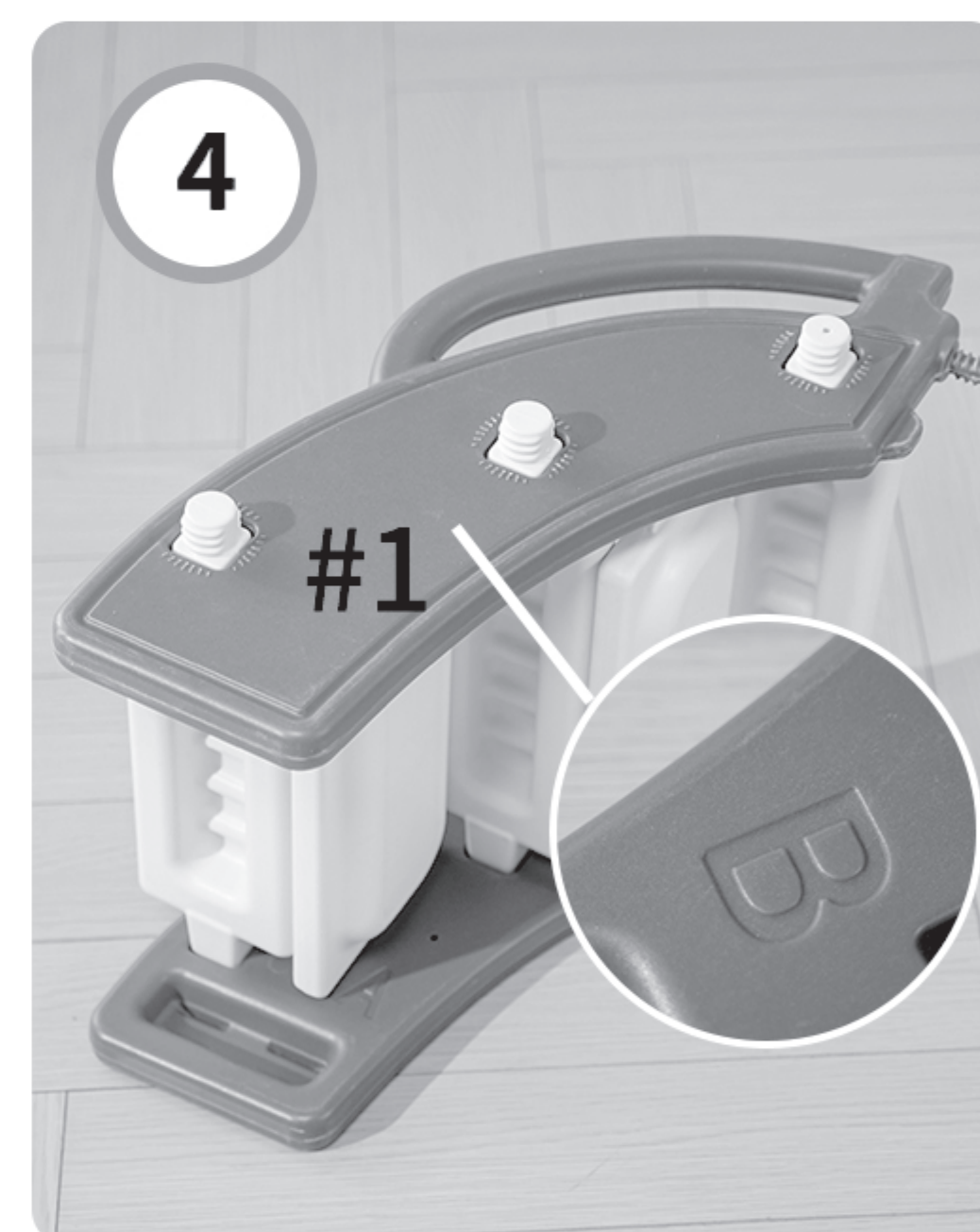
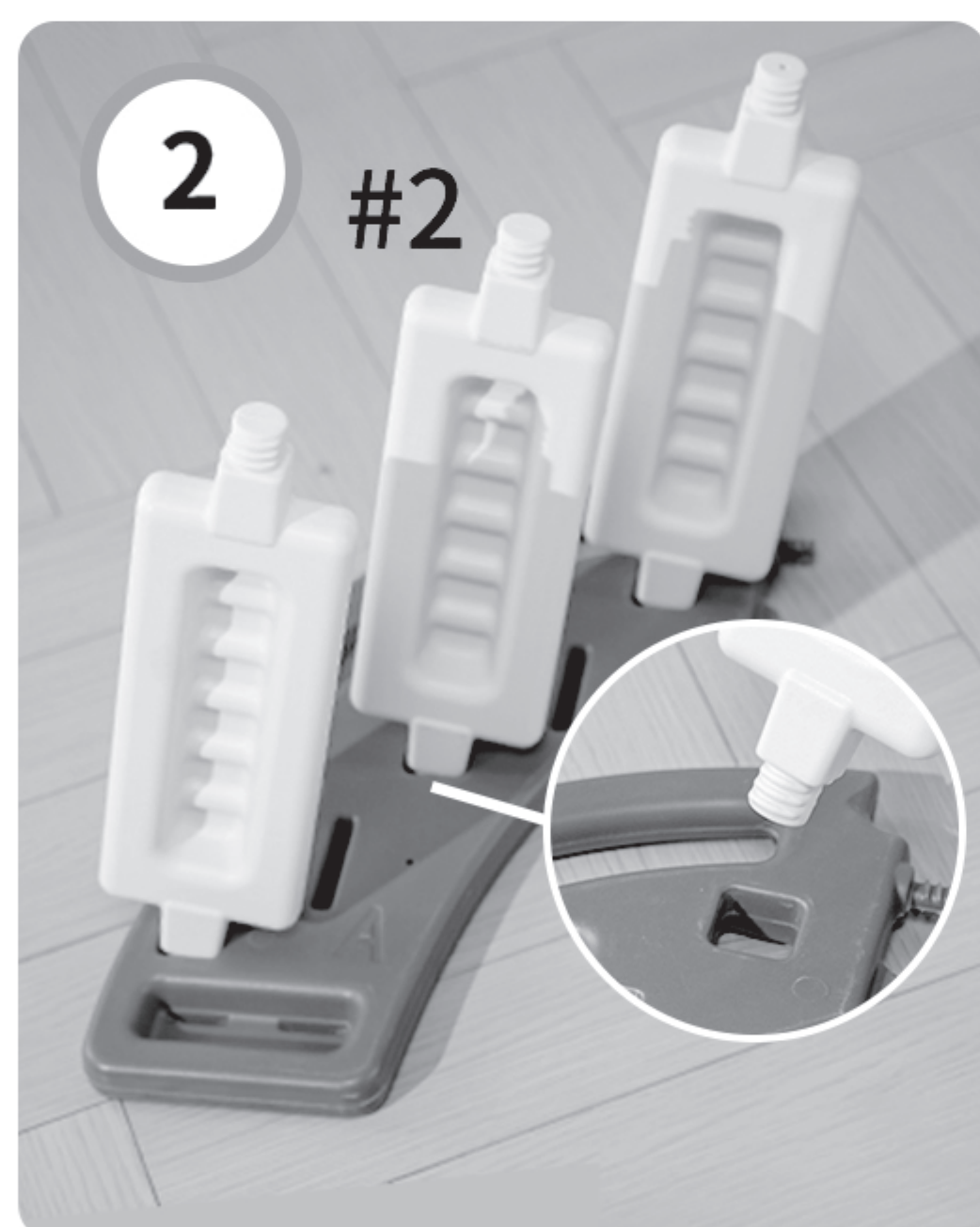


S6X2

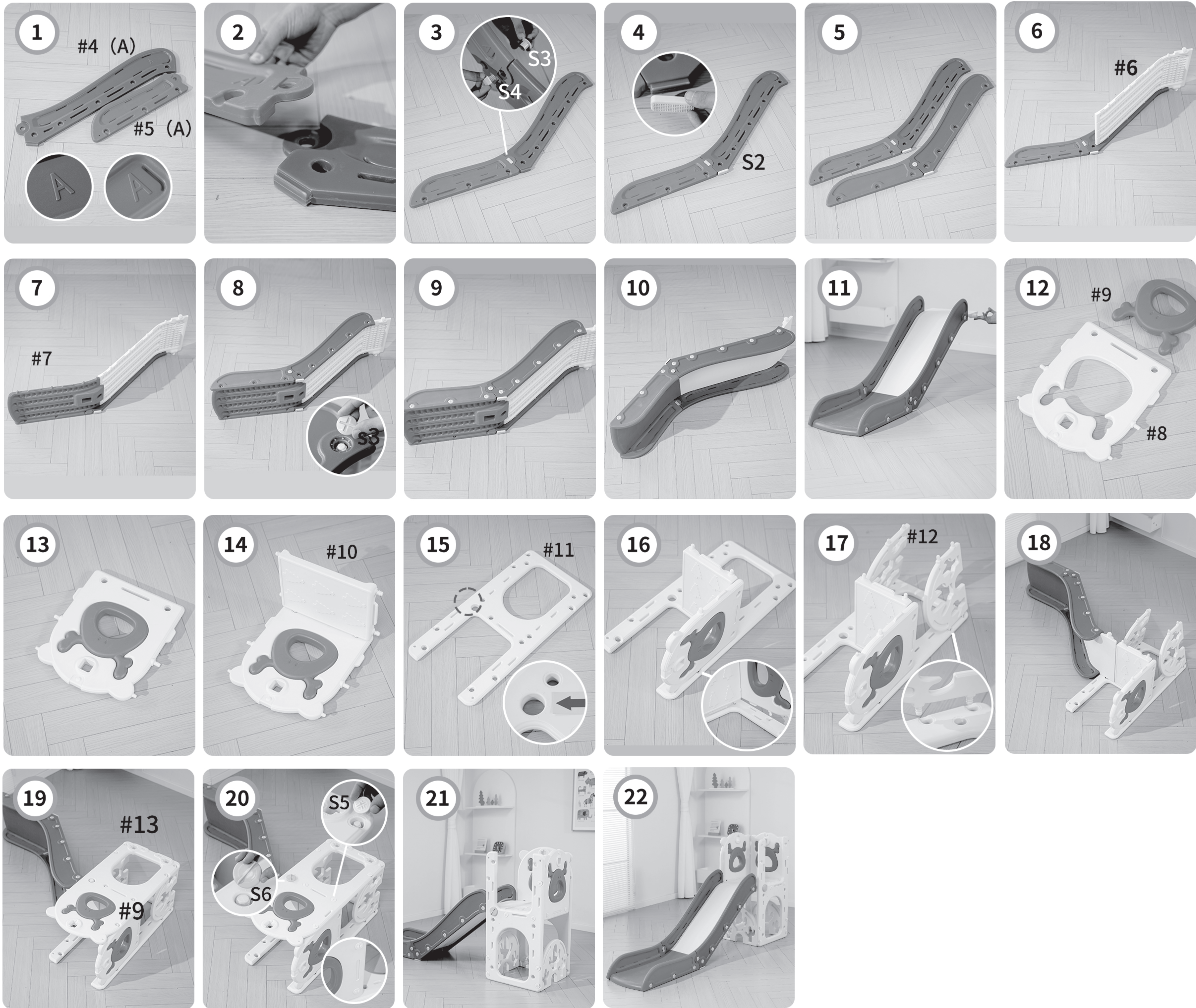


S7X12

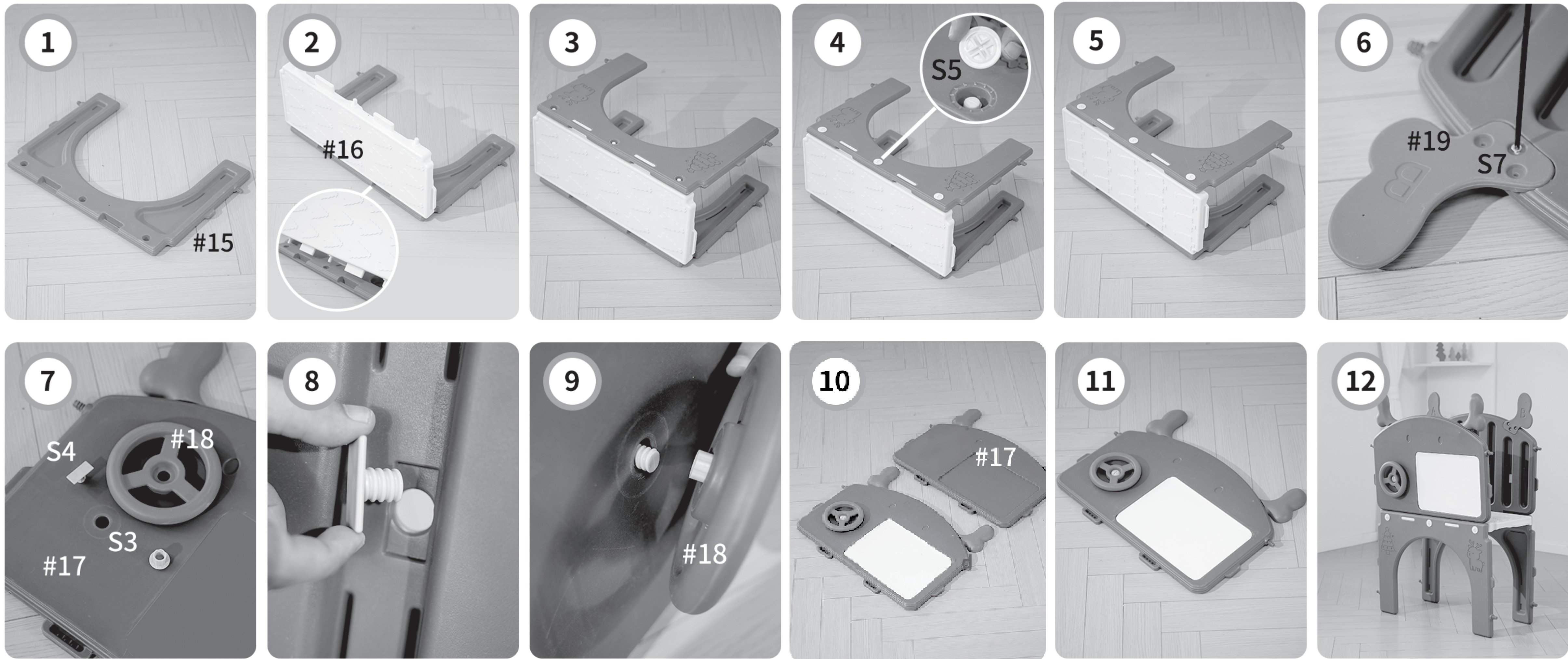
Stair installation/Installation d'escaliers



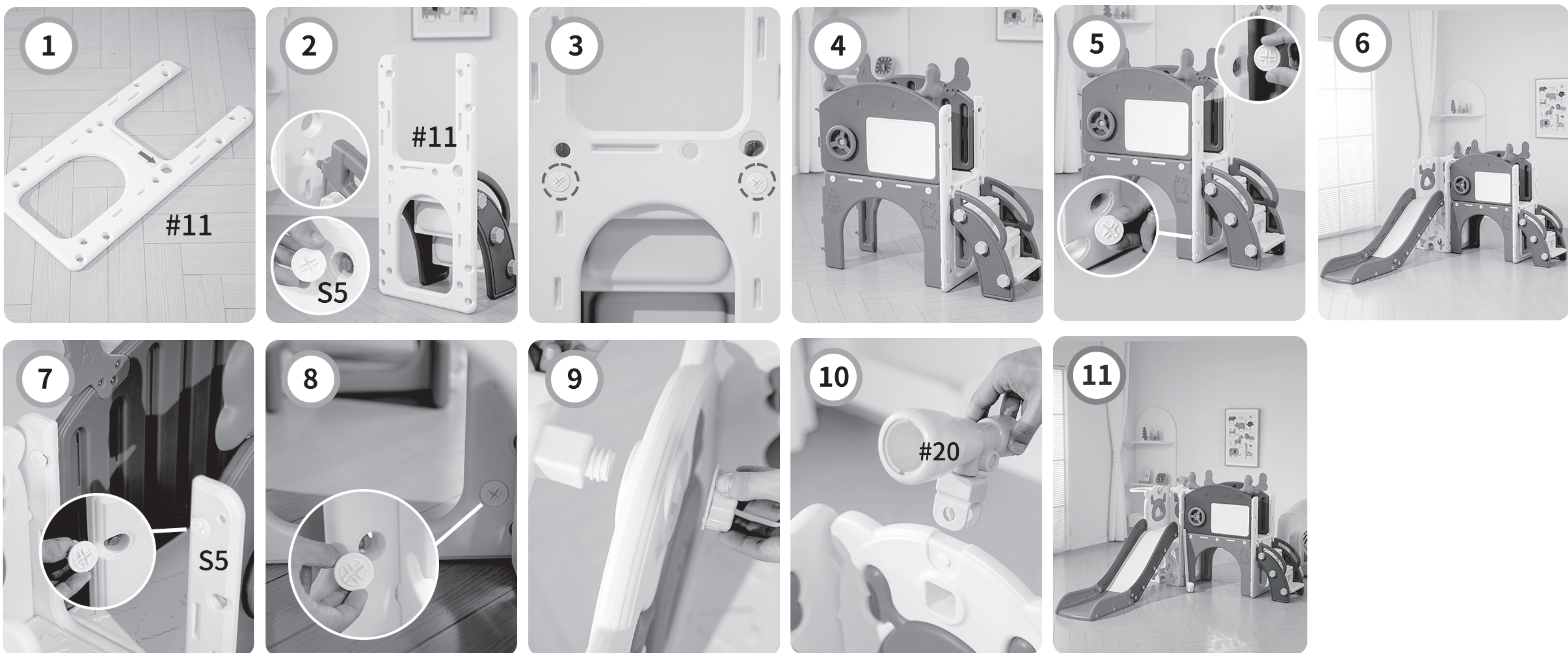
Install the slide waiting area/Installation de la zone d'attente de la glissière



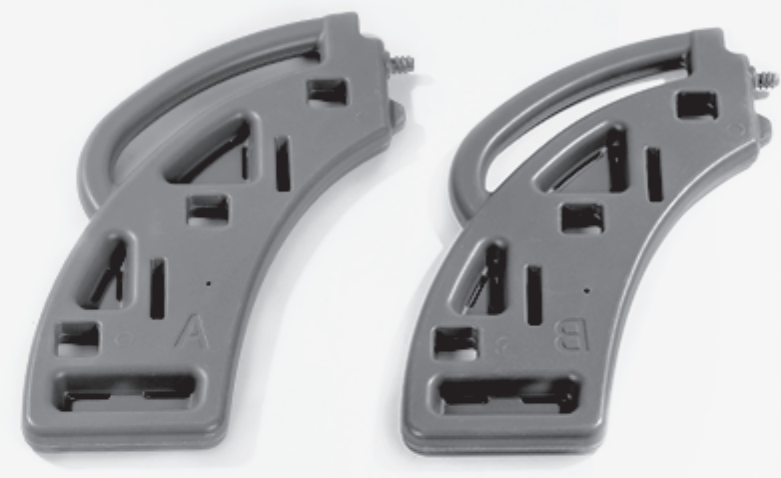
Large aisle installation/Installation Grand Canal



Assembly procedure/Proc é dure d'assemblage



WPX-18 Parts List / Liste des pièces



#1X1 (A+B)



#2X3



#3X2



#4X1 (A+B)



#5X1 (A+B)



#6X1



#7X1



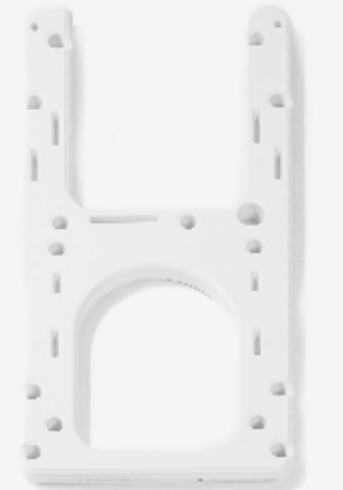
#8X3



#9X4



#10X1



#11X3



#12X4



#13X1



#14X1



#15X2



#16X1



#17X2



#18X1



#19X2 (A+B)



#20X1



#21X1



#22X1



S1X7



S2X2



S3X19



S4X3



S5X52

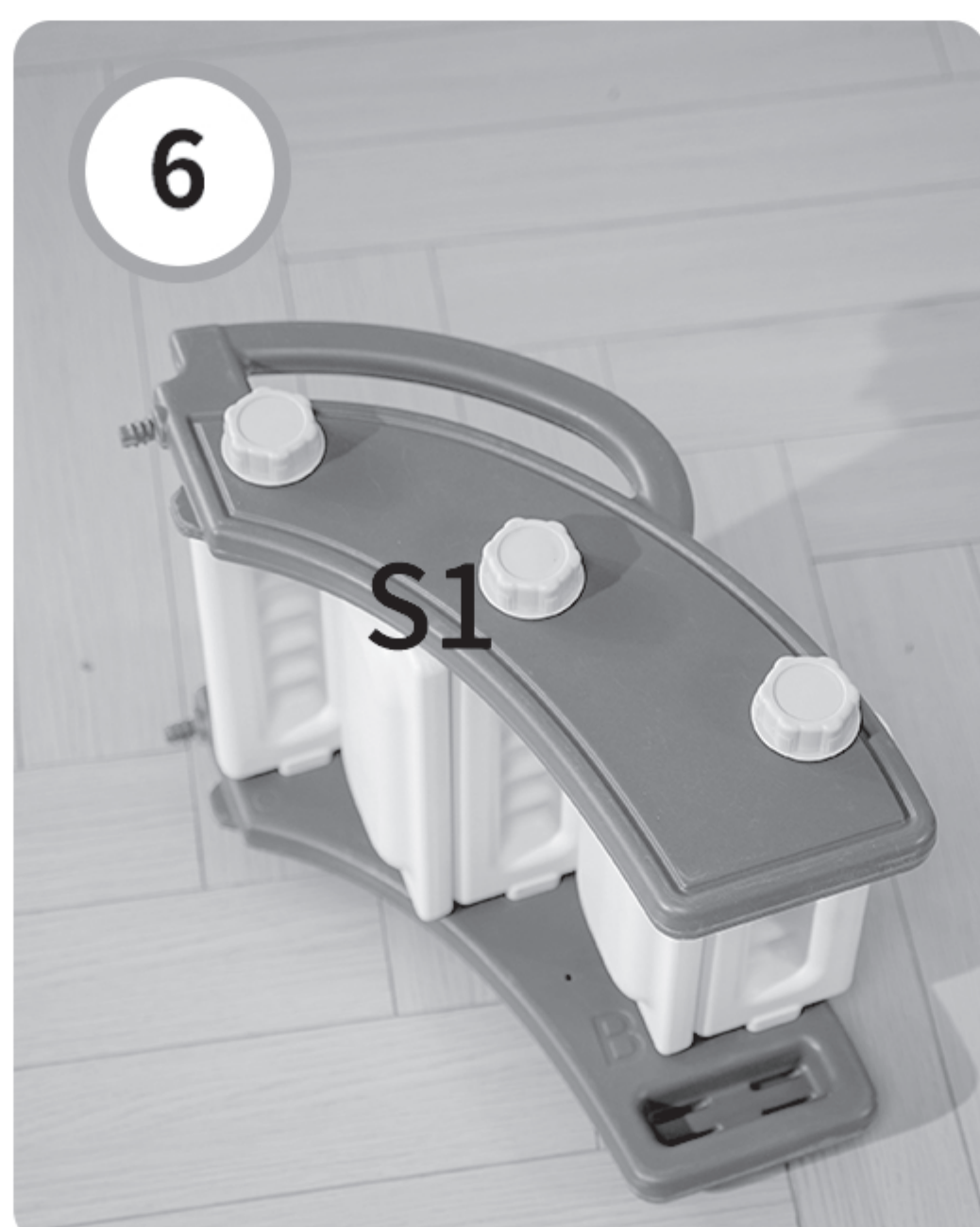
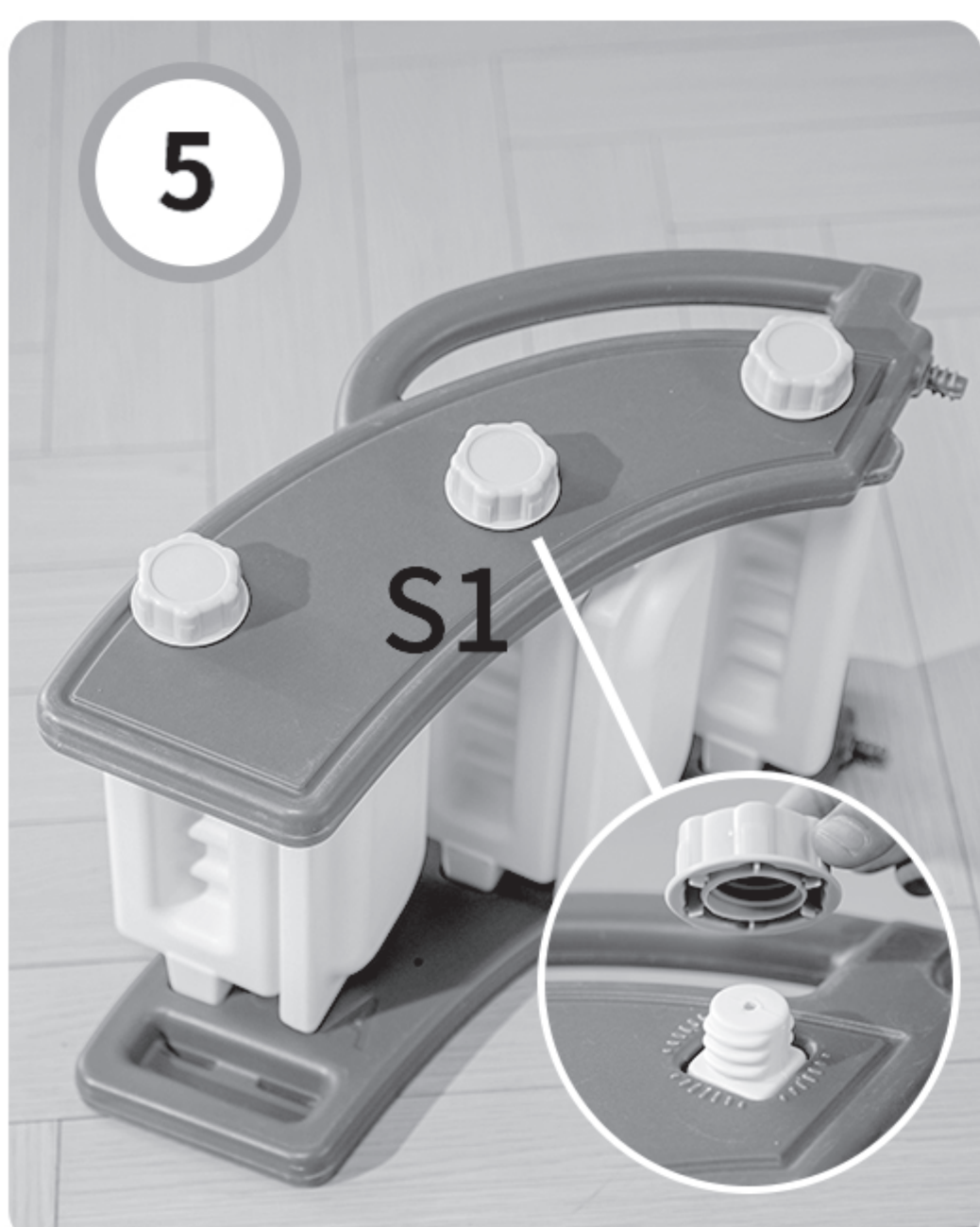
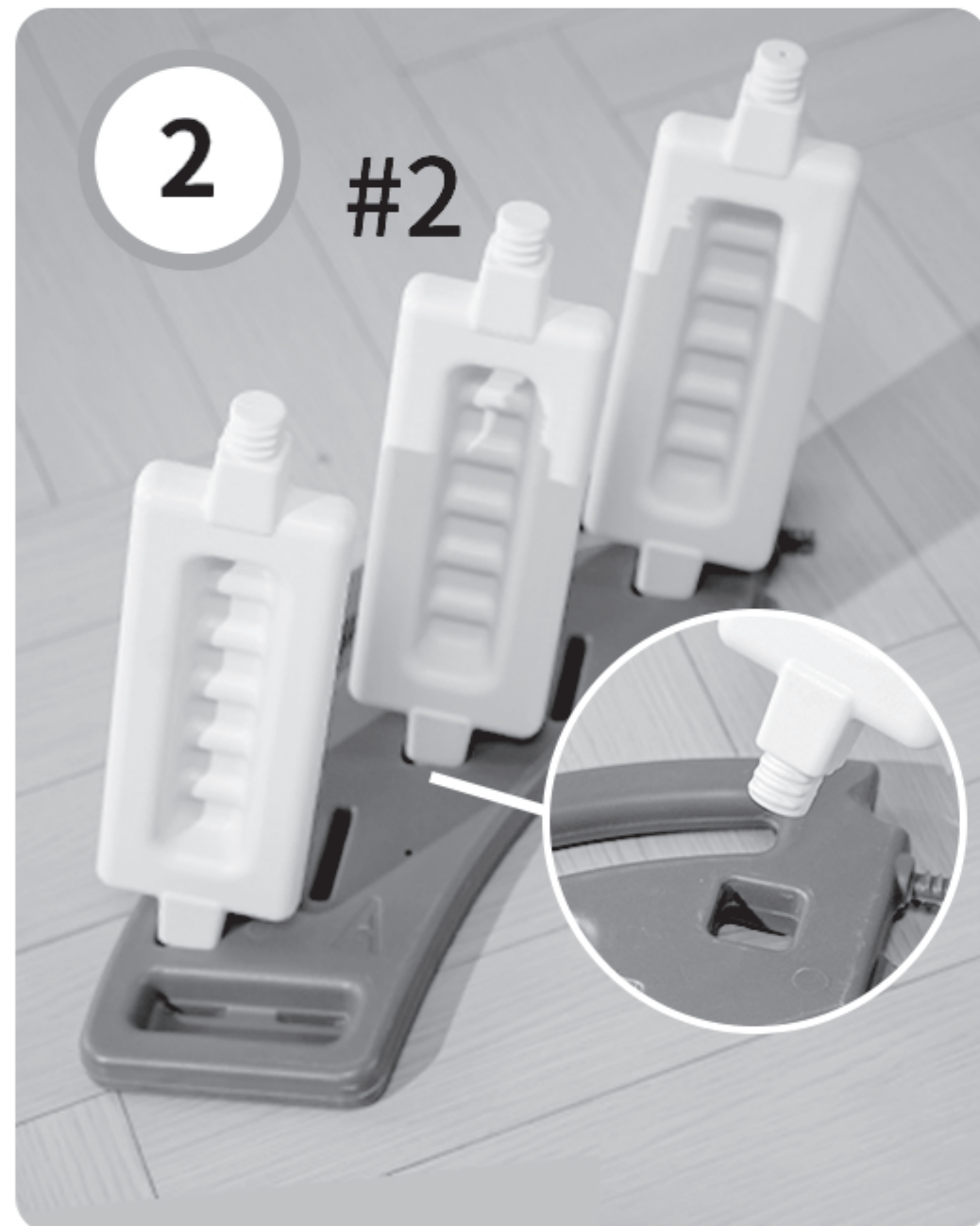


S6X2

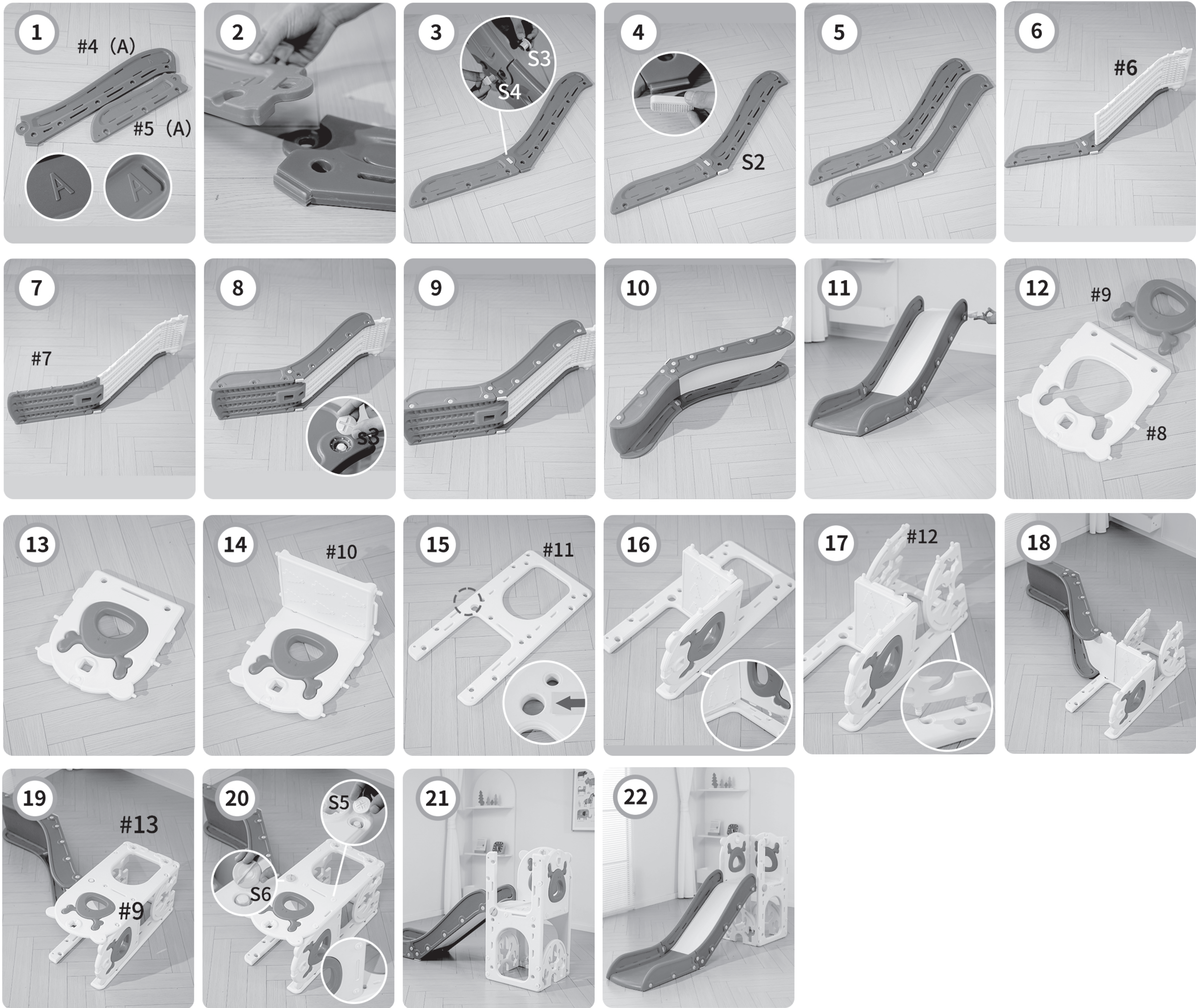


S7X12

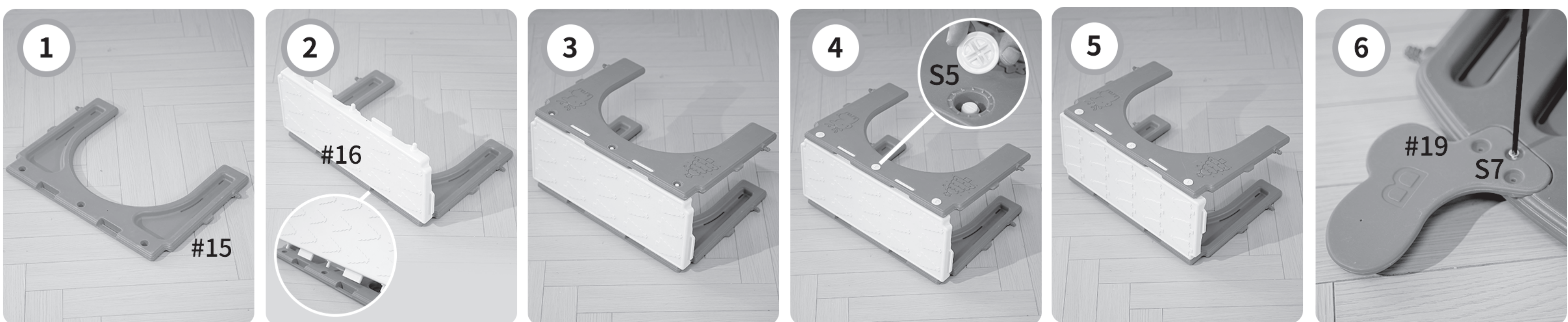
Stair installation/Installation d'escaliers

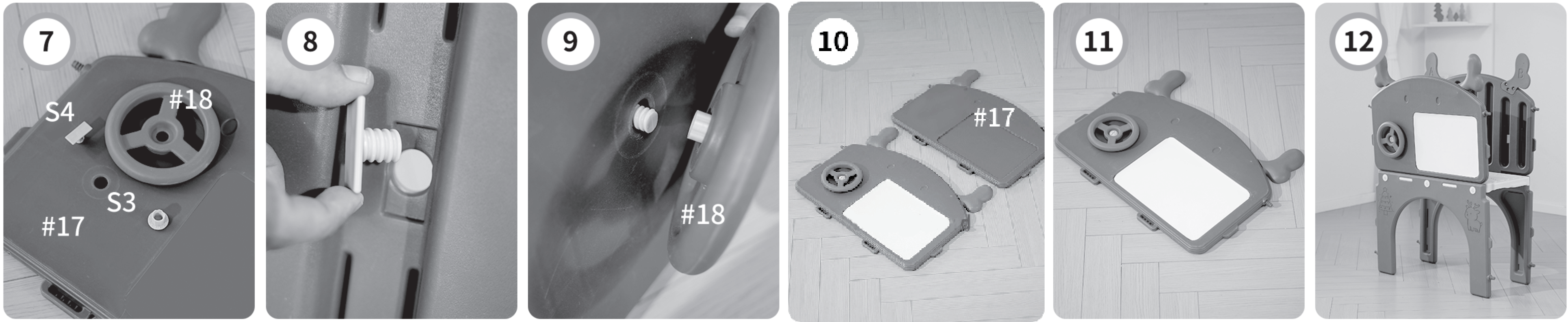


Install the slide waiting area/Installation de la zone d'attente de la glissière

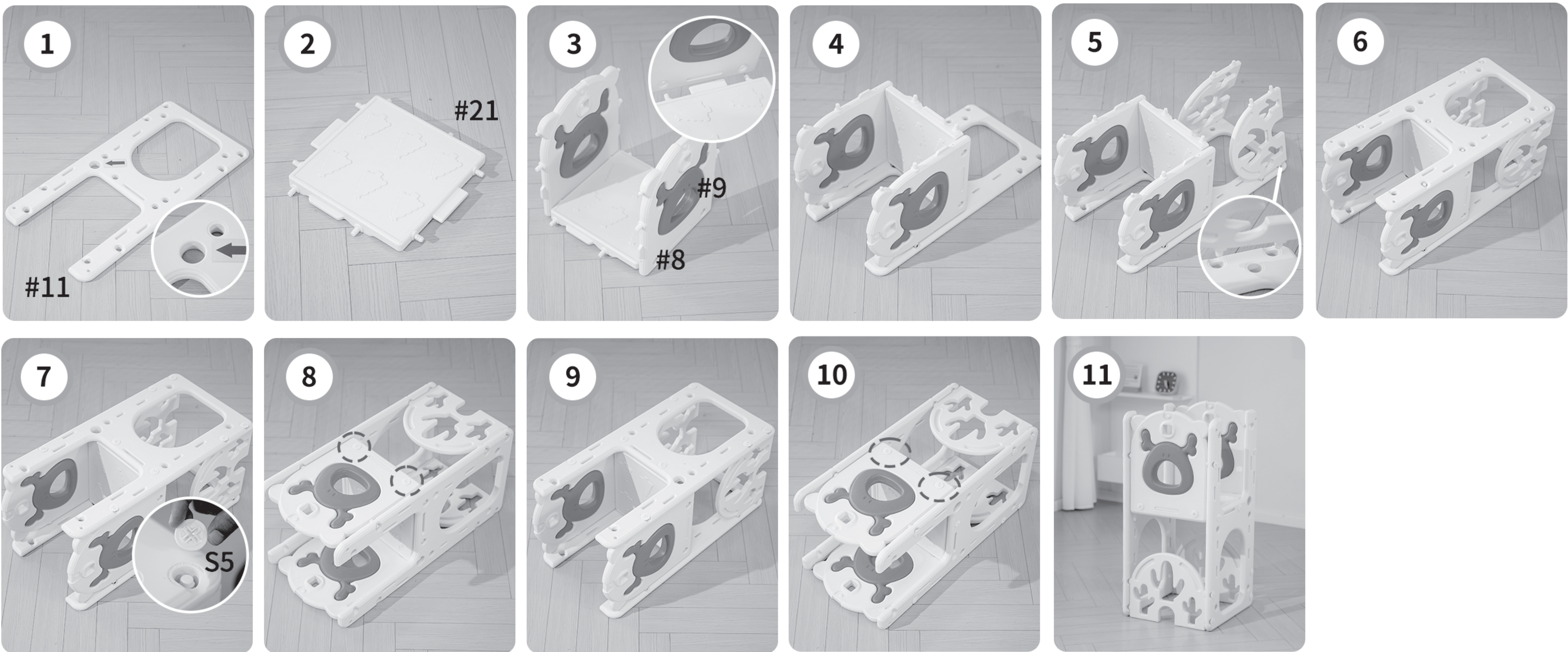


Large aisle installation/Installation Grand Canal

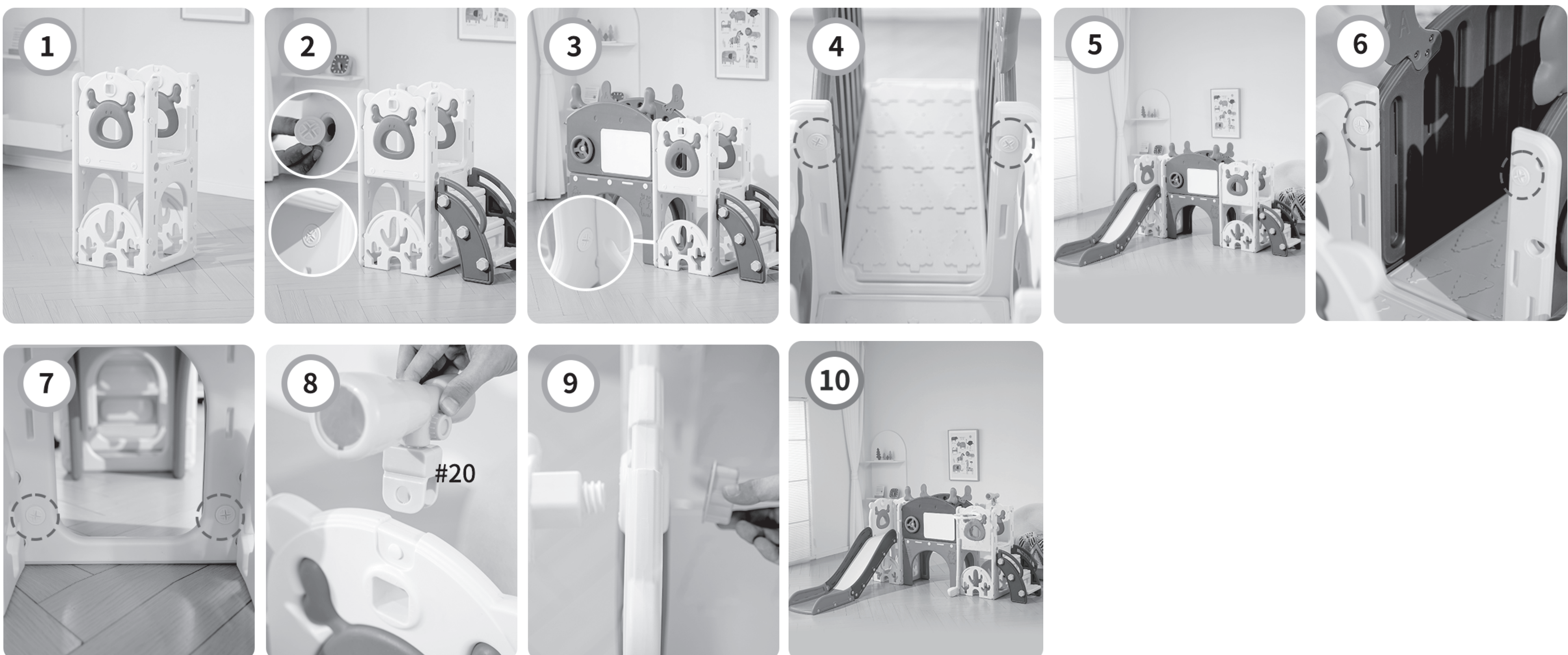




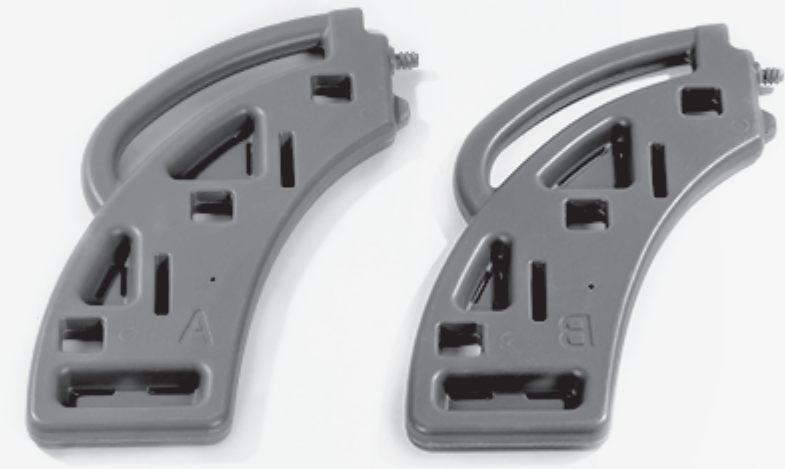
Walkway installation/Installat/ion de passerelle



Assembly procedure/Proc é dure d'assemblage



WPX-19 Parts List / Liste des pièces



#1X1 (A+B)



#2X3



#3X2



#4X1 (A+B)



#5X1 (A+B)



#6X1



#7X1



#8X1



#9X3



#10X1



#11X2



#12X2



#13X2



#14X2



#15X1



#16X2



#17X1



#18X2 (A+B)



#19X2



#20X1



#21X1



#22X1



#23X1



#24X1



#25X1



#26X4



#27X2



#28X1



#29X1



#30X1



S1X15



S2X2



S3X19



S4X3



S5X41



S6X2

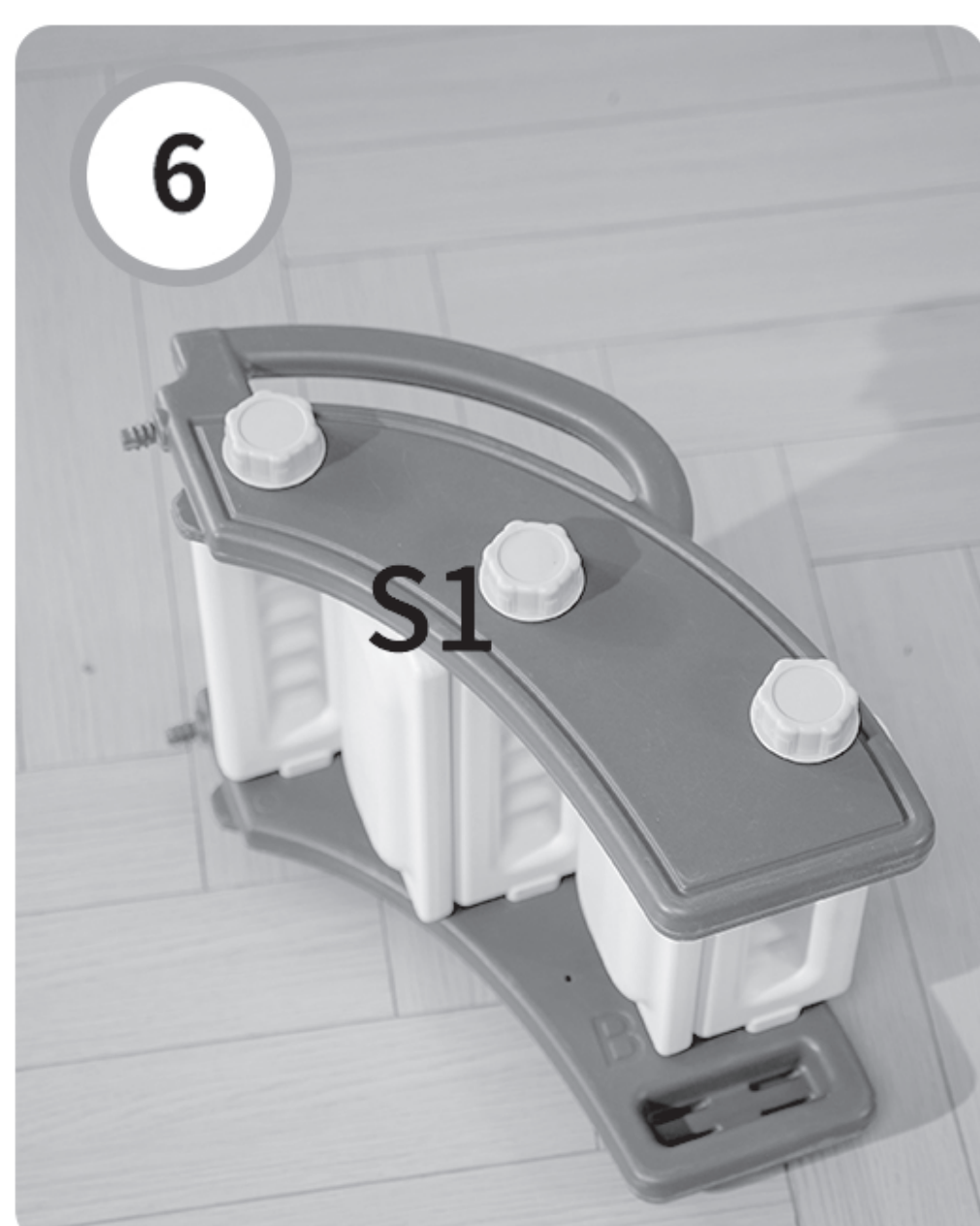
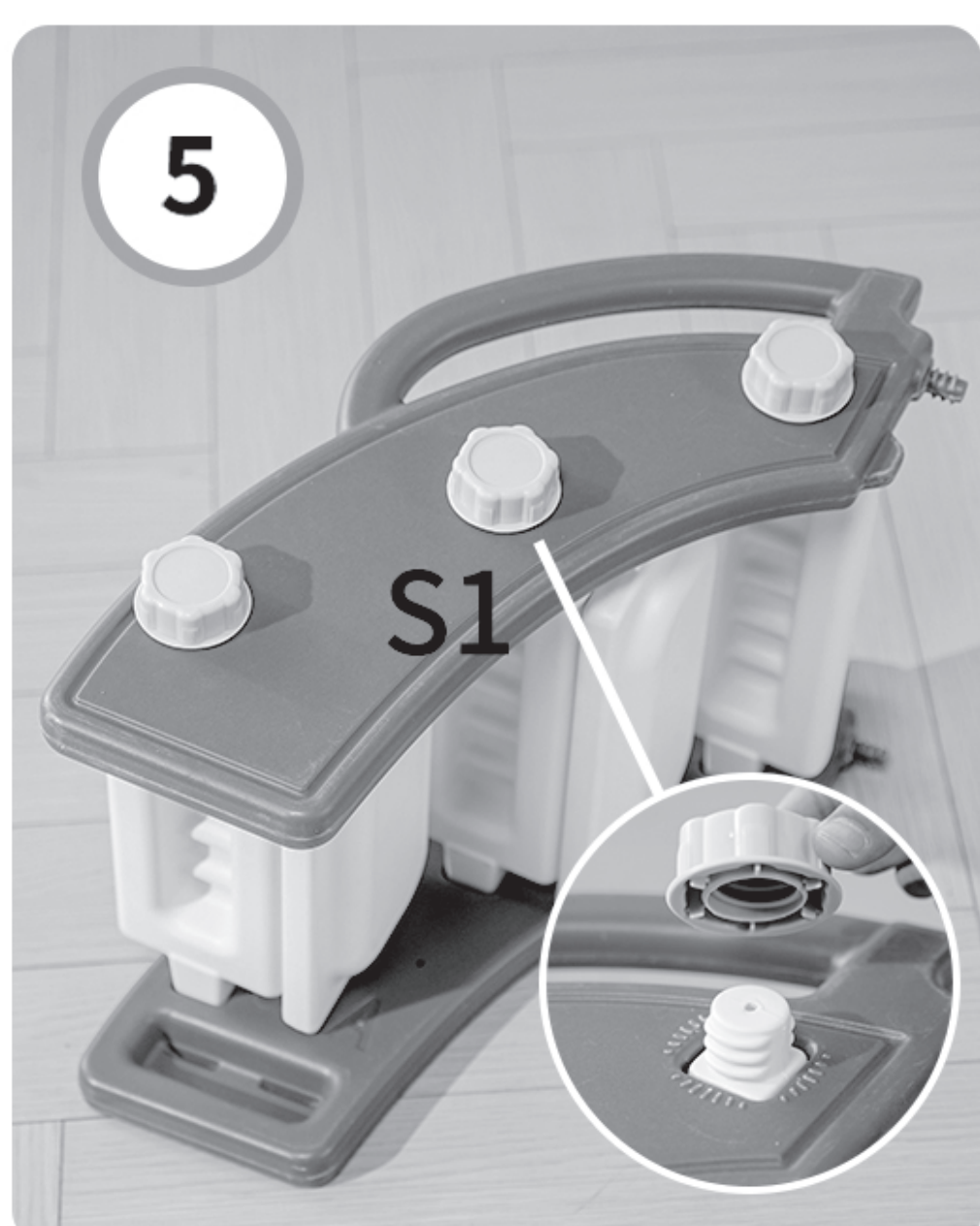
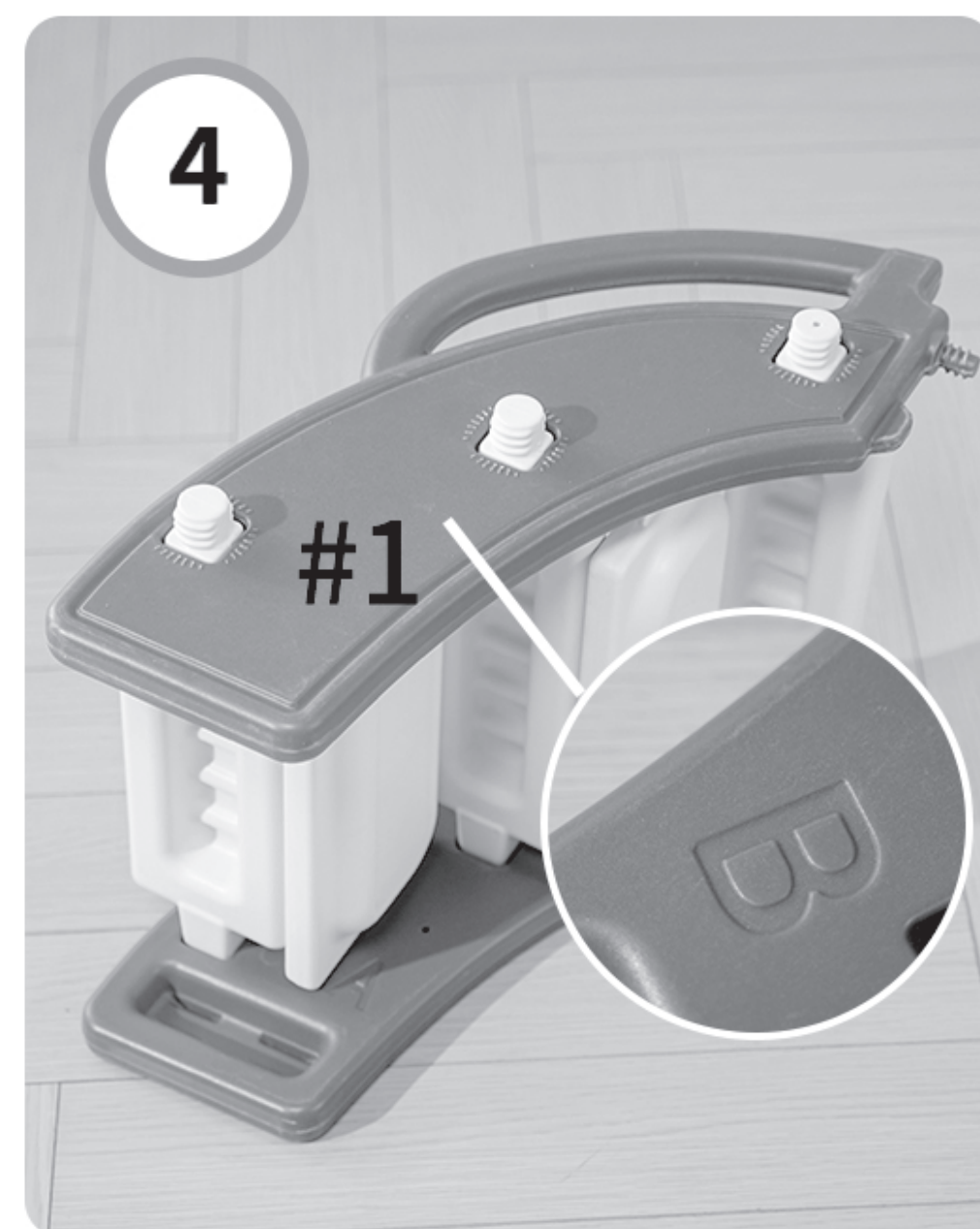
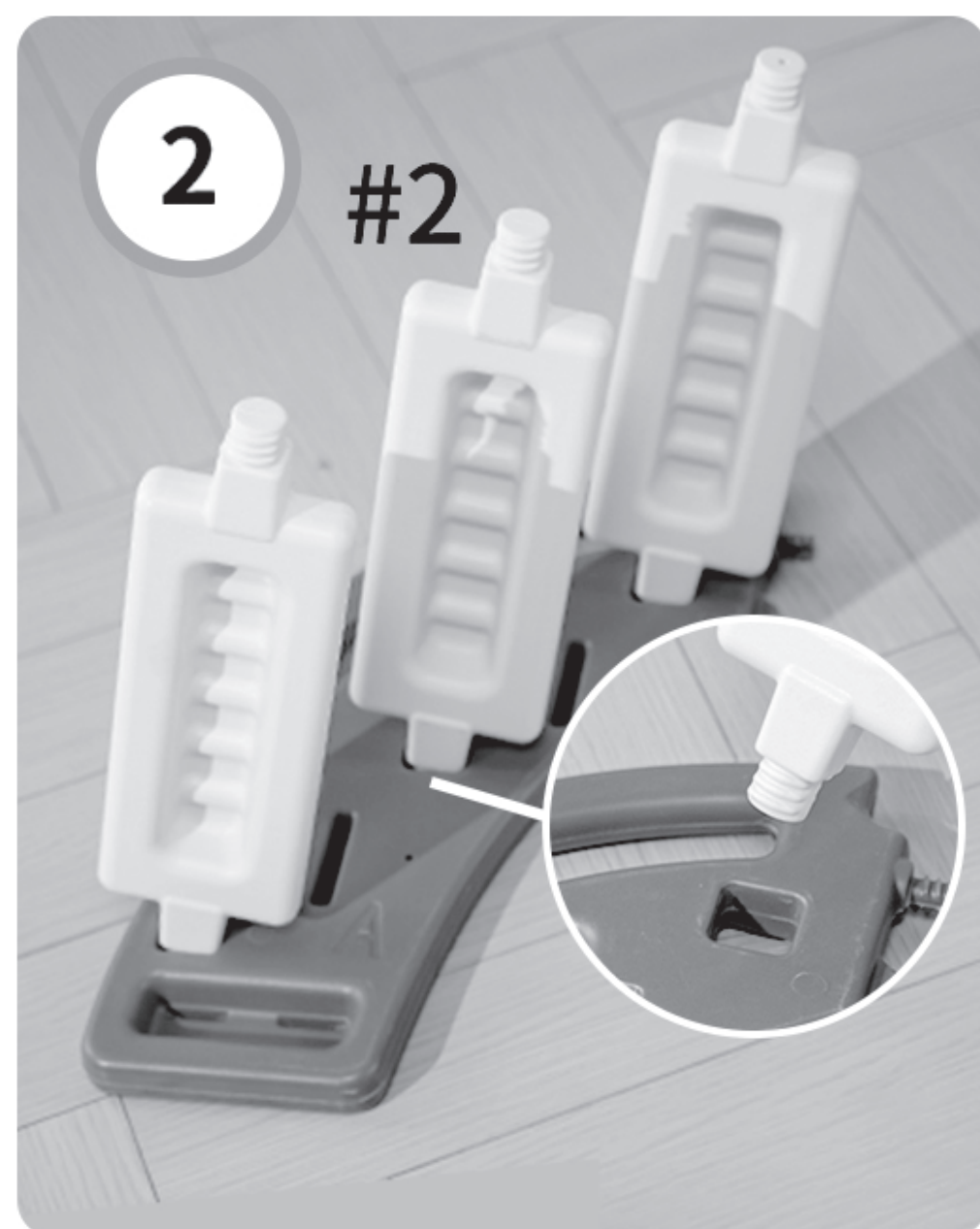


S7X12

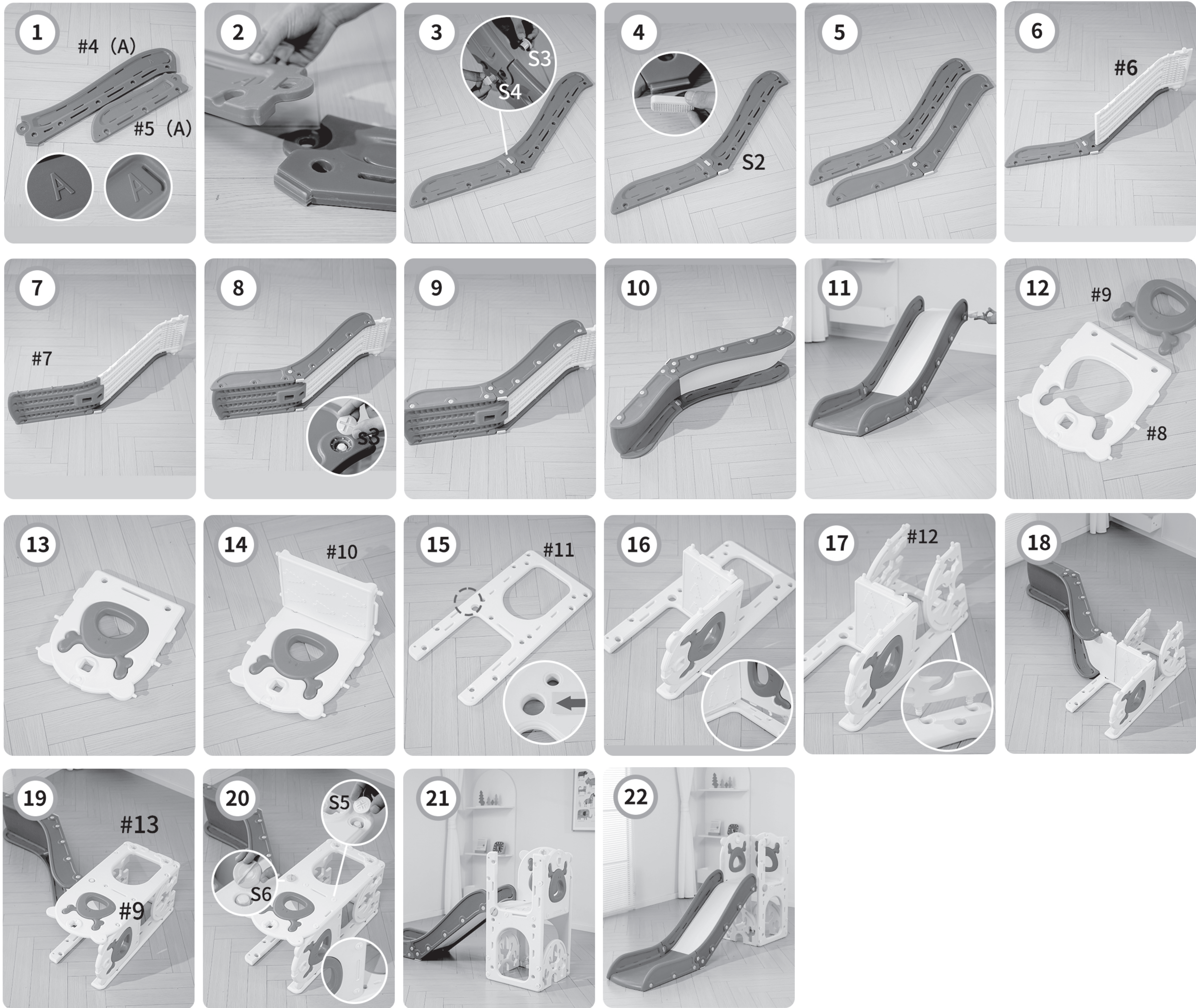


S8X2

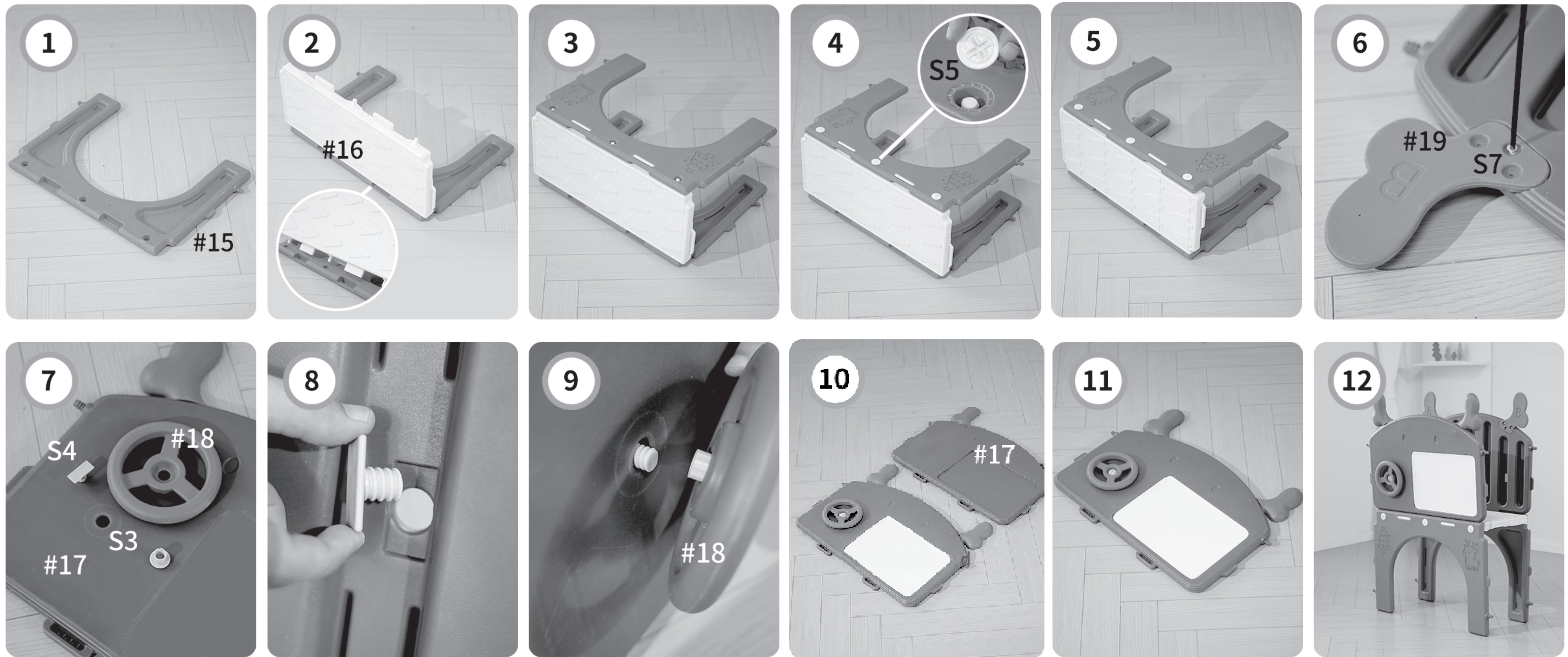
Stair installation/Installation d'escaliers



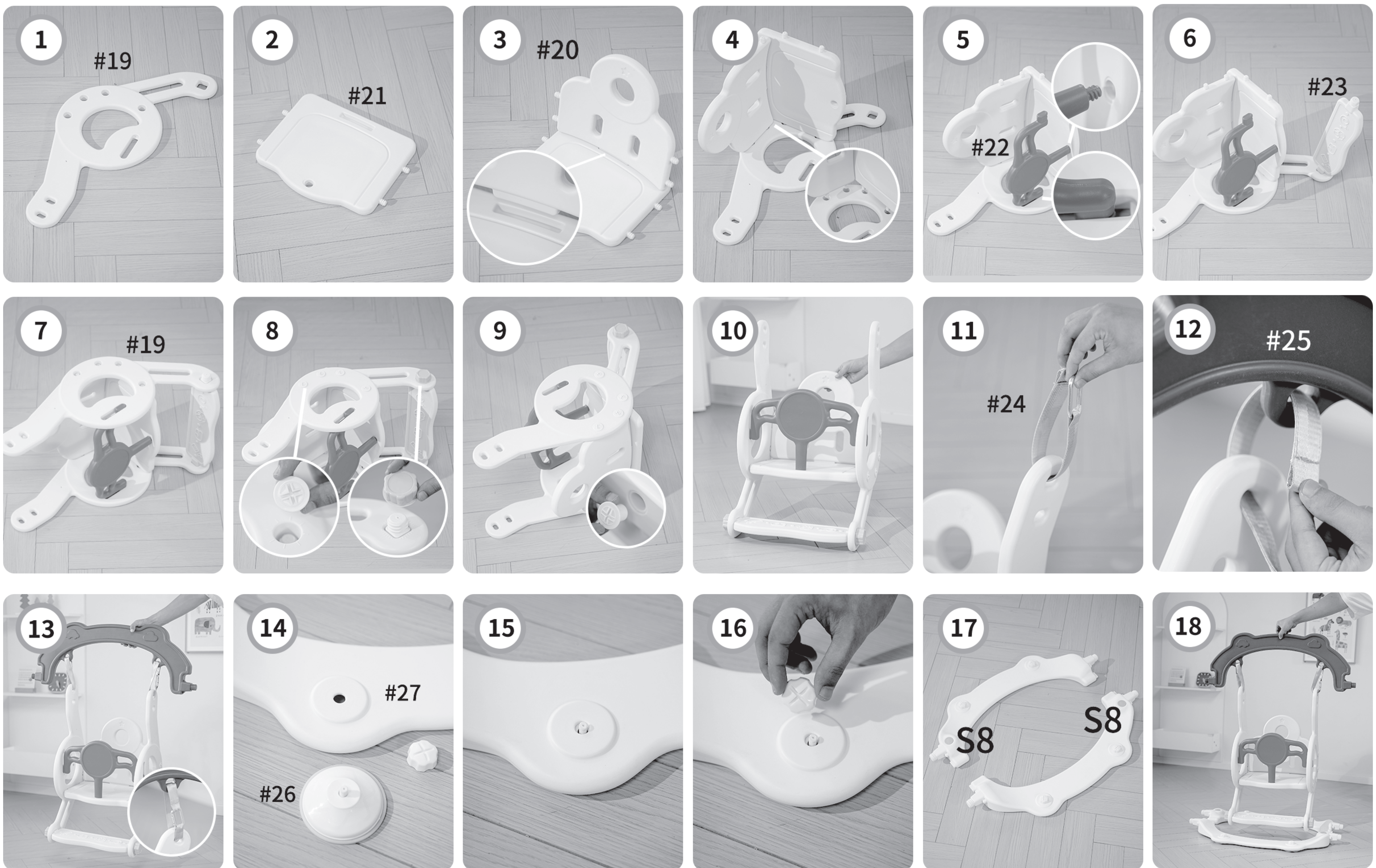
Install the slide waiting area/Installation de la zone d'attente de la glissière



Large aisle installation/Installation Grand Canal



Swing mounting/Installation oscillante



Assembly procedure/Proc é dure d'assemblage

