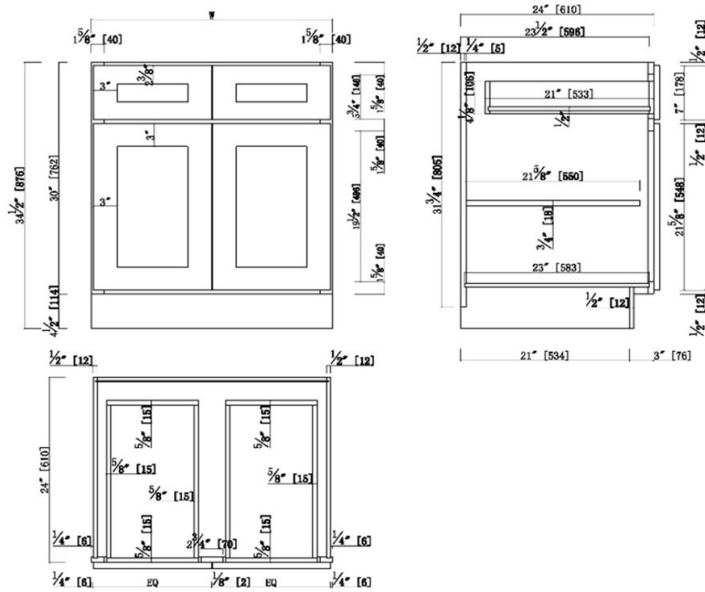


Unassembled Shaker Base Kitchen Cabinet 36x34.5x24



SPECIFICATIONS

MATERIAL CONSTRUCTION:	Wood	NUMBER OF SHELVES:	1
WOOD SPECIES:	Maple	SHELF STYLE:	Flat
ASSEMBLED DIMENSIONS:	34.5" H x 36" L x 24" D	ADJUSTIBLE SHELVES:	Yes
ASSEMBLED WEIGHT:	89.37 lbs.	SHELF ADJUSTIBILITY INCREMENTS:	2.5"
KITCHEN CABINET TYPE:	Base	SHELF DIMENSIONS:	34.5" W x 21.625" D
MOUNTING TYPE:	Floor Mount	SHELF THICKNESS:	0.75"
CONSTRUCTION TYPE:	Face Frame	SHELF MATERIAL:	Plywood
HINGE STYLE:	Soft Close	FACE FRAME MATERIAL:	Solid Maple
DOOR STYLE:	2 Wood shaker doors	SIDES MATERIAL:	Plywood
DRAWER DIMENSIONS 1:	4.17" H x 21" L x 14.48" D	BOTTOM MATERIAL:	Plywood
DRAWER DIMENSIONS 2:	4.17" H x 21" L x 14.48" D	BACK PANEL MATERIAL:	Plywood
DRAWER DIMENSIONS 3:	N/A	BACK BRACE MATERIAL:	Wood
DWR BOX MATERIAL:	SOLID WOOD	TOE KICK INSET WIDTH:	3"
DWR CONSTRUCTION:	Dove Tail	TOOLS NEEDED FOR INSTALLATION:	Phillips Screwdriver Mallet Wood Glue
DWR GLIDE:	Dove Tail	FASTENER TYPE:	Wood Screw
FAKE DWR QTY:	0		
FAKE DWR LOCATION:	N/A		

WARRANTY: 1-Year limited warranty
LEGAL FOR SALE IN CALIFORNIA: Yes
CARB COMPLIANT: CARB Phase 2
TSCA TITLE IV COMPLIANT: Yes

