

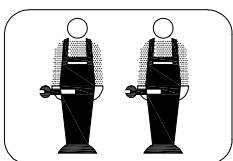
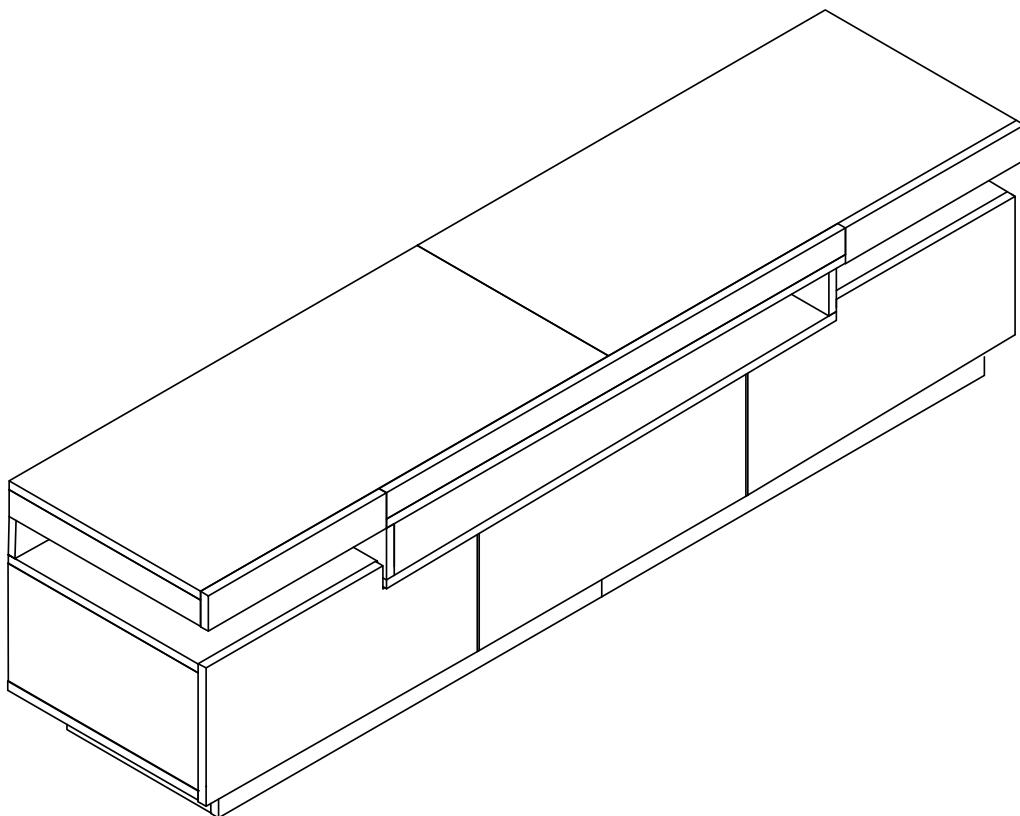
ASSEMBLY INSTRUCTIONS MONTAGEANLEITUNGEN



Our product will be delivered to you in 2 packages. The delivery times of these 2 packages may differ, please be patient and thank you for your understanding.

Notre produit vous sera livré en 2 colis. Les délais de livraison de ces 2 colis peuvent différer, soyez patient et merci de votre compréhension.

Unser Produkt wird Ihnen in 2 Paketen geliefert. Die Lieferzeiten dieser 2 Pakete können abweichen, bitte haben Sie etwas Geduld und vielen Dank für Ihr Verständnis.



Werkzeug Phillips-schraubendreher
Tool phillips head screwdriver
Outil tournevis cruciforme



Montagedauer 1 Stunde 30 Minuten
assembling time 1 hour 30 minutes
temps de montage 1h30

Sicherheits- und Pflegehinweise

Wichtig: Bitte lesen Sie diese Anweisungen vollständig durch, bevor Sie mit der Montage beginnen.

Achtung: Dieses Gerät ist relativ schwer. Bitte heben Sie es vorsichtig an. Überprüfen Sie, ob alle auf den Seiten aufgeführten Komponenten und Werkzeuge vorhanden sind.

Entfernen Sie sämtliches Zubehör aus den Plastiktüten und teilen Sie es in seine Gruppen auf.

Halten Sie Kinder und Tiere vom Arbeitsbereich fern, Kleinteile könnten beim Verschlucken ersticken. Teile der Montage sind mit 2 Personen einfacher.

Stellen Sie sicher, dass Sie genügend Platz haben, um die Teile anzuordnen, bevor Sie beginnen.

Stellen Sie sich nicht auf das Produkt und belasten Sie es nicht, dies könnte zu Schäden führen.

Montieren Sie den Gegenstand so nah wie möglich an seiner endgültigen Position im selben Raum.

Montieren Sie das Gerät auf einer weichen, ebenen Oberfläche, um eine Beschädigung des Geräts oder Ihres Bodens zu vermeiden. Verwenden Sie dazu den geöffneten Gerätekarton.

Pflege und Wartung

Reinigen Sie das Gerät nur mit einem feuchten Tuch und einem milden Reinigungsmittel.

Verwenden Sie keine Bleichmittel oder Scheuermittel. Überprüfen Sie von Zeit zu Zeit, ob sich an diesem Gerät keine Schrauben gelöst haben.

(Notiz)

Bei Bedarf kann die nächste Seite ausgeschnitten und während der gesamten Zusammenstellung als Referenz verwendet werden.

Bewahren Sie diese Seite zusammen mit diesen Anweisungen zum späteren Nachschlagen im Produkthandbuch auf.

Dieses Produkt besteht aus 2 Logistikpaketen. Bitte überprüfen Sie die Anzahl Ihrer Pakete. Wenn eines fehlt, wenden Sie sich bitte an die Logistik.

Bitte lesen Sie alle Vorsichtsmaßnahmen und Anweisungen in diesem Handbuch, bevor Sie dieses Produkt verwenden.

Wenn Sie Fragen zu diesem Produkt haben, wenden Sie sich bitte rechtzeitig an Ihren Lieferanten.

Safety and Care Advice

Important - Please read these instructions fully before starting assembly

Warning: This unit is relatively heavy. Please lift with care. Check you have all the components and tools listed on pages.

Remove all fittings from the plastic bags and separate them into their groups.

Keep children and animals away from the work area, small parts could choke if swallowed. Parts of the assembly will be easier with 2 people.

Make sure you have enough space to layout the parts before starting. Do not stand or put weight on the product, this could cause damage.

Assemble the item as close as possible to its final position in the same room.

Assemble on a soft level surface to avoid damaging the unit or your floor use opened out unit carton.

Care and maintenance

Only clean using a damp cloth and mild detergent, do not use bleach or abrasive cleaners. From time to time check that there are no loose screws on this unit.

(Note)

If required the next page can be cut out and used as reference throughout the assembly.

Keep this page with these instructions for future reference Product Manual.

This product consists of 2 logistics packages, please check the number of your packages, if there is any missing, please contact the logistics.

Please read all precautions and instructions in this manual before using this product.

If you have any questions about this product, please contact your supplier in time.

Conseils de sécurité et d'entretien

Important - Veuillez lire entièrement ces instructions avant de commencer l'assemblage

Attention : cet appareil est relativement lourd. Veuillez soulever avec précaution. Vérifiez que vous disposez de tous les composants et outils répertoriés sur les pages.

Retirez tous les raccords des sacs en plastique et séparez-les en groupes.

Gardez les enfants et les animaux éloignés de la zone de travail, les petites pièces pourraient s'étouffer en cas d'ingestion. Les pièces de l'assemblage seront plus faciles à 2 personnes.

Assurez-vous de disposer de suffisamment d'espace pour disposer les pièces avant de commencer. Ne vous tenez pas debout et ne mettez pas de poids sur le produit, cela pourrait l'endommager.

Assemblez l'objet le plus près possible de sa position finale dans la même pièce.

Assemblez sur une surface douce pour éviter d'endommager l'unité ou votre sol, utilisez le carton de l'unité ouvert.

Entretien et maintenance

Nettoyez uniquement à l'aide d'un chiffon humide et d'un détergent doux, n'utilisez pas d'eau de Javel ni de nettoyeurs abrasifs. Vérifiez de temps en temps qu'il n'y a pas de vis desserrées sur cet appareil.

(Note)

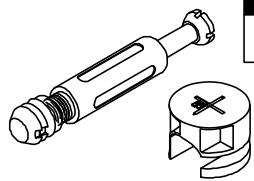
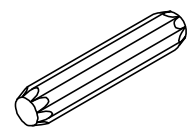
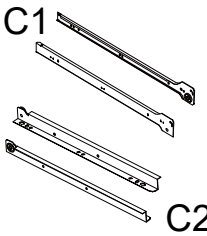
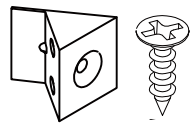

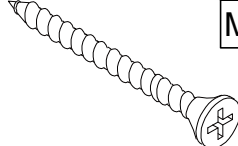
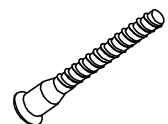
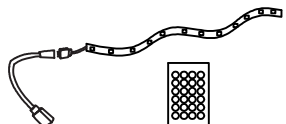

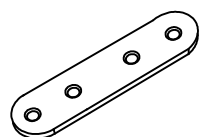

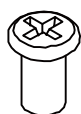
Si nécessaire, la page suivante peut être découpée et utilisée comme référence tout au long de l'assemblage.

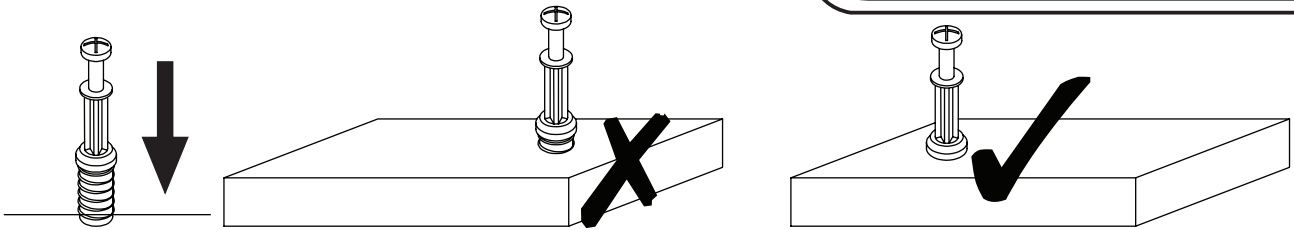
Conservez cette page avec ces instructions pour référence future du manuel du produit.

Ce produit se compose de 2 colis logistiques, veuillez vérifier le numéro de vos colis, s'il en manque, veuillez contacter la logistique.

Veuillez lire toutes les précautions et instructions de ce manuel avant d'utiliser ce produit.

Si vous avez des questions sur ce produit, veuillez contacter votre fournisseur à temps.

 <p>A x78 +2(spare)</p>	 <p>B x20 M8*40 +2(spare)</p>	 <p>C x 3 300mm</p> <p>C1 C2</p>
 <p>D x12 M3*14</p>	 <p>E x32 M3.5*14 +2(spare)</p>	 <p>F x15 M3.5*35</p>
 <p>G x8 M7*50</p>	 <p>H x1 800mm</p>	 <p>I x2 50mm</p>
 <p>J x2</p>	 <p>K x2 30mm</p>	 <p>L x2</p>



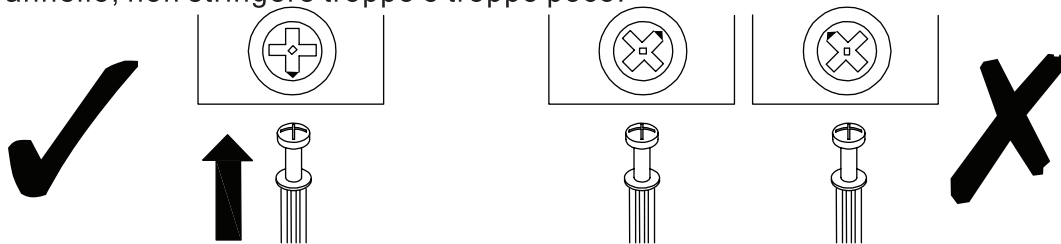
EN_QUICKFIT: Tighten quickfit until shoulder is flush with panel. Do not overtighten or undertighten.

FR_RACCORD RAPIDE: Faites serrer le raccord rapide jusqu'à ce que l'épaulement soit parfaitement encastré dans le panneau. Il ne faut ni trop serrer ni insuffisamment serrer.

ES_QUICKFIT: Apriete quickfit hasta que el hombro se descargue con el panel. NO lo sobreapriete ni lo apriete poco.

DE_QUICKFIT: Ziehen Sie den Quickfit fest, bis die Schulter mit der Platte bündig ist. Bitte nicht zu fest oder zu schwach anziehen.

IT_MONTAGGIO RAPIDO: Stringere il montaggio rapido fino a quando la spalla è a filo con il pannello, non stringere troppo o troppo poco.



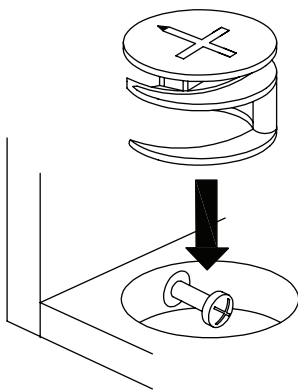
EN_CAM LOCK: When fitting cam lock, ensure starting position is correct before you insert connecting quickfit.

FR_SERRURE BATTEUSE: Avant d'insérer la serrure batteuse, veillez à la bonne orientation avant d'insérer le raccord rapide.

ES_CIERRE DE LA CÁMARA: Cuando instale el cierre de la cámara, asegúrese de que la posición de inicio es correcta antes de que inserte el quickfit conector.

DE_CAM-LOCK: Achten Sie bei der Montage des Cam-Locks auf die richtige Ausgangsposition, bevor Sie den Quickfit einsetzen.

IT_BLOCCAGGIO A CAMMA: Quando si monta il bloccaggio a camma, assicurarsi che la posizione iniziale sia corretta prima di inserire il montaggio rapido di collegamento.



EN_Quickfit head should be in the centre of the cam lock when the two panels are joined.

Cam lock should be inserted before quickfit.

FR_Lorsque les deux panneaux sont assemblés, la tête du raccord rapide doit reposer au centre de la serrure batteuse. Il faut insérer la serrure batteuse avant le raccord rapide.

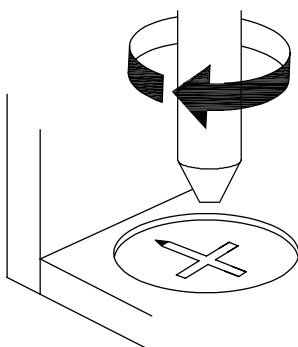
ES_El cabezal del quickfit debe estar en el centro del cierre de la cámara cuando se unan los dos paneles.

Se debe insertar el cierre de la cámara antes que el quickfit.

DE_Der Quickfit-Kopf sollte sich in der Mitte des Cam-Locks befinden, wenn die beiden Platten zusammengefügt sind. Der Cam-Lock sollte vor dem Quickfit eingesetzt werden.

IT_La testa del montaggio rapido deve trovarsi al centro del bloccaggio a camma quando i due pannelli sono uniti.

Il Bloccaggio a Camma deve essere inserito prima del montaggio rapido.




EN_Turn cam lock clockwise to tighten.

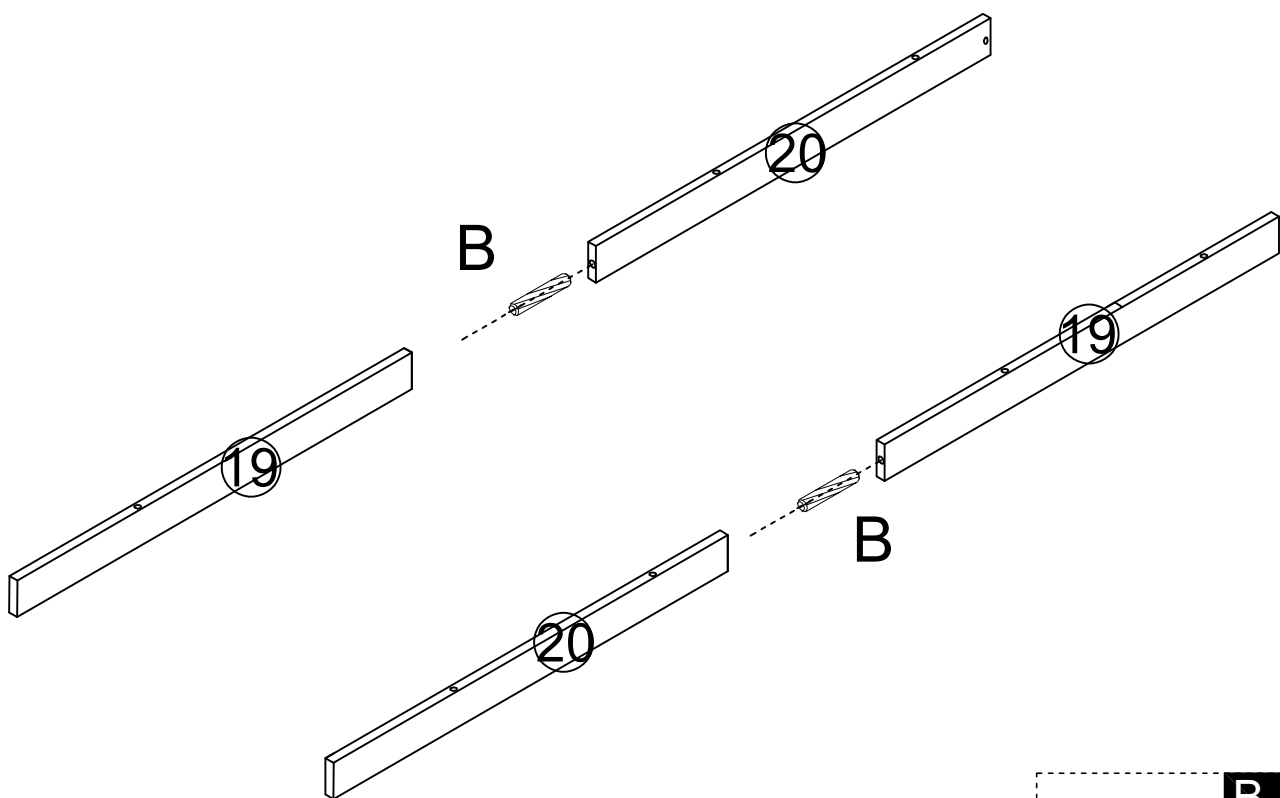
FR_Faites tourner la serrure batteuse dans le sens des aiguilles d'une montre pour la resserrer.

ES_Gire el cierre de la cámara en sentido horario para apretarlo.

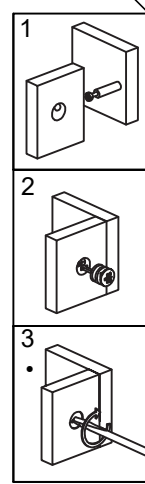
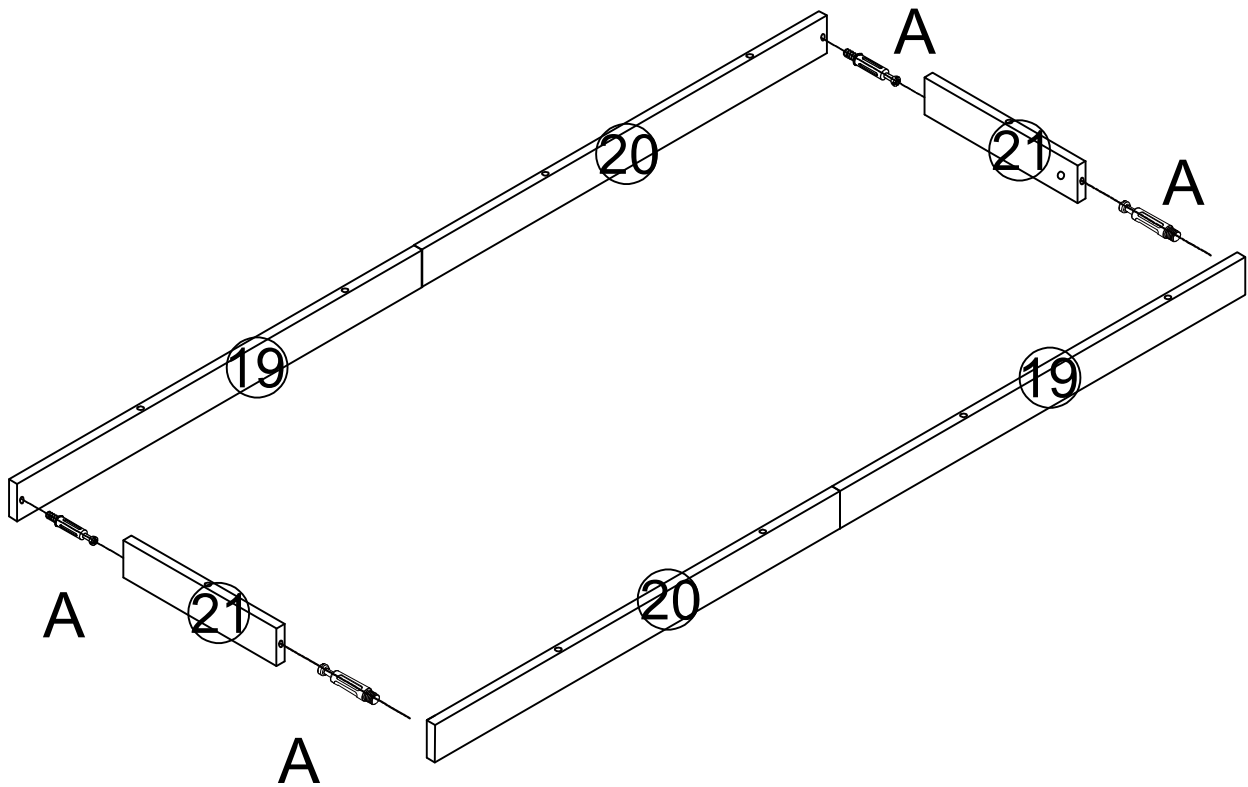
DE_Drehen Sie den Cam-Lock im Uhrzeigersinn, um ihn festzuziehen.

IT_Ruotare il bloccaggio a camma in senso orario per stringere.

BOX 1-2	SKU:N605P173144W	BOX 2-2	SKU:N605P173145W
①	800*375*15*=1PCS	⑦	115*121*15*=2PCS
②	800*375*15*=1PCS	⑧	45*375*15*=1PCS
③	900*390*15*=1PCS	⑨	45*375*15*=1PCS
④	900*390*15*=1PCS	⑫	200*373*15*=1PCS
⑤	90*390*15*=1PCS	⑭	195*373*15*=1PCS
⑥	90*390*15*=1PCS	⑮	200*373*15*=1PCS
⑩	351*373*15*=1PCS	⑯	528*373*15*=1PCS
⑪	351*373*15*=1PCS	⑰	514*373*15*=1PCS
⑬	195*373*15*=1PCS	⑱	528*373*15*=1PCS
⑲	750*60*15*=2PCS	⑽	300*120*15*=3PCS
⑳	750*60*15*=2PCS	⑾	300*120*15*=3PCS
㉑	283*60*15*=2PCS	㉑	458*120*15*=2PCS
㉒	350*60*15*=1PCS	㉒	468*295*3*=3PCS
㉓	900*45*15*=1PCS	㉓	460*120*15*=1PCS
㉔	350*60*15*=1PCS	㉔	188*520.67*3*=1PCS
㉙	285*62*15*=3PCS	㉙	208*520*3*=2PCS
㉚	534*235*15*=1PCS	 Hardware Kit	
㉛	526.5*198.5*15*=1PCS		
㉜	534*235*15*=1PCS		

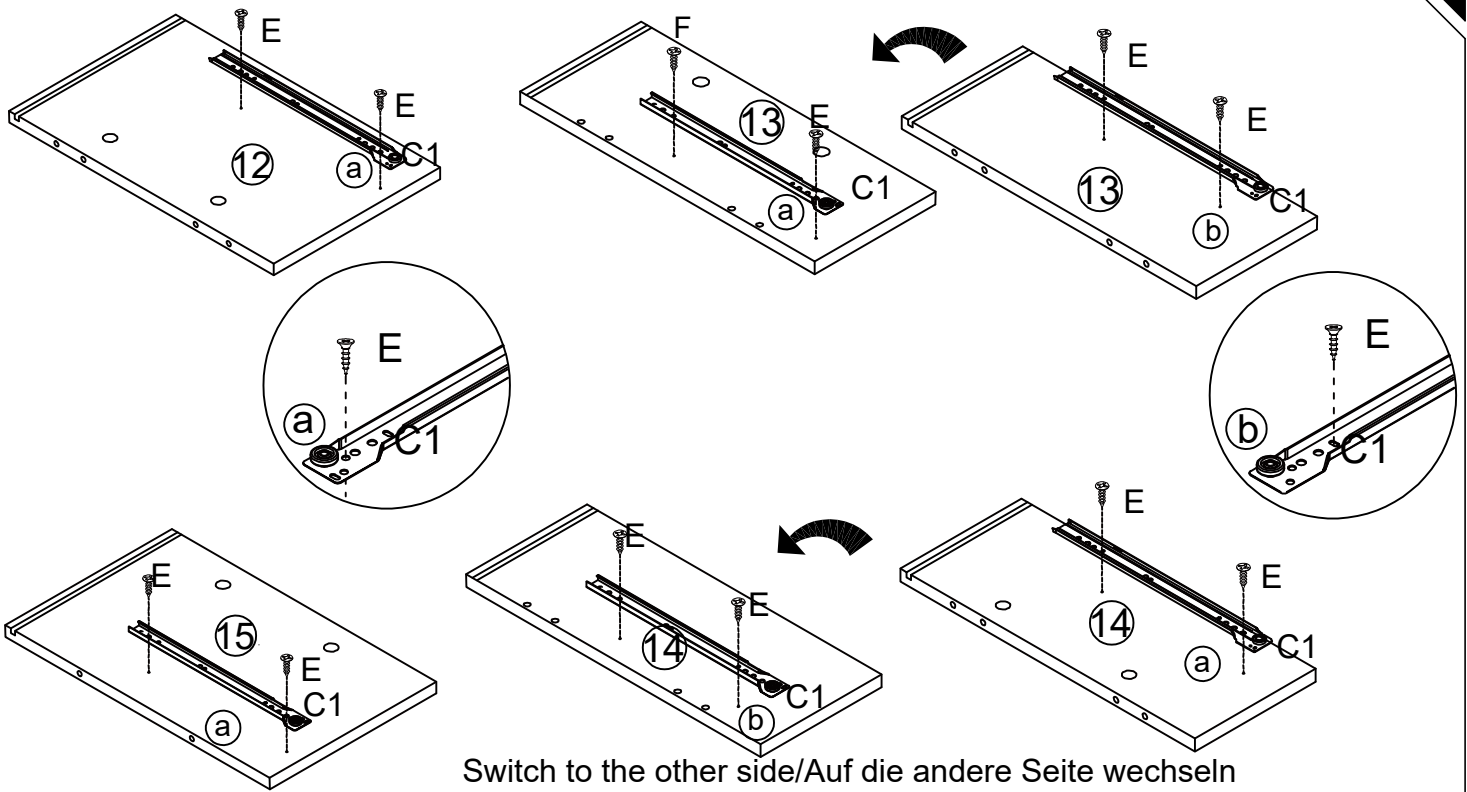


B x 2
M8*40



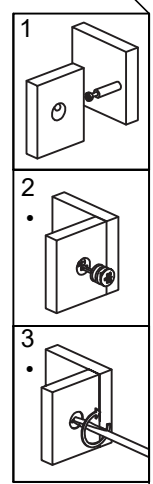
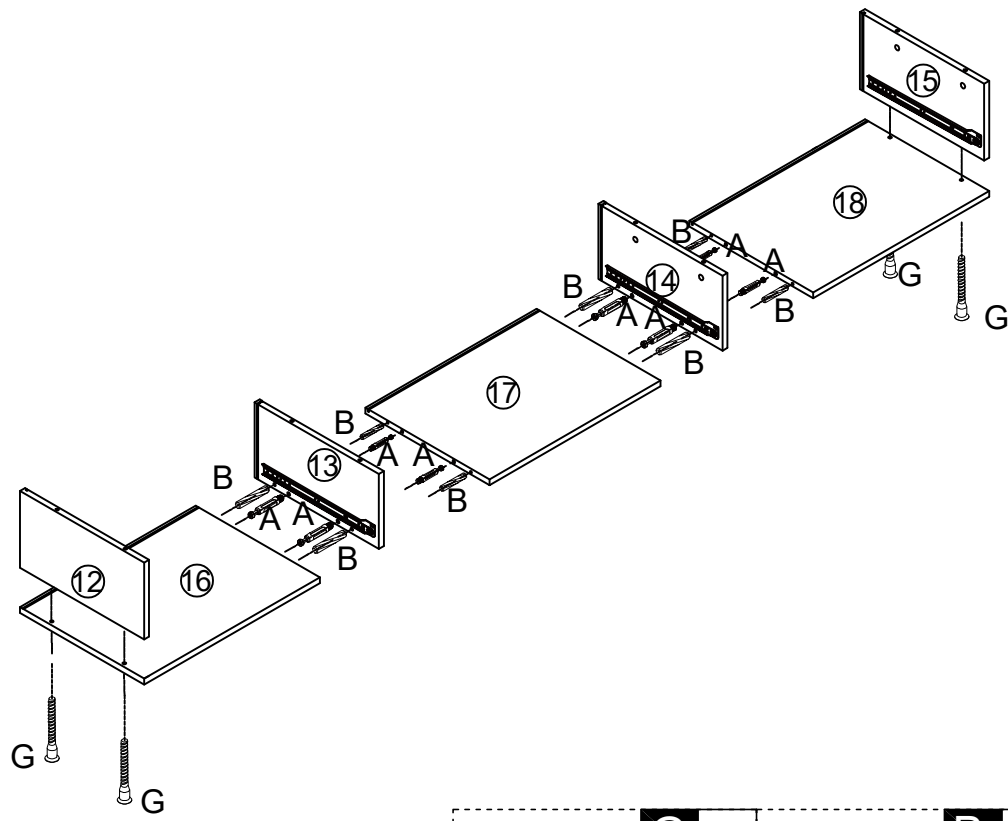
A x 4

Switch to the other side/Auf die andere Seite wechseln

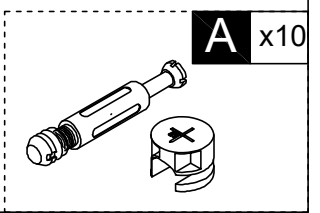
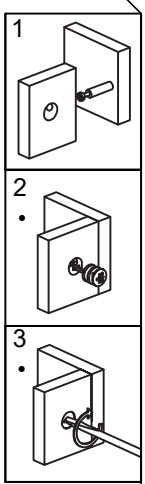
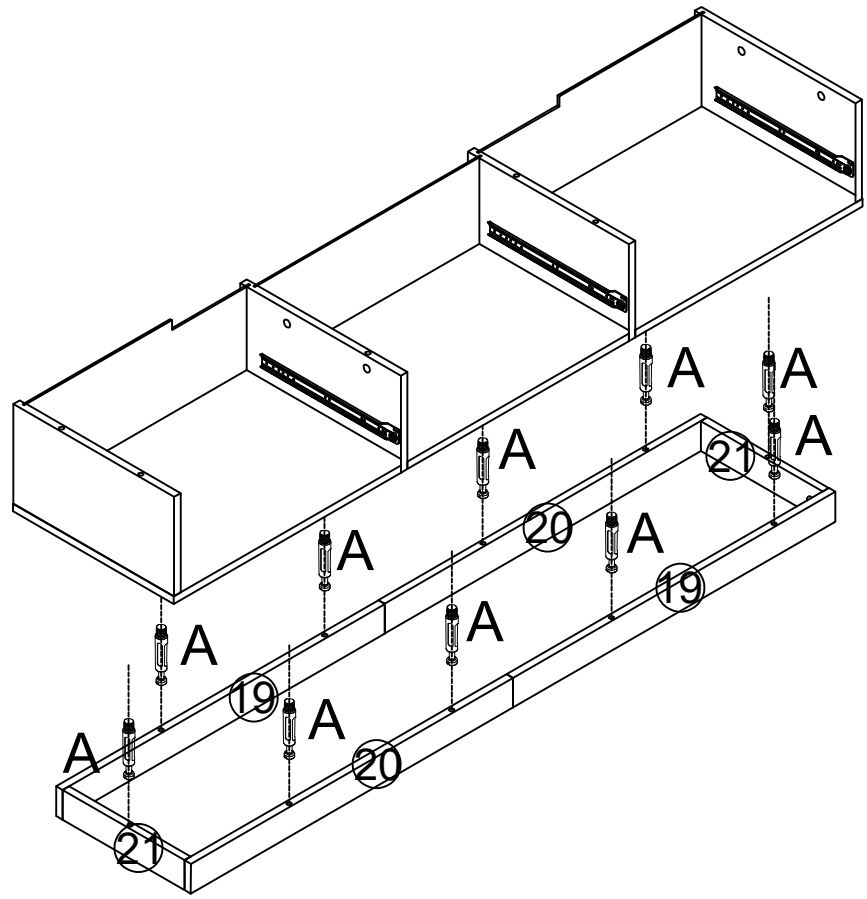
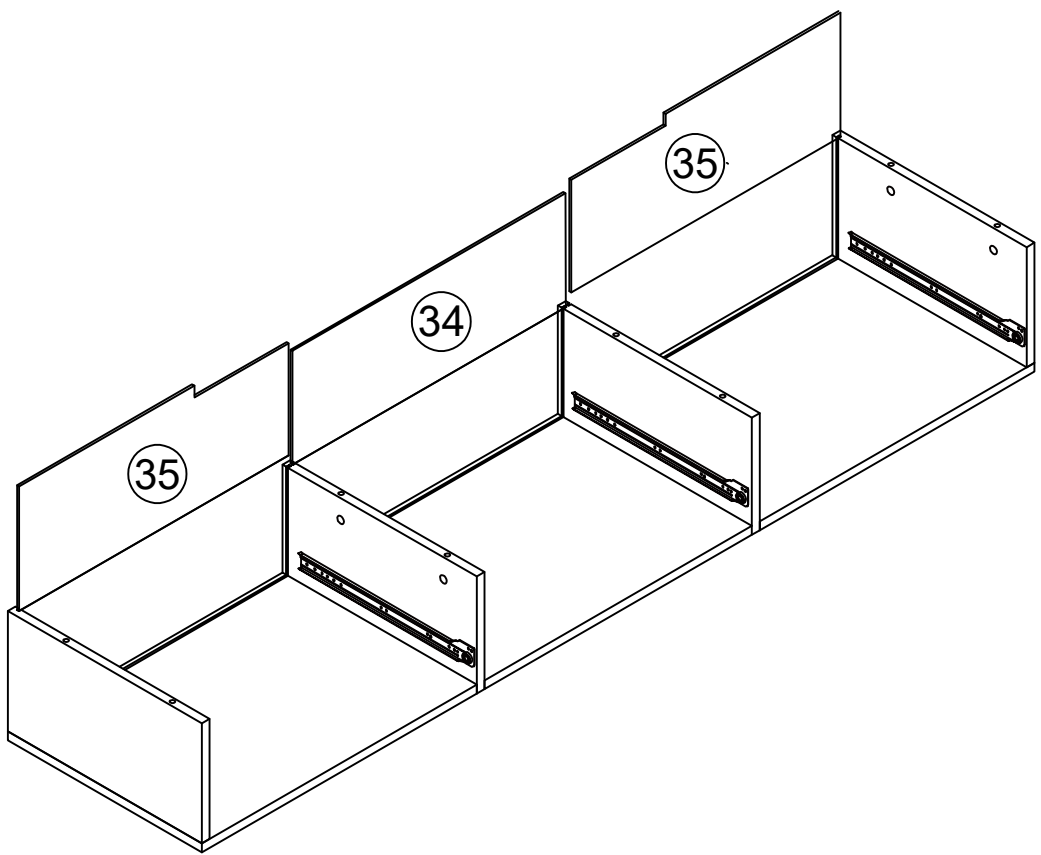


Switch to the other side/Auf die andere Seite wechseln

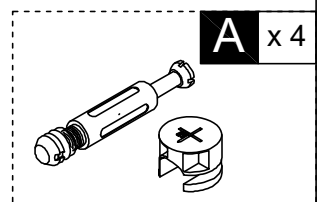
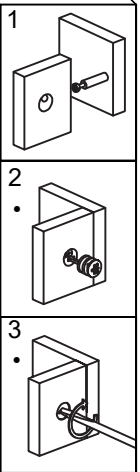
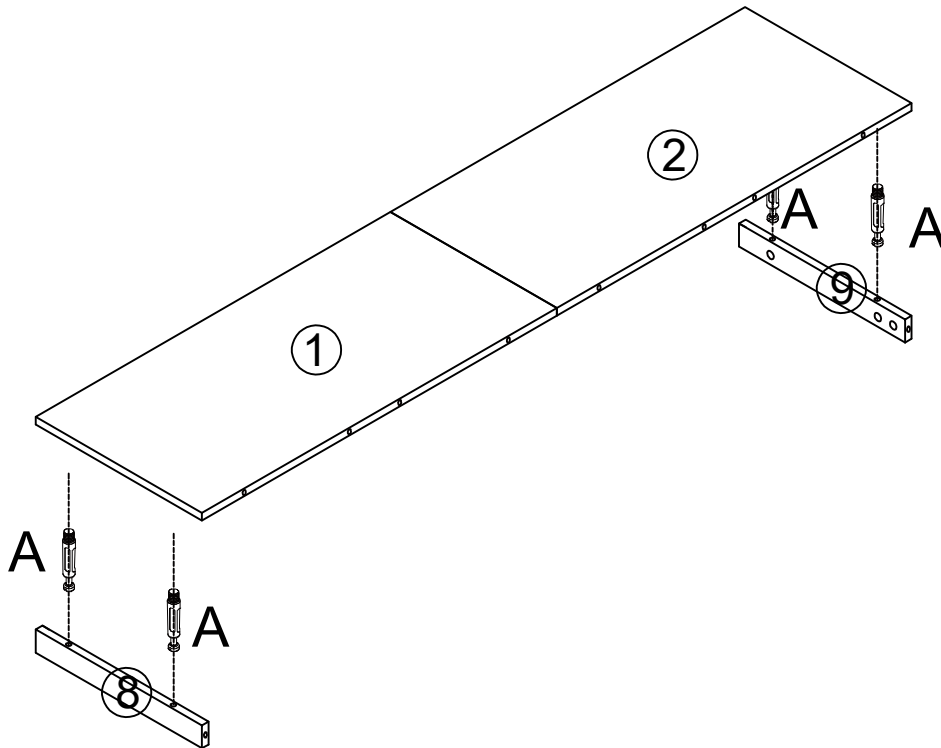
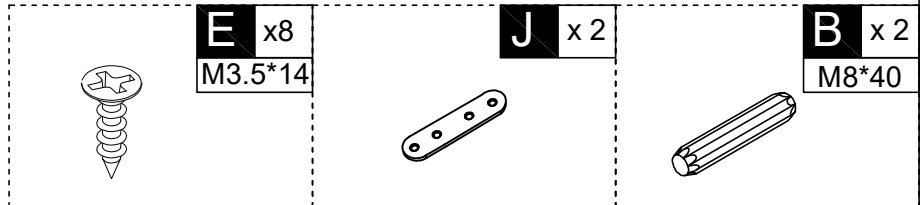
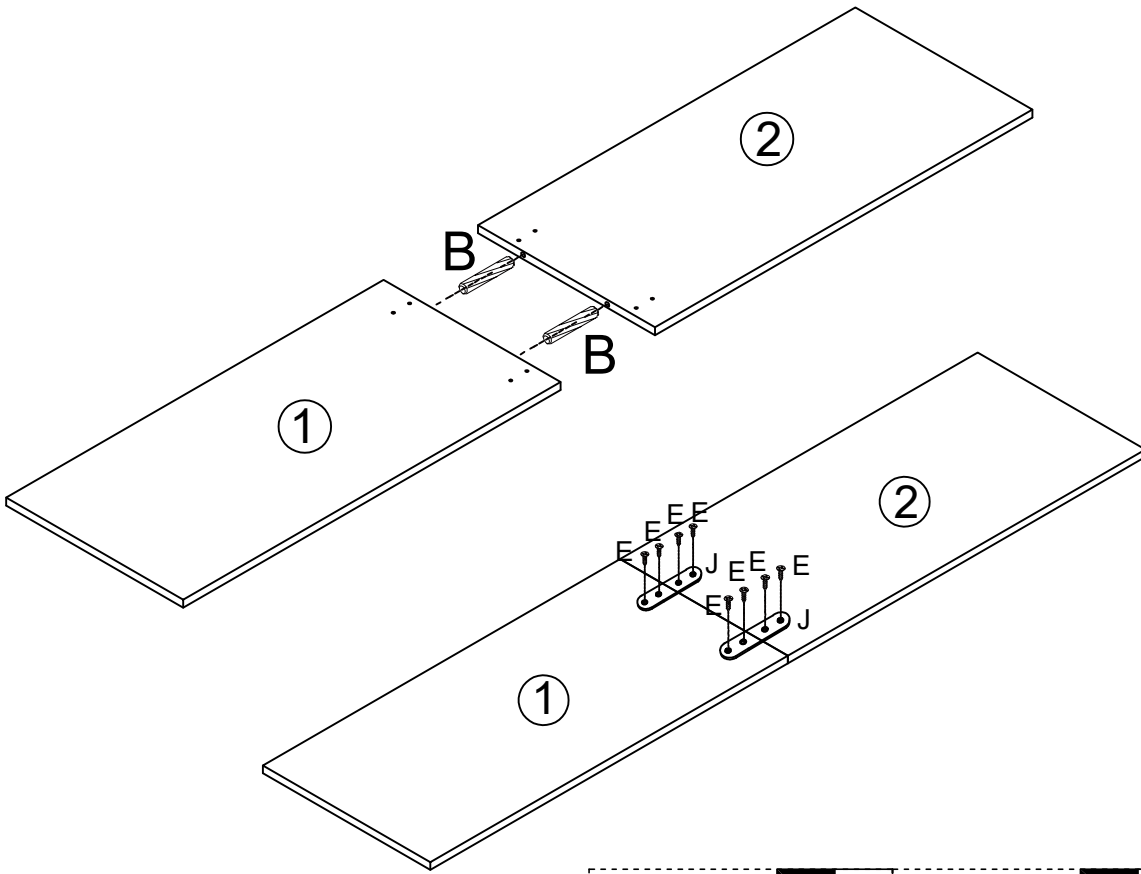
<p>C1 x3 300mm</p>	<p>E x12 M3.5*14</p>
-------------------------------	---------------------------------

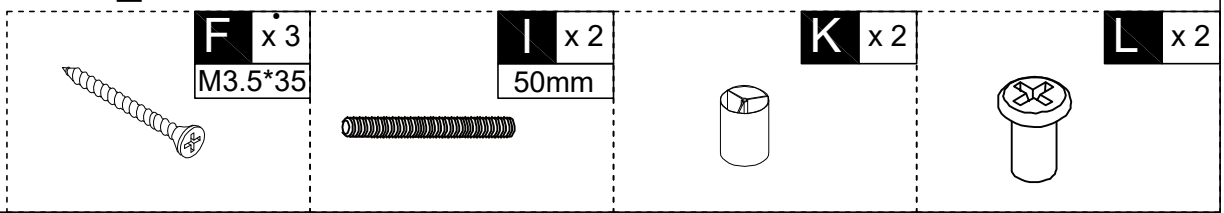
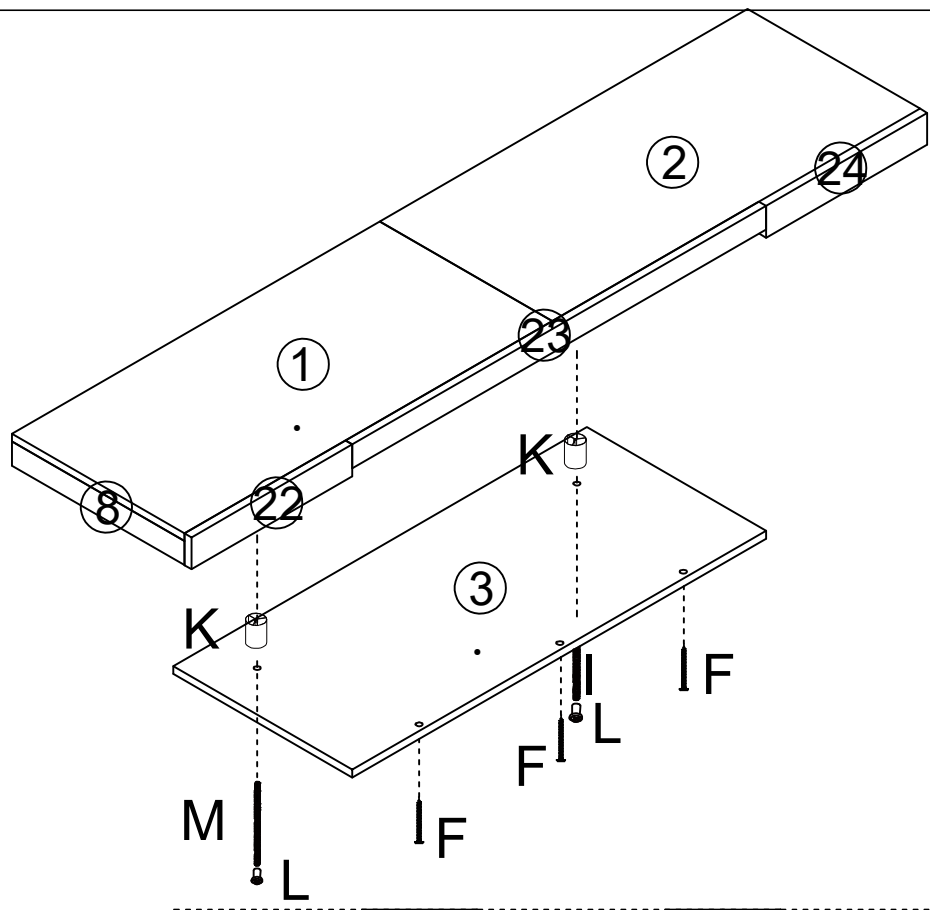
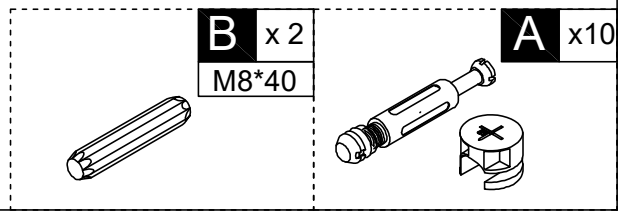
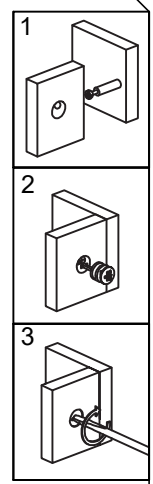
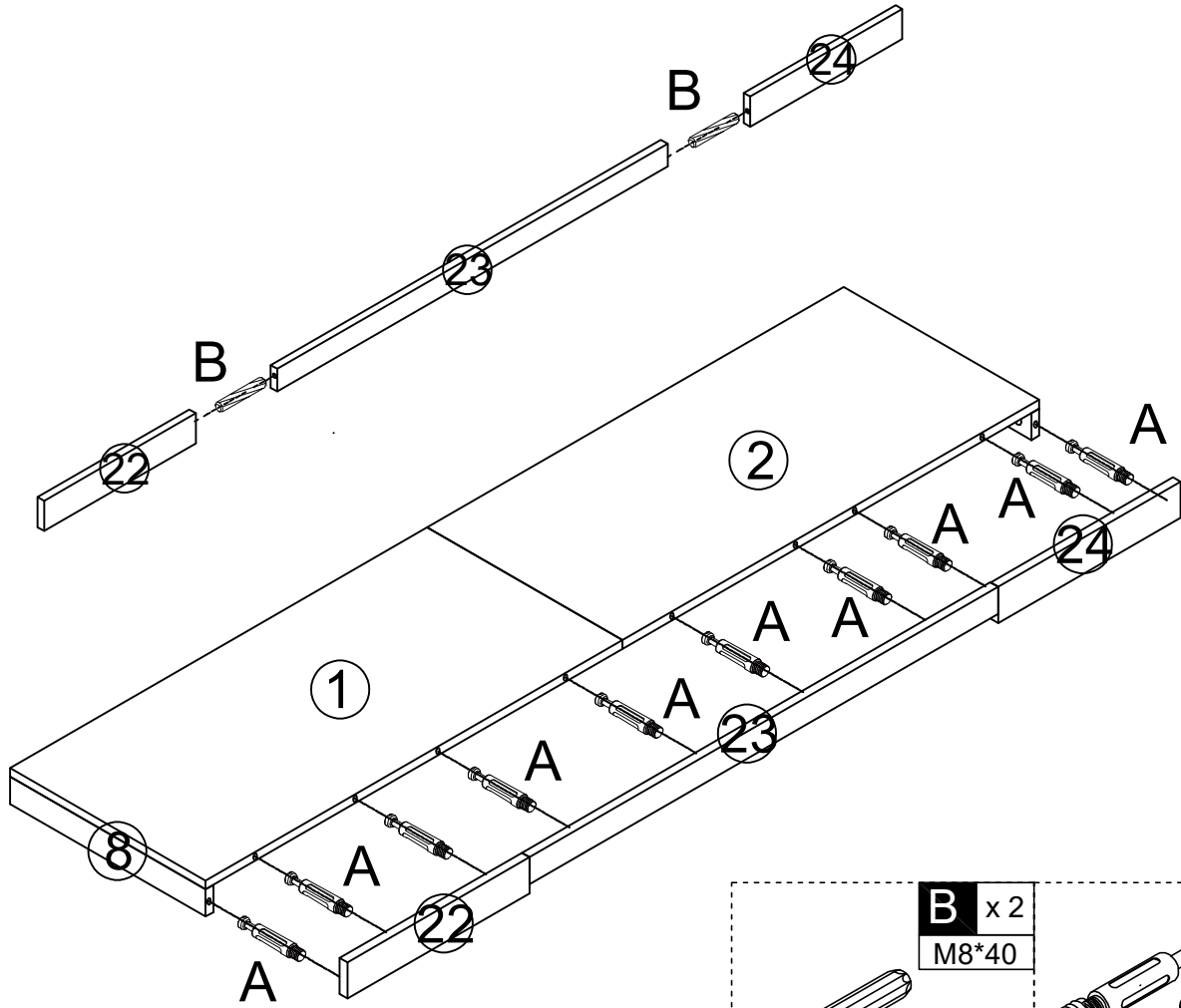


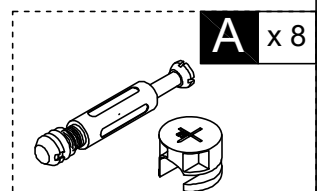
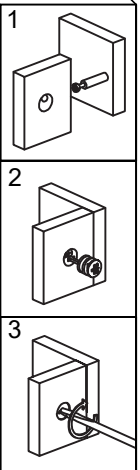
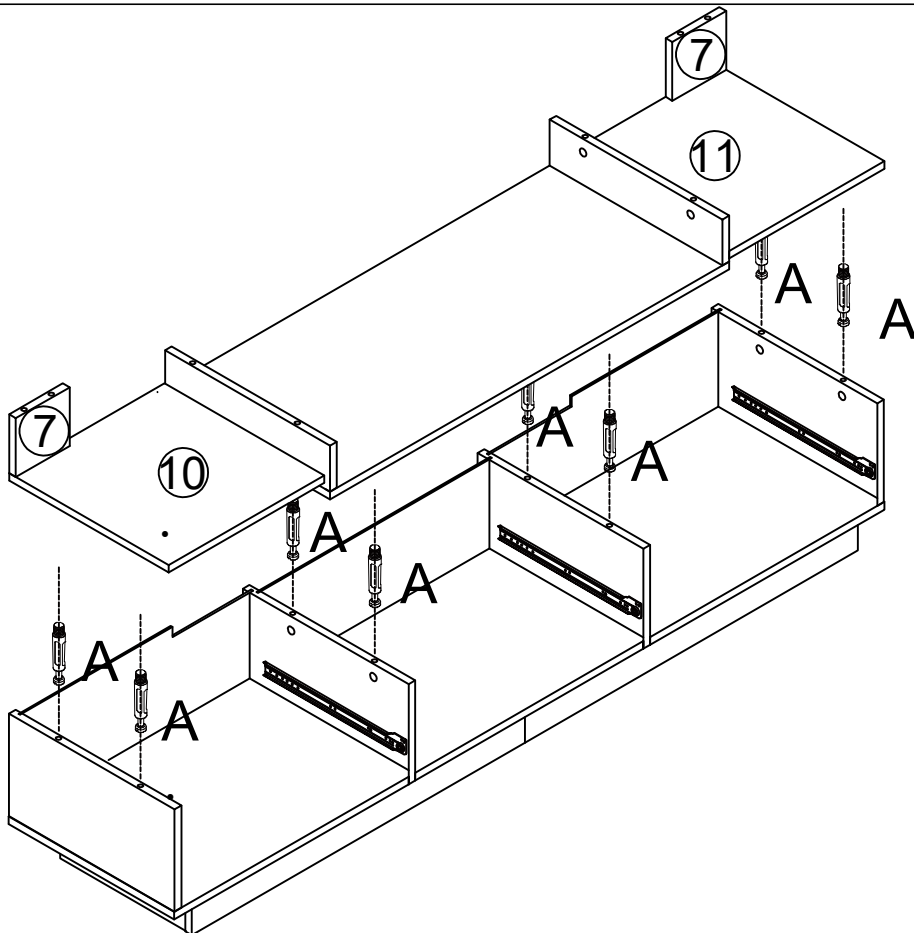
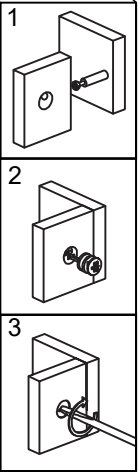
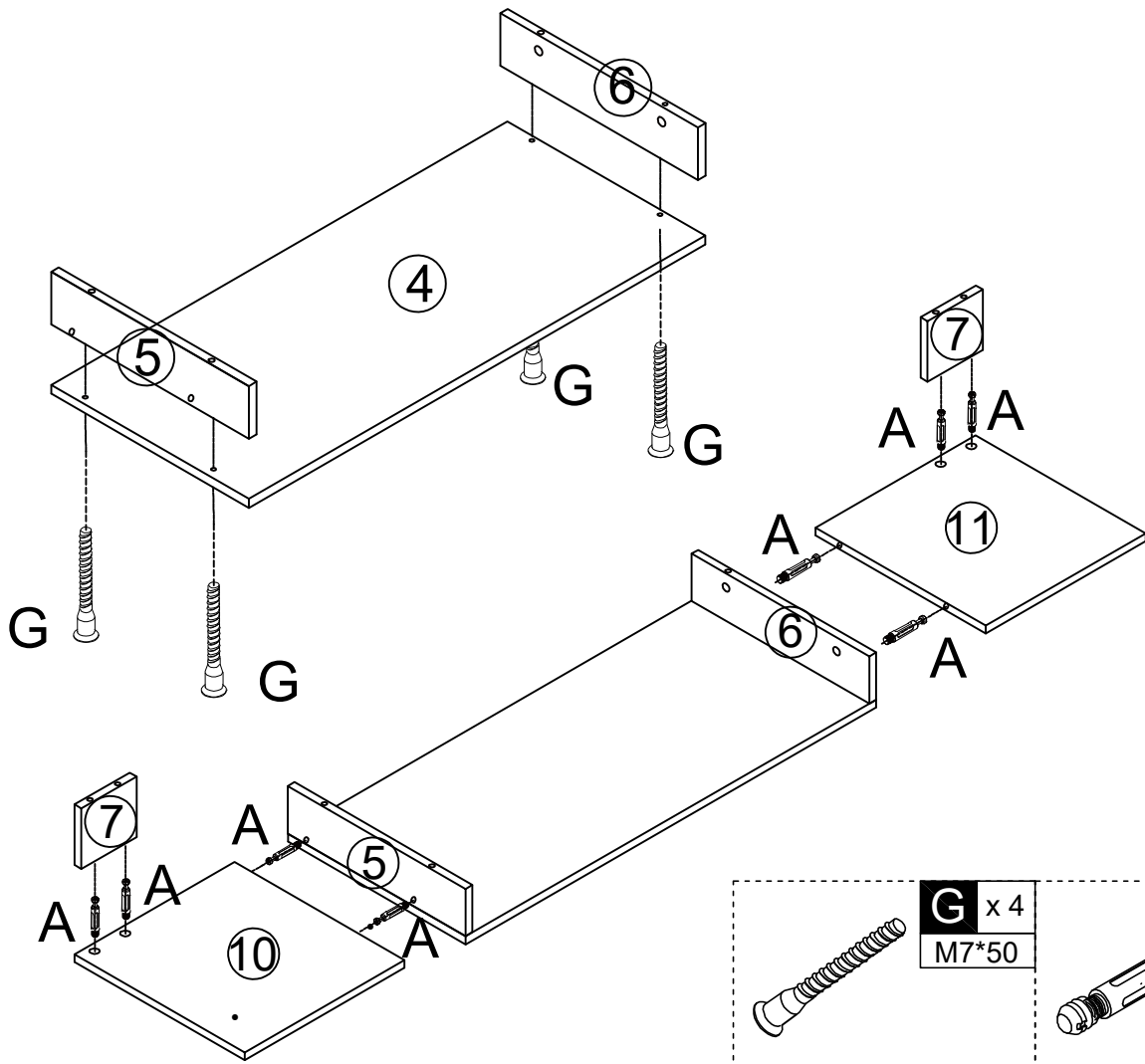
<p>G x4 M7*50</p>	<p>B x8 M8*40</p>	<p>A x8</p>
------------------------------	------------------------------	--------------------

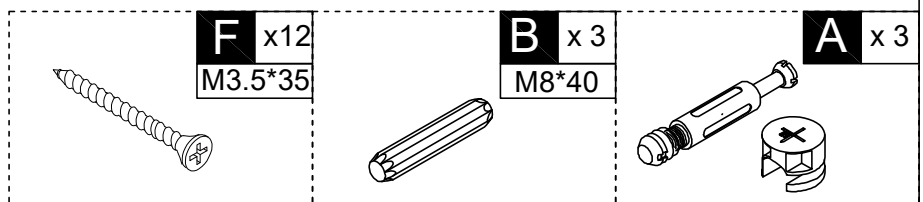
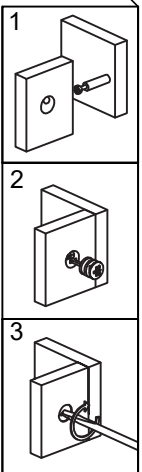
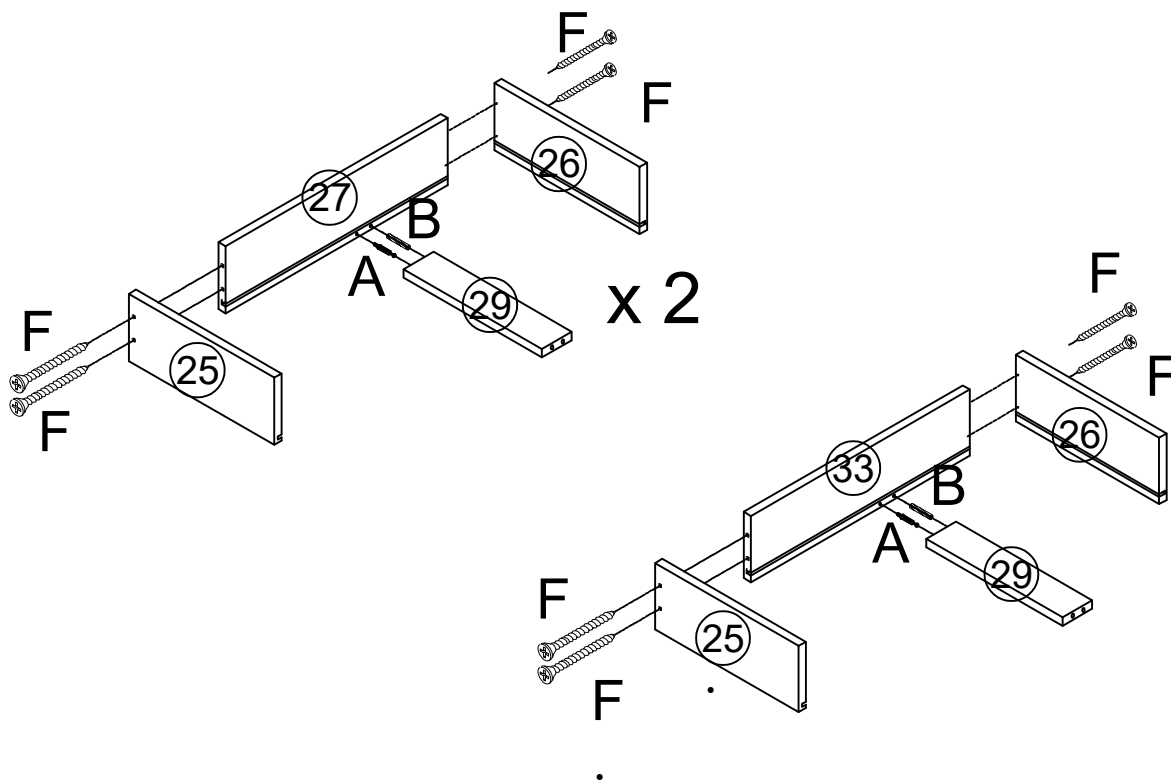
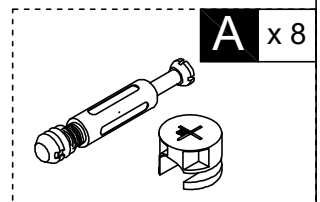
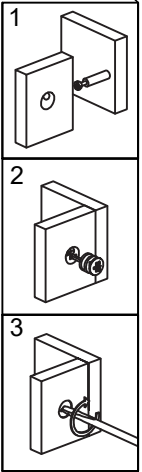
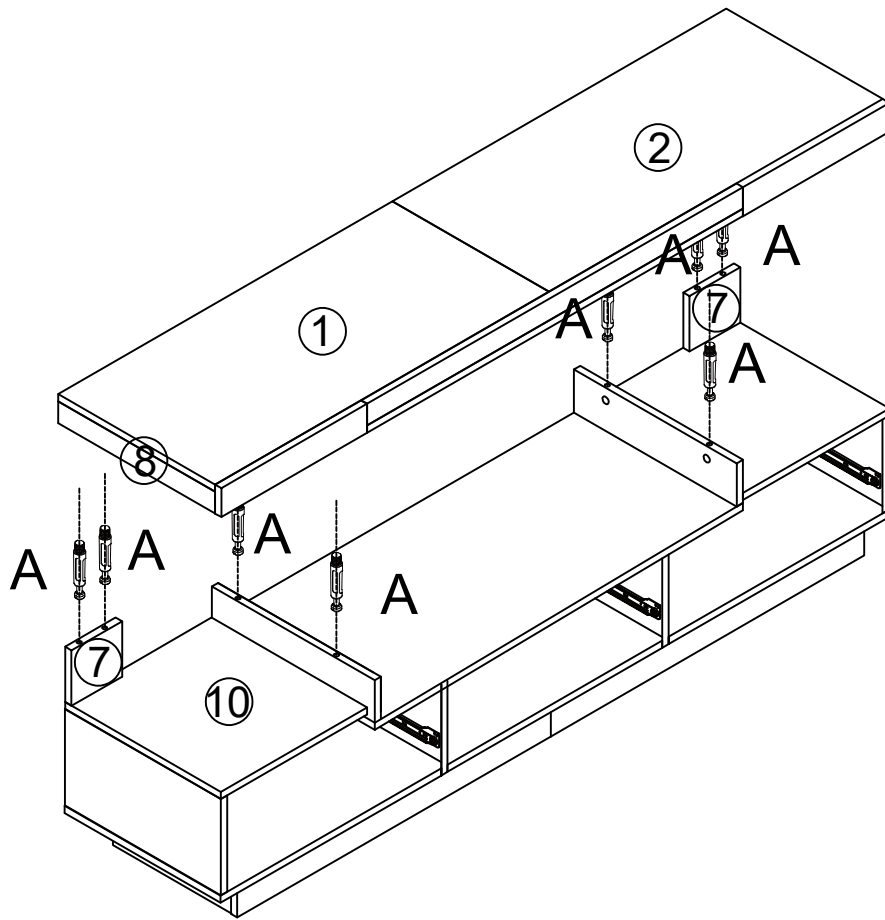


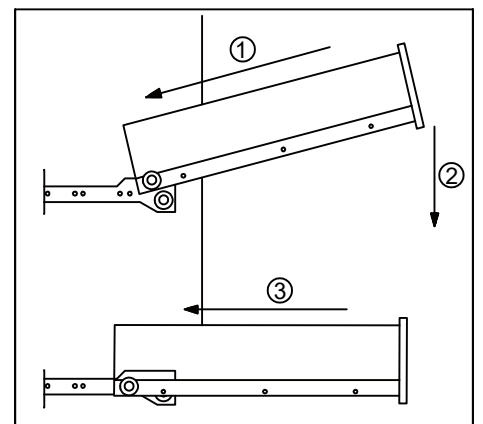
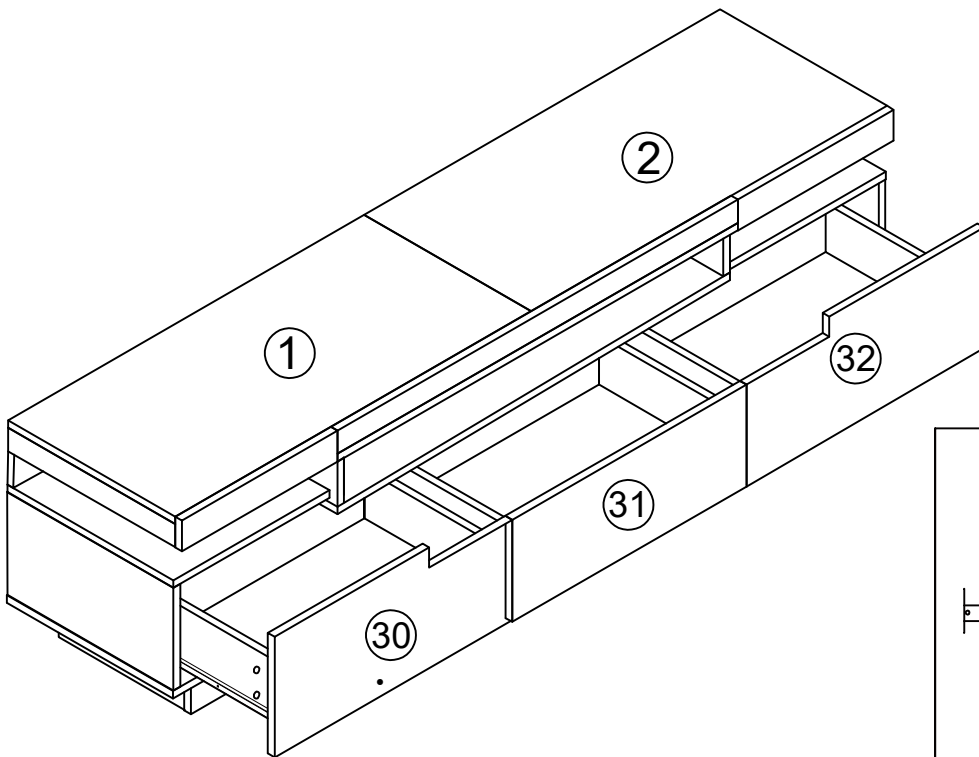
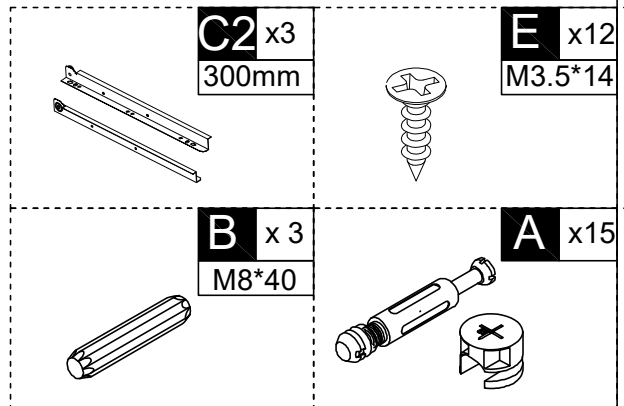
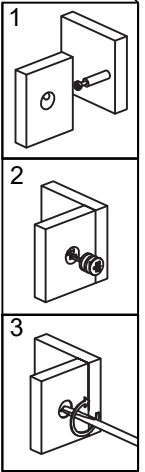
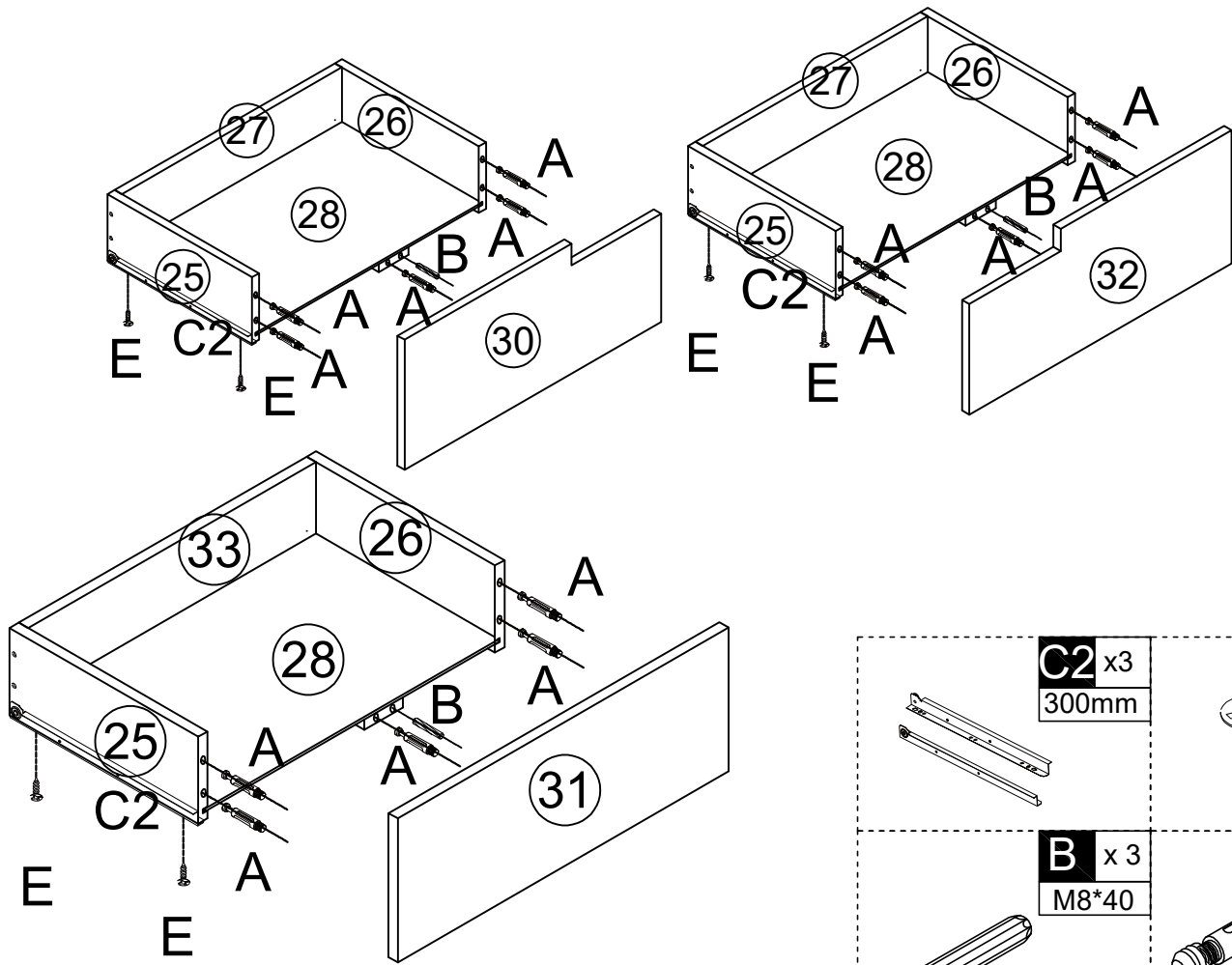
A x10



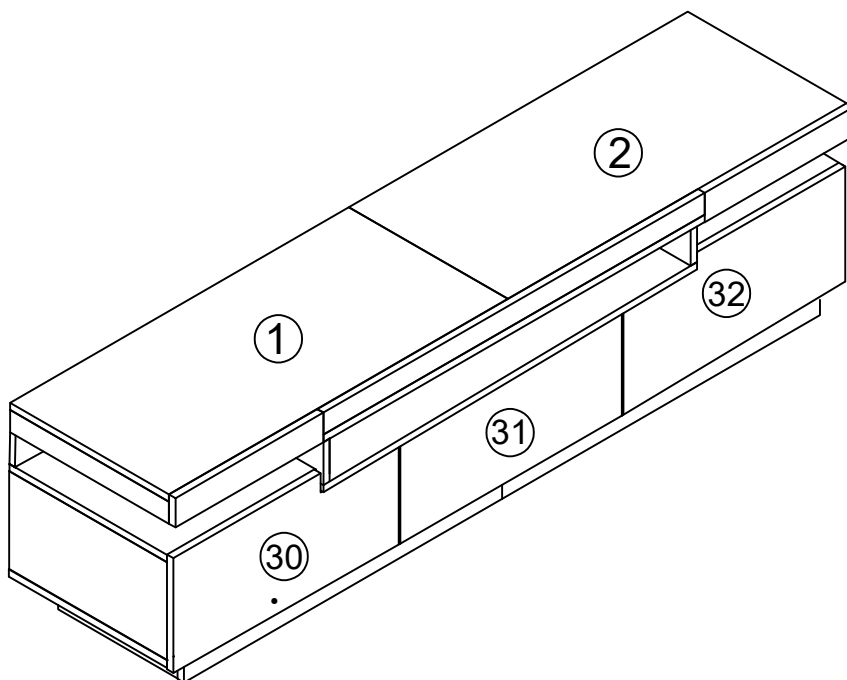
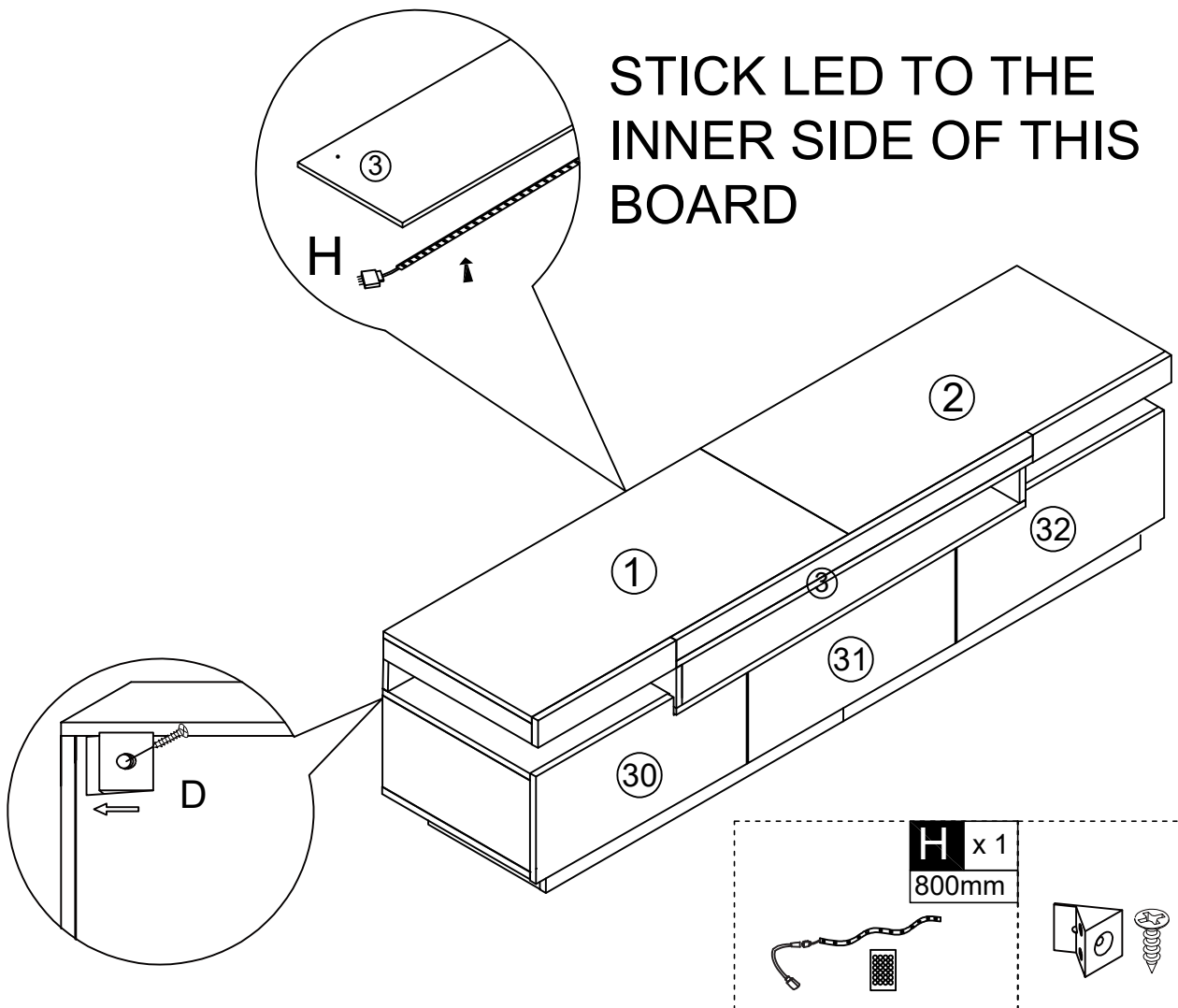








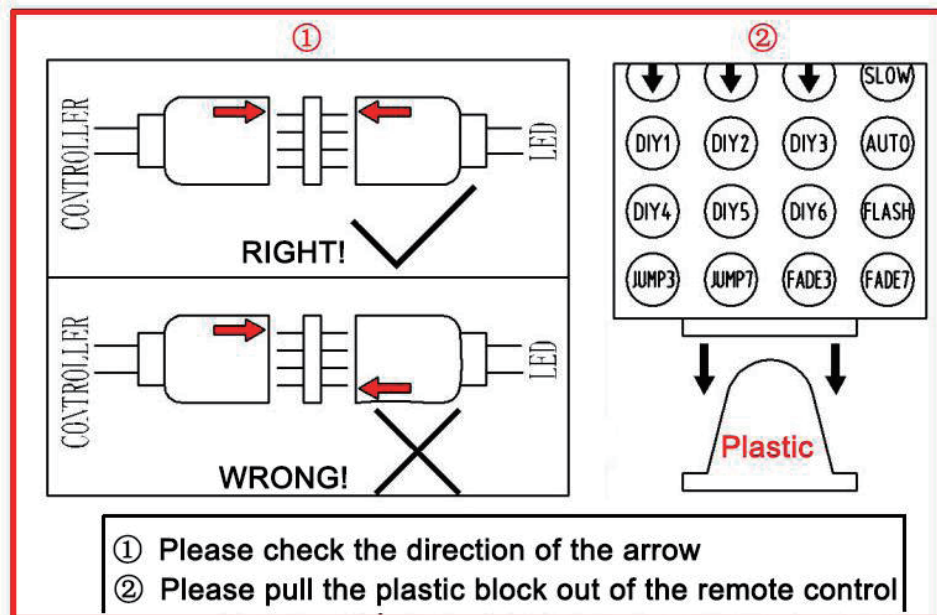
STICK LED TO THE
INNER SIDE OF THIS
BOARD



LED Light

If you can't let the lights work successfully, please check the following:

1. Please check the direction of the connect, try it in the opposite direction, according to the following picture.
2. Please check the remote control, it need you to tear down the plastic septum before use it.
3. Don't let the remote control too far from the receiver, make sure there is no obstruction between them.
4. Please note that for transportation safety,the remote control does not contain batteries;the battery model is:CR2025



LED-Licht

Wenn Sie die Lichter nicht erfolgreich arbeiten lassen können, überprüfen Sie bitte Folgendes:

- 1. Bitte überprüfen Sie die Verbindungsrichtung, versuchen Sie es in der entgegengesetzten Richtung, gemäß dem folgenden Bild.**
- 2. Bitte überprüfen Sie die Fernbedienung. Sie müssen die Kunststoffscheidewand abreißen, bevor Sie sie verwenden.**
- 3. Lassen Sie die Fernbedienung nicht zu weit vom Receiver entfernt, stellen Sie sicher, dass sich keine Hindernisse dazwischen befinden.**
- 4. Bitte beachten Sie, dass die Fernbedienung aus Gründen der Transportsicherheit keine Batterien enthält; das Batteriemodell ist: CR2025**

LED light

If you cannot make the lights work successfully, please check the following:

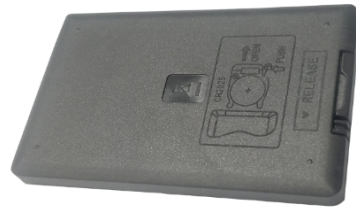
- 1. Please check the connection direction, try in the opposite direction, according to the following picture.**
- 2. Please check the remote control. You need to tear off the plastic partition before using it.**
- 3. Do not leave the remote too far from the receiver, make sure there are no obstacles in between.**
- 4. Please note that the remote control does not contain batteries for transport safety reasons; the battery model is: CR2025**

HINWEIS: Der Akku in der Fernbedienung erfordert, dass Sie Sie selbst kaufen und installieren.
Modell: CR2025 3.V

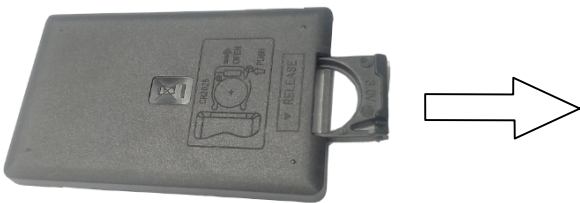
1



2



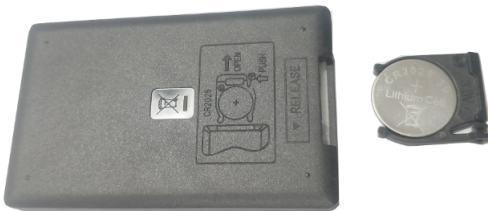
3



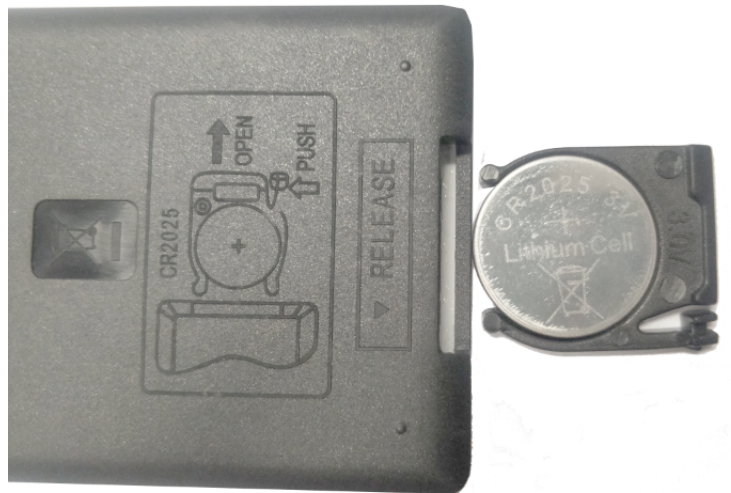
4



5



6

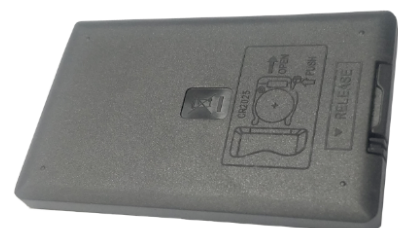


Modell : CR2025 3.V

7



8





PLEASE NOTE: Part number 22.23.24.30.31.32 are covered with a tight plastic protective film.

If there are scratches on the product after disassembly, please don't worry, it's not product damage.

Please slowly tear off the protective plastic film on the surface along the edge. After peeling off, the product becomes smooth and clean.

Bitte beachten Sie: Teil Nr. 22.23.24.30.31.32 sind mit einer dichten Kunststoffschutzfolie abgedeckt.

Wenn das Produkt nach der Demontage Kratzer aufweist, machen Sie sich bitte keine Sorgen, es handelt sich nicht um einen Produktschaden. Bitte ziehen Sie die schützende Kunststofffolie auf der Oberfläche entlang der Kante langsam ab. Nach dem Abziehen wird das Produkt glatt und sauber.



SHENZHEN HTT TECHNOLOGY CO.,LTD.

HOTLINE: 400-6655-351

WWW.HTTPRC.COM

Certificate of Conformity

Certificate : HTT190910345L

Applicant : GY CO., LIMITED

Applicant Address : ROOM 1004, HARVEST BUILDING, 29-37 WING KUT STREET, SHEUNG WAN, HONG KONG

Manufacturer : Shenzhen hehe energy-saving technology Co., Ltd.

Manufacturer Address : Nanshan District Nanshan street,the New South Road, No.1 Hua Chang Ge bottom South manor in Shenzhen city of Guangdong province Chines

Product : LED STRIP

Model No. : 5050CW/W/WW/RGB/RGBW/RGBWW/IC-3/5/12/24-10--240D,
2835CW/W/WW/RGB/RGBW/RGBWW/IC-3/5/12/24-10--240D,
5730CW/W/WW/RGB/RGBW/RGBWW/IC-3/5/12/24-10--240D,
XXXXCW/W/WW/RGB/RGBW/RGBWW/IC-X/X/XX/XX-X—XXXD
(X represents 0-9),
501 502 503 505 506 507 508 509 510 512 XXX (X represents 0-9)

Trademark : Story behind

The above products have been tested by us with listed standards and found in compliance with the council LVD (Low Voltage Directive) 2014/35/EU. It is possible to use CE marking to demonstrate the compliance with this Low Voltage Directive.

Test standards:	Report(s) Number	Issued By	Issued Date
EN 60598-2-20:2015 EN 60598-1:2015+A1:2018 EN 62031:2008+A1:2013+A2:2015 EN 62493:2015 EN 62471:2008 & IEC/TR 62778:2014	HTT190910345LR	HTT	Sep.20,2019

This certificate of conformity is not transferable and based on an evaluation of a sample of the above mentioned product.

Authorized Signer:

Kevin Yang

Kevin Yang/Senior Manager



Date: Sep.20,2019

TEL: 0755-23595200 FAX: 0755-23595201

1F, B BUILDING, HUAFENG INTERNATIONAL ROBOTICS INDUSTRIAL PARK, GUSHU, XIXIANG STREET, BAO'AN DISTRICT, SHENZHEN



SHENZHEN HTT TECHNOLOGY CO.,LTD.

HOTLINE: 400-6655-351

WWW.HTTPRC.COM

Certificate of Conformity

Certificate No. : HTT190910345E

Applicant : GY CO., LIMITED

Applicant Address : ROOM 1004, HARVEST BUILDING, 29-37 WING KUT STREET, SHEUNG WAN, HONG KONG

Manufacturer : Shenzhen hehe energy-saving technology Co., Ltd.

Manufacturer Address : Nanshan District Nanshan street,the New South Road, No.1 Hua Chang Ge bottom South manor in Shenzhen city of Guangdong province Chinese

Product : LED STRIP

Model No. : 5050CW/W/WW/RGB/RGBW/RGBWW/IC-3/5/12/24-10--240D,
2835CW/W/WW/RGB/RGBW/RGBWW/IC-3/5/12/24-10--240D,
5730CW/W/WW/RGB/RGBW/RGBWW/IC-3/5/12/24-10--240D,
XXXXCW/W/WW/RGB/RGBW/RGBWW/IC-X/X/XX/XX-X—XXXD
(X represents 0-9),
501/502/503/505/506/507/508/509/510/512/XXX (X represents 0-9)

Trademark : Story behind

The above products have been tested by us with listed standards and found in compliance with the council EMC 2014/30/EU. It is possible to use CE marking to demonstrate the compliance with this EMC.

Test standards:	Report(s) Number	Issued By	Issued Date
EN 55015: 2013+A1:2015 EN 61547:2009 EN 61000-3-2: 2014 EN 61000-3-3: 2013	HTT190910345ER	HTT	Sep.20,2019

This certificate of conformity is not transferable and based on an evaluation of a sample of the above mentioned product.



Authorized Signer:

Kevin Yang
KevinYang/Senior Manager



Date: Sep.20,2019



CERTIFICATE OF CONFORMITY

Electromagnetic Compatibility Regulations 2016


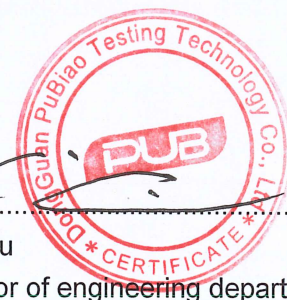
This Certificate of Conformity is hereby issued to the product designated below:

Certificate No...... : 21EP12116E01
Report No...... : EP2112116E01
Date Issue. : 2022-01-17
Applicant's name : Huizhou Guoatong Technology Co., Ltd
Address : 4F(plant E), 4F(Plant C), 4F&5F(plant B), 2 Runze Rd. Huinan South High-tech Industrial Park. Huiao Avenue. Huizhou, Guangdong, China
Manufacturer's name : Same as applicant
Address : Same as applicant
Product Description..... : POWER ADAPTER
Model(s)/Type References : GA-XXXYYYYW, GAT-XXXYYYYW
(“XXX”, “YYYY” and “W” are variables, see following page for details)
Parameters..... : Input: 100-240V~, 50/60Hz, 0.6A Max
Output: 3.0-24.0Vdc, 0100-2000mA, 12.0W Max.
Standard(s) : BS EN 55032:2015+A11:2020
BS EN 55035:2017+A11:2020
BS EN IEC 61000-3-2:2019+A1:2021
BS EN 61000-3-3:2013+A1:2019

On the basis of the referenced test report(s), sample(s) tested of the above product have been found to comply with the standards harmonized with the directives listed on this verification at the time the tests were carried out. Other standards and Directives may be relevant to the product. This verification is part of the full test report(s) and should be read in conjunction with it(them).

Once compliance with all product relevant UKCA mark directives are verified, including any relevant e.g. risk assessment and production control, the manufacturer may indicate compliance by signing a Declaration of Conformity themselves and applying the mark to products identical to the tested sample(s).

Approved By


Eric Liu
Director of engineering department



CERTIFICATE OF CONFORMITY

Electromagnetic Compatibility Regulations 2016

Appendix of Certificate No.: 21EP12116E01

Table A: Definition of variables

Variable:	Range of variable:	Content:
XXX	030-240	Which stands for the rated output Voltage from 3.0Vdc to 24.0Vdc, minimum step by 0.1 Vdc.
YYYY	0100-2000	Which stands for the rated output current from 100mA to 2000mA, minimum step by 100mA.
W	V, Y	"V" "Y" means UK plug

Table B: Model list and output rating

Model	Rated output voltage (VDC)	Rated output current (mA)	Max. rated output power (W)	Transformer (T1)
GA-XXXYYYYYW, GAT-XXXYYYYYW	3.0-5.0	0100-2000	10.0	EF15-5V
	5.1-12.0	0100-1000	12.0	EF15-12V
	12.1-24.0	0100-1000	12.0	EF15-24V

