

# Cordless Zebra Shade Installation Instructions

## LAYERED SHADE

Thank you for purchasing our product. We want to reassure you that our main design focus with window blinds/shades is child safety, and we guarantee this with your new, Cordless Sheer Celestial Shades. In addition, we hope that you enjoy its ease of use and installation. We look forward to your continued patronage in the future.

## SAFETY INFORMATION

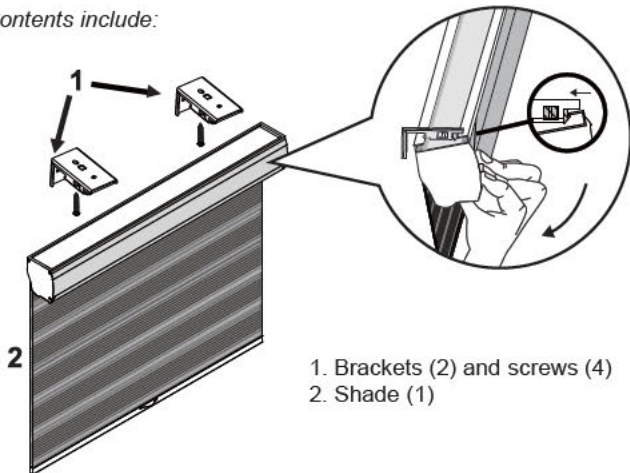
- Read all instructions, warning tags, and labels provided with your product to avoid injury. Keep this manual.
- The Sheer Celestial is cordless and 100% child-safe.

## INSTALLATION INSTRUCTIONS

### Step 1. Check Package Contents

Before installing your shade, make sure all parts listed below are present. If any part is missing or damaged, please do not assemble, install, or operate.

Contents include:



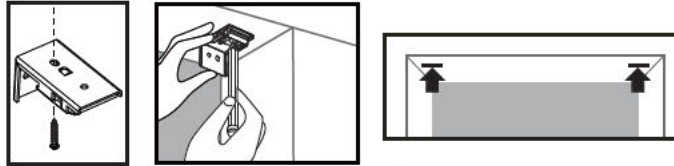
### Step 2. Gather Additional Tools Required

The following tools are not included, but will be needed to complete your installation.

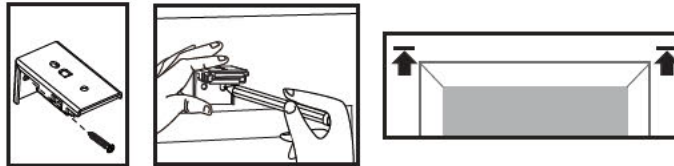
- Drill with 1/16-inch bit
- Screwdriver
- Level
- Pencil
- Step ladder

### Step 3. Begin Installation

- Mark location of shade and brackets.



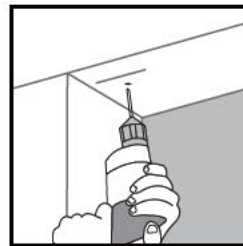
Inside Mount



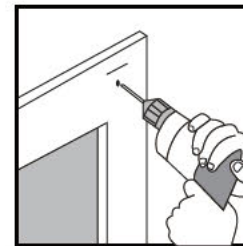
Outside Mount

- Note that the shade may be installed either inside or outside the window frame.
- Tip: Make sure the mounting brackets and/or mounting surface are level, otherwise your shade could telescope during the lifting operation.
- To ensure proper functioning, brackets must be level.

### Step 4. Drill Holes

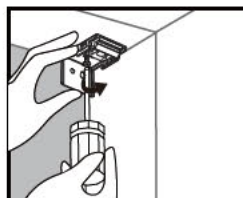


Inside Mount

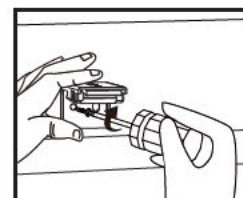


Outside Mount

### Step 5. Screw in Brackets



Inside Mount

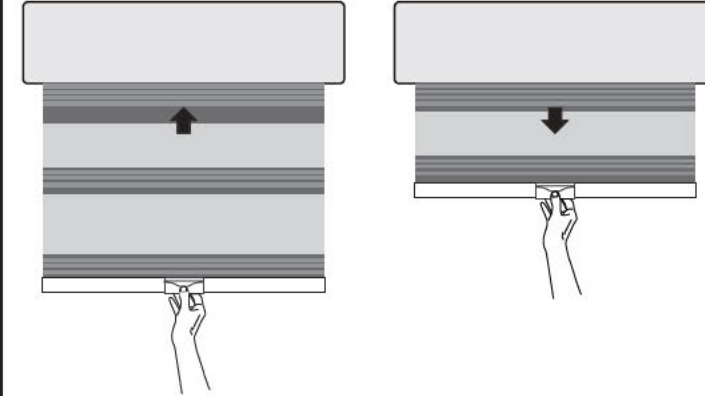


Outside Mount

### Step 6. Operate the Shade

Standard lift

- To prevent damage to the material, use care when raising and lowering shade.



## CLEANING INSTRUCTIONS



Lightly vacuum with a soft brush attachment or wipe with a duster.