

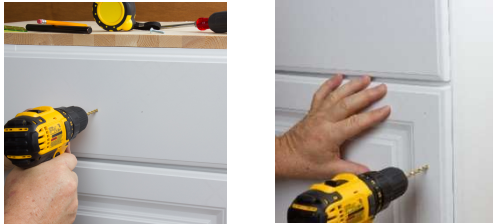
Installation Kit Instructions

Step 1 Decide the location of the cabinet hardware knob/pull you would like to install.

Step 2 Carefully measure and mark each hole location to the dimensions of your knob or pull. Templates are pre-marked for 3", 3.5", 96mm, (3.75") and 4". For wider pulls, just measure out from the center and move template left and right to the desired width.



Step 3 Using a 3/16" bit, carefully drill through the cabinet or drawer – using minimal pressure to reduce splintering on the backside of the surface. To prevent damage while drilling, place masking tape in the approximate hole location prior to measuring.



Step 4 Install your GlideRite cabinet hardware using a #2 Phillips screwdriver. Be careful not to overtighten screws.



Tips

- You can raise the template by placing a strip of wood between the template and the cabinet door or drawer.
- The 1-inch screw(s) included with your GlideRite hardware are adequate for most 3/4" doors and drawers; for thicker drawers, purchase #8-32 screws 1/4" longer than the thickness of the drawer.
- Measure twice to assure cabinet hardware positioning.
- Mark all your holes first and then stand back and look at your cabinets to make sure you have placed them where you want them before drilling.