

Model No.: LV-H133

levoit

Tower HEPA Air Purifier

Questions or Concerns?

Please contact us Monday - Friday 9:00 am - 5:00 pm PT
at support@levoit.com or **(888) 726-8520**.

THANK YOU FOR PURCHASING THE LV-H133 TOWER HEPA AIR PURIFIER BY LEVOIT!

Should you have any questions or concerns regarding your new product, feel free to reach out to us at **support@levoit.com**. We hope you enjoy your new product!

GET STYLE INSPIRATION

Find @LevoitLifestyle on social media for wellness + style inspiration. We make every space mindful and chic.

@LevoitLifestyle
#LevoitLove • #LevoitLifestyle

TABLE OF CONTENTS

Package Contents	3
Specifications	3
Safety Information	4
Getting to Know Your Air Purifier	5
LED Display	5
Getting Started	6
· About the Safety Trigger	7
Operation	7
· General Operation	7
· Button Controls & Functions	8
· Air Quality Indicator	9
· Memory Function	9
Keeping Things Clean	9
· When Should I Replace the Air Filter?	9
· Replacing the Air Filter	10
· Resetting the Air Purifier	11
· Cleaning the Dust Sensor	11
Troubleshooting	12
Warranty Information	14
Customer Support	14

PACKAGE CONTENTS

- 1 x LV-H133 Tower HEPA Air Purifier
- 1 x Filter (Pre-installed)
- 1 x User Manual
- 1 x Caution Card

SPECIFICATIONS

Power Supply	AC 120V / 60Hz
Rated Power	33W
Applicable Area	≤ 538 ft ² (50 m ²)
Operating Conditions	Temperature: 14°F~104°F (-10°C~40°C) Humidity: ≤ 95% RH
Noise Level	≤ 54dB
CADR (Clean Air Delivery Rate)	235 CFM (400 m ³ /h)
Standby Power	< 0.8W

SAFETY INFORMATION

IMPORTANT: Always follow the instructions and safety guidelines in this manual.
Only use your Levoit Tower HEPA Air Purifier as described in this manual.

General Safety

- Ensure the plug fits properly into a polarized power socket.
- **DO NOT** operate if cord or plug is damaged.
- **DO NOT** handle with wet hands. Dry your hands before handling the air purifier.
- **DO NOT** immerse the air purifier in water or liquid.
- **DO NOT** use the air purifier in wet or humid environments.
- **DO NOT** use the air purifier outdoors.
- **DO NOT** use the air purifier in a room with major indoor temperature changes. This may cause condensation to build up inside the appliance.
- **DO NOT** use the air purifier in an enclosed space where toxic, flammable, combustible, or explosive gases or substances are present.
- If you are using the air purifier where oxygen is being administered, make sure the purifier is at least 3-5 feet away from the oxygen tank.
- **DO NOT** insert fingers or objects into the air outlet.
- **DO NOT** allow children to play on or near the air purifier.
Child supervision is required while the air purifier is on.

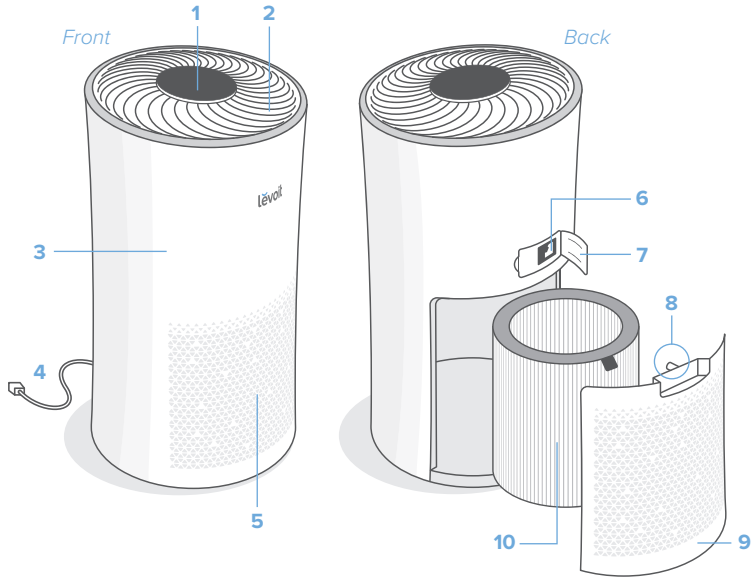
Use & Care

- Place the air purifier on a flat, level, solid surface before operation.
- **DO NOT** place the air purifier near sources of heat, such as open flames, stove tops, ovens, radiators, or computers.
- Place the air purifier so that the power cord easily reaches a standard electrical outlet for a polarized plug.
- **DO NOT** route the cord under carpeting, rugs, furniture, or appliances. Place the power cord away from high-traffic areas.
- **WARNING:** To reduce the risk of fire or electric shock, **DO NOT** use this air purifier with solid-state speed controls (such as a dimmer switch).
- **DO NOT** use an extension cord with this unit.
- **DO NOT** sit on or place anything on top of the air purifier.
- **DO NOT** place the air purifier directly below an air conditioner, to prevent any moisture from getting into the air purifier.
- This air purifier should be inspected frequently. Dirt that has collected should be removed regularly to prevent excessive accumulation that may result in a flashover or fire.
- **DO NOT** clean the appliance with water or any other liquid to avoid electric shock, fires, or injury.
- If the air purifier is damaged, or is not functioning properly, immediately stop use and contact Customer Support (page 14).
- **DO NOT** attempt to repair this device in any way or use any third-party parts to modify the air purifier. Doing so will void your warranty. Contact Customer Support immediately if your device is no longer working.

SAVE THESE INSTRUCTIONS

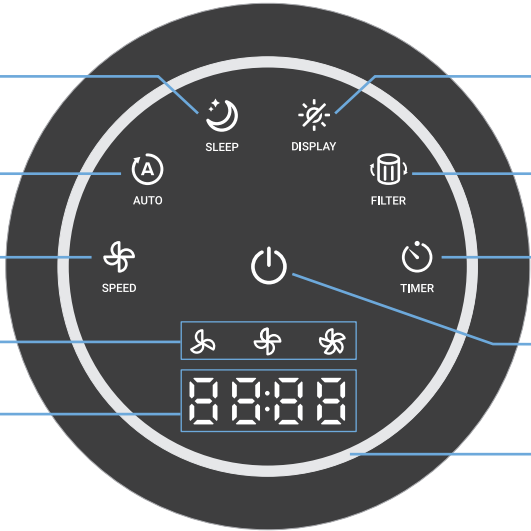
GETTING TO KNOW YOUR AIR PURIFIER

- 1. LED Display
- 2. Air Outlet
- 3. Housing
- 4. Power Cord
- 5. Air Intake
- 6. Dust Sensor
- 7. Dust Sensor Cover
- 8. Safety Trigger
- 9. Filter Cover
- 10. Air Filter



LED DISPLAY

- Sleep Mode Button/Indicator
- Auto Mode Button/Indicator
- Fan Speed Button/Indicator
- Fan Speed Indicator
- Timer Display
- Display Button
- Change Filter Button/Indicator
- Timer Button/Indicator
- Power Button/Indicator
- Air Quality Indicator



GETTING STARTED

1. Pull the handle of the filter cover to open the housing. Remove the air filter from the housing. *[Figure 1.1]*

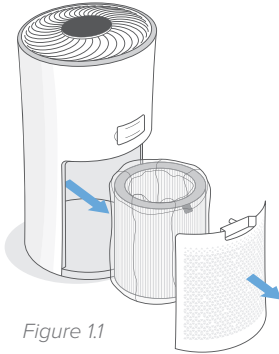


Figure 1.1

2. Take the filter out of its plastic packaging, then reinstall it into the housing. Make sure the black pull tabs on the filter are facing out. *[Figure 1.2]*

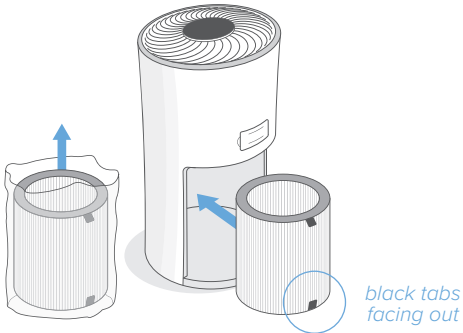


Figure 1.2

3. Replace the filter cover by aligning the bottom portion of the cover with the inlets on the bottom of the housing. *[Figure 1.3]*

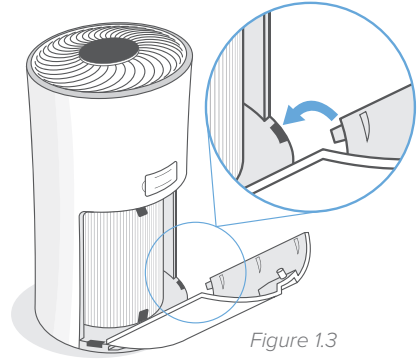


Figure 1.3

4. Once the bottom portion is properly aligned, slowly close the cover by aligning its top part with the inlets at the top of the opening. *[Figure 1.4]*

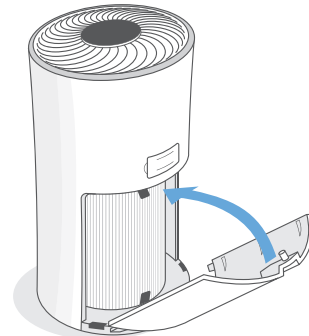


Figure 1.4

NOTE:

- If you are not planning to use the air purifier for a long period of time, we recommend leaving the filter inside its plastic packaging until it is ready to be used. This helps prevent mold from building up on the air filter.
- If the filter cover is not properly installed, the air purifier will not turn on.

About the Safety Trigger

When replacing the filter cover onto the air purifier, always make sure the magnetic safety trigger is properly aligned with its respective area. [Figure 2.1]

NOTE: If the trigger is not properly aligned, the air purifier will not turn on.

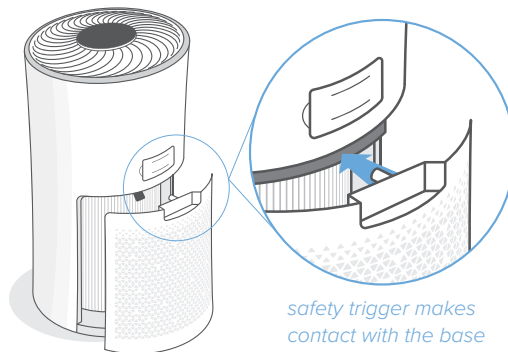





Figure 2.1

OPERATION

General Operation

1. Place the air purifier on a level surface. [Figure 3.1]
2. Plug the air purifier into a powered electrical outlet.
3. Tap  to turn on the air purifier. It will start operating at medium speed.
4. (Optional) Tap  to adjust the fan speed of the air purifier. There are 3 fan speeds to choose from (see **Button Controls & Functions**, page 8).
5. Tap  to turn off the air purifier when you are finished using it.

NOTE: Always allow at least 15 inches (38 cm) of clearance on all sides of the air purifier. [Figure 3.2]

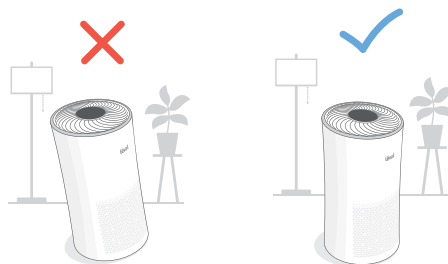


Figure 3.1



Figure 3.2

Button Controls & Functions



Power Button

Turns the air purifier on or off.



Fan Speed Button





Tap  to cycle through the adjustable fan speeds of the air purifier: low, medium, and high (see Chart A below).

Chart A

Fan Speed Indicator	Fan Speed
	Low
	Medium
	High

NOTE:

- The fan speed cannot be adjusted while on Auto or Sleep Modes.
- To effectively clean the air, make sure to keep your windows closed while the air purifier is operating.
- For best results, it is recommended to run the air purifier at maximum speed for 15–20 minutes before using a lower speed setting or setting the air purifier to Auto Mode.



Auto Mode Button


Tap  to activate the Auto (automatic) Mode on the air purifier. This mode automatically adjusts the fan speed of the air purifier according to the current air quality. The air quality indicator around the LED display will also illuminate a certain color based on the air quality and fan speed (see Chart B below).

Chart B

Indicator Color	Air Quality	Fan Speed
Blue	Very Good	Sleep Mode
Green	Good	Low
Orange	Moderate	Medium
Red	Bad	High




Sleep Mode Button

Tap  to activate Sleep Mode on the air purifier. This function sets the air purifier to its lowest speed setting to create a quiet environment while producing clean air.



Display Button



Turns the LED Display on or off while the air purifier is operating.

NOTE: While the display is off, you can tap any button (except for ) to turn on the display.





Timer Button

Allows you to program a timer for 1–12 hours.

1. Tap  repeatedly to choose a time.
2. Once you have reached the desired time, the timer display will flash 5 times before setting.
3. The air purifier will automatically power off once the timer has finished counting down.
4. To cancel the timer, tap  repeatedly until the timer display reads “----”. Wait until “----” flashes 5 times to exit out of the timer function.

NOTE:

- To quickly select a time, press and hold  for 2 seconds, or until the desired time appears on the timer display.
- The timer function will remember your previously programmed time when you press .
- The timer function is available for all modes.

Air Quality Indicator

Outside of Auto Mode, the air quality indicator will also light up to denote the current air quality during normal operation. [Chart C]

Chart C

Indicator Color	Air Quality
Blue	Very Good
Green	Good
Orange	Moderate
Red	Bad

NOTE: It will take 30 seconds for the air purifier to detect the air quality each time it is turned on. The air quality indicator will always light up blue when the air purifier is first turned on. After 30 seconds, the color of the indicator will change based on the detected air quality.

Memory Function

The air purifier will remember its programmed settings when turned off and resume these settings when turned back on.


NOTE: The memory function will not remember the programmed time.

KEEPING THINGS CLEAN

NOTE: It is recommended to clean the pre-filter with a brush or vacuum each month to prevent buildup of hair or dust.



Change Filter Indicator

This indicator will light up red to remind you to **check** the air filter. How soon  turns on depends on how often you use your air purifier. It **does not** necessarily mean it is time to change the filter.

When Should I Replace the Air Filter?

It is recommended that you change the air filter every 6–8 months. However, the time may vary depending on the frequency of use and the air quality in the room. It is important to watch out for the following signs of an expired filter:

- Increased operating noise
- Decreased airflow
- Clogged filter
- Increased presence of odors

NOTE:

- The environment in which the air purifier is being used may also extend or shorten the lifetime of the air filter. Using your air purifier in an environment of relatively high pollution may mean you will need to change the air filter more often.
- If the air pollution in your environment is very high, there is a possibility that the filter may not be completely effective and may need to be replaced before the indicator lights up on the display.
- Remember to reset the air purifier after changing the air filter.

Replacing the Air Filter

1. Turn off and unplug the air purifier, then remove the filter cover. [Figure 4.1]

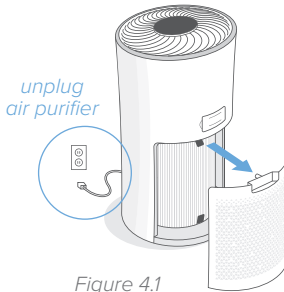


Figure 4.1

2. Remove the old air filter and properly dispose of it. [Figure 4.2]

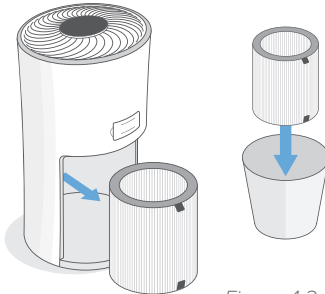


Figure 4.2

3. (Optional) Clean any remaining dust and dirt from inside the housing using a vacuum hose. [Figure 4.3]

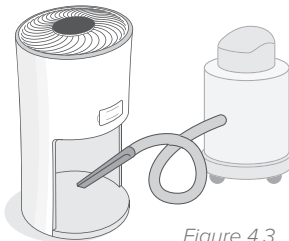


Figure 4.3

4. Unwrap the new air filter and place it into the housing. Make sure the black pull tabs are facing out. [Figure 4.4]

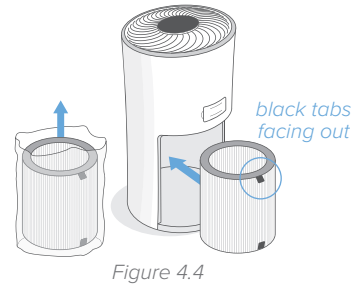


Figure 4.4

5. Replace the back cover onto the housing. [Figure 4.5]

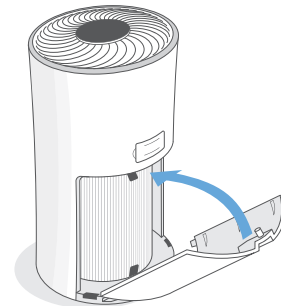


Figure 4.5

6. Plug in and turn on the air purifier. Then press and hold  for 3 seconds (see **Resetting the Air Purifier**, page 11).

NOTE:

- Do not clean the filter with water or other liquid.
- The back cover must be properly secured to the unit in order for it to power on.

Purchasing a New Air Filter

To maintain your health and product performance, please only use **official Levoit replacement filters**. You can purchase new air filters from *Amazon.com* by searching for “**B07DVWWC44**”. You can also scan the QR code below.



If you have any questions, please contact Customer Support (page 14).

Resetting the Air Purifier

It is necessary to reset the air purifier after changing the air filter. There are two scenarios where you must reset the air purifier:

- **Scenario 1:**  lights up red.
 1. Replace the air filter (see **Replacing the Air Filter**, page 10).
 2. Press and hold  for 3 seconds.
 3. The indicator light will turn off. This means that the air purifier has been successfully reset.
- **Scenario 2:** The air filter was changed before  lights up.
 1. Press and hold  for 3 seconds.
 2. The air purifier will chime to indicate that it has been successfully reset.

Cleaning the Dust Sensor

The dust sensor uses an infrared light to detect airborne particles. Accumulated dust, after a prolonged period of use, will affect the sensitivity of the sensor. If this occurs, your air purifier will continue to run on high speed while operating on Auto Mode, and will not adjust itself to a lower speed setting.

1. Turn off and unplug the air purifier.
2. Open the dust sensor cover.
3. Use a cotton swab dipped in clean water to clean the lens.
4. Dry the lens with a clean cotton swab. *[Figure 5.1]*
5. Close the dust sensor cover.

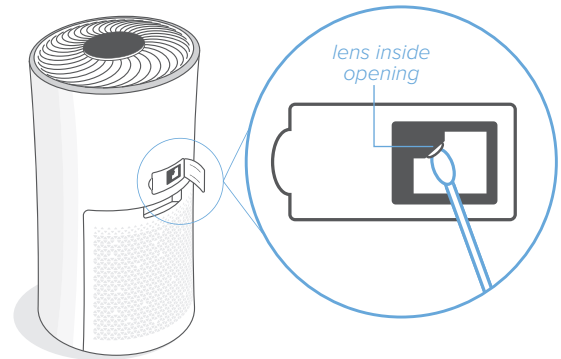



Figure 5.1

TROUBLESHOOTING

Problem	Cause	Solution
Air purifier does not power on.	Unit is not plugged into an electrical outlet.	Connect the plug to a powered electrical outlet.
	Outlet is not working properly.	Try plugging the air purifier into a different outlet.
	Filter cover is not properly placed on the unit.	Properly replace the filter cover (see Getting Started , page 6).
	Power cord is damaged.	Immediately discontinue use and contact Customer Support (page 14).
	Air purifier is defective or malfunctioning.	
Air purifier does not respond to button controls.	Air purifier is not plugged into an outlet.	Connect the plug to a powered electrical outlet.
	Filter cover is not properly placed on the unit.	Properly replace the filter cover (see Getting Started , page 6).
	Air purifier is defective or malfunctioning.	Immediately discontinue use and contact Customer Support (page 14).
After turning on Auto Mode, the air purifier always runs on the highest fan speed.	The air in the surrounding environment is still dirty.	Allow the air purifier to continue running at high speed until the air quality in the room improves.
	There is dust on the lens of the dust sensor.	Clean the dust sensor (see Cleaning the Dust Sensor , page 11).
Air purifier makes an unusual noise while operating.	Air filter needs to be replaced.	Replace the air filter (see Replacing the Air Filter , page 10).
	Filter does not fit properly.	Properly place the filter (see Getting Started and Replacing the Air Filter , pages 6 and 10).
	Foreign object inside the unit.	Immediately discontinue use and contact Customer Support (page 14). DO NOT attempt to open the air purifier.
Significantly reduced airflow.	Filter packaging has not been removed.	Remove the filter from its packaging before use.
	Fan speed is low.	Press  to adjust fan speed.
	Filter needs to be replaced.	Replace the air filter (see Replacing the Air Filter , page 10).
	Not enough clearance on all sides of the purifier.	Ensure there is at least 15 inches (38 cm) of clearance on all sides of the purifier.

Problem	Cause	Solution
Poor air purification quality.	Room is larger than the air purifier's applicable area.	Ensure the room is smaller than 538 ft ² (50 m ²).
	Air intake or outlet is blocked.	Remove objects blocking air intake or outlet.
	Filter is not properly placed inside the housing.	Properly place the filter (see Getting Started and Replacing the Air Filter , pages 6 and 10).
	The air filter is dirty and cannot produce fresh air anymore.	Replace the air filter (see Replacing the Air Filter , page 10).
	Not enough clearance on all sides of the purifier.	Ensure there is at least 15 inches (38 cm) of clearance on all sides of the purifier.
The air purifier is producing an unpleasant odor.	The air filter is dirty and cannot produce fresh air anymore.	Replace the air filter (see Replacing the Air Filter , page 10).
	High humidity levels have caused mildew to grow on the air filters.	Replace the air filter, and move the air purifier to a room where the relative humidity is less than 85% RH.
 is still illuminated after replacing the air filter.	The air purifier has not been reset.	Reset the unit (see Resetting the Air Purifier , page 11).

WARRANTY INFORMATION

Product Name	Tower HEPA Air Purifier
Model Number	LV-H133
Default Warranty Period	1 year
For your own reference, we strongly recommend that you record your order number and date of purchase.	
Date of Purchase	
Order Number	

TERMS & POLICY

Levoit warrants all products to be of the highest quality in material, craftsmanship, and service, effective from the date of purchase to the end of the warranty period.

Levoit will replace any product found to be defective due to manufacturer flaws based on eligibility. Refunds are available within the first 30 days of purchase. Refunds are only available to the original purchaser of the product. This warranty extends only to personal use and does not extend to any product that has been used for commercial, rental, or any other use in which the product is not intended for. There are no warranties other than the warranties expressly set forth with each product.

This warranty is non-transferrable. Levoit is not responsible in any way for any damages, losses, or inconveniences caused by equipment failure by user negligence, abuse, or use noncompliant with the user manual or any additional safety, use, or warnings included in the product packaging and manual.

This warranty does not apply to the following:

- Damage due to abuse, accident, alteration, misuse, tampering, or vandalism.
- Improper or inadequate maintenance.
- Damage in return transit.
- Unsupervised use by children under 18 years of age.

Levoit and its subsidiaries assume no liability for damage caused by the use of the product other than for its intended use or as instructed in the user manual. Some states do not allow this exclusion or limitation of incidental or consequential losses so the foregoing disclaimer may not apply to you. This warranty gives you specific legal rights and you may also have other rights which may vary from state to state.

ALL EXPRESSED AND IMPLIED WARRANTIES, INCLUDING THE WARRANTY OF MERCHANTABILITY, ARE LIMITED TO THE PERIOD OF THE LIMITED WARRANTY.

Additional 1-Year Warranty

You can extend your 1-year warranty by an additional year. Log onto www.levoit.com/warranty and enter your order number (e.g., from Amazon or Houzz) within the first 14 days of your purchase to register your new product for the extended warranty.

If you are unable to provide the order number for your product, please type a short note in the order number field along with the date you received your product.

Defective Products & Returns

Should your product prove defective within the specified warranty period, please contact Customer Support via support@levoit.com with your order number. Once our Customer Support Team has approved your request, please return the unit with a copy of the invoice and your order number.

CUSTOMER SUPPORT

Should you encounter any issues or have any questions regarding your new product, feel free to contact our helpful Customer Support Team. Your satisfaction is our goal!

Customer Support
Arovast Corporation
1202 N. Miller St., Suite A
Anaheim, CA 92806

Support Hours
Monday - Friday:
9:00 am - 5:00 pm PT

Contact Information
Email: support@levoit.com
Toll-Free: (888) 726-8520

** Please have your order invoice and order number ready before contacting Customer Support.*

Connect with us @LevoitLifestyle



levoit

Levoit.com