

Welcome

Thanks for purchasing this **Outdoor Energy Garden Stake Light**. Please read this user manual carefully before use.

Package List

Upon opening the package, please check for the following items:

- * 6 × Outdoor Energy Garden Stake Light
- * 6 × Ground Spikes
- * 6 × Connection Pipes
- * 1 × User Manual

Specifications

- * Material: PC, ABS
- * Light Color: Warm Yellow
- * Outdoor Energy Panel: DC 2V Amorphous Silicon
- * Waterproof Performance: IP45
- * Bead Quantity: 1Pcs LED Bead Per Lamp
- * Battery: 1Pcs 130mAh Included Rechargeable AAA Battery Per Lamp
- * Charging Time: About 6Hours
- * Working Time (Fully Charged): About 10Hours
- * Outdoor Energy Panel Size: 3×3cm/1.18×1.18in

Highlights

- * Outdoor energy panel can effectively absorb sunlight during the day and convert to electricity, illuminate up to 10 hours during night.
- * Sensitive optical sensor helps our lights achieve auto-off during the day and auto-on at the night time.
- * IP45 excellent water resistance and premium ABS material provide extreme long service life.
- * Our upgraded outdoor energy lights are perfect decoration for garden, patio, yard, lawn, pathway, etc..

Friendly Reminder

1. How long the light illuminates depends on your geographical location, weather conditions and seasonal light availability.
2. Choose an outdoor location with full direct sunlight where the outdoor energy panel can receive at least 6 hours of sunlight each day. Shady locations will adversely affect the battery and shorten the working time of the light at night.

Welcome

Thanks for purchasing this **Outdoor Energy Garden Stake Light**. Please read this user manual carefully before use.

Package List

Upon opening the package, please check for the following items:

- * 6 × Outdoor Energy Garden Stake Light
- * 6 × Ground Spikes
- * 6 × Connection Pipes
- * 1 × User Manual

Specifications

- * Material: PC, ABS
- * Light Color: Warm Yellow
- * Outdoor Energy Panel: DC 2V Amorphous Silicon
- * Waterproof Performance: IP45
- * Bead Quantity: 1Pcs LED Bead Per Lamp
- * Battery: 1Pcs 130mAh Included Rechargeable AAA Battery Per Lamp
- * Charging Time: About 6Hours
- * Working Time (Fully Charged): About 10Hours
- * Outdoor Energy Panel Size: 3×3cm/1.18×1.18in

Highlights

- * Outdoor energy panel can effectively absorb sunlight during the day and convert to electricity, illuminate up to 10 hours during night.
- * Sensitive optical sensor helps our lights achieve auto-off during the day and auto-on at the night time.
- * IP45 excellent water resistance and premium ABS material provide extreme long service life.
- * Our upgraded outdoor energy lights are perfect decoration for garden, patio, yard, lawn, pathway, etc..

Friendly Reminder

1. How long the light illuminates depends on your geographical location, weather conditions and seasonal light availability.
2. Choose an outdoor location with full direct sunlight where the outdoor energy panel can receive at least 6 hours of sunlight each day. Shady locations will adversely affect the battery and shorten the working time of the light at night.

3. The selected location should not be near strong lighting sources such as streetlights, which may cause the LED light to turn off automatically as there is a sensor inside to detect brightness and control the light.

Installation



Step 1
Rotate to disassemble the lamp head



Step 2
Take out the PC insulator and turn on the power button



Step 3
Rotate to install the lamp head



Step 4
Connect the connected rod and ground stake



Step 5
Connect the assembled rod to the lamp head



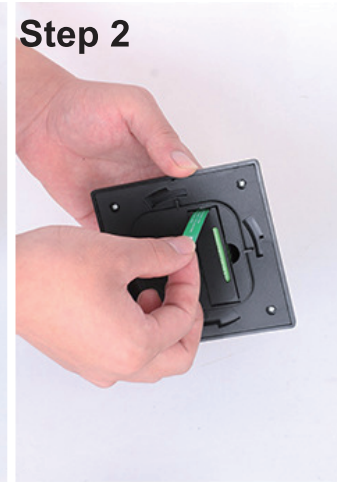
Step 6
Finish

3. The selected location should not be near strong lighting sources such as streetlights, which may cause the LED light to turn off automatically as there is a sensor inside to detect brightness and control the light.

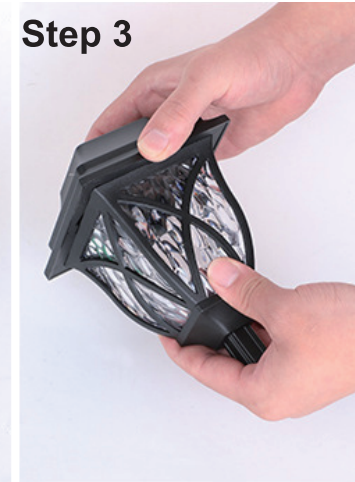
Installation



Step 1
Rotate to disassemble the lamp head



Step 2
Take out the PC insulator and turn on the power button



Step 3
Rotate to install the lamp head



Step 4
Connect the connected rod and ground stake



Step 5
Connect the assembled rod to the lamp head



Step 6
Finish