

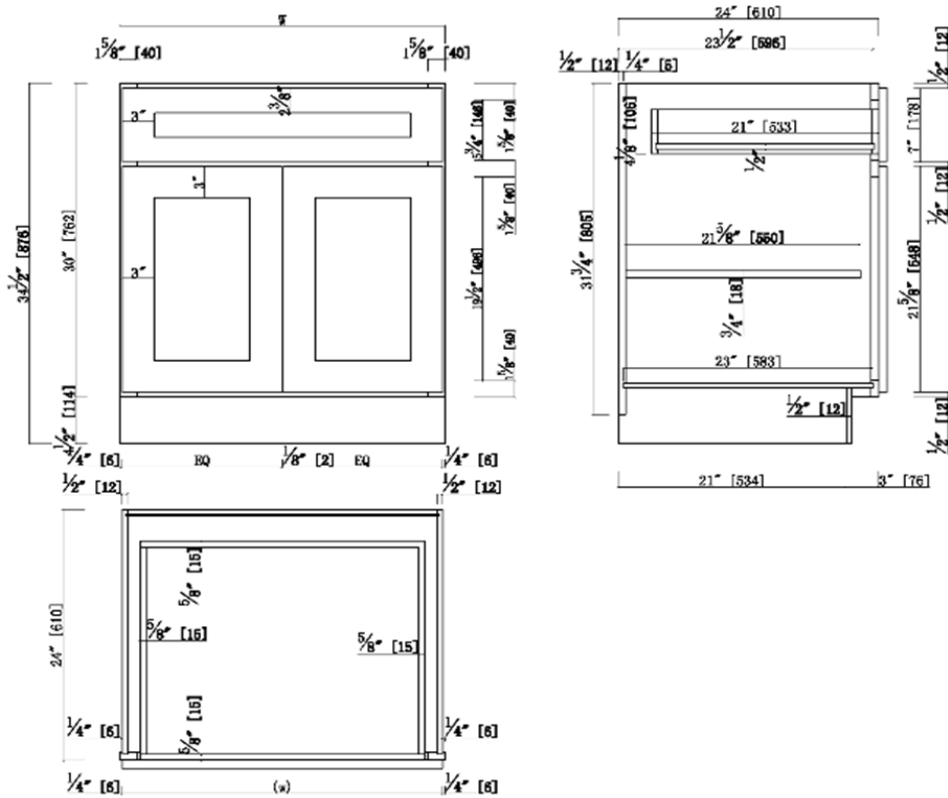
Two Door One Drawer Base Kitchen Cabinet

Specifications

- 3" Wide Shaker Door
- 3/4" Solid maple face frame, Fully overlay with 1/4" reveal
- MDF with wood veneer for door center & drawer center for espresso finish
- 3/4" solid maple door frame & drawer frame for espresso finish
- 3/4" Premium HDF door & drawer front for white finish
- Soft-closing hinge, 6 way adjustable
- Under-mounted epoxy glide, soft-closing glide can be offered for upgrade option.
- 21" Solid Wood Dovetail Drawers
- 1/2" plywood with poplar veneer for side panels, bottom panels
- Metal Clips connectors
- RTA construction
- CARB P2 compliant



Dimensions



Warranty & Compliances

- Warranty: Limited 1 year warranty
- California 93120: Compliant



Finishes/Colors

- | Espresso Finish | White Finish |
|-------------------|-------------------|
| 24" x 24" x 34.5" | 24" x 24" x 34.5" |
| 27" x 24" x 34.5" | 27" x 24" x 34.5" |
| 30" x 24" x 34.5" | 30" x 24" x 34.5" |
| 33" x 24" x 34.5" | 33" x 24" x 34.5" |