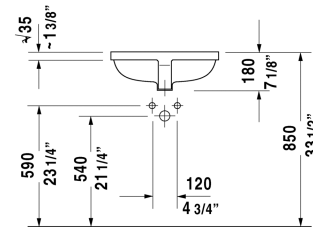
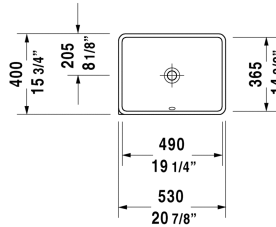


Vanity basin # 0305490000

| < 19 1/4" Inch > |



Vanity basin	Dimension	Weight	Order number
cUPC listed, undermount basin, with overflow, without tap platform, fixings included, 19 1/4" Inch			
<b>Colors</b>			
00 White			
<b>Variant</b>			
☒	19 1/4" x 14 3/8" Inch	16.9 lb	0305490000
Sanitary ceramics with the special WonderGliss surface finish will remain clean and attractive-looking for a long time to come. When ordering WonderGliss please add a "1" as eleventh digit to the model number.			
Push-open waste	2" Inch	0.8 lb	005052
Fixing for stone countertops, (with the exception of # 046651)		0.4 lb	005028

All drawings contain the necessary measurements which are subject to standard tolerances. They are stated in inch & mm and are non-binding. Exact measurements, in particular for customized installation scenarios, can only be taken from the finished ceramic piece.