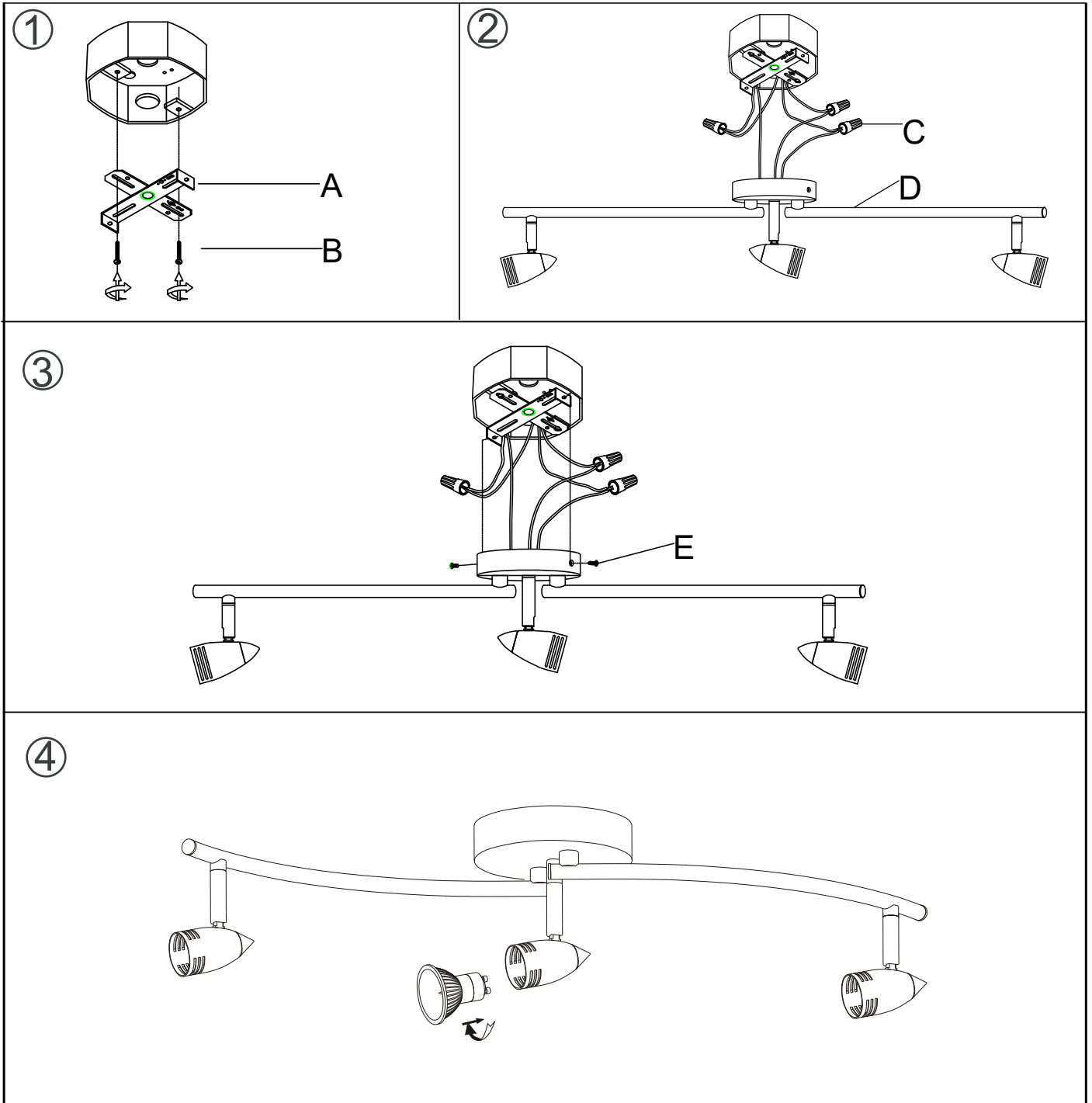


17808-004 Assembly Instruction



1. Carefully remove all parts from the box and remove all plastic covering.
2. Turn OFF power to the junction box , where the vanity will be installed.
3. Connect the live wire (black wire) to the live junction box wire with a plastic wire connector(C) and wrap the connection with electrical tape. Connect the neutral wire (white wire) to the neutral junction box wire with a plastic wire connector(C). Then wrap the connection with electrical tape.
4. Attach the ground wire (not labeled) from the fixture to the ground junction box wire in the outlet box, or wrap the ground wire around the ground screw.
5. Secure the crossbar (A) to the junction box using the mounting screws (B) and tighten.
6. Attach the canopy onto the crossbar (A), lining up two mounting plate hole, screw them with two screws (E).
7. Install bulb(not included)