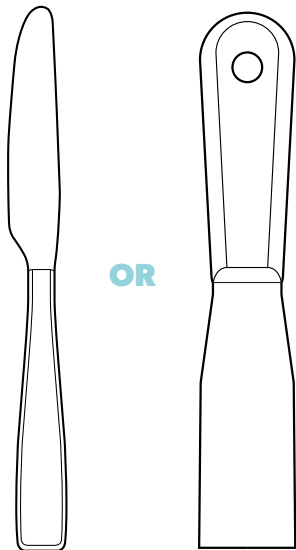
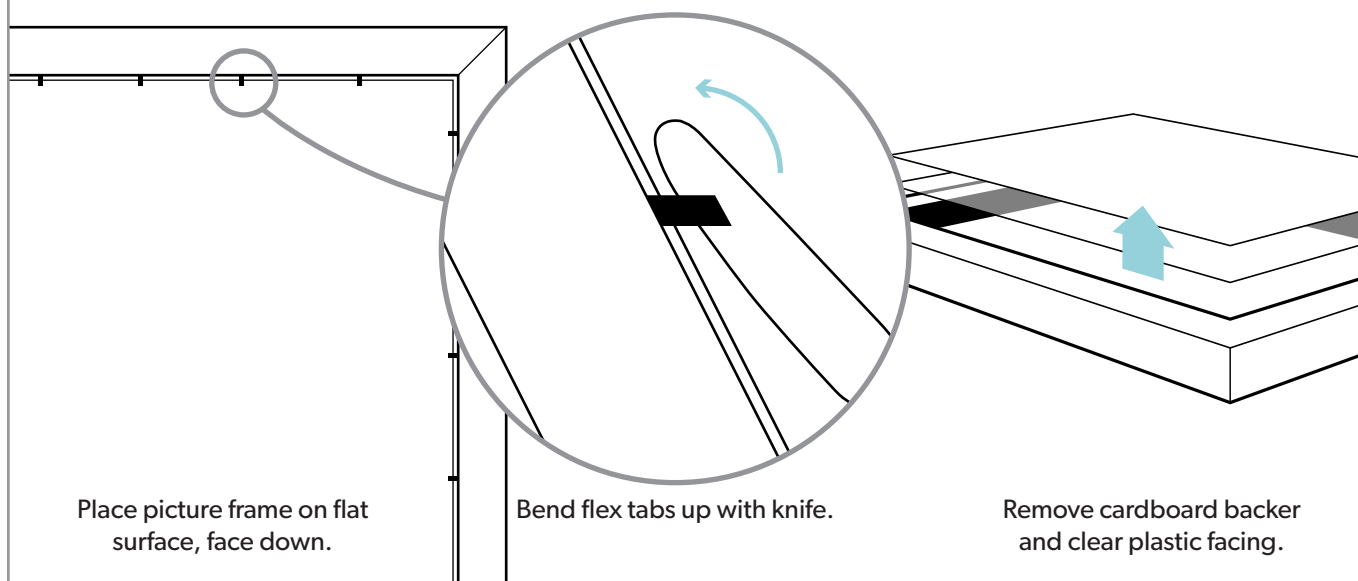


TOOLS NEEDED



OR

1: DIS-ASSEMBLE FRAME

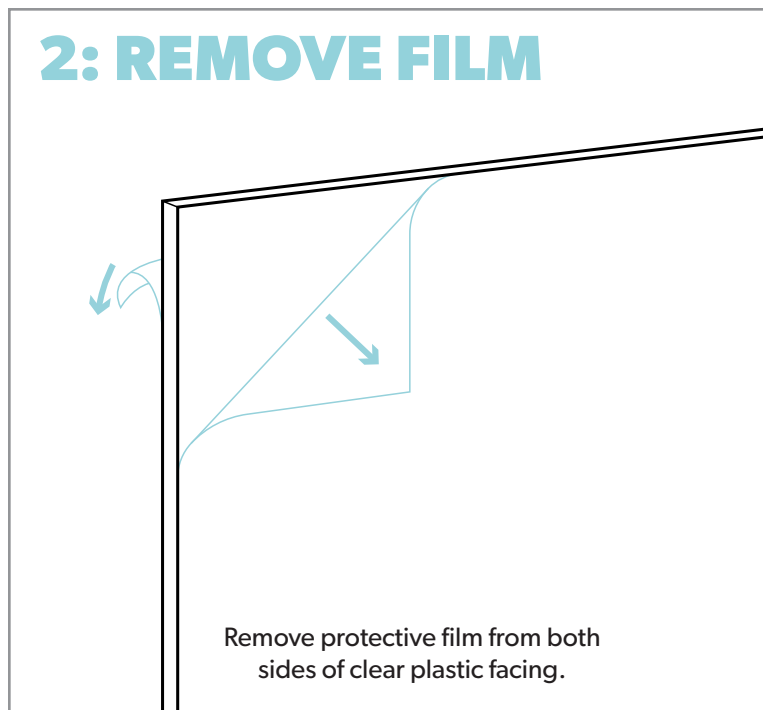


Place picture frame on flat surface, face down.

Bend flex tabs up with knife.

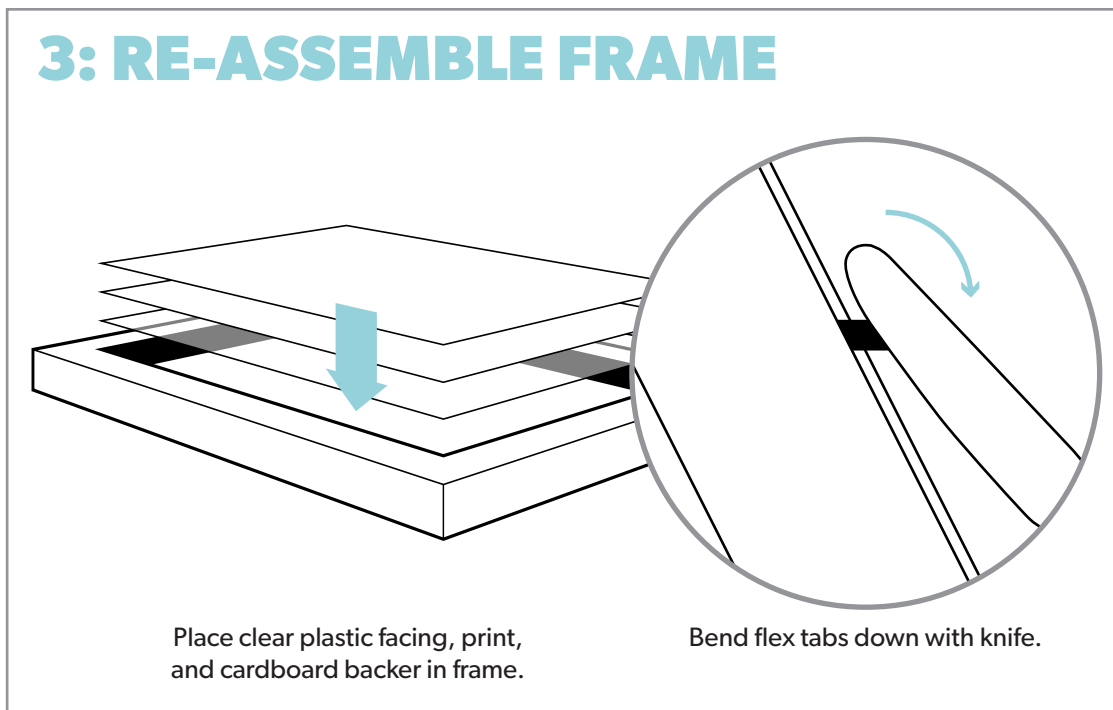
Remove cardboard backer and clear plastic facing.

2: REMOVE FILM



Remove protective film from both sides of clear plastic facing.

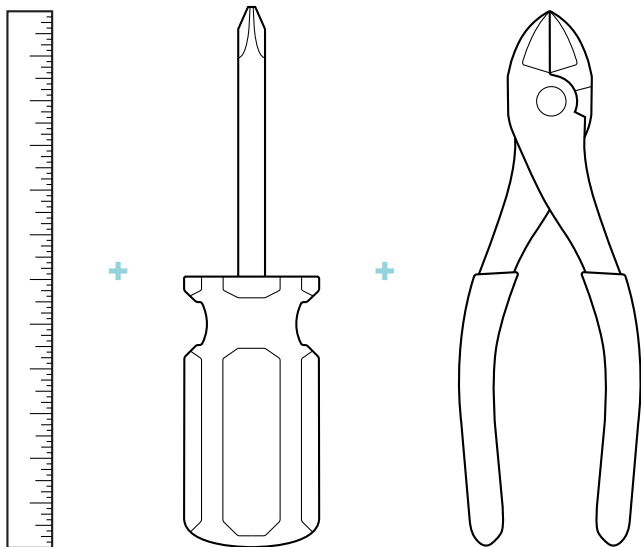
3: RE-ASSEMBLE FRAME



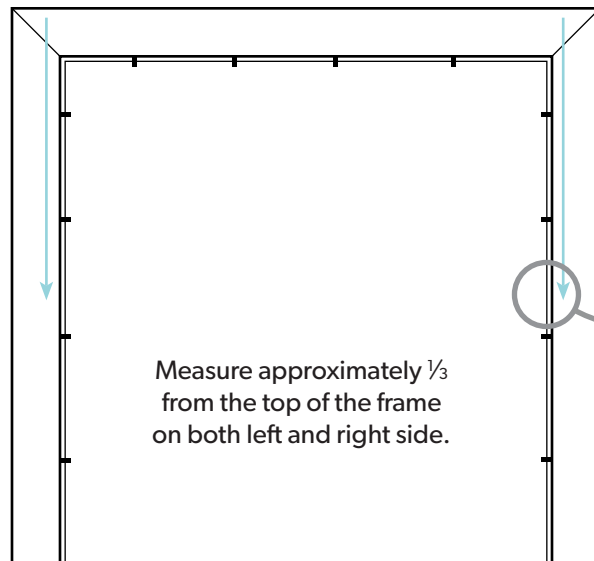
Place clear plastic facing, print, and cardboard backer in frame.

Bend flex tabs down with knife.

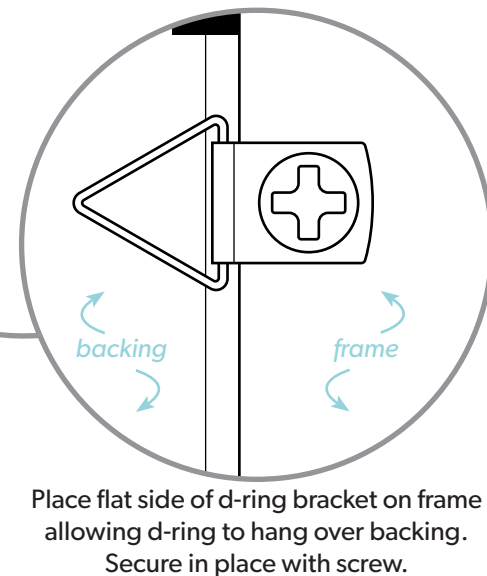
TOOLS NEEDED



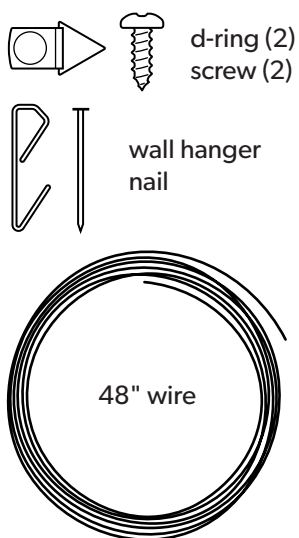
1: MEASURE



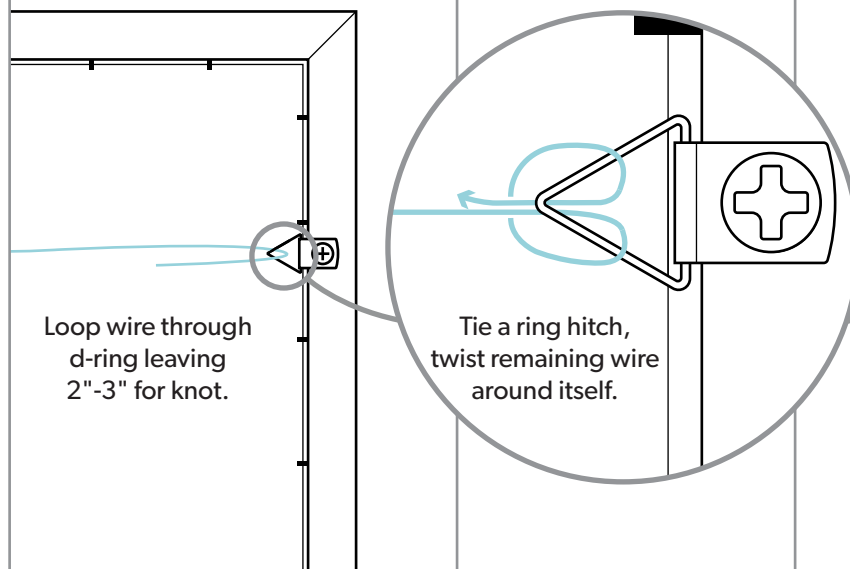
2: INSTALL D-RINGS



INCLUDED



3: TIE WIRE



4: STRETCH + TIE WIRE

