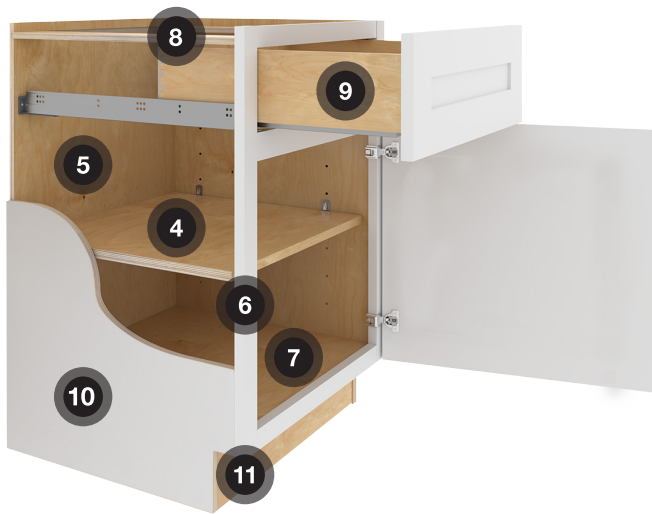


STANDARD CABINET CONSTRUCTION

CABINET CONSTRUCTION



1. **CEILING PANEL** ½" thick CARB2 compliant plywood. Both sides are captured by the cabinet end panels
2. **INTERIOR FINISH** Natural birch finish that provides a durable, wipe clean surface.
3. **SOFT CLOSE DOORS** Fully concealed soft-close 6-way adjustable hinges that open 110°.
4. **ADJUSTABLE SHELVES** ¾" thick CARB2 compliant plywood with a natural birch finish and matching edge banding. Shelves are full-depth and have a 15 lb. per sq. ft. weight capacity rating.
5. **BACK PANEL** ½" thick CARB2 compliant plywood with a natural birch finished interior and raw exterior. The "clipped" back panel on corner cabinets is ¼" thick CARB2 compliant plywood.
6. **FACE FRAMES** 1½" wide x ¾" thick solid hardwood and pocket screwed.
7. **FLOOR PANEL** ½" thick CARB2 compliant plywood. Both sides are captured by the cabinet end panels.
8. **"I-BEAM" BRACES** ½" thick CARB2 compliant plywood. These full-depth braces provide stability and support for countertop attachment.
9. **SOFT CLOSE DRAWERS** Drawer box is 5/8" thick with dovetail carpentry joints
10. **END PANELS** ½" thick CARB2 compliant plywood finished to match the cabinet face frame.
11. **INTEGRAL TOE KICK** ½" thick CARB2 compliant plywood unfinished integral toe kick provides solid backing for (MTK8) Matching Toe Kick installation



ALL CABINET SIDES are manufactured from ½" thick CARB2 compliant plywood and are finished to match the cabinet face frame.