

Crystal Bathroom Vanity Lights

Product specification

PLEASE READ THE INSTRUCTION CAREFULLY.FOLLOW ALL STEPS AND PAY ATTENTION TO THE WARNINGS

WARNING

- Turn the electricity off at the main circuit breaker panel before installation. Thoroughly wash hands after finishing.
- Remove the fixture and the mounting package from the box and make sure that no parts are missing by referencing the illustrations on the installation instructions.
- All electrical connections must be following local and National ElectricalCode (N.E.C.) standards. If you are unfamiliar with proper electrical wiring connections, please ask for help from a qualified electrician.

CAUTION

The glass shade is fragile, please take care of your hands when handling glass components or lamps.

PART LIST AND ASSEMBLY ILLUSTRATION

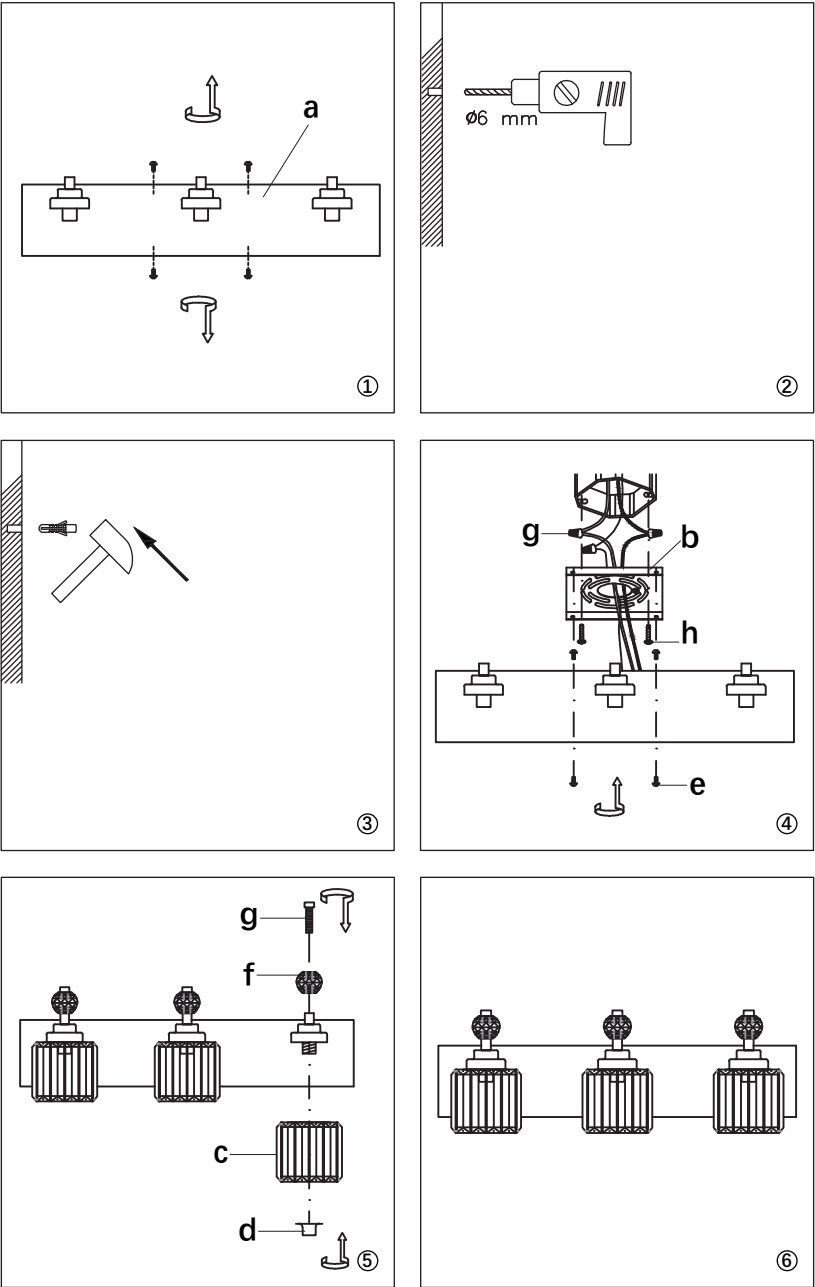
Note: Some parts may be pre-installed or pre-assembled

NO	a	b	c	d	e
COMPONENTI					
QUANTITY	1	1	3	3	4

NO	f	g	h	i	j	k
COMPONENTI						
QUANTITY	3	3	2	3	2	2

INSTALLATION STEPS

Please strictly follow the steps in this manual for installation, otherwise there is a risk of damage to the product.



STEP 1
Please make sure that the power is off again. Fix the MOUNTING BRACKET to the wall! Pay attention to the installation position to ensure that the light fixture can be fixed at the ideal angle later.

STEP 2
Make wire connection with WIRE NUTS. Screws fixed mounting bracket and fixture back plate.

STEP 3
Attach the CRYSTAL SHADES(c) onto FIXTURE using SOCKET RINGS(d). Install the bulbs (Not included)

STEP 4
Turn on the light. It is in perfect view!