

User Manual



Electric Fireplace

This product is only suitable for well insulated spaces or occasional use

Please Retain For Future Reference



Caution

- ◆ Please read all instructions carefully before using this product.
- ◆ Make sure that the voltage rating label on the type plate corresponds to your main voltage. If not see your retailer and do not connect the appliance.
- ◆ Never use the appliance unsupervised when in use.
- ◆ If you have to leave even for a short moment please stop the appliance.
- ◆ Keep out of reach of children and do not allow them to operate this appliance
- ◆ Only use the appliance for domestic purposes and in the way indicated in these instructions.
- ◆ From time to time check the cord for damages. Never use the appliance if the cord or any part of the appliance shows any signs of damage.
- ◆ If the supply cord is damaged, it must be replaced by the manufacturer, its service agent or similarly qualified persons in order to avoid a hazard.
- ◆ Make sure the connection cord does not touch any hot surfaces.



- ◆ **WARNING:** In order to avoid overheating, do not cover the heater.
- ◆ Keep the appliance at least 15cm (6inches) from walls and any other thing, to permit a good air circulation.
- ◆ Do not use the appliance outdoors
- ◆ Do not use if you have wet hands.
- ◆ Never use the appliance on or near hot surfaces.
- ◆ Never move the appliance by pulling the cord.
- ◆ Before cleaning the appliance, make sure it is unplugged from the power and that it is completely cooled.
- ◆ Do not clean the appliance with abrasive chemicals.
- ◆ Never use accessories that are not recommended or supplied by the manufacturer. It could cause danger to the user or damage to the appliance
- ◆ Never route the mains cable beneath carpet.
- ◆ Never use the heater to dry clothes or any other similar items.
- ◆ The heater must not be located immediately below a socket outlet.
- ◆ This heater must not be used with an extension lead.
- ◆ Do not use this heater with a programmer, timer or any other device that switches the heater on automatically, since a fire risk exists if the heater is covered or positioned incorrectly.
- ◆ Do not use this heater in the immediate surroundings of a bath, a shower or a swimming pool.
- ◆ **CAUTION:** In order to avoid a hazard due to inadvertent resetting of the thermal cutout, this appliance must not be supplied through an external switching device, such as a timer, or connected to a circuit that is regularly switched on and off by the utility.
- ◆ This appliance can be used by children aged from 8 years and above and persons with reduced physical, sensory or mental capabilities or lack of experience and knowledge if they have been given supervision or instruction concerning use of the appliance in a safe way and understand the hazards involved. Children shall not play with the appliance. Cleaning and user maintenance shall not be made by children without supervision.

- ◆ Children of less than 3 years should be kept away unless continuously supervised.
- ◆ Children aged from 3 years and less than 8 years shall only switch on/off the appliance provided that it has been placed or installed in its intended normal operating position and they have been given supervision or instruction concerning use of the appliance in a safe way and understand the hazards involved. Children aged from 3 years and less than 8 years shall not plug in, regulate and clean the appliance or perform user maintenance.
- ◆ **CAUTION** — Some parts of this product can become very hot and cause burns. Particular attention has to be given where children and vulnerable people are present.
- ◆ Regarding the instructions for replacing bulb, thanks to refer to the below paragraph of the manual.

Operating Instructions

Never cover the heater or obstruct the opening at the base of the heater, this could cause overheating and consequent risk of fire.

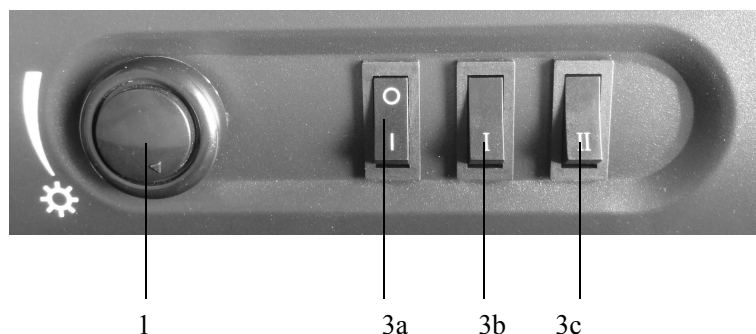
Never move the heater when it is operating, this could cause the bulb breakdown. Please turn the heater off if you want to move it.

When you turn the heater on for the first time you may notice a slight odor, this is harmless and will stop after a short amount of time.

Heater Control Panel

Insert Plug Into Socket

The following switches are located under the controls cover at the front of the heater.



- Switch (3a) Switchs ON/OFF electricity supply to the heater and flame effect

Note: This switch must be in the ON position for heating operation.

- Switch (3b) Switchs ON/OFF 900W heat output

- Switch (3c) Switchs ON/OFF 1800W output with switch 3b

Note: The flame effect can be operated with or without heat.

- Rotate thermostat control (1) clockwise or anti-clockwise to achieve desired room temperature.

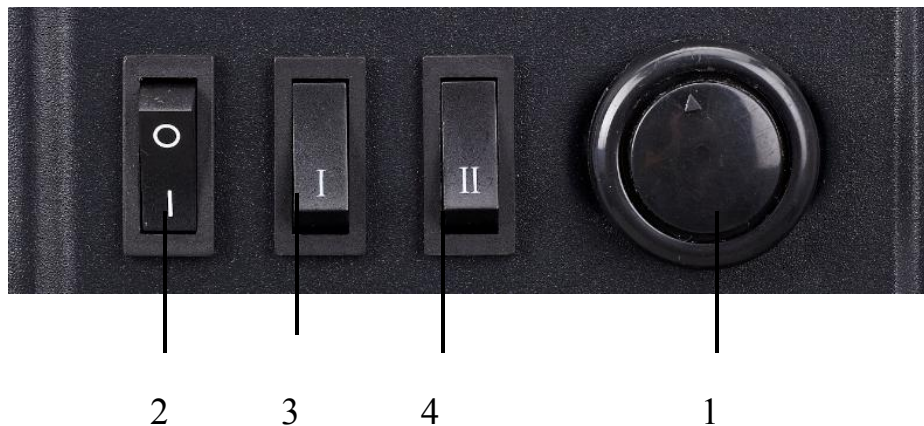
The control switch is located on the front of the heater as below.



- The control switch at the OFF position when first operation.
- Rotate control switch clockwise through the three settings.
- Switch on electricity supply to the heater and flame effect at ON position.
- Switch on low heat setting at 900W position.
- Switch on high heat setting at 1800W position.
- Rotate control switch anticlockwise to switch off the settings accordingly.
- This heater has a adjustable thermostat to set desired room temperature. Rotate clockwise or anti-clockwise to achieve desired room temperature setting.

Note: The thermostat is located on the back of the heater.

The following switches are located at back of of the heater.



Insert plug into mains socket

Select the desired functions:

- Switch 2 (O/I) Switches on/off electricity supply to the heater and flame effect
- **Note:** This switch must be in the ON (I) position for heater to operate with or without heat
- Switch 3 (I) Switches on/off 1000W heat output
- Switch 4 (II) Switches on/off 2000W heat output with switch 3.
- **Note:** The flame effect can be operated with or without heat.

Rotate thermostat knob (1) clockwise or anti-clockwise to increase or decrease desired room temperature setting.

Safety Cut-Off

This appliance is fitted with a safety cut-off which will operate if the heater overheats (e.g. Due to blocked air vents). For safety reasons, the heater will NOT automatically reset.

To reset the appliance, disconnect the appliance from the mains supply for at least 15 minutes. Reconnect the supply to the mains and switch on the appliance.

Maintenance

Before cleaning or maintenance operation, switch off and unplug the appliance. Ensure it is perfectly cooled.

To remove the dust, wipe the appliance with a cloth

Never use abrasives or detergents

Bulb Replacement

This product does not use a standard bulb for its flame effect. The appliance uses an electronically controlled LED system to create the effect, therefore no parts need to be replaced. There are no user-serviceable parts on this appliance. Under no circumstances should the appliance be serviced by anyone other than a qualified electrician.

Troubleshooting

Symptom	Solution
No operation/ no fan.	Check if put the electric plug into the socket. Check for safety cut-off operation.
No fire effect light.	Check the LED system by qualified electrician

Disposal

At the end of the product's serviceable life it should be disposed of thoughtfully and safely in accordance with local authority regulations. The plug should be removed from the power supply cord and the power cord cut from the heater

Technical Specification

Supply: 220-240V~ 50Hz

Rated power: 1800W

Lighting: LED bulbs (no replaceable parts)

Supply: 220-240V~ 50Hz

Rated power: 2000W

Lighting: LED bulbs (no replaceable parts)



Meaning of crossed –out wheeled dustbin:

Do not dispose of electrical appliances as unsorted municipal waste, use separate collection facilities.

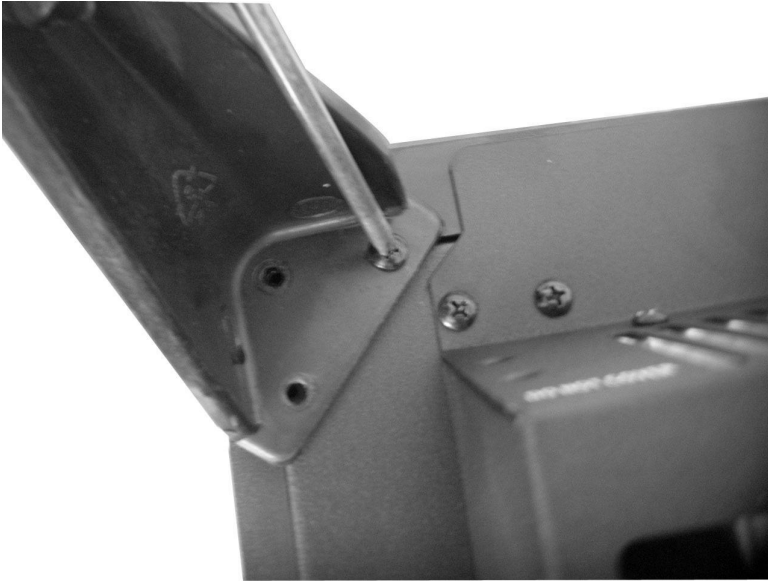
Contact you local government for information regarding the collection systems available.

If electrical appliances are disposed of in landfills or dumps, hazardous substances can leak into the groundwater and get into the food chain, damaging your health and well-being.

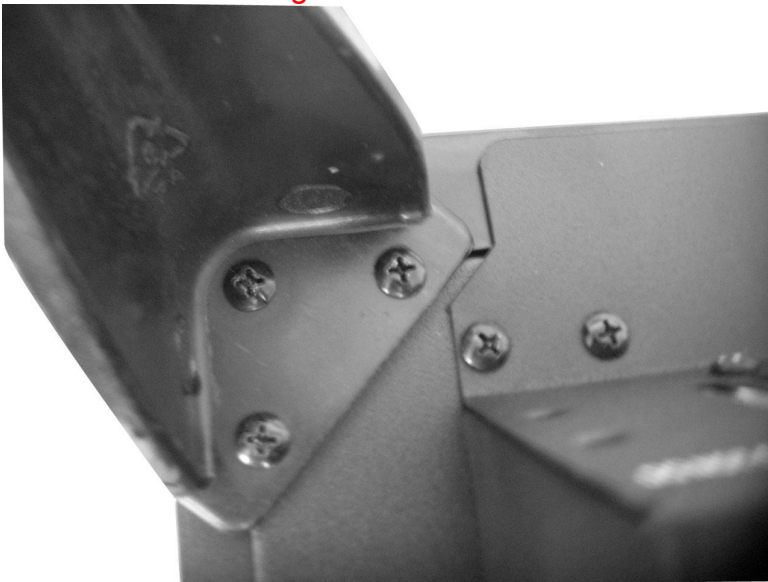
Fitting the feet

Product is supplied with the feet removed in order to prevent damage during transportation. To fitting the feet, please follow these instruction.

1. Remove leg from the bag, and locate and line up holes in the leg, with holes in the underside of the stove body. Repeat the above for the other three legs.



2. With use of a screwdriver, secure leg with the three screws provided (The screw is with the manual) . Repeat the above for the other three legs.



3. This is how the leg looks when attached correctly.



4. This is how the stove will look when all four legs are in place.

Information requirements for electric local space heaters

Item	Symbol	Value	Unit	Item	Unit
Heat output				Type of heat input, for electric storage local space heaters only (select one)	
Nominal heat output	P_{nom}	1.8	KW	manual heat charge control, with integrated thermostat	Not applicable
Minimum heat output (indicative)	P_{min}	0.9	KW	manual heat charge control with room and/or outdoor temperature feedback	Not applicable
Maximum continuous heat output	$P_{max,c}$	1.8	KW	electronic heat charge control with room and/or outdoor temperature feedback	Not applicable
Auxiliary electricity consumption				fan assisted heat output	Not applicable
At nominal heat output	e_{max}	0	KW	Type of heat output/room temperature control (select one)	
At minimum heat output	e_{min}	0	KW	single stage heat output and no room temperature control	[no]
In standby mode	e_{sb}	0	KW	Two or more manual stages, no room temperature control	[no]

	with mechanic thermostat room temperature control	[yes]
	with electronic room temperature control	[no]
	electronic room temperature control plus day timer	[no]
	electronic room temperature control plus week timer	[no]
	Other control options (multiple selections possible)	
	room temperature control, with presence detection	[no]
	room temperature control, with open window detection	[no]
	with distance control option	[no]
	with adaptive start control	[no]
	with working time limitation	[no]
	with black bulb sensor	[no]

Item	Symbol	Value	Unit	Item	Unit
Heat output				Type of heat input, for electric storage local space heaters only (select one)	
Nominal heat output	P_{nom}	2.0	KW	manual heat charge control, with integrated thermostat	Not applicable
Minimum heat output (indicative)	P_{min}	1.0	KW	manual heat charge control with room and/or outdoor temperature feedback	Not applicable
Maximum continuous heat output	$P_{max,c}$	2.0	KW	electronic heat charge control with room and/or outdoor temperature feedback	Not applicable

Auxiliary electricity consumption				fan assisted heat output	Not applicable
At nominal heat output	$e_{l_{max}}$	0.013 (fan motor)	KW	Type of heat output/room temperature control (select one)	
At minimum heat output	$e_{l_{min}}$	0.013 (fan motor)	KW	single stage heat output and no room temperature control	[no]
In standby mode	$e_{l_{sb}}$	0	KW	Two or more manual stages, no room temperature control	[no]
				with mechanic thermostat room temperature control	[yes]
				with electronic room temperature control	[no]
				electronic room temperature control plus day timer	[no]
				electronic room temperature control plus week timer	[no]
				Other control options (multiple selections possible)	
				room temperature control, with presence detection	[no]
				room temperature control, with open window detection	[no]
				with distance control option	[no]
				with adaptive start control	[no]
				with working time limitation	[no]
				with black bulb sensor	[no]