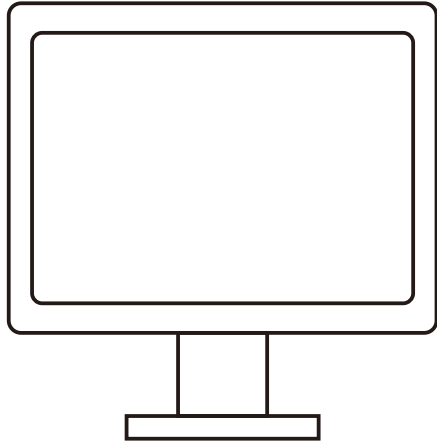


TOUCH SCREEN MONITOR MANUAL



TEAURES

- Screens serve as POS,PC Monitor,Portable TV for replayVideoinRV,Car,Boat,etc.
- Perfect for use in retail,point-of-sale(POS),VOD system, Juke Box and many other hospitality applications.
- Sensitive touch screens recognize touch input from stylus,finger,glovedhand,penortool.
- Exceptional and durable touch screen monitor at an excellentvalue.

TOUVH SCREEN PRODUCTS



APPLICATIONS

General Productivity

Outlook/Mail,Calendar or Address Book applications up all the time.
View Widgets for To-do's, Weather,Stock Tickers,Dictionary, Thesaurus,ets.
Track System Performance, Monitor Network Traffic,CPU cycles.

Entertainment

Have you media player up to control entertainment.
Quick access to important toolboxes for online gaming.
Use it as a secondary display for computers hooked up to Tvs.
Run a 2nd display without the need for a new graphics card.

Social

AIM/Google/MSN Chat while using other full screen applications.
Watch for Friends on Facebook and MySpace.
Keep your Twitter Client up all the time but your main work screen, get tweets 24/7.

Creative

Park your Adobe Creative Suite application toolbars or controls.
Powerpoint:keep your formatting palettes,colors, etc, on a separate screen.

Creative

Integrate into point-of-purchase or point-of-registration process.
Cost-effective method to have multiple consumers/customers register,enter information,and authenticate.Use one computer for multiple users(with virtualization software not included).

	10/12 Inch Pos Touch Screen Monitor	15 Inch Pos Touch Screen Monitor	17 Inch Pos Touch Screen Monitor	19 Inch Pos Touch Screen Monitor
Screen size	10" /12"	15"	17"	19"
Display Type	Touch Screen	Touch Screen	Touch Screen	Touch Screen
Display Format	4:3 Standard LCD	4:3 Standard LCD	4:3 Standard LCD	4:3 Standard LCD
Maximum Resolution	800X600/1024X768	1024X768	1280X1024	1280X1024
Contrast Ratio	320:1	350:1	350:1	350:1
Brightness	350cd/m ²	300cd/m ²	300cd/m ²	300cd/m ²
Response Time(typical)	5ms	5ms	5ms	5ms
Horizontal Viewing Angle	170 degrees	170 degrees	170 degrees	170 degrees
Vertical Viewing Angle	170 degrees	170 degrees	170 degrees	170 degrees
Power Consumption	<30W	<30W	<30W	<30W
Power Supply	100-240 VAC/50-60Hz	85-265 VAC/50-60Hz	85-265 VAC/50-60Hz	85-265 VAC/50-60Hz
Stand	Plastic	Metal with plastic cover	Metal with plastic cover	Metal with plastic cover
Touch Screen Type	4-Wire	4-Wire(optional 5-wire)	4-Wire(optional 5-wire)	4-Wire(optional 5-wire)

Remark:manual is suitable use for other sizes.

Trouble shooting

Problem:Screen has no picture

If LED indicator is off:Check whether the cable is connected firmly.
 If LED indicator is in red:Check whether the connection of the video cable is firm at the same time and check whether the computer is turned on.

If LED indicator shows green is in green:Check whether horizontal synchronization exceeds the range.

Problem:Picture unstable(miscellaneous wave,shake etc.)

Check whether updated video of computer matches with this machined.

Important notice

Cleaning important notice

- 1.Please use the soft cloth with hair to clean LCD Screen,in order to remove dust and stolen goods on screen.
- 2.Should not exert pressure to offer while polishing the screen surface of LCD.
- 3.Please don't use water and other chemical cleance to polish the screen surface of LCD,chemical drug may damage the screen surface of LCD.

Cleaning Important Notice

BEFORE USE THE PRODUCT, PLEASE READ THE FOLLOWING PRECAUTIONS IN DETAILS, AND KEEP IN IT ORDER TO INQUIRE ABOUT IN THE FUTURE PROPERLY.

- 1.Do not connect or block heat dissipation hole under machine, so as not to hinder the collective dispelling heat.
- 2.Do not use the sharp things, metal or liquid to stretch into or touch the signal terminal or in the heat dissipation hole, to avoid a short circuit and product damaged.
- 3.Have if you not use the product for a very long time, shall Pull out power cable from plug.
- 4.Do not try to resolve it by yourself or dismantle any parts of this product, may lead to damage product and injury to human body, and make the products guarantee that you should enjoy lose efficiency.
- 5.Do not touch screen surface with sharp objects, they may damage the screen surface in this way, and very difficult to drive out if oil of skin stay at screen.
- 6.Do not exert pressure to LD screen, because LCD screen is very exquisite and fragile.
- 7.Please pul out Power Supply Cable of this product in the following situations:
 A:Have if you not use the product for some time.
 B:If the cable or outlet/plug is damaged.

19 inch Product Specification

LCD panel type	19 TFT liquid crystal display
Max resolution	1280(Horizanal)x1024(Vertical)xRGB
HXWXD	425(Height)x355(Height)x50(Depth)mm
Contrast	350:1
Brightness	300cd/m ²
Response time	5ms
Viewing angle left/right	+80° ~ -80°or +60° ~ -60°
Up/Down	+80° ~ -80°or +55° ~ -55°
Input signal video signal	RGB analogy 0.7Vp-p
Display mode	VGA,SVGA,XGA
Signal connecting cable	15 hole mini model D type
Front panel control button	Power control switch, LED indicator lamp,OSD Option,+/Adjustment
	button, screen automatic setting, OSD Selecting
OSD adjusting project	Contrast, Brightness, automatic adjusting, picture location, Phase, horizontal position, vertical position, input signal,Computer
	VGA.
Power supply transformer	Alternating current input:100-240V/1.8A 50-60HZ
	Direct current:12V/4A
Operating environment	Temperature 0 ~ 50 Humidity 20% ~ 80%
Store environment	Temperature-20 ~ 60 Humidity 20% ~ 80%
Security authentication	FCC,CE,ROHS

17 inch Product Specification

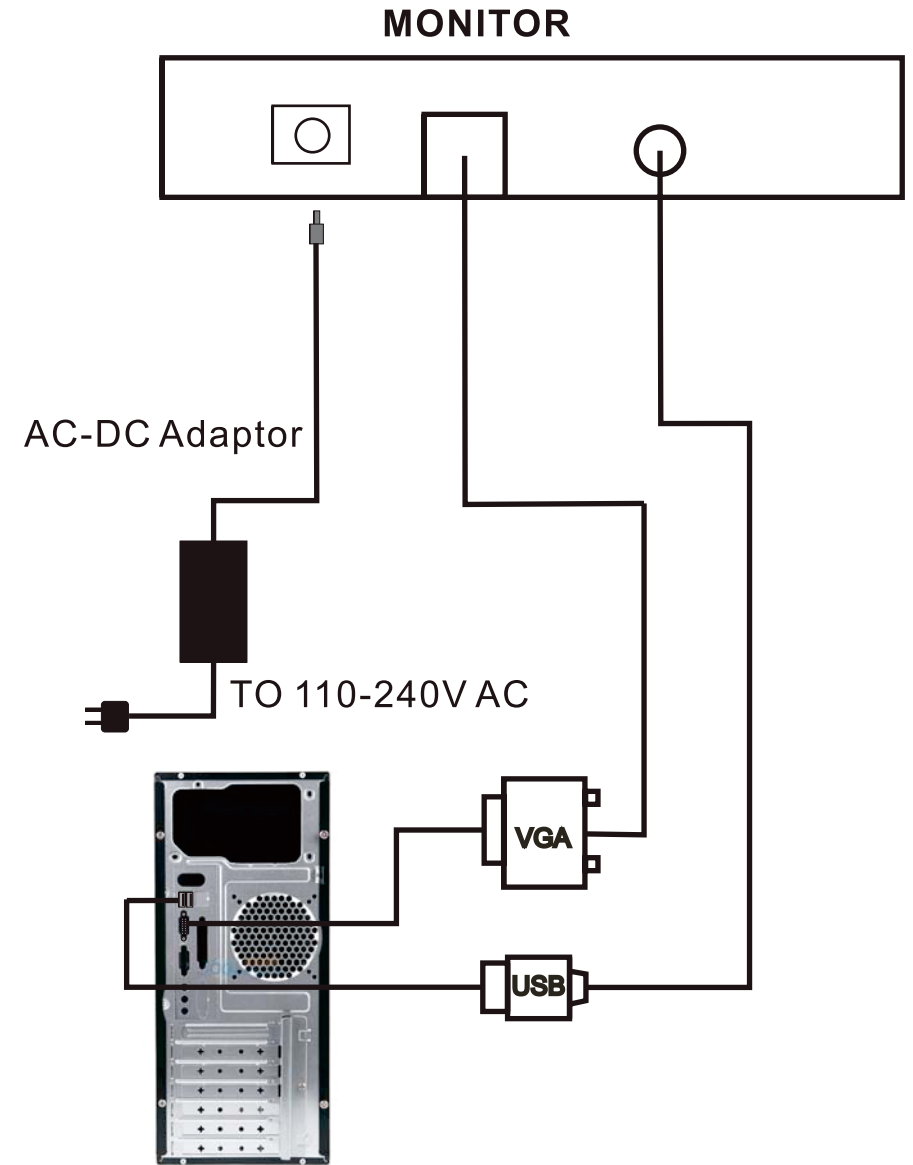
LCD panel type	17 TFT liquid crystal display
Max resolution	1280(Horizanal)x1024(Vertical)xRGB
HXWXD	380(Height)x308(Height)x55(Depth)mm
Contrast	350:1
Brightness	300cd/m ²
Response time	5ms
Viewing angle left/right	+80° - -80°or +60° - -60°
Up/Down	+80° - -80°or +55° - -55°
Input signal video signal	RGB analogy 0.7Vp-p
Display mode	VGA,SVGA,XGA
Signal connecting cable	15 hole mini model D type
Front panel control button	Power control switch, LED indicator lamp,OSD Option,+/Adjustment
	button, screen automatic setting, OSD Selecting
OSD adjusting project	Contrast, Brightness, automatic adjusting, picture location, Phase,
	horizontal position, vertical position, input signal,Computer
	VGA.
Power supply transformer	Alternating current input:100-240V/1.8A 50-60HZ
	Direct current:12V/4A
Operating environment	Temperature 0 - 50 Humidity 20% - 80%
Store environment	Temperature-20 - 60 Humidity 20% - 80%
Security authentication	FCC(DOC),CE,VCC-1,TUV/GS,ROHS

15 inch Product Specification

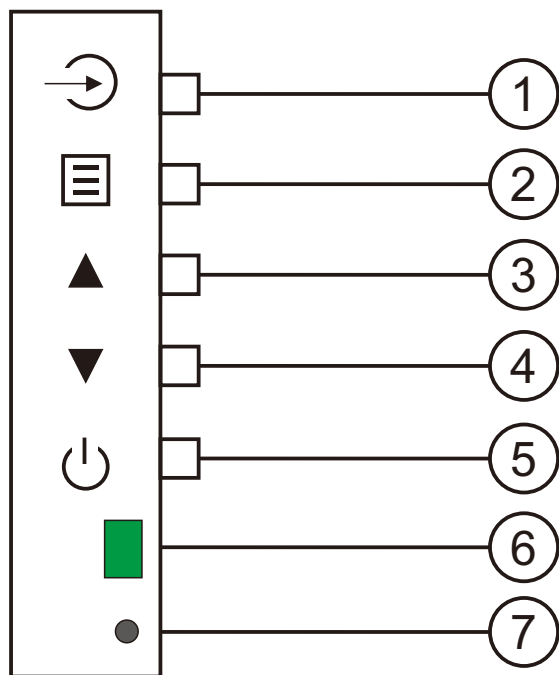
LCD panel type	15.1 TFT liquid crystal display
Max resolution	1024(Horizanal)x768(Vertical)xRGB
HXWXD	375(Height)x290(Height)x55(Depth)mm
Contrast	350:1
Brightness	300cd/m ²
Response time	5ms
Viewing angle left/right	+80° - -80°or +60° - -60°
Up/Down	+80° - -80°or +55° - -55°
Input signal video signal	RGB analogy 0.7Vp-p
Display mode	VGA,SVGA,XGA
Signal connecting cable	15 hole mini model D type
Front panel control button	Power control switch, LED indicator lamp,OSD Option,+/Adjustment
	button, screen automatic setting, OSD Selecting
OSD adjusting project	Contrast, Brightness, automatic adjusting, picture location, Phase,
	horizontal position, vertical position, input signal,Computer
	VGA.
Power supply transformer	Alternating current input:100-240V/1.8A 50-60HZ
	Direct current:12V/3.3A
Operating environment	Temperature 0 - 50 Humidity 20% - 80%
Store environment	Temperature-20 - 60 Humidity 20% - 80%
Security authentication	CE, ROHS, FCC

10/12 inch Product Specification

LCD panel type	10/12 TFT liquid crystal display
Max resolution	800(Horizanal)x600(Vertical)xRGB/1024(Horizanal)x768(Vertical)xRGB
HXWXD	265(Height)x215(Height)x50(Depth)mm 300(Height)x245(Height)x45(Depth)mm
Contrast	350:1
Brightness	300cd/m ²
Response time	5ms
Viewing angle left/right	+80° - -80°or +60° - -60°
Up/Down	+80° - -80°or +55° - -55°
Input signal video signal	RGB analogy 0.7Vp-p
Display mode	VGA,SVGA,XGA
Signal connecting cable	15 hole mini model D type
Front panel control button	Power control switch, LED indicator lamp,OSD Option,+/Adjustment button, screen automatic setting, OSD Selecting
OSD adjusting project	Contrast, Brightness, automatic adjusting, picture location, Phase, horizontal position, vertical position, input signal,Computer VGA.
Power supply transformer	Alternating current input:100-240V/1.8A 50-60HZ Direct current:12V/3.3A
Operating environment	Temperature 0 - 50 Humidity 20% - 80%
Store environment	Temperature-20 - 60 Humidity 20% - 80%
Security authentication	FCC,CE,ROHS



Front Panel of the Device

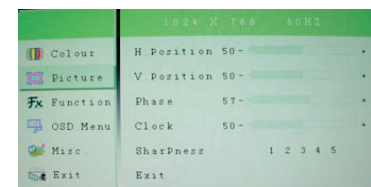


1. Automatic setting display parameter
2. OSD menu, exit the present menu if neter again
3. Icon right
Project down
Increase choosing adjustment parameter of OSD
4. Icon left
Project up
Reduce choosing adjustment parameter of OSD
5. Power ON/OFF Turn on or off unit
6. power supply LED indictor: green light repressents work, red light repressents wait condition
7. Remote control window

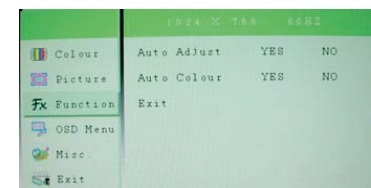
Basic operation



Press MENU button to show the follow menu. Press MENU button again to enter into COLOUR mode, press UP/DOWN button to choose the item, and press MENU botton to confrim, then press UP/DOWN button to adjust.



Press MENU button to show the follow menu. Press MENU button again to enter into PICTURE mode, press UP/DOWN button to choose the item, and press MENU botton to confrim, then press UP/DOWN button to adjust.



Press MENU button to show the follow menu. Press MENU button again to enter into FUNCTION mode, press UP/DOWN button to choose the item, and press MENU botton to confrim, then press UP/DOWN button to adjust.



Press : Automatic setting display parameter

Setup of the Device

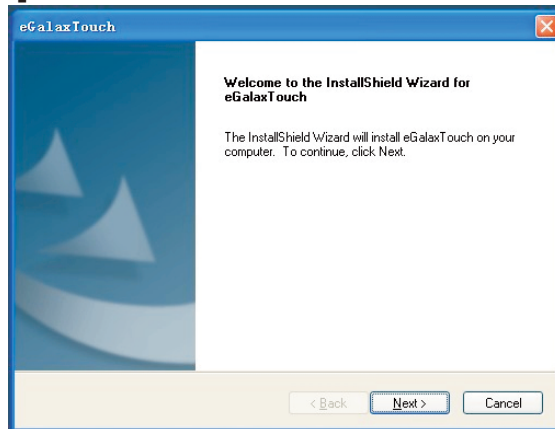
TouchKit is software, which contains of the touch panel controllers for the specified communication connectors, RS232, PS/2 and USB, and another

• Configuration support

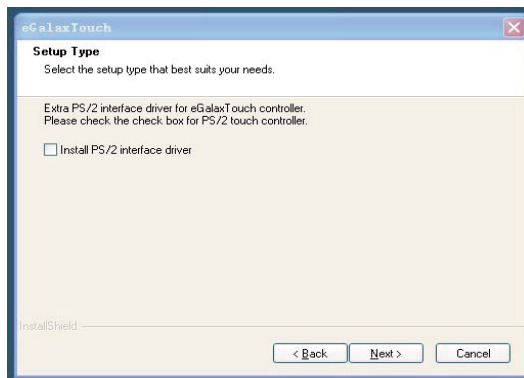
The calibration and draw test of touch panel are done by this utility. Besides, users can add or new RS-232 touch panel device.

Follow these steps to install **TouchKit**.

1. Put the **TouchKit** CD to CD-ROM.
2. Open the **Win2000_XP** directory.
3. Double click the **Setup.exe**, then windows starts to run the installation program.
4. Just click [**Next>**] button to continue installation.

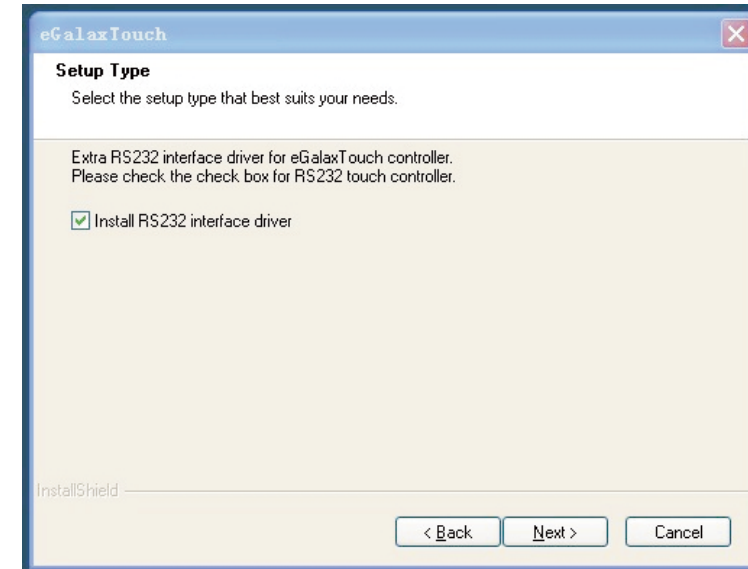


5. Check the check box if PS/2 touch controller is to be installed. The default setting is unchecked. Then Press [**Next>**] to continue installation.

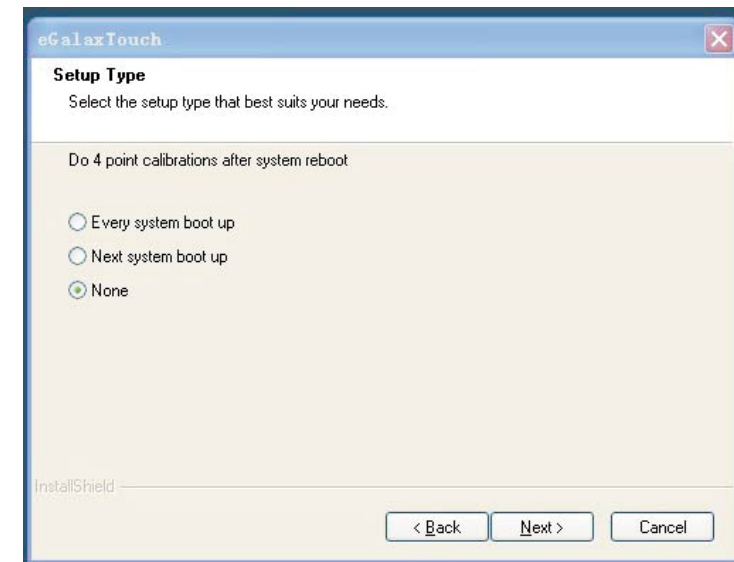


Setup of the Device

6. Choose the setup type that best suits your needs. There is a **TouchKit** accessory utility for choosing, **Auto 4Pts Calibration Utility**. Users can install the utility they want by checking the box. Then Press [**Next>**] to continue installation.

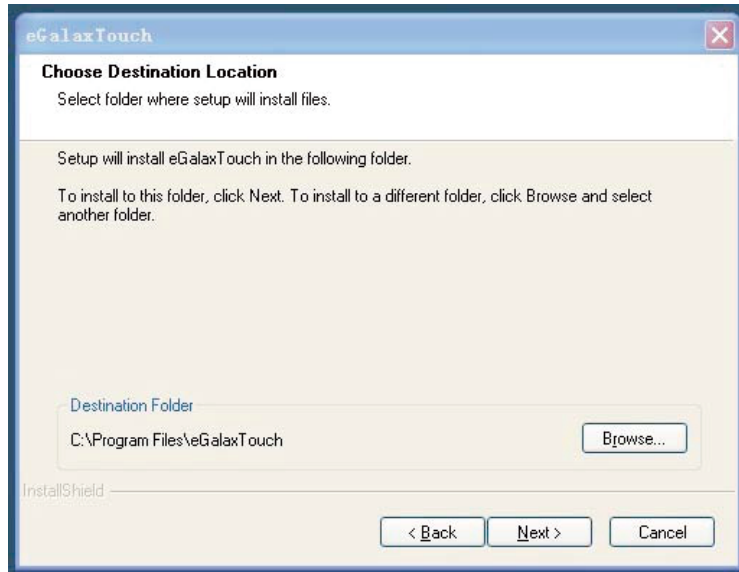


7. Please select 4 points calibration mode when system start. Then Press <**Next>** to continue installation.

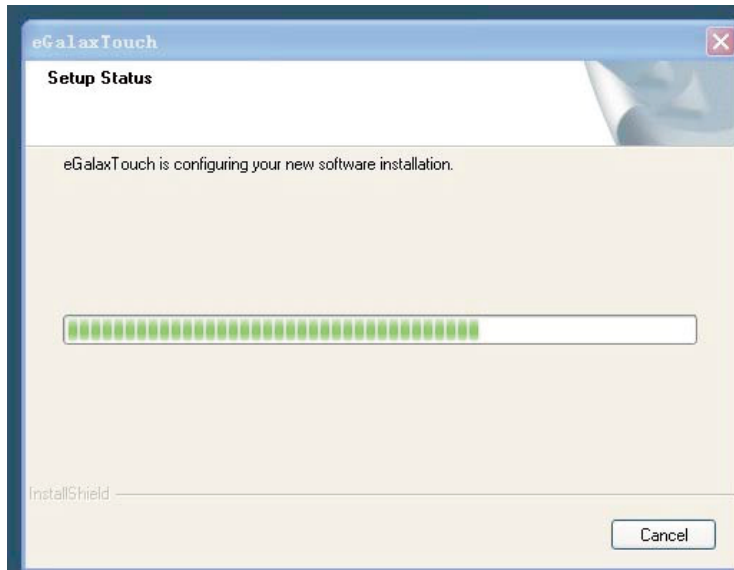


Setup of the Device

8. To choose your special software install path, please press “Browse” button.

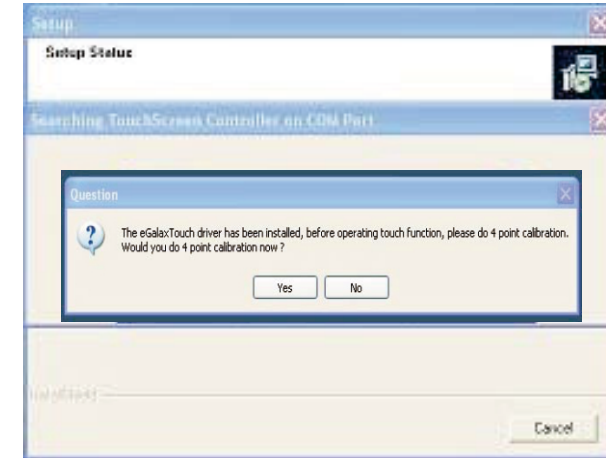


9. Select the appropriate folder where setup files will be installed. Then press [Next>] to continue installation.



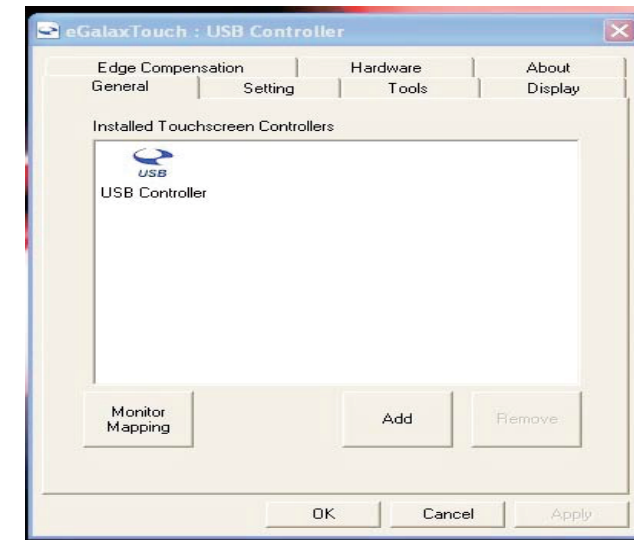
Setup of the Device

10. During installation, the setup program will scan Com port for Rs232 **TouchKit** controller. Once the controller was scanned, the setup program will display a dialog a dialog as.



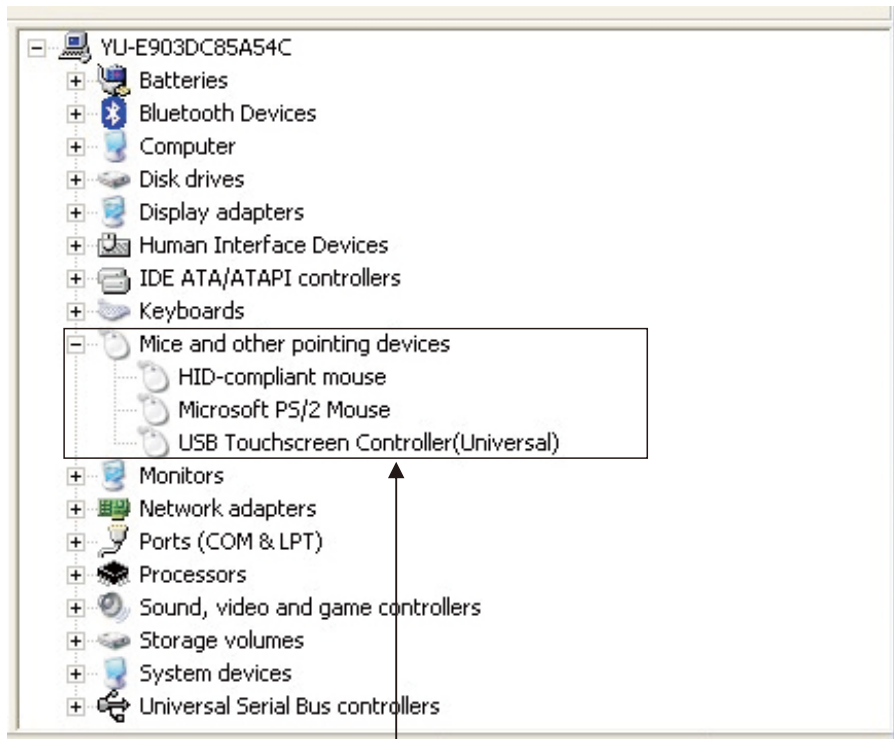
Click Yes to add the controller on the specified COM port automatically

11. Setup is complete. After **TouchKit** installation, the USB device will be found automatically as soon as it was Plugged into the computer. Then users can see the application program window.



Setup of the Device

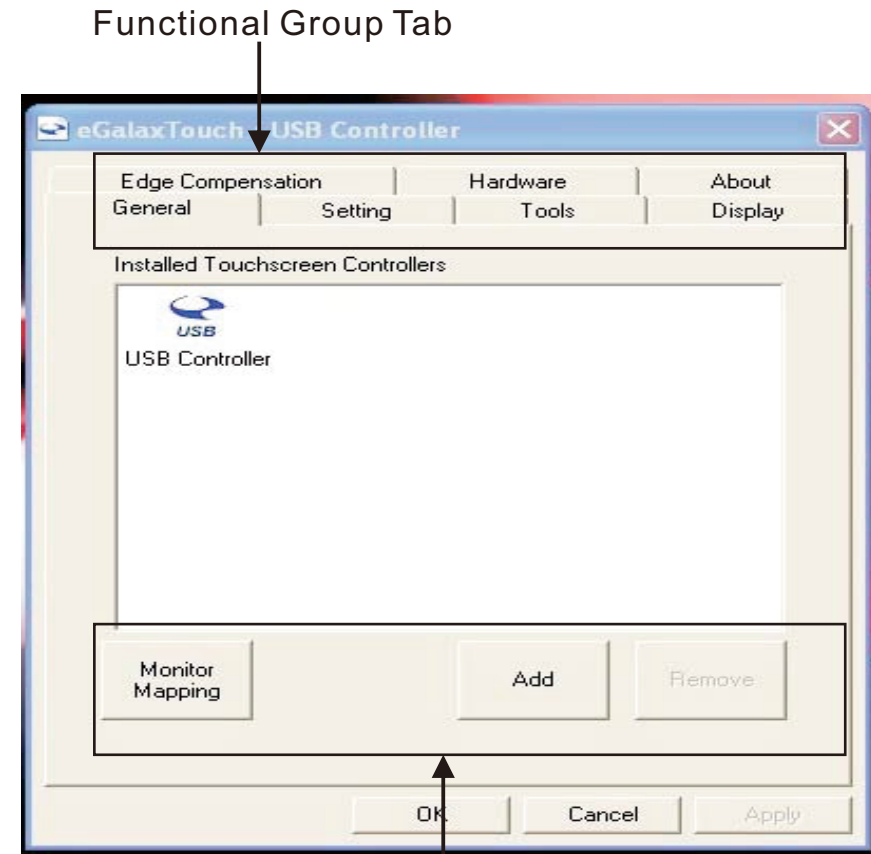
12. Users can check the situation of controllers in Device Manager. If the controller is set up well, there will be messages as the following picture.



TouchKit controllers works well

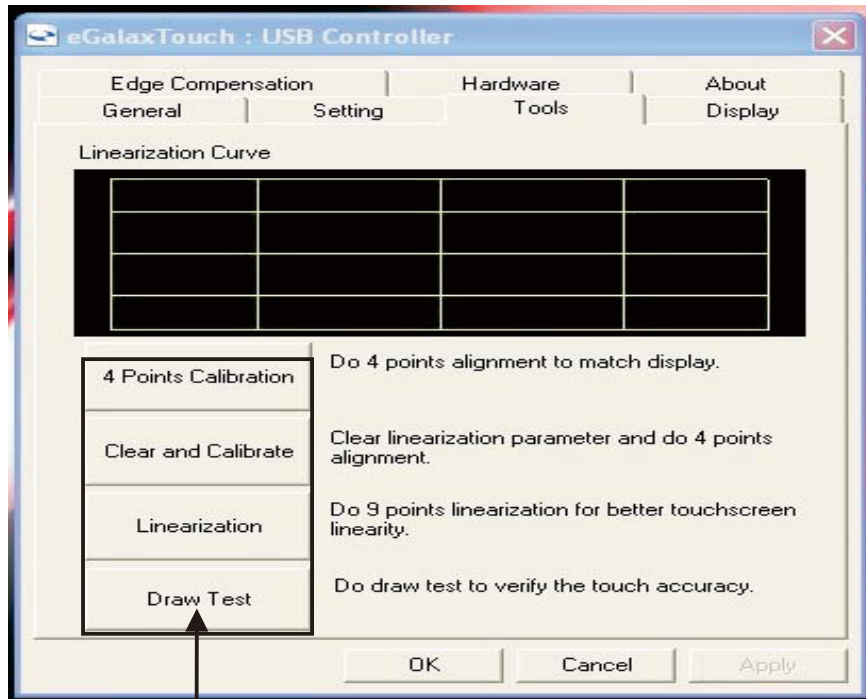
Configuration Utility

There are three property pages in **TouchKit** utility, and they **General**, **Monitors** and **About**. Each property page contains different functions to do the adjustments. Therefore, users can easily manage all the **TouchKit** controllers through **TouchKit** Utility.



General Function

General property page contains the functions of **devices Add/Remove Draw Test** and **4 Points Calibration/Clear Calibration/Linearization**



General Function

<4 Points Calibration>

Correct 4 point locations on screen with the panel. Press **[4 points Calibration]**, screen displays as follows



Touch the blinking symbol on panel until beep or stop blinking.

<Draw Test>

Test the drawing position related to the display screen on panel. Click on the **[Draw Test]** button. There will be a squared blue display



In drawing test window, users can click **[Clear]** button to clear the window. Also, users can click **[Quit]** or press mouse right button to quit from the drawing test.

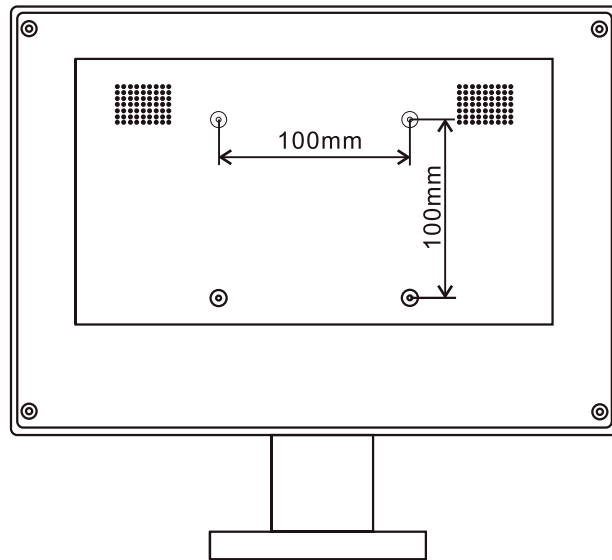
In drawing test window, users can verify the panel linearity, calibration capability, and drawing line quality.

Touch Controller Specification

Power requirements	+5VDC(Maximum 100mA, typical 70mA,50mV peak to peak maximum ripple)
Operating temperature	0° to 50℃
Storage Temperature	-40° to 80℃
Relative Humidity	95% at 60℃
Protocol	Rs232 Model:9600 bauds, None parity,8 data bits and 1 stop bit USB Model: USB 1.1 Low speed PS/2 Model: PS/2 mouse
Resolution	2048X2048
Report rate	Rs232 Model: Max. 160 points/sec USB Model: Max. 160 points/sec PS/2 Model: Max. 140 points/sec
Response time	Resistive: Max. 35ms Capacitive: Max. 20ms
Pin out definition	4 wire model: X+, Y+, X-, Y- 5 wire model: UL, UR, COM, LR, LL 8 wire model: X+, X+ref, Y+, Y+ref,X-, X-ref, Y-, Y-ref
Panel resistance	4,8 wire resistive model:200~900 ohm (5 wire model: UL, UR, COM, LR, LL) 8 wire resistive model: 50~200 ohm (pin to pin on drive layer)
Regulatory Approvals	FCC-B, CE

Touch Controller Specification

Calibration	Fast full oriental 4 points position
Compensation	Accuracy 25 points linearity compensation
Draw Test	Position and linearity verification
Language	Support 10 languages for Windows
Advanced Feature	1.Support monitor/ display rotation 2.Support multiple monitor/display 3.Support QVGA and Half-VGA function 4.Support edge compensation 5.Support constant touch
Controller Setting	1.Support multiple controllers 2.Dynamical add/remove controllers 3.Change Controller interface without reboot
Mouse Emulator	1.Right/Left button emulation 2.Normal/Click on touch/Click on release mode 3.Auto right button
Sound Notification	1.Sound option(No Sound/Touch Down/Lift UP) 2.Frequency adjustment 3.Duration adjustment
Double Click	1.Configurable double click speed 2.Configurable double click area
OS support	1.Windows 95/98/ME/NT4/2000/XP/Windows XP Tablet PC Edition 2.Windows CE 2.12/3.0/.NET 3.Linu(RedHat/Fedora/Mandrake/Suse/YellowDog) 4.iMac. OS9.xOSX 5.MS-DOS: Support display resolution: 320x200,640x200,640x350,640x480,800x600, 1024x768 and 1280x1024
COM port support	1.Support COM 1~COM 256 for Windows and Linux 2.Support COM 1~COM 8 for DOS



(Smaller sizes VESA holes:75x75mm)

The first step in troubleshooting a touchscreen system is to determine whether the problem is related to software, computer hardware or this touchscreen monitor

Do not confuse computer hardware or software problems with touchscreen problems. The easiest way to verify a computer hardware/software failure is to try the monitor on other computer..

Hardware problems may be caused by the touchscreen, controller, cabling, power supply, or by the integration of the touchscreen components in the display. Software problems are determined by a basic hardware functionality test. If the hardware transmits coordinates Correctly, then the problem is with the driver or the calibration software.

Problem: No image appears on screen.

Check that all the I/O and power connectors are correctly installed and well connected as described. Make sure the pins of the connectors are not crooked or broken. Reconfigure the resolution of your computer to make it less than or equal to 1024 x 768.

Problem: Partial Image or incorrectly displayed the image.

Check to see if the resolution of your computer is higher than that of the LCD display. Reconfigure the resolution of your computer to make it less than or equal to 1024 x 768.

Problem: Image has vertical flickering line bars. Image is unstable and flickering

Check and reconfigure the display mode of the vertical refresh rate of your graphic card to make it compatible with the LCD display.

Problem: Image is scrolling

Check and make sure the VGA signal cable (or adapter) is well connected. Check and reconfigure the display mode of the vertical refresh rate of your graphics card to make it compatible with the LCD Display.

Limited Warranty

Warranty is one year from the date of purchasing this product. Please ensure you carefully keep original purchase proof with date, and record the Serial Number label on the back of the monitor. It is the only means of identifying your product.

EXCLUSIONS (WHAT IS NOT COVERED)

1. Accessories such as power adapter, stylus etc. are not covered under this warranty policy.
2. This warranty does NOT cover freight cost, insurance and any other incidental charges.
3. This warranty becomes void if the monitor shows evidence of having been dropped, impact, sand and/or water damage, mishandling, tampering, battery or chemical corrosion, use contrary to this instruction manual.