

# Installing



2023

Our goal is to bring energy, warmth and pleasure into your personal space. It's great to be here.

Safety  
instructions 6

---

Components  
and features 7

---

Assembly  
instructions 9

---

Cleaning and  
maintenance 16

---

Troubleshooting 17

---

# Safety instructions



**We recommend installation  
by a licensed electrician.**

## **Safety instructions**

These instructions are provided for your safety. It is very important that they are read completely before beginning the installation of your fixture.

1. Turn off electricity at the main circuit breaker panel before beginning installation.
2. This direct wire fixture must be installed by a certified and licensed electrician. The customer should not attempt to install.
3. This fixture has been rated for up to 12 (N) 5W max 230V E12 base bulbs. To avoid the risk of fire, do not exceed the recommended wattage.
4. If any special control devices are used with this fixture, follow the instructions to assure full compliance with the N.E.C. requirements.
5. This fixture should only be used with a trailing edge dimmer.
6. Mounting hooks and wall anchors are not included. To select the proper type of mounting hook /wall anchor for your wall/ceiling please contact your local hardware store for assistance. If you have any questions, contact a licensed electrical contractor.

## **Warnings**

- Do not mount or unmount the glass globes if the fixture or light bulbs are hot.
- All wires are connected. Do not remove the ceiling light from its packaging by pulling on the power cord, as a bad connection may result.
- Do not use if the light cable/cord is damaged.
- To reduce the risk of fire, electrical shock or personal injury, always turn off the light fixture and allow it and the globes to cool prior to replacing light bulb.
- When mounting the fixture, always use the cotton gloves included.
- Do not touch bulb when fixture is turned on. Do not look directly at lit bulb.
- Keep flammable materials away from lit bulb.

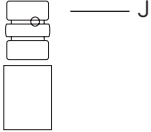
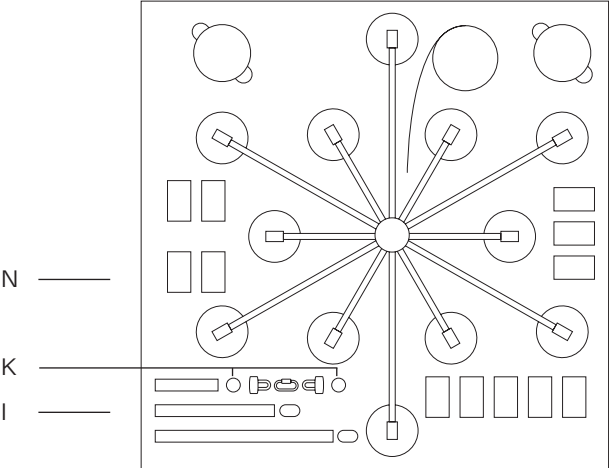
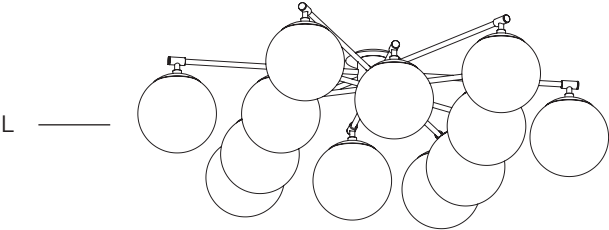
---

# Components and features

## FEATURES

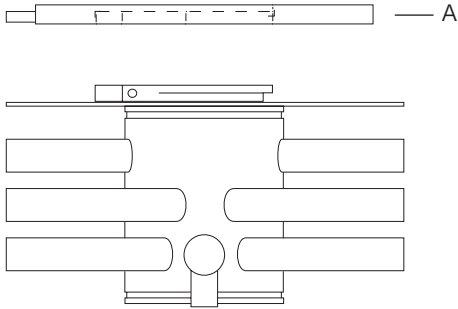
- Hand-crafted in brass
- Mouth-blown glass globes

## COMPONENTS

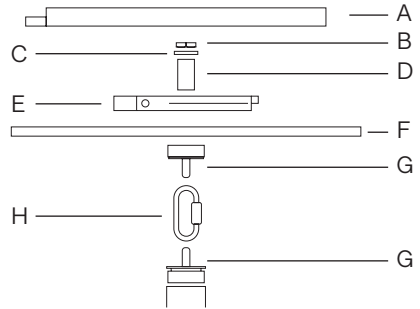


---

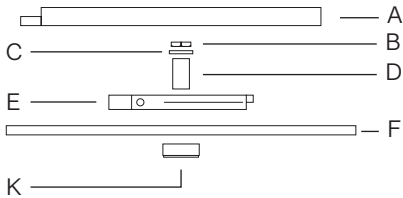
## Flush Mount



## Vaulted Ceiling Mount



## Fixed Mount



- A Top ceiling plate (1x)
- B M10 nut (1x)
- C Nordlock washer (1x)
- D M10 nipple for vaulted mount and extensions (1x)
- E Bottom ceiling plate (1x)
- F Brass plate (1x)
- G Loop nuts (2x)
- H Quick-link (1x)
- I Extension rods (3x)
- J Extension nipples (2x)
- K M22 nipple for vaulted mount and extensions (2x)

- L Glass globes (12x)
- M Globe caps (12x)
- N 5W LED E12 bulbs (12x)

### Tools Enclosed:

Pair of cotton gloves

### Not Included

(recommended for installation):  
Wall anchors  
Screw  
Electric drill

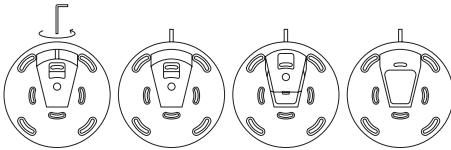
---

# Assembly instructions



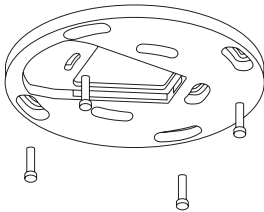
Make sure you cut off power supply at the main fuse box/circuit breaker before commencing any work.

1



Use the included allen key to unscrew the small lock screw on the ceiling plate and disconnect the top ceiling plate [A].

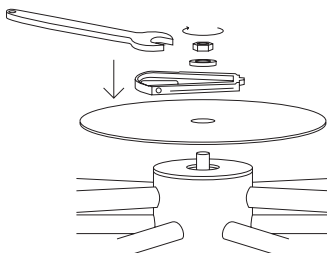
2



Place the plate against the ceiling, mark spots for anchors and drill the holes. Mount the plate to the ceiling in the selected spot.

**NOTE:** The position of the ceiling plate determines the position of the fixture, please plan carefully.

3

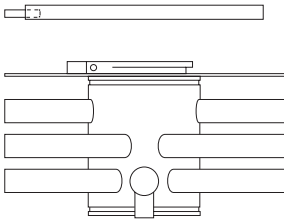


Place the brass plate [F] on the top of the fixture, place the bottom ceiling plate [E] on the brass plate and use the nordlock washer [C] and nut [B] to secure it all together.

**NOTE:** Steps 3-7 shows flush mount. For fixed mount go to step 8, for vaulted ceiling mount go to step 14.

---

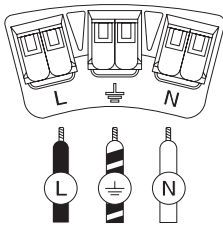
4



Carefully lift the fixture and make all necessary electrical connections.

---

5

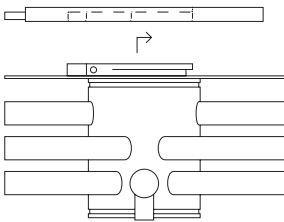


Use the included terminals to connect the wires and place the terminal holder flat in the ceiling plate.

**NOTE:** We recommended installation by a licensed electrician.

---

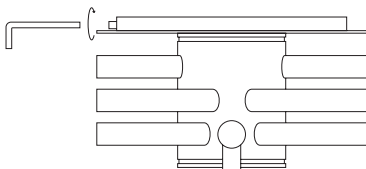
6



Slide the fixture plate into the ceiling plate as in the picture. Make sure no wires are squeezed.

---

7

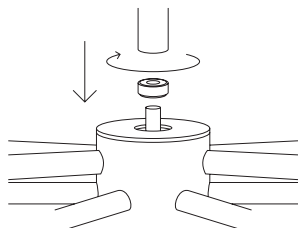


Make sure you screw in the lock screw using the included allen key.

**NOTE:** Risk of the fixture falling off if lock screw not screwed in. Go to step 18 to mount the glass globes.

---

8

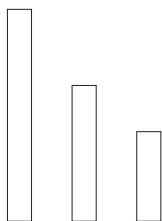


Screw the M22 nipple [K] on the main fixture and screw at least 1 extension rod on the nipple.

**NOTE:** Steps 8-13 shows fix mount. For flush mount go to step 3, for vaulted ceiling mount go to step 14.

---

9



Are you installing more extension rods?

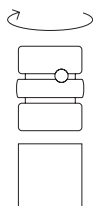
**YES: Continue to Step 10**

**NO: Jump to Step 12**

**NOTE:** If you are hanging the fixture on a vaulted ceiling, please proceed to Step 21!

---

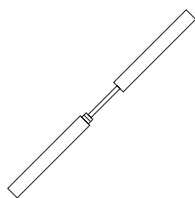
10



Screw the extension nipple [I] into the first extension rod used in step 8 rod and each next extension rod but last.

---

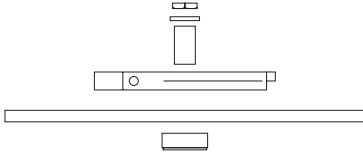
11



Carefully pull the cord through selected extension rods [E] and screw them all together.

---

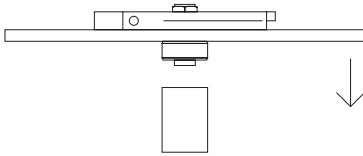
12



Use the nut [B], nordlock washer [C] and the M22 nipple [K] to connect the brass plate [F] and bottom ceiling [E] plate as in the picture.

---

13

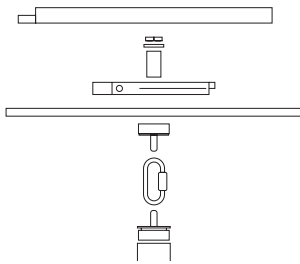


Screw the whole ceiling plate set onto the top extension rod. Perform steps 4-7 to mount the fixture onto the ceiling.

**NOTE:** Go to step 18 to munt the glass globes.

---

14

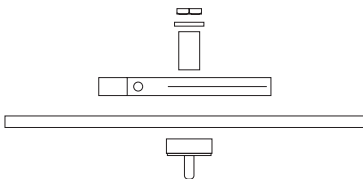


Perform steps 8-11 from the user instructions and carry on with step 15.

**NOTE:** Steps 14-17 shows vaulted ceiling mount. For flush mount go to step 3, for fix mount go to step 8.

---

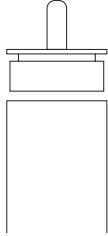
15



Use the nut [B], nordlock washer [C] and the correct loop nut [G] to connect the brass plate [F] and bottom ceiling [E] plate as in the picture.

---

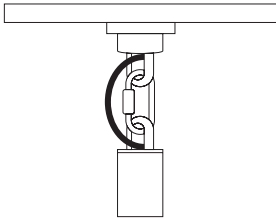
16



Screw the other loop nut [G] onto the top extension rod.

---

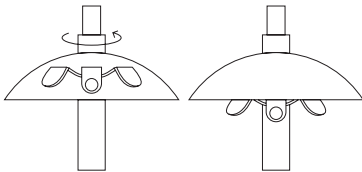
17



Connect the 2 loop nuts with a quick-link and slide the cord through the loops and the ceiling plate. Perform steps 4-7 to mount the fixture onto the ceiling.

---

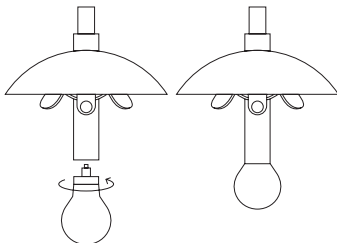
18



To start mounting the glass globes, turn the cap on the selected arm counterclockwise until it stops. Follow steps 18-22 for each arm.

---

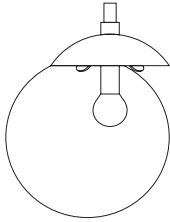
19



Insert the 12 5W LED E12 bulbs.

---

20

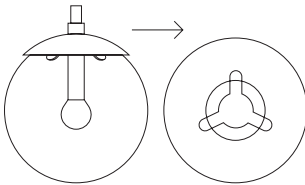


Place the globe opening on one of the clamps and slide it on as far as possible. Repeat the same movement for one more clamp.

**NOTE: Included cotton gloves must be worn when handling glass globes.**

---

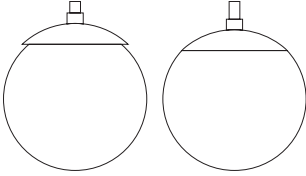
21



Tilt and slide the globe as in the drawing to hang it on the last clamp.

---

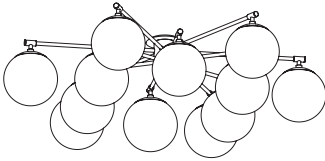
22



Turn the cap clockwise to secure the globe in position. Repeat for each arm/globe.

---

23



Restore power and enjoy your lamp.

---

# Cleaning and maintenance



Make sure you cut off power supply to the lamp before commencing cleaning operations.

Components	Maintenance	Tools
Brass Frame	Clean every month using a soft cloth, dampened slightly with water. Make sure the frame is dry before switching the lamp back on.	Soft cloth, water
Glass globes	Clean regularly with a soft dry cloth. Clean only the outside of the globe. If especially dirty, use a wet cloth first. Grease can be removed with a gentle glass cleaner.	Soft cloth, Cotton gloves (!)
Light bulbs	Make sure your power supply is off before changing the bulb. Unscrew the globe where bulb needs replacing. Gently remove the bulb by pulling it out and replace with a LED bulb of the same parameters.	LED bulbs, Cotton gloves (!)

**NOTE:** Please remember, solid brass may tarnish over time. This is a natural process. Make sure you follow our guidelines to preserve the great look of lighting for years.

---

# Troubleshooting

Problem	Possible Cause	Action
Tarnishing	Oxidation of brass is a natural process. Although it is lacquered, its color may change slightly over time.	No action is necessary apart from regular cleaning. See the Maintenance section.
Globe deformations	Mouth-formed glass globes are beautiful but not perfect. The process leaves a slight deformation at the bottom of the globe.	No action is necessary. All globes undergo a quality check. Should you have any doubts, please send us a photo of the deformed globe and we will act accordingly.

**NOTE:** Dear client, please be assured our team strives to deliver highest quality products. The handmade nature of the products offers a unique aesthetic experience and allows for small imperfections, which is inherent in crafts. If solutions offered below are not sufficient, please do not hesitate and contact our customer service.

---

# Having trouble?

We're sorry to hear that.

Our enlightened objects are designed for longevity. Each piece is made by hand to ensure the highest possible quality and a unique aesthetic experience. This means you may encounter small surface imperfections. We like to think of them as whispered greetings from our craftspeople. But should you have any concerns about your product and the previous solutions fail to help, please don't hesitate to email us.