

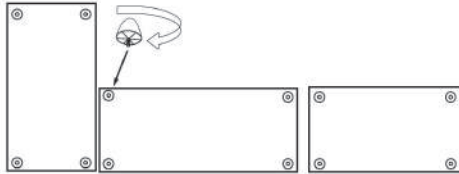


ASSEMBLY INSTRUCTION

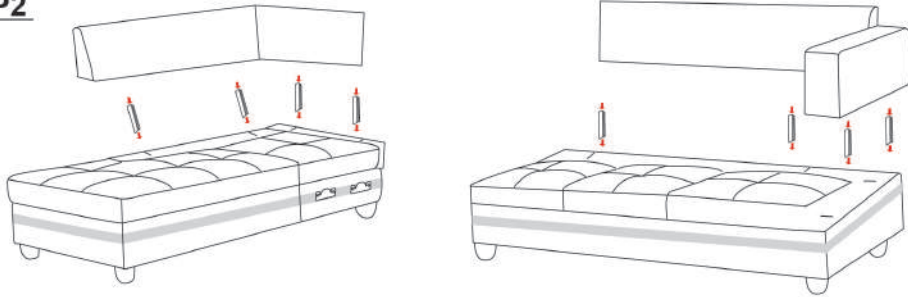
Please follow below Assembly Instruction step by step.

HARDWEAR LIST		
NO.	DESCRIPTION	QTY (pcs)
A	 leg	12
B		8

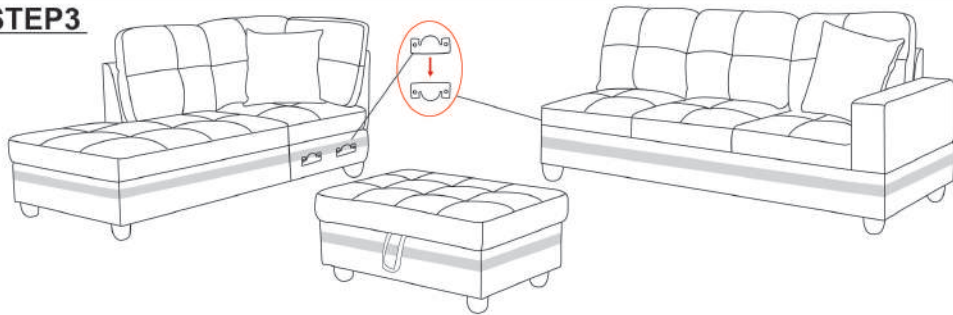
STEP1 ATTENTION:
LEGS LOCATION:
Please check zipper
compartment underneath the seat area.



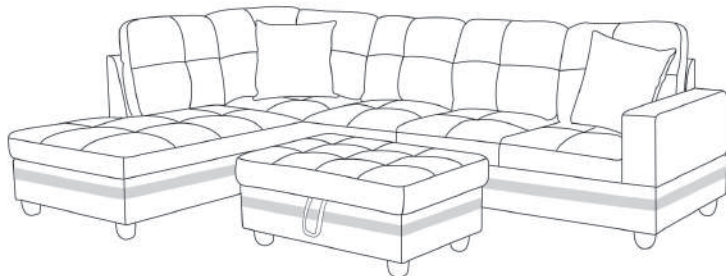
STEP2



STEP3



STEP4

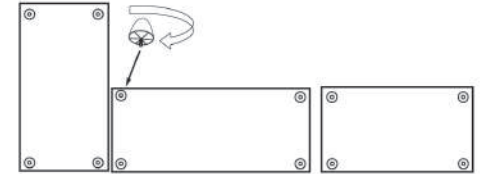


ASSEMBLY INSTRUCTION

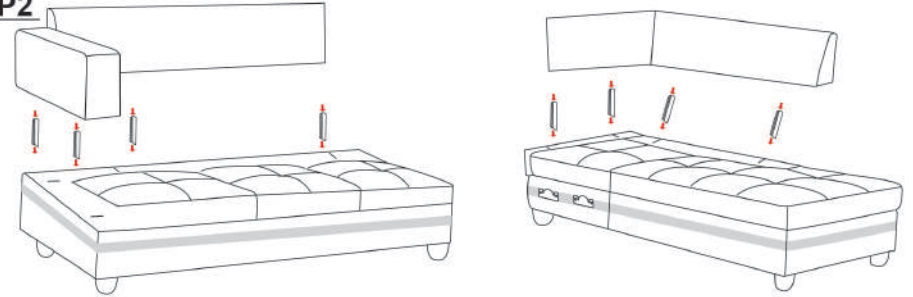
Please follow below Assembly Instruction step by step.

HARDWEAR LIST		
NO.	DESCRIPTION	QTY (pcs)
A	 leg	12
B		8

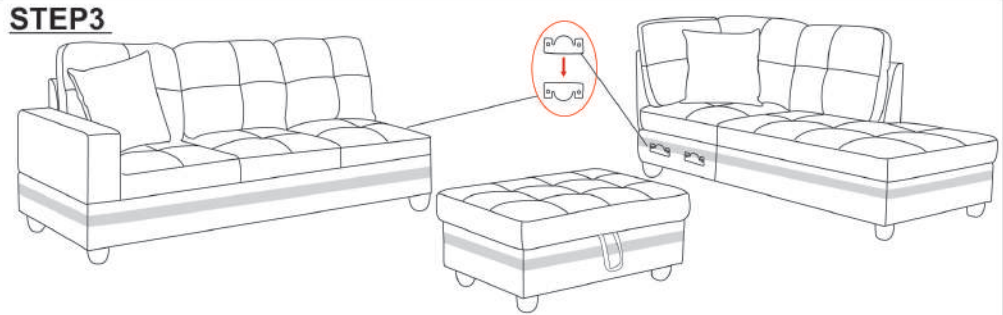
STEP1 ATTENTION:
LEGS LOCATION:
Please check zipper
compartment underneath the seat area.



STEP2



STEP3



STEP4

