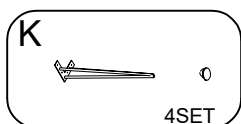
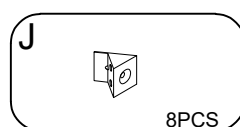
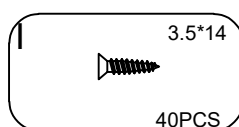
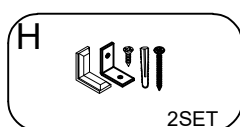
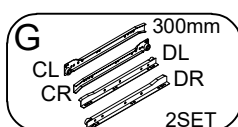
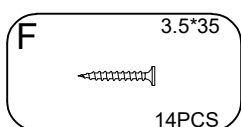
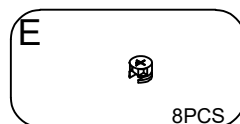
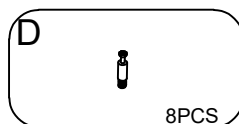
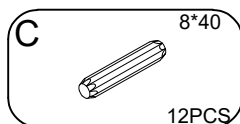
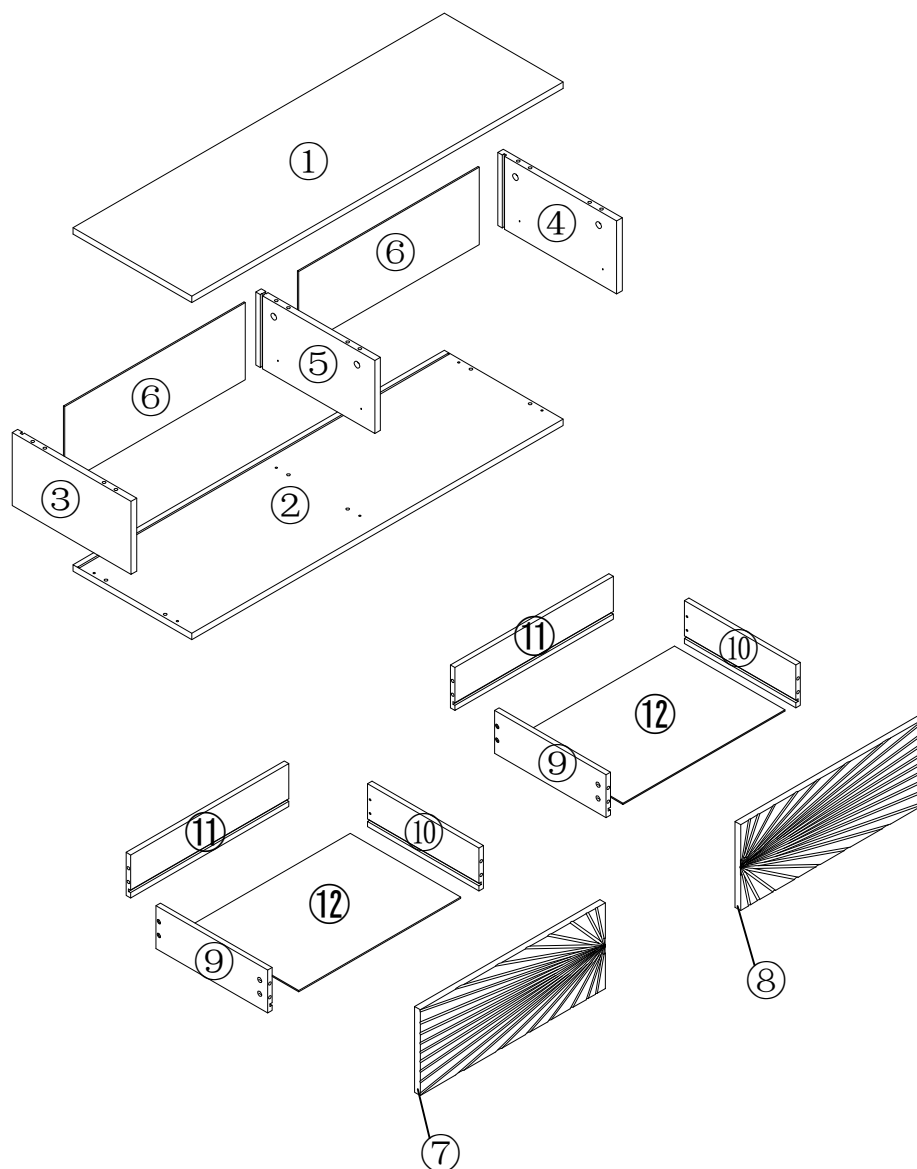


Before the Installation

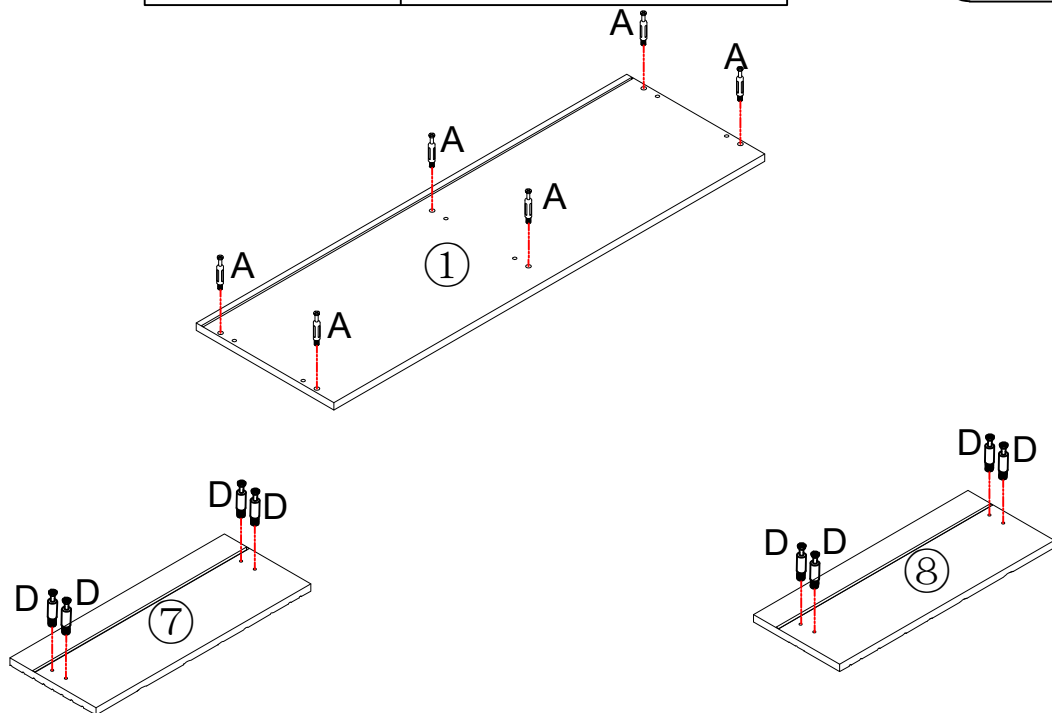
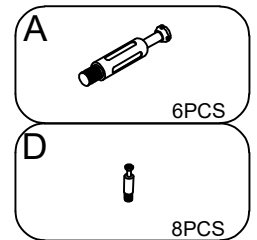
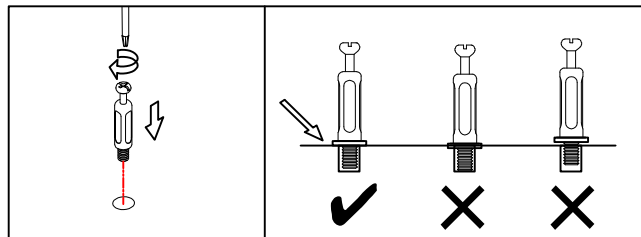
1. Do not throw away packing materials until assembly is complete for small parts may come loose inside the carton during shipment. If parts are missing, please contact us.
2. Assemble this item on a soft surface, such as carpet to protect the finish.
3. Proper assembly of this item requires 2 people.
4. Do not fully tighten the screws during initial assembly. Fully tighten screws only once all pieces which are correctly assembled.
5. If you encounter any problems during installation, refer to two solutions: Follow the installation product page or contact our customer service.

Care and Cleaning

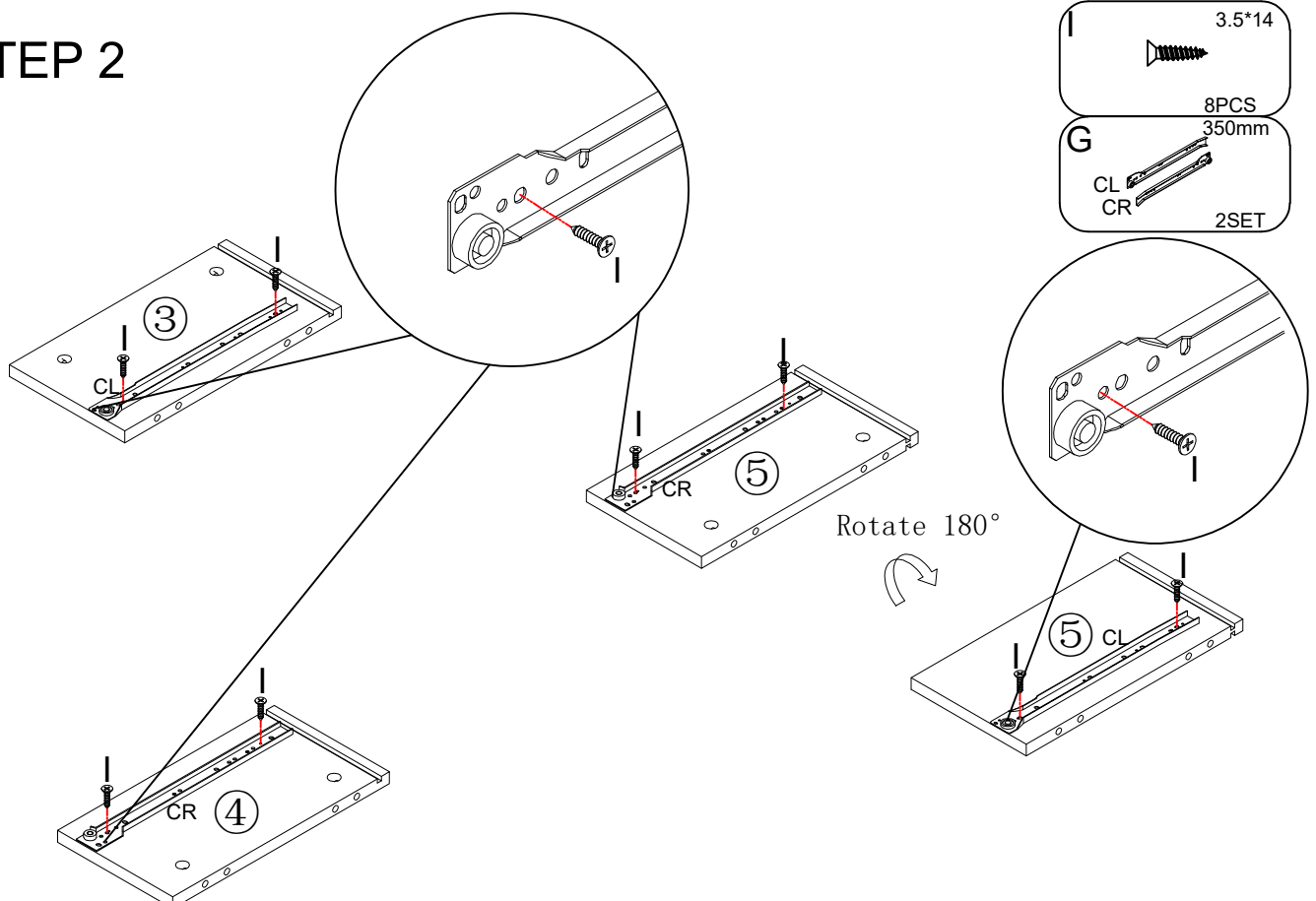
1. To protect the finish, avoid use chemicals and household cleaners.
2. All hot serving dishes should be placed on a pad.
3. Any liquid spilled onto the top should be cleaned up immediately with a damp cloth.



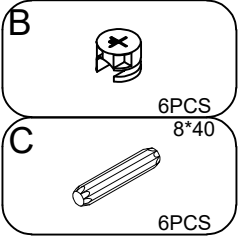
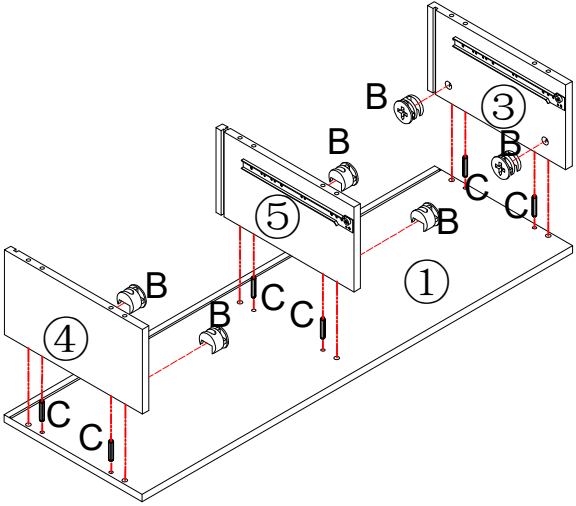
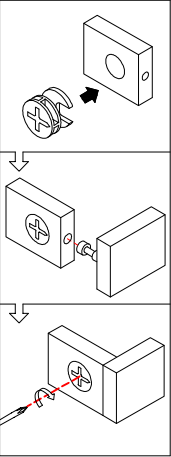
STEP 1



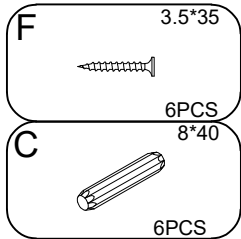
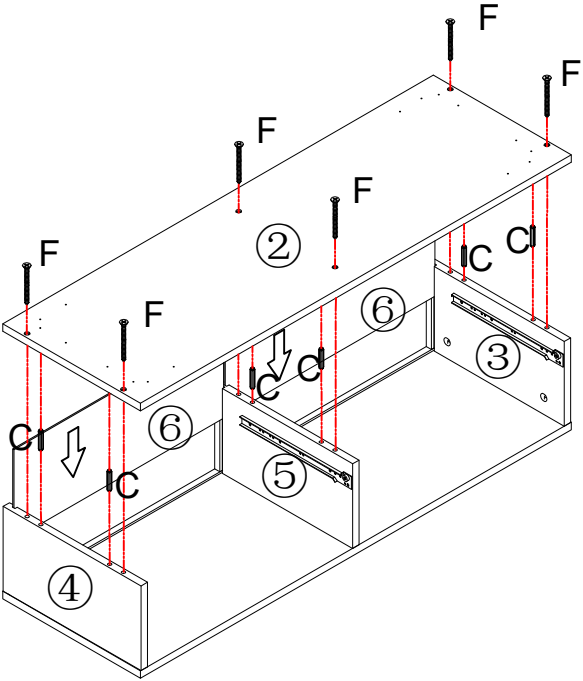
STEP 2



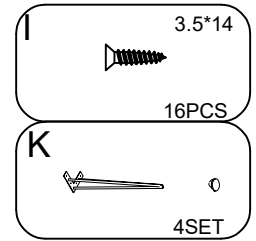
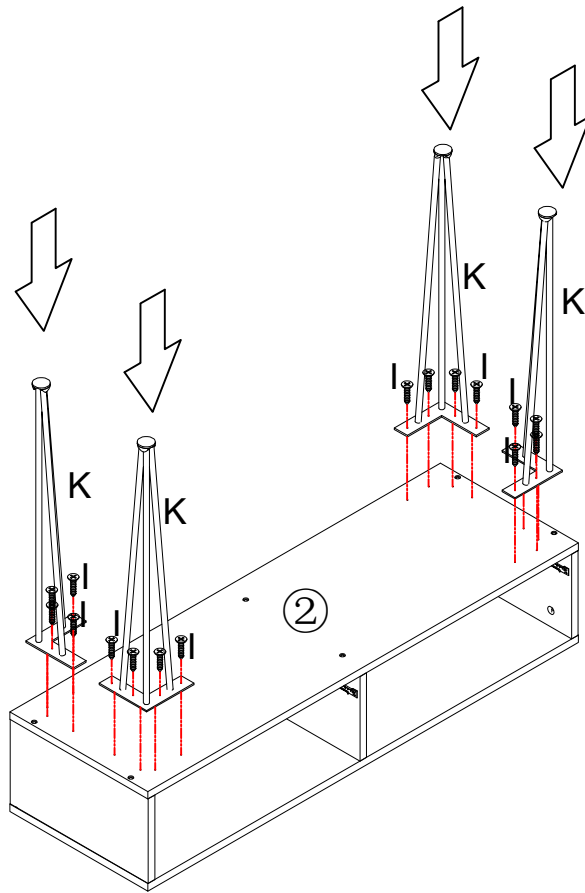
STEP 3



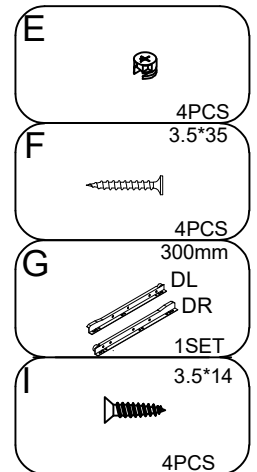
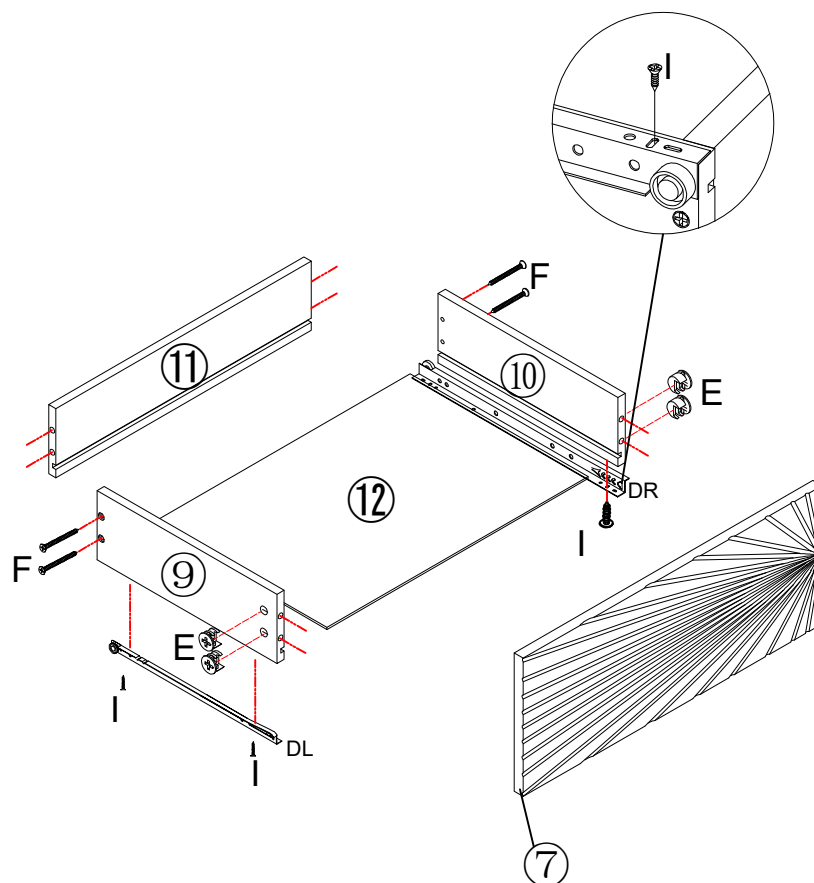
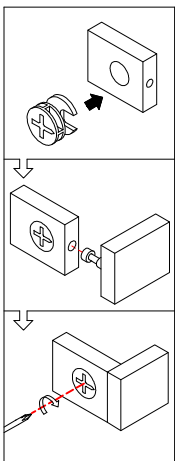
STEP 4



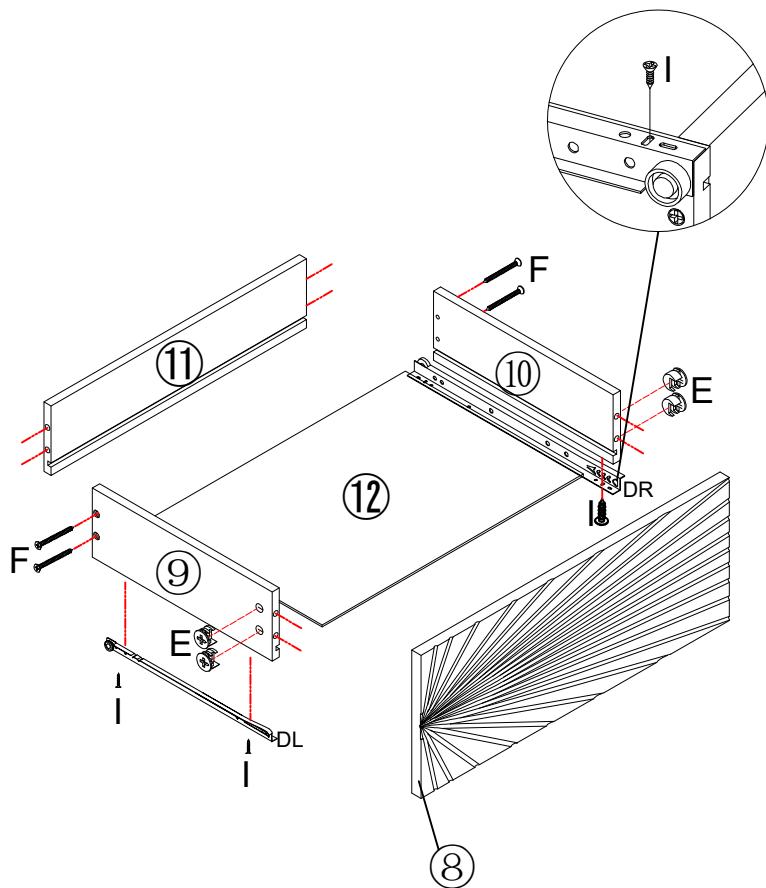
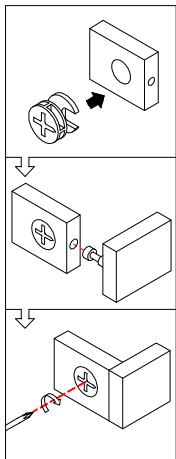
STEP 5



STEP 6

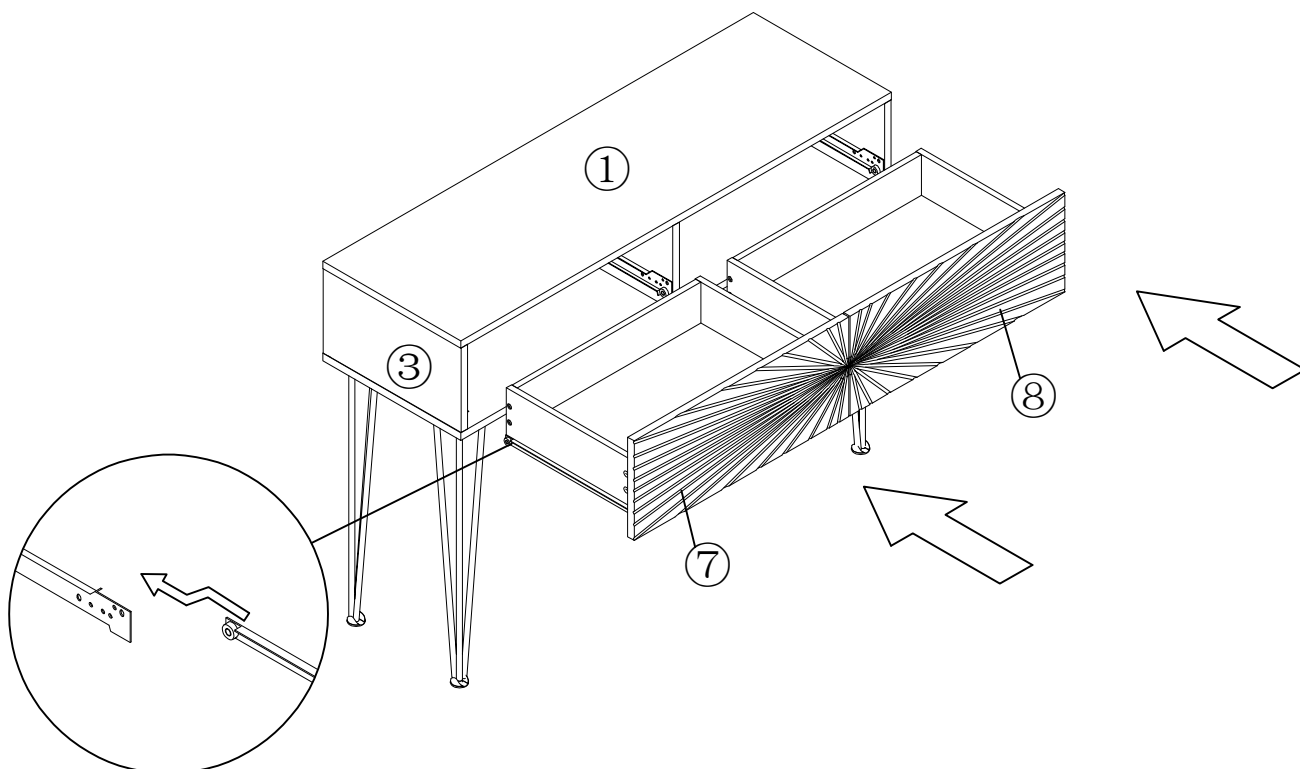


STEP 7

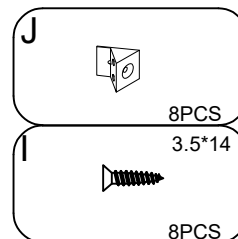
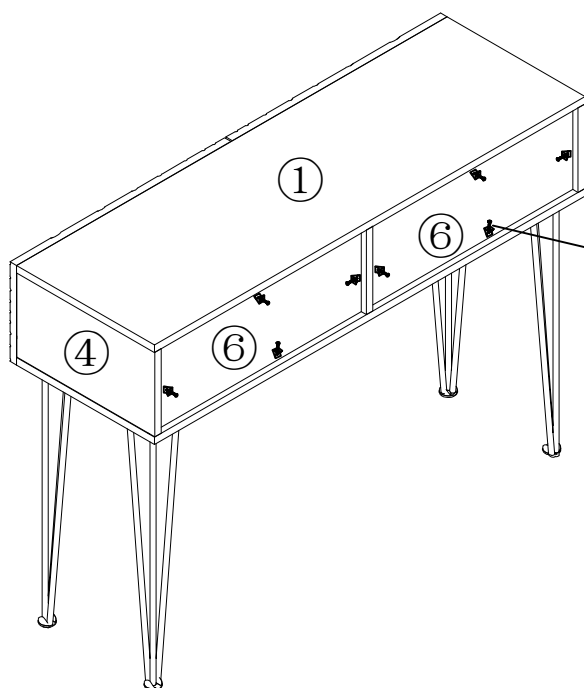


- E** 4PCS
3.5*35
- F** 4PCS
300mm
DL
DR
- G** 1SET
3.5*14
4PCS

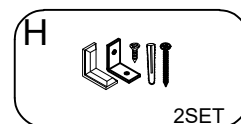
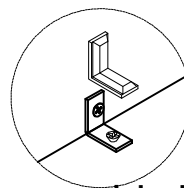
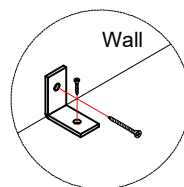
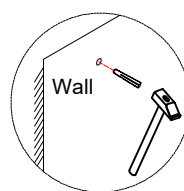
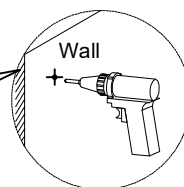
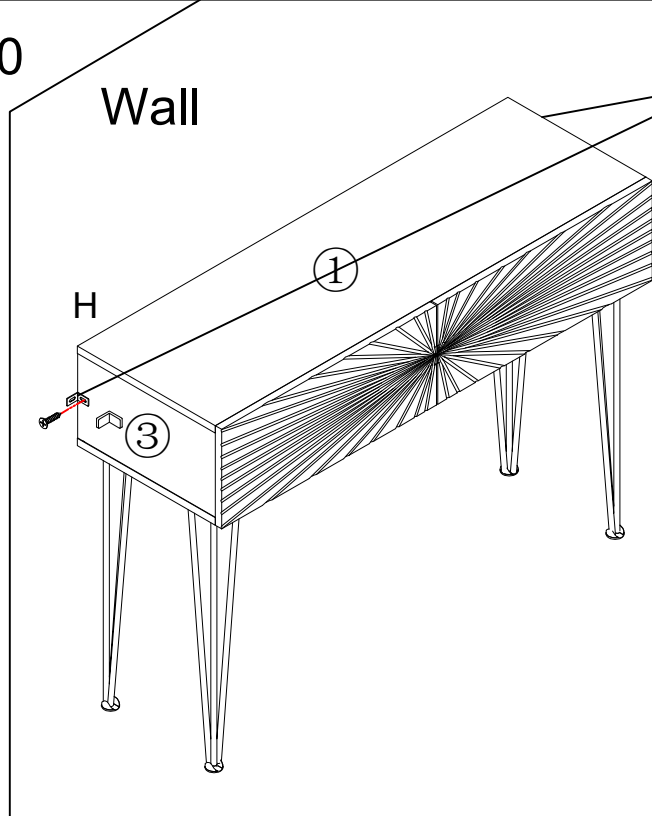
STEP 8



STEP 9



STEP 10



-Note: This is not a clothing storage cabinet and it is not recommended to use it as a clothing storage cabinet.
 -All cabinets come with TRD, stainless steel or our "L-Bracket" when shipped.