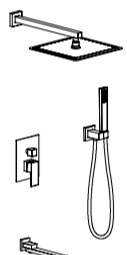


## Instruction for installation and use of shower head



The product is subject to patent rights.  
Thank you for purchasing this product. Please read the instruction carefully before using it.

This product is dedicated to your health, make your life more comfortable, perfect and convenient.  
All information is written based on the latest published product information to date. The information is subject to change without notice. Please refer to the user manual for the latest information. The manual includes important content about installation, maintenance and safety. Please give these contents to users for reading.

### Contents

|                                    |    |
|------------------------------------|----|
| 1. Installation environment        | 1  |
| 2. Install the auxiliary tool      | 2  |
| 3. Packing list                    | 3  |
| 4. Installation dimension          | 4  |
| 5. Installation method and methods | 5  |
| 6. Repair and maintenance          | 11 |

### 1. Installation environment

- Before installation, confirm whether the water inlet pipeline is properly installed and has been flushed with clean, filtered water to remove any debris or sediment. The manual includes important content about installation, maintenance and safety. Please give these contents to users for reading.
- The water inlet of the showerhead must be properly installed and flushed by the factory. Please do not disassemble it yourself.
- The size of the product shower head matches the size of the shower mounting hole.
- Water pressure requirement: 0.05MPa/0.5bar pressure (0.5MPa). To ensure the good use of the shower, please keep the water supply pressure of cold and hot water balanced.
- Water temperature requirement: the cold water temperature is 90-120°F (32-49°C), the hot water temperature is 110-120°F (43-49°C), and the recommended temperature is 100-110°F (38-43°C). Please do not use the shower head for long time at high temperature. The water temperature should be kept below 120°F (49°C) to avoid scalding. The water temperature should be kept below 100°F (38°C) to avoid scalding. Please refer to the product manual for the correct use of the shower head.
- When installing the shower, be sure to make the hot and cold water inlet needs of the shower fit with the wall and the shower will work.
- Check the installation of electrolytic products such as shower. It must be correct and protected. If there is corrosion, clean it and avoid dripping on the surface. It must be cleaned every 30 minutes.
- If customers go out for a long time or don't use the shower for a long time, please close the main valve of the shower and turn on the shower valve to release the pressure and accumulated water in the shower.

### 2. Installation of auxiliary tools

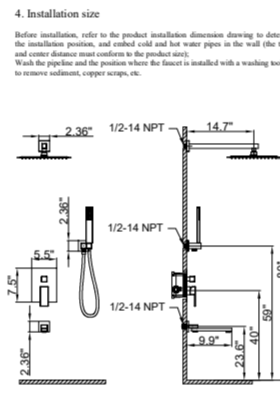


### 3. Packing list

When you open the product package, please count the accessories with the packing list. If there is missing, please contact the dealer soon. (Note: The product appearance may be different.)

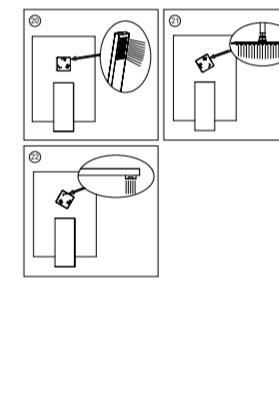
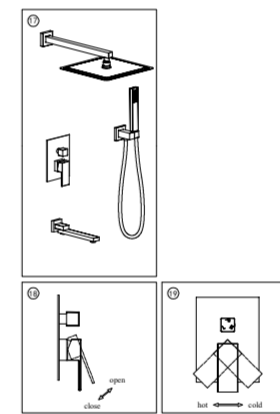
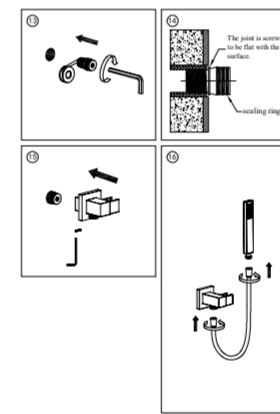
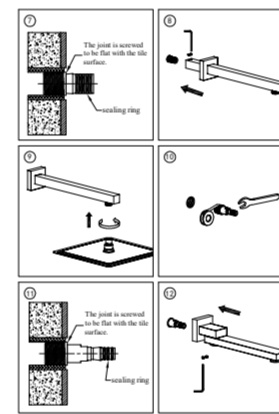
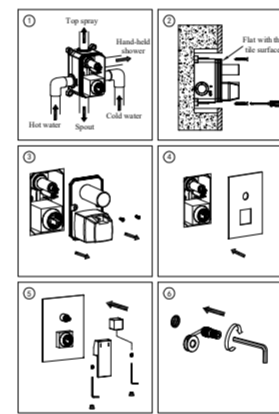
| No. | Name              | Quantity |
|-----|-------------------|----------|
| 1   | Shower head       | 1        |
| 2   | Shower arm        | 1        |
| 3   | Shower hose       | 1        |
| 4   | Shower head cover | 1        |
| 5   | Shower head cap   | 1        |
| 6   | Shower head cap   | 1        |
| 7   | Shower head cap   | 1        |
| 8   | Shower head cap   | 1        |
| 9   | Shower head cap   | 1        |
| 10  | Shower head cap   | 1        |
| 11  | Shower head cap   | 1        |
| 12  | Shower head cap   | 1        |
| 13  | Shower head cap   | 1        |
| 14  | Shower head cap   | 1        |
| 15  | Shower head cap   | 1        |
| 16  | Shower head cap   | 1        |
| 17  | Shower head cap   | 1        |
| 18  | Shower head cap   | 1        |
| 19  | Shower head cap   | 1        |
| 20  | Shower head cap   | 1        |

### 4. Installation size



### 5. Installation items and methods

- The shower body has been tested and debugged before leaving the factory. Please do not disassemble it yourself.
- Before installing the shower, please be sure to confirm whether the water inlet pipeline and angle valve are correctly installed. The expansion and contraction of the pipeline may cause the shower to vibrate. Please confirm the shower and its accessories are correctly installed.
- After installation, please check whether the joints are tightly connected and whether the pipeline leaks.
- The working water pressure of the shower is 0.05MPa/0.5bar, and the water inlet pressure is 0.5MPa/5bar.
- When installing and using the shower, please use normal torque to prevent the handle and hot/cold water handle.
- When using shower bars on cold water lines, and these bars are hot water to adjust the temperature, use a bar.
- Users must cover and protect the electrolytic products such as shower when working them. If there is corrosion, clean it and avoid dripping on the surface. It must be cleaned every 30 minutes.



### 6. Repair and maintenance

- To keep the shower bright and clean, please clean the shower frequently or regularly.
- Rinse with water only, and dry the shower with soft cotton cloth.
- Do not use detergent containing coarse particles such as cleaning powder or scouring powder. Clean brush, spray disk or sponge, avoiding spraying it directly.
- Do not use any acidic cleaning agent or rough-surfaced agent or soap to polish.
- When the water flow of the shower is obviously reduced, please clean the filter screen of the shower head and the rubber particles of the shower head. It is not to affect the water flow of the shower head or block it. For example, the water flow of the shower head is blocked by the rubber particles. Please clean the rubber particles of the shower head by hand or use strong brush. It must be done in the rubber particles of the shower head.
- If a lot of cleaning work is needed, please follow the following procedures:  
 a. Turn the shower and hot/cold water to normal and make them hot water as far as possible.  
 b. Turn off the shower, using spray to remove rubber disk and hot water. Mild liquid detergent. Please choose that has no grinding effect and use in completely neutral and avoid according to the manufacturer's instructions.  
 c. Turn off the shower.  
 d. Shower can be used in hot water, then it will be used in hot water and avoid with high temperature or with special brushes.  
 e. After cleaning, please clean the shower with clean water and wipe from dry with soft cotton cloth.