



CHELSEA

Recliner Chair

Item Number:

ITI-UK-CHEL-GREY/ ITI-UK-CHEL-SAND/

ITI-UK-CHEL- EGG/ ITI-UK-CHEL-VAN-BOU

**IMPORTANT: PLEASE READ CAREFULLY AND RETAIN
THESE INSTRUCTIONS FOR FUTURE REFERENCE.**



SAFETY PRECAUTIONS

This chair conforms to BS EN 12520: 2015. To ensure that your Il Tutto Chair is used in accordance with these instructions, please read them fully. Your child's safety may be affected if you do not follow these instructions.

Please follow these instructions carefully to assemble your Il Tutto Chair. If you are missing any parts or require some assistance please contact us.

WARNING: ASSEMBLY SHOULD BE CARRIED OUT BY A COMPETENT ADULT ONLY.

WARNING: A CHILD'S SAFETY IS YOUR RESPONSIBILITY.

WARNING: DO NOT SIT ON THE EDGE OF THE SEAT, ARMRESTS OR ON THE BACKREST AS THIS COULD CAUSE THE CHAIR TO TIP OVER.

WARNING: DO NOT LEAVE CHILDREN UNATTENDED ON OR BESIDE THE CHAIR.

- Be aware of the risk of open fire and other sources of heat, such as electric bar fires, gas fires, etc. in the near vicinity of the glider chair.
- Do not use the glider chair if any part is broken or missing. Use only spare parts approved by the manufacturer.
- All assembly fittings should be tightened properly and care should be taken to ensure that no screws are loose, as a child could trap parts of the body, or clothing (e.g. ribbons, drawstrings, necklaces) this could lead to strangulation.
- Regularly check that all fittings and components of the rocking chair are fully tightened and in working order.
- During assembly children should be kept away from the product due to possible risk of injury.

MAXIMUM **WEIGHT LIMIT 130KG**


iL TUTTO
Est. 2007

Filling material(s) and covering fabric(s) meet the requirements for resistance to cigarette and match ignition in the 1995 & 1988 safety regulations

**CARELESSNESS
CAUSES FIRE**



RESISTANT

Assembly Instructions

Your Il Tutto CHAIR has been designed in Australia by Il Tutto International Pty Ltd with safety and comfort in mind.

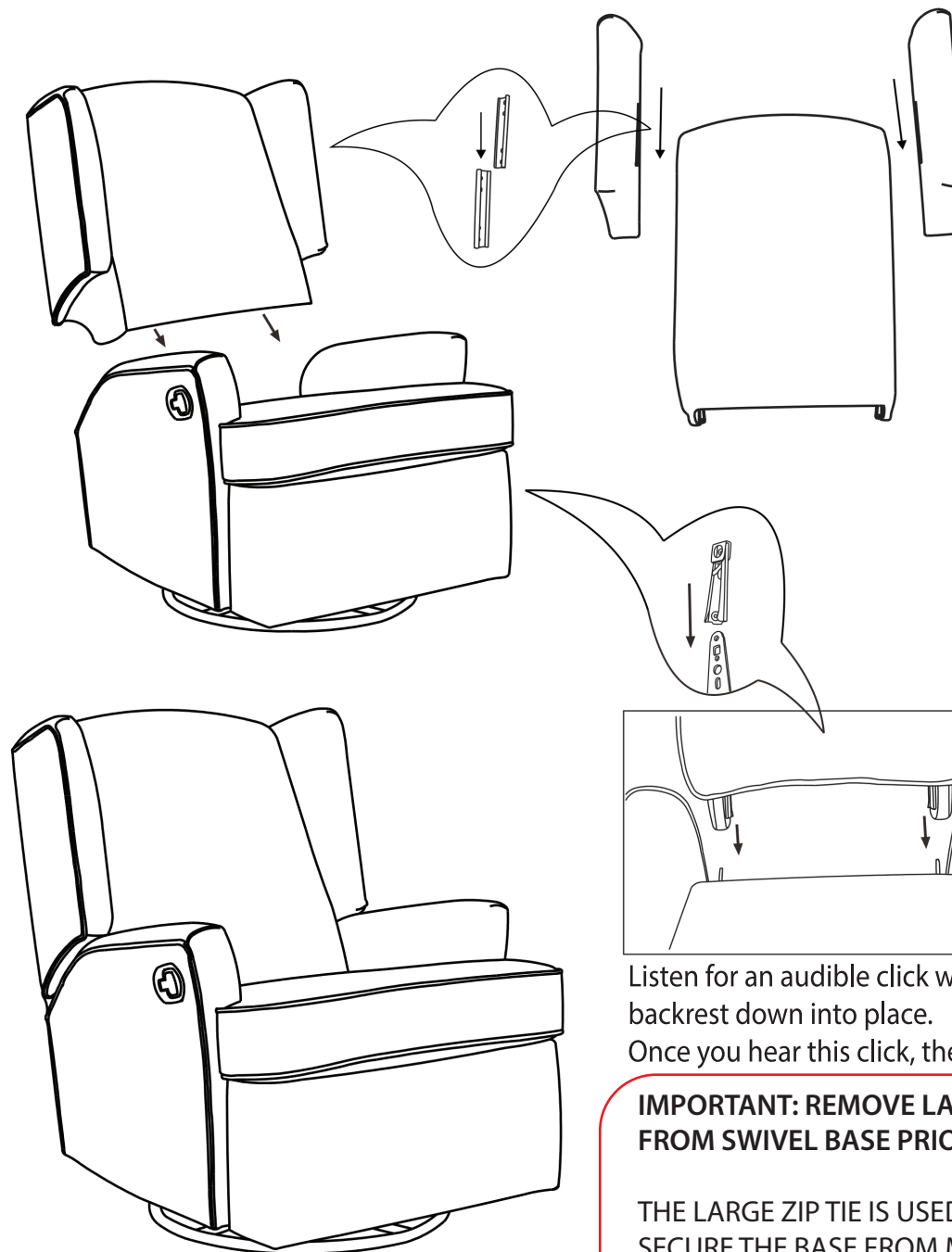
Please read all instructions carefully before and during assembly and use of this chair.

Do not allow children to play near or on the chair during assembly or use.

Dispose of all packaging material immediately after assembly.

We recommend 2 people assemble the chair.

Keep these instructions for future reference.



Completed assembled chair.

Listen for an audible click when pushing the backrest down into place.
Once you hear this click, the backrest is locked in place.

IMPORTANT: REMOVE LARGE ZIP TIE FROM SWIVEL BASE PRIOR TO USE.

THE LARGE ZIP TIE IS USED TO SECURE THE BASE FROM MOVEMENT DURING TRANSIT AND MUST BE REMOVED BEFORE USE.

OPERATING THE RECLINE POSITION

1. To recline the chair pull the lever on the side of the chair backwards. While leaning back to recline the backrest.

2. To retract the chair back into the upright position push down on the foot rest with your legs/feet.



CLEANING & MAINTENANCE

Wipe clean with a damp cloth. Use mild soap if required.

Do not use bleach.

Treat spills and stains as soon as possible.

Made in China.

Seat Lining 100% Polyester

Seat Filling Polyester/ Polyurethane Foam

Always check parts regularly and tighten or replace any screws, nuts or fasteners if required. Always contact us immediately if you have any concerns or require any spare parts for your Quinn recliner chair. Only use Il Tutto replacement parts.

If you require assistance with assembly please contact us via the information on this page.



Heroes Australia Pty Ltd

Trading as/ **Il Tutto**

12/123 Browns Plains Rd

Browns Plains, Qld 4118

*Please note; our office is not open to public.

Ph: 1300 780 548(AU only)

www.iltutto.co.uk

hello@iltutto.com



Visit our channel for videos!

<https://www.youtube.com/@iltutto/videos>

